

Accu-Lube[®]

**Minimum Quantity Lubricants
& Applicator Systems for
Near-Dry Machining**

the natural choice in metal working lubricants.



ITW
PRO
BRANDS

Accu-Lube®

HISTORY OF EXCELLENCE

Since 1979 Accu-Lube has been the industry leader in manufacturing lubricants and equipment for Minimum Quantity Lubrication (MQL). Today, Accu-Lube continues to be at the forefront of near-dry machining through our dedication to innovation, safety and service.

COMMITTED TO RESPONSIBLE MANUFACTURING

Accu-Lube manufactures a complete line of environmentally safe metalworking lubricants using renewable raw materials. These fluids are specially formulated to provide superior performance and economy while helping to keep the planet safe from industrial contaminants by getting rid of the toxins required in flood coolant and eliminating harmful waste. Our mission is to help customers create cleaner, safer, greener facilities with our non-toxic, biodegradable lubricants that are second to none in performance, quality and value.

QUALITY OVER QUANTITY

“A little lubricant is the big difference between dry machining and Near-Dry Machining”

With dry machining there is no lubricant to protect the part and tool, no barrier to reduce heat build-up, no means to prolong tool life. These problems are eliminated in near-dry machining with minimum quantity lubrication and precision application of lubricant droplets to the tool's cutting edge.

Accu-Lube Minimum Quantity Lubrication applicator systems use advanced technology to focus droplets of lubricant directly onto the tool's cutting edge, providing lubrication and protection precisely where it is needed. Our minimum quantity approach allows manufacturers to conserve fluid and cut down on waste. With a small amount of our premium lubricant, tools last longer and parts come out cleaner. By eliminating flood coolant, shops stay clean and fluid maintenance is a thing of the past.

This is Near-Dry Machining.



CONTENTS

General-Purpose Lubricants	4-5
Light-Viscosity Lubricants	6-7
Minimum Quantity Lubrication (MQL) Delivery Systems	8
Near-Dry Sawing Nozzles.....	9
Near-Dry Sawing Systems.....	9
Hand-Applied Lubricants	10
Product Technical Data	11



ITW Pro Brands, a division of Illinois Tool Works Inc. (ITW), is an industry leader in the development and production of scientifically advanced fluid products and equipment for the metalworking industry. These include eco-friendly lubricants & tapping fluids, cutting & grinding fluids, rust preventatives, stamping lubricants, aqueous cleaners, coolant maintenance equipment and minimum quantity lubrication systems. By continually focusing on advancements in production, safety and service we strive to uphold the Guiding Principles of ITW.



GENERAL-PURPOSE LUBRICANTS

Safe to use with all metals, cleaning recommended before heat treating.

LB-1000

Premium, heavy-duty minimum quantity lubricant with chlorinated extreme pressure additives.

CHARACTERISTICS

- Extra heavy-duty
- Vegetable-based, biodegradable lubricant
- 5% chlorinated EP additives, also available with 10 or 30% EP
- For ferrous & nonferrous metals, including aluminum
- Not recommended for titanium
- Clean before heat treating with soap and water

APPLICATIONS

- Heavy-duty machining, sawing and cutting
- Difficult steel & hardened metal operations
- Large diameter tapping
- Deep hole drilling
- High heat operations
- Sawing large diameter solids



PART NO.	SIZE
LB1000	1 gal. jug (4/case)
LB1055	55 gal. drum

LB-1100

Premium, heavy-duty minimum quantity lubricant with non-chlorinated extreme pressure additives.

CHARACTERISTICS

- Heavy-duty
- Vegetable-based, biodegradable lubricant
- For ferrous & nonferrous metals, aluminum and titanium
- Water-washable
- Clean before heat treating with rinse water

APPLICATIONS

- Heavy-duty machining, sawing and cutting
- Exotic and high nickel alloys
- Aerospace industry
- Large diameter tapping
- Deep hole drilling
- Carbide die stamping
- Sawing large diameter solids



PART NO.	SIZE
LB1100	1 gal. jug (4/case)
LB1155	55 gal. drum

FLAGSHIP

LB-2000

Superior, moderate to heavy-duty minimum quantity lubricant for general-purpose near-dry machining.

CHARACTERISTICS

- Moderate to heavy-duty
- Vegetable-based, biodegradable lubricant
- For ferrous & nonferrous metals, aluminum and titanium
- Accu-Lube's #1 product for over twenty years
- Clean before heat treating with soap and water

APPLICATIONS

- General machining, sawing and cutting
- Drilling & tapping small holes
- Sawing large diameter solids
- Large diameter tapping
- Broaching & spline rolling



PART NO.	SIZE
LB2000	1 gal. jug (4/case)
LB2055	55 gal. drum

FG-2000

Superior, food-grade minimum quantity lubricant with non-chlorinated anti-wear additives for moderate to heavy-duty near-dry machining.

CHARACTERISTICS

- Moderate to heavy-duty
- Vegetable-based, biodegradable lubricant
- NSF H1 approved for incidental food contact
- For ferrous & nonferrous metals, aluminum and titanium
- Clean before heat treating with soap and water

APPLICATIONS

- General machining, sawing and cutting
- Food-grade applications
- Medical device manufacturing
- Swiss style CNC machining centers
- Milling, drilling and tapping



PART NO.	SIZE
FG2001	1 gal. jug (4/case)
FG2055	55 gal. drum

GENERAL-PURPOSE LUBRICANTS

Accu-Lube's General-Purpose MQL Lubricants are safe to use with all metals, cleaning is recommended before heat treating.

Power Stamp III

Superior, heavy-duty minimum quantity lubricant with non-chlorinated anti-wear and extreme pressure additives.

CHARACTERISTICS

- Heavy-duty
- Vegetable-based, biodegradable lubricant
- For ferrous & nonferrous metals, aluminum and titanium
- Water-washable
- Clean before heat treating with rinse water

APPLICATIONS

- Heavy-duty machining, sawing and cutting
- Difficult steel & hardened metal operations
- Large diameter tapping
- Deep hole drilling
- High heat operations
- Sawing large diameter solids



PART NO.	SIZE
LBSTIII01	1 gal. jug (4/case)
LBSTIII55	55 gal. drum

LB-3000

Economical, moderate-duty minimum quantity lubricant.

CHARACTERISTICS

- Moderate-duty
- Vegetable-based, biodegradable lubricant
- For ferrous & nonferrous metals, aluminum and titanium
- Clean before heat treating with soap and water

APPLICATIONS

- General machining and sawing
- Replacement for "mist" type lubricant and coolant
- Lumber & wood cutting applications



PART NO.	SIZE
LB3000	1 gal. jug (4/case)
LB3055	55 gal. drum

Synthetic

Multi-purpose, water-based minimum quantity lubricant with non-chlorinated extreme pressure additives for moderate-duty near-dry machining.

CHARACTERISTICS

- Multi-purpose
- Water-based, synthetic lubricant
- Cools like flood coolant, lubricates like straight oil
- Rapid heat dissipation
- For ferrous metals
- Clean before heat treating with rinse water

APPLICATIONS

- General machining, sawing and cutting
- Replacement for straight oil



PART NO.	SIZE
LBSYNT01	1 gal. jug (4/case)
LBSYNT55	55 gal. drum

Synthetic II

Economical, water-based minimum quantity lubricant with non-chlorinated extreme pressure and boundary additives for moderate-duty near-dry stamping and machining.

CHARACTERISTICS

- Economical
- Water-based, synthetic lubricant
- Provides excellent corrosion protection
- Boron free with superior lubricity
- For ferrous & nonferrous metals and aluminum
- Clean before heat treating with rinse water

APPLICATIONS

- Stamping
- General machining, sawing and cutting



PART NO.	SIZE
LBSY201	1 gal. jug (4/case)
LBSY255	55 gal. drum

LIGHT-VISCOSITY LUBRICANTS

Safe to use with all metals, biodegradable, ideal for thru-tool applications.

LB-6000

Premium, moderate to heavy-duty minimum quantity lubricant.

CHARACTERISTICS

- Moderate to heavy-duty
- Vegetable-based, biodegradable lubricant
- Non-staining, burns off cleanly in post heat treating
- For ferrous & nonferrous metals, aluminum and titanium
- Clean with soap and water

APPLICATIONS

- Aluminum machining, cutting and sawing
- Moderate-duty milling, drilling, tapping and punching
- Replacing "mist" type lubricant and coolant
- Aluminum applications with post-heat treating
- Thru-tool applications



PART NO.	SIZE
LB6000	1 gal. jug (4/case)
LB6055	55 gal. drum

LB-6100

Premium, heavy-duty minimum quantity lubricant with non-chlorinated extreme pressure additives.

CHARACTERISTICS

- Heavy-duty
- Vegetable-based, biodegradable lubricant
- Non-staining, burns off cleanly in post heat treating
- For ferrous & nonferrous metals, aluminum and titanium
- Clean with soap and water

APPLICATIONS

- Moderate-duty milling, drilling, tapping, stamping and punching
- Heavy-duty machining, sawing and cutting
- Sawing large diameter solids
- Large diameter tapping
- Deep hole drilling
- Operations that generate a lot of heat
- Thru-tool applications



PART NO.	SIZE
LB6100	1 gal. jug (4/case)
LB6155	55 gal. drum

LB-5000

Superior, moderate-duty minimum quantity lubricant.

CHARACTERISTICS

- Moderate-duty
- Vegetable-based, biodegradable lubricant
- Non-staining, burns off cleanly in post heat treating
- For ferrous & nonferrous metals
- Clean with soap and water

APPLICATIONS

- General machining, sawing and cutting
- Post-heat treating aluminum



PART NO.	SIZE
LB5000	1 gal. jug (4/case)
LB5055	55 gal. drum

LB-6800

Moderate-duty minimum quantity lubricant.

CHARACTERISTICS

- Moderate-duty
- Vegetable-based, biodegradable lubricant
- Non-staining, burns off cleanly in post heat treating
- For ferrous & nonferrous metals, aluminum and titanium
- Clean with soap and water

APPLICATIONS

- General machining, sawing and cutting
- Sawing aluminum castings



PART NO.	SIZE
LB6800	1 gal. jug (4/case)
LB6855	55 gal. drum

LIGHT-VISCOSITY LUBRICANTS

Accu-Lube's Light Viscosity MQL Lubricants are safe to use with all metals and are ideal for thru-tool applications.

Power Stamp II

Superior, heavy-duty minimum quantity lubricant with non-chlorinated anti-wear and extreme pressure additives.

CHARACTERISTICS

- Heavy-duty
- Vegetable-based, biodegradable lubricant
- Non-staining, burns off cleanly in post heat treating
- For ferrous & nonferrous metals, aluminum and titanium
- Clean with rinse water

APPLICATIONS

- Stamping
- Operations that generate a lot of heat
- Machining aluminum and titanium
- Carbide die stamping



PART NO.
LBSTII01
LBSTII55

SIZE
1 gal. jug (4/case)
55 gal. drum

LB-4600

Economical, light-duty minimum quantity lubricant.

CHARACTERISTICS

- Light-duty
- Vegetable-based, biodegradable lubricant
- Non-staining, burns off cleanly in post heat treating
- For ferrous & nonferrous metals, aluminum and titanium
- Clean with soap and water

APPLICATIONS

- Light-duty machining, sawing and cutting
- Aluminum extrusion machining and sawing



PART NO.
LB4600
LB4655

SIZE
1 gal. jug (4/case)
55 gal. drum

LUBRICANT TECHNICAL DATA

Product	Type of Operations	EP Additives	Rinse Water Wash	Soap & Water Wash	Pin & Vee Block (lbs.)	Flash Point	Pour Point	Viscosity at 40°C (cSt)	1 gal. (4/cs)	55 gal.
FG-2000	Moderate - Heavy	Non-Cl		✓	2000	608°F (320°C)	-4°F (-20°C)	40	FG2001	FG2055
LB-1000	Extra Heavy	Cl		✓	> 4500	535°F (279°C)	5°F (-15°C)	39	LB1000	LB1055
LB-1100	Heavy	Non-Cl	✓		> 4500	593°F (312°C)	5°F (-15°C)	48	LB1100	LB1155
LB-2000	Moderate - Heavy			✓	1750	608°F (320°C)	-4°F (-20°C)	37	LB2000	LB2055
LB-3000	Moderate			✓	1500	608°F (320°C)	-4°F (-20°C)	37	LB3000	LB3055
LB-4600	Light			✓	900	335°F (168°C)	40°F (4°C)	7.3	LB4600	LB4655
LB-5000	Moderate			✓	1000	374°F (190°C)	40°F (4°C)	18	LB5000	LB5055
LB-6000	Moderate - Heavy			✓	1250	418°F (214°C)	-40°F (-40°C)	8.9	LB6000	LB6055
LB-6100	Heavy	Non-Cl		✓	> 4500	400°F (204°C)	-40°F (-40°C)	10.4	LB6100	LB6155
LB-6800	Moderate			✓	1250	400°F (204°C)	-40°F (-40°C)	9	LB6800	LB6855
Power Stamp II	Heavy	Non-Cl	✓		> 4500	400°F (204°C)	-38°F (-39°C)	15	LBSTII01	LBSTII55
Power Stamp III	Heavy	Non-Cl	✓		> 4500	598°F (314°C)	5°F (-15°C)	48	LBSTIII01	LBSTIII55
Synthetic	Moderate	Non-Cl	✓		> 4500	Not applicable	30°F (-1°C)	8	LBSYNT01	LBSYNT55
Synthetic II	Moderate	Non-Cl	✓		> 4500	Not applicable	35°F (2°C)	2	LBSY201	LBSY255

MINIMUM QUANTITY LUBRICATION (MQL)



Minimum Quantity Lubrication applicators systems focus droplets of lubricant directly onto the tool's cutting edge, providing lubrication & protection precisely where it is needed.

POSITIVE DISPLACEMENT PUMP TECHNOLOGY

Accu-Lube positive displacement pumps are designed to accurately deliver a constant and consistent amount of lubricant from the instant the applicator is turned on until the moment it is turned off. Unlike cheap siphon-type imitators, which are negatively affected by small variances in air pressure, room temperature, air hose length, and lubricant viscosity, Accu-Lube positive displacement pumps operate with accuracy and precision year-after-year to deliver lubricant to the cutting edge each time, every time.

An Accu-Lube positive displacement pump uses air pressure to power the pump cycle. The back stroke of the cycle draws a precise, measured amount of lubricant into a chamber like a syringe. Instantly the forward stroke forces the lubricant down a capillary tube inside an air hose up to 60' (18 m) long. Since the pump cycle is automatically regulated by a frequency generator it is not affected by lubricant viscosity, which changes with temperature. This is crucial for any application operating in an environment without climate control since lubricants thicken in the cold. Accu-Lube positive displacement pumps deliver instant performance, with every type of Accu-Lube lubricant, in all conditions.



BOX APPLICATORS

The gold standard in Near-Dry Machining, featuring Accu-Lube's patented precision pumps and a lockable steel security box.

SPECIAL FEATURES

- Exclusive positive displacement pump technology deliver precise metered amount of lubricant
- Air filter/regulator gives added control and precision
- Lockable security box with front and back door access
- Individually controlled airflow valve, lubricant control, and frequency generator
- No misting! Coaxial hose assembly atomizes the lubricant at the nozzle tip prevents misting

Automatic On/Off, Fixed

- 110 VAC electronic solenoid on/off control
- Fixed applicator mounting
- 12" copper nozzle(s), fixed mounting
- 12' hose assembly
- Reservoir included

PART NO.	SIZE
01A1-STD	1 pump
02A1-STD	2 pumps
03A1-STD	3 pumps
04A1-STD	3 pumps

Manual On/Off, Fixed

- Manual on/off control
- Fixed applicator mounting
- 12" copper nozzle(s), fixed mounting
- 12' hose assembly
- Reservoir included

PART NO.	SIZE
01A0-STD	1 pump
02A0-STD	2 pumps
03A0-STD	3 pumps
04A0-STD	3 pumps

Manual On/Off, Portable

- Manual on/off control
- Magnetic applicator mounting
- 18" Loc-Line nozzle(s), magnetic mounting
- 12' hose assembly
- 10 oz. reservoir

PART NO.	SIZE
01A0-DMO	1 pump
02A0-DMO	2 pumps

JUNIOR APPLICATORS

The perfect solution for small production operations with the same precision pump and frequency generator as the Box Applicator.

SPECIAL FEATURES

- Compact applicator with magnetic mounts for easy placement
- Precision pumps deliver precisely metered lubrication
- No misting! Coaxial hose assembly atomizes the lubricant at the nozzle tip prevents misting



Portable Nozzles

- Manual on/off control
- Magnetic applicator mounting
- 18" Loc-Line nozzle(s), magnetic mounting
- 12' hose assembly
- 10 oz. reservoir

PART NO.	SIZE
01D0-STD	1 pump
02D0-STD	2 pumps

Fixed Nozzles

- Manual on/off control
- Fixed applicator mounting
- 12" copper nozzle(s), fixed mounting
- 12' hose assembly
- 10 oz. reservoir

PART NO.	SIZE
01D0-COP	1 pump
02D0-COP	2 pumps

NOZZLE TECHNOLOGY SAWING

Increase blade life, reduce fluid consumption, maximize sawing productivity. Every sawing nozzle has three angled outlets to lubricate the blade's teeth and sides. One or more internal atomizing chambers break up the lubricant for an even, consistent spray and continuous lubrication.

Band Saw Nozzle

CHARACTERISTICS

- Better chip removal
- Improves blade life
- Cut tubes of all sizes and solids up to 10" wide

NOZZLE TYPE	SIZE	PART NO.
V-Nozzle	0.75-1.5" wide	9692
N-Nozzle	0.75-1.5" wide	9696
RL-Nozzle	up to 2" wide (needs 2 feeds)	9877

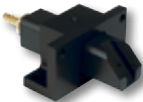


Circular Saw Nozzle

CHARACTERISTICS

- Unique design allows one nozzle to work like three
- Lubricates the cutting face and into the gullet
- Cleaner blades that last longer

NOZZLE TYPE	SIZE	PART NO.
C-Nozzle	up to 20" (angled head)	9878
CM-Nozzle	22-36" (needs 2-3 feeds)	379165
CL-Nozzle	36 - 120" wide (needs 2 feeds)	9045



Nozzles

Copper



SIZE	PART NO.
12" with standard tip	79101

Stainless Steel



SIZE	PART NO.
12" with standard tip	79115

Loc-Line



SIZE	PART NO.
18" with standard tip	79108

NEAR-DRY SAWING SYSTEMS

Band Applicator Sawing Systems

For more automation and control.

CHARACTERISTICS

- Better chip removal
- Improves blade life
- Cut tubes of all sizes and solids up to 10" wide

NOZZLE TYPE	PART NO.
V-Nozzle	01A1-SAW
N-Nozzle	01A1-NNZ
RL-Nozzle	02A1-RLZ
C-Nozzle	01A1-CIR

Junior Applicator Sawing Systems

For easy sawing applications.

CHARACTERISTICS

- Manual on/off control
- Fixed applicator mounting
- 12' hose assembly
- 10 oz. reservoir

NOZZLE TYPE	PART NO.
V-Nozzle	01D0-SAW
N-Nozzle	01D0-NNZ
RL-Nozzle	02D0-RLZ
C-Nozzle	01D0-CIR

General-Purpose Nozzle



SIZE	PART NO.
90° option for saw nozzles	79101

In-Line Atomizer



PART NO.
9693

HAND-APPLIED LUBRICANTS



Made with natural ingredients, environmentally-safe.

LB-2000 Pump Spray

LB-2000 vegetable-based, biodegradable lubricant in a convenient pump spray bottle for mess-free lubrication without an applicator.

CHARACTERISTICS

- Vegetable-based, biodegradable lubricant
- For ferrous & nonferrous metals, aluminum and titanium
- Clean before heat treating with rinse water

FEATURES

- Moderate to heavy-duty operations
- Short-run and hand-held machining
- Drilling, tapping and milling
- When compressed air is not available

PART NO.	SIZE
79026	8 oz. spray (16/case)



#10 Perfect Tap

Natural-based cutting oil tough enough to handle repeated cuts without reapplication with a thick consistency that allows the tap to cut several holes before re-coating.

CHARACTERISTICS

- Vegetable-based lubricant
- For ferrous & nonferrous metals, aluminum and titanium
- Clean before heat treating with rinse water

FEATURES

- Drilling, tapping and reaming

PART NO.	SIZE
7583	8 oz. bottle (16/case)
7584	1 gal. jug



Gel Paste

Natural-based gel lubricant works on a wide variety of cutting applications. The workable texture makes it easy to apply to small and large tools with a soft brush without risk of damaging the tool.

CHARACTERISTICS

- Vegetable-based lubricant
- For ferrous & nonferrous metals, aluminum and titanium

FEATURES

- Horizontal applications
- Short-run machining
- Tapping, reaming and drilling

PART NO.	SIZE
7603	8 oz. jar (16/case)



LS-10

Solid paste lubricant reduces friction for cleaner cutting and better finish. Apply LS-10 directly to the tool or work area with a stiff brush.

CHARACTERISTICS

- Vegetable-based lubricant
- For ferrous & nonferrous metals, aluminum and titanium

FEATURES

- Horizontal applications
- Short-run machining
- Tapping, reaming and drilling

PART NO.	SIZE
79030	8 oz. jar (16/case)



Stick Lubricant

LB-2000 vegetable-based, biodegradable lubricant in a convenient pump spray bottle for mess-free lubrication without an applicator.

CHARACTERISTICS

- Vegetable-based lubricant
- For ferrous & nonferrous metals, aluminum and titanium
- Clean with soap and water

FEATURES

- Short-run machining
- Rotating or stationary cutting tools
- Belt, disc and wheel grinding

PART NO.	SIZE
79042	2.2 oz. push-up stick (24/case)
79045	13 oz. tube (24/case)



Block Lubricant

Hand-held solid lubricant reduces heat build-up in belt, disc and wheel grinding applications. Designed to be applied directly to the tool or work area for immediate lubrication.

CHARACTERISTICS

- Vegetable-based lubricant
- For ferrous & nonferrous metals, aluminum and titanium
- Clean with soap and water

FEATURES

- Short-run machining
- Belt, disc and wheel grinding

PART NO.	SIZE
79037	2.6 oz. block (120/case)



PRODUCT TECHNICAL DATA

Solenoid



Automate the on/off control of your applicator with an electric solenoid available in different voltages.

PART NO. 9711

Frequency Generator



PART NO. 9460

10 oz. Polycarbonate Reservoir



PART NO.
9380

SIZE
1/4" NPT for connection to
Boxed applicator

309182

1/2-27 straight thread with
O-ring for direct pump
connection on JR applicator.

1 Quart Polycarbonate Reservoir



PART NO.
9381

SIZE
1/4" NPT for connection
to Boxed applicator

APPLICATOR TECHNICAL DATA

Part No.	MQL Applicator	# of Pumps	Nozzle	Manual On/Off	Solenoid On/Off	Steel Security Box	Nozzle Mounting	Applicator Mounting	Reservoir Size
01A0-STD	Box	1 Pump	12" Copper	✓		✓	Fixed	Fixed	10 oz.
02A0-STD	Box	2 Pump	12" Copper	✓		✓	Fixed	Fixed	10 oz.
03A0-STD	Box	3 Pump	12" Copper	✓		✓	Fixed	Fixed	10 oz.
04A0-STD	Box	4 Pump	12" Copper	✓		✓	Fixed	Fixed	1 qt.
01A1-STD	Box	1 Pump	12" Copper		✓	✓	Fixed	Fixed	10 oz.
02A1-STD	Box	2 Pump	12" Copper		✓	✓	Fixed	Fixed	10 oz.
03A1-STD	Box	3 Pump	12" Copper		✓	✓	Fixed	Fixed	10 oz.
04A1-STD	Box	4 Pump	12" Copper		✓	✓	Fixed	Fixed	1 qt.
01A0-DMO	Box	1 Pump	18" Loc-Line	✓		✓	Magnetic	Magnetic	10 oz.
02A0-DMO	Box	2 Pump	18" Loc-Line	✓		✓	Magnetic	Magnetic	10 oz.
01D0-COP	Junior	1 Pump	12" Copper	✓			Fixed	Fixed	10 oz.
02D0-COP	Junior	2 Pump	12" Copper	✓			Fixed	Fixed	10 oz.
01D0-STD	Junior	1 Pump	18" Loc-Line	✓			Magnetic	Magnetic	10 oz.
02D0-STD	Junior	2 Pump	18" Loc-Line	✓			Magnetic	Magnetic	10 oz.
01A1-SAW	Box	1 Pump	V-Nozzle		✓	✓	Band	Fixed	10 oz.
01A1-NNZ	Box	1 Pump	N-Nozzle		✓	✓	Band	Fixed	10 oz.
02A1-RLZ	Box	2 Pumps	RL-Nozzle		✓	✓	Band	Fixed	10 oz.
01A1-CIR	Box	1 Pump	C-Nozzle		✓	✓	Circular	Fixed	10 oz.
01D0-SAW	Junior	1 Pump	V-Nozzle	✓			Band	Fixed	10 oz.
01D0-NNZ	Junior	1 Pump	N-Nozzle	✓			Band	Fixed	10 oz.
02D0-RLZ	Junior	2 Pumps	RL-Nozzle	✓			Band	Fixed	10 oz.
01D0-CIR	Junior	1 Pump	C-Nozzle	✓			Circular	Fixed	10 oz.

Accu-Lube®



ITW PRO BRANDS
4647 HUGH HOWELL ROAD
TUCKER, GA 30084
1-800-241-8334 • 1-770-243-8800
WWW.ACCULUBERUSTLICK.COM



L1950 150410