

# 3M™ Adflo™ Powered Air Purifying Respirator

To optimize the lifetime of your welding equipment and avoid the additional cost of replacement, regular maintenance is important. Replace all damaged parts immediately to help ensure intended degree of protection.

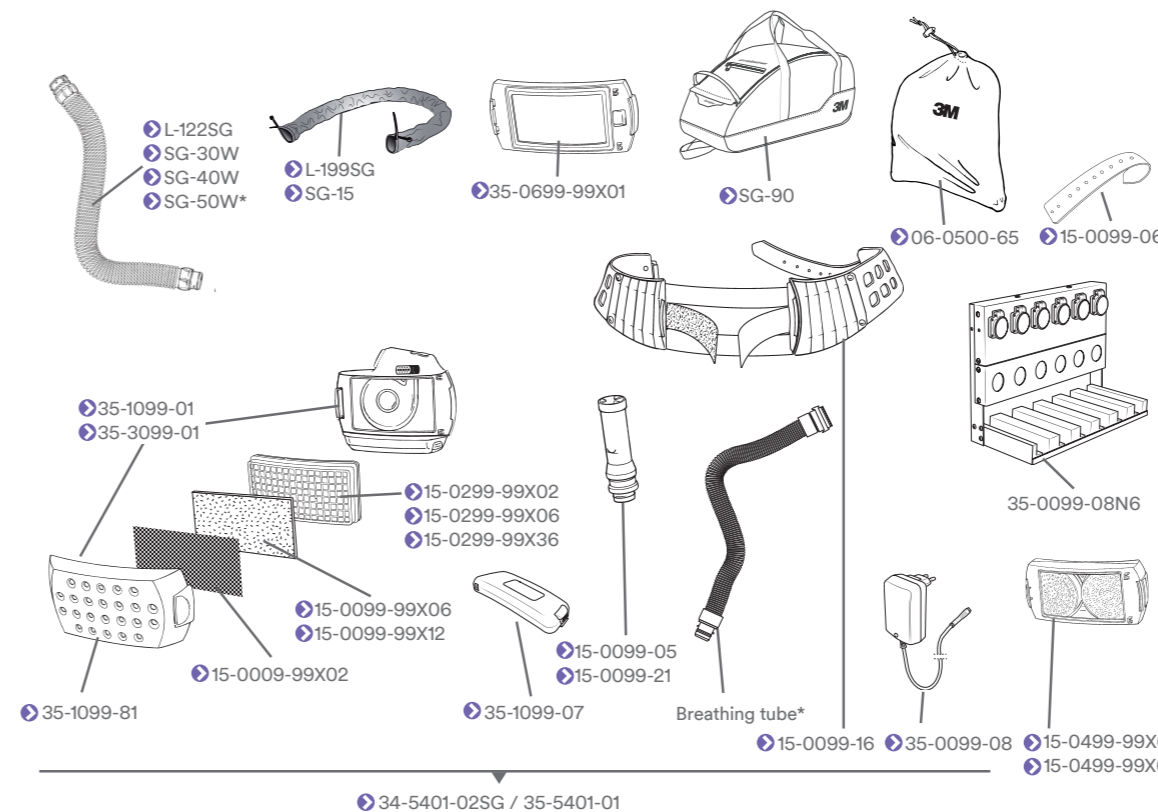
## Before use

- **Battery.** Ensure that it's adequately charged and ensure it is seated correctly.
- **Blower unit.** Inspect the unit for damage, replace any spare parts or contact your supplier for advice. Ensure that the unit is firmly fixed to the belt and that filters are correctly installed and fit properly.
- **Breathing tube.** Inspect the tube and connections to ensure they are free from splits and holes. Replace if damaged, deformed or leaking any air. To extend the life of the breathing tube, use a tube cover or the heavy-duty breathing tube.
- **Air flow check.** Fit the breathing tube to the blower unit, and attach the airflow meter in the other end of the tube, and switch on the blower unit. If the ball does not rise above the line, continue fault finding.
- **Alarm check.** Cover the air outlet of the airflow meter with your hand until an audible warning is heard and the red indicator illuminates. Remove your hand. The alarm should now stop.

## After use

- **Clean the equipment.** Wipe the blower unit with a moist tissue or cloth. If you suspect that the inside of the breathing tube is dirty, it must be changed. DO NOT rinse, immerse in water, or clean with solvents. DO NOT attempt to remove contamination on filters using for example, compressed air, as this will damage the filters and the warranty will become invalid.
- **Replace damaged parts.** Replace all damaged parts to maintain the function of the respirator. Worn-out components should be disposed of according to local regulations.
- **Spark arrestor.** Replace if deformed and no longer fitting well.
- **Prefilter.** Replace if it's too dirty, to help extend the life of the particle filter, saving money while also helping the battery run-time.
- **Particle filter.** Check the battery indicator's position and replace if the red LED is lit. Otherwise, replace whenever the battery operating time becomes too short, or when "fully loaded" filter triggers low airflow alarm.
- **OV/AG cartridge.** Replace the OV/AG cartridge according to your workplace requirements. Do not wait until you can sense odors.
- **Nuisance odor pad\*.** Replace anytime you smell unpleasant odors. Nuisance odor pad must be used with the HE particle filter and must not be used alone or in combination with the OV/AG cartridge.
- **Storage.** Charge the battery after each use. When stored, recharge every six months. Store the unit in a dry, clean area away from direct sunlight, high temperatures and solvents. For example, store in a 3M™ Speedglas™ protective bag.

\*Nuisance odor refers to concentrations of organic vapors not exceeding the OSHA permissible exposure limit (PEL) or applicable occupational exposure limits, whichever is lower.



Part No	Description
L-122SG	Breathing tube for L-series headgear.
L-199SG	High temperature breathing tube cover.
SG-15	Flame resistant breathing tube cover.
SG-30W	Breathing tube, self-adjusting, with QRS connection.
SG-40W	Breathing tube, heavy-duty, with QRS connection.
SG-50W*	Breathing tube, sound-dampening, with QRS connection.
SG-90	Carry bag, black.
06-0500-65	Protective bag.
15-0009-99X02	Spark arrestor, 2/case.
15-0099-05	Airflow indicator.
15-0099-06	Leather belt front replacement.
15-0099-16	Belt, leather.
15-0099-21	Flow Indicator.
15-0099-99X06	Prefilter, 6/case.
15-0099-99X12	Prefilter, 12/case.
15-0299-99X02	HE particulate filter, 2/case.
15-0299-99X06	HE particulate filter, 6/case.
15-0299-99X36	HE particulate filter, 36/case.
15-0499-99X02	OV/AG cartridge, 2/case.
15-0499-99X06	OV/AG cartridge, 6/case.
34-5401-02SG	Blower unit with L-122SG breathing tube, airflow indicator, prefilter, spark arrestor, filter cover, HE particulate filter, li ion battery, belt and charger. (Headgear not included.)
35-0099-08	Battery charger.
35-0099-08N6	Battery charging stand, 6-position.
35-0099-14	Belt with quick connection (not shown).
35-0699-99X01	Nuisance odor pad assembly.
35-0799-99X01	Nuisance odor pad (not shown).
35-0799-99X10	Nuisance odor pad, 10 EA/Case (not shown).
35-1099-07	Battery, Lithium Ion.
35-1099-01	Blower unit with cover.
35-1099-81	PAPR filter cover.
35-3099-01	Blower unit with cover, with high altitude compensation.
35-5401-01*	Blower unit with SG-30W self-adjusting breathing tube, airflow indicator, prefilter, spark arrestor, HE particulate filter, li ion battery, belt and charger. (Headgear not included.)

\* When using the Adflo PAPR with HE filter + OV/AG cartridge together with welding helmet 9100-Air or 9100 MP, the SG-50W breathing tube must be used for compliance.

**Further information and advice**  
To request a quote or place an order for spare parts, please contact your 3M approved distributor. Please note that higher than normal levels of pollutants, heat and sparks will require more frequent replacement of components. If you require additional guidance, please check the care and maintenance videos on our YouTube Channel (3M Speedglas) or contact your local 3M representative.

[youtube.com/3MSpeedglas](https://www.youtube.com/3MSpeedglas)
[facebook.com/3MSpeedglas](https://www.facebook.com/3MSpeedglas)  
[instagram.com/3MSpeedglas](https://www.instagram.com/3MSpeedglas)
[www.3M.com/Speedglas](http://www.3M.com/Speedglas)

3M, Speedglas, and Versaflo are trademarks of 3M Company, used under license in Canada. Peltor is a trademark of 3M Svenska AB, used under license in Canada. For more information: Technical Assistance in US 1-800-243-4630. Technical Assistance in Canada 1-800-267-4414. © 3M 2015. All rights reserved.