

Kappen

Caplugs bietet ein umfangreiches Sortiment an Kunststoffkappen für den optimalen Schutz beim Transport und der Lagerung. Die Kappen können ebenfalls perfekt als Abschlusskappe für einen endgültigen Verbleib am Endprodukt verwendet werden.

caps

A full range of plastic caps is offered by Caplugs to protect fabricated components during shipping and storage. The caps can also be used as finishing parts that remain on the end product. You can choose from thousands of plastic caps that are in stock and ready to ship by selecting a desired style, size, material, color and quantity.

Kostenlose Muster sind von jedem Teil im Katalog verfügbar, dies erlaubt Ihnen garantiert, das richtige Schutzelement für Ihre Anwendung zu finden.

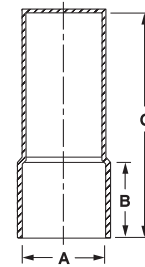
FI Series Diesel Fuel Injector Cap



FI Series diesel fuel injector caps protect from impact damage and keep out moisture and contaminants during shipping or storage.

- Economical protection
- One size fits all standard injectors

Material: Low-Density Polyethylene **Color:** Blue



Diesel Fuel Injector Cap FI Series

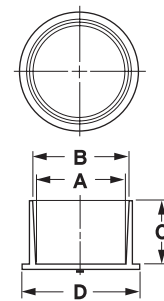
Caplugs No.	Dimensions						Packaging	
	A		B		C		Carton Quantity	Mini Pak Quantity
	In	mm	In	mm	In	mm		
FI-945	1.310	33.27	1.38	35.05	3.45	87.63	1200	240

EZC Series Non-Threaded NPT Caps



EZC Series non-threaded NPT caps are a heavy-duty, tapered, multi-use cap designed to protect a variety of items. The flange allows for easy insertion and removal.

Material: Low-Density Polyethylene **Color:** Orange



Non-Threaded NPT Caps EZC Series

Caplugs No.	To Cap NPT Size	Dimensions								Packaging	
		A		B		C		D		Carton Quantity	Mini Pak Quantity
		In	mm	In	mm	In	mm	In	mm		
EZC-2	1/8	.363	9.22	.385	9.78	.37	9.30	.59	15.09	7500	1500
EZC-4	1/4	.493	12.52	.523	13.28	.42	10.64	.73	18.64	4000	800
EZC-6	3/8	.585	14.86	.662	16.81	.62	15.88	.89	22.63	5000	1000
EZC-8	1/2	.725	18.42	.856	21.74	.59	14.86	1.06	27.00	2500	500
EZC-12	3/4	.990	25.15	1.040	26.42	.69	17.53	1.25	31.75	1500	300
EZC-16	1	1.257	31.93	1.305	33.15	.69	17.48	1.52	38.51	1000	200
EZC-24	1-1/2	1.842	46.79	1.898	48.21	.75	19.13	2.11	53.57	500	100
EZC-26	-	1.962	49.83	1.972	50.09	1.29	32.64	2.25	57.15	250	50

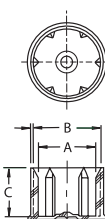
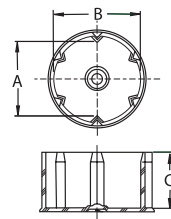
FCO Series Flat-Faced O-Ring Caps



FCO Series flat-faced O-ring caps are designed to protect the outside of hexnuts and feature a chamfered flange for easy hand removal. A snug fit prevents falling during transit. The caps are ideal for fluid power valves, hose and pipe fittings.

- Available in two styles
- Internal ribs securely hold caps in place

Material: Low-Density Polyethylene **Color:** Red



FCO-120 thru FCO-200

FCO-40 thru FCO-100

Flat-Faced O-Ring Caps FCO Series

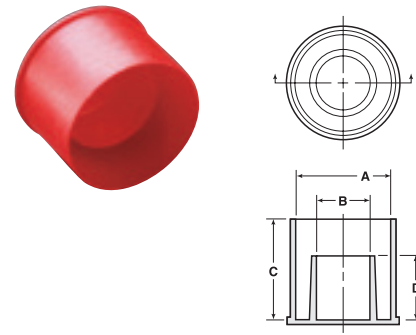
Caplugs No.	To Cap Thread Size	To Fit Hex Size	Dimensions						Packaging	
			A		B		C		Carton Quantity	Mini Pak Quantity
			In	mm	In	mm	In	mm		
FCO-40	9/16 - 18	11/16	.671	17.04	.786	19.96	.590	14.99	6000	1000
FCO-60	11/16 - 16	13/16	.792	20.12	.928	23.57	.680	17.27	4000	800
FCO-80	13/16 - 16	15/16	.916	23.27	1.074	27.28	.840	21.34	2500	500
FCO-100	1 - 14	1-1/8	1.098	27.89	1.287	32.69	.940	23.88	1500	300
FCO-120	1-3/16 - 12	1-3/8	1.355	34.42	1.576	40.03	1.030	26.16	1000	200
FCO-160	1-7/16 - 12	1-5/8	1.586	40.28	1.859	47.22	1.110	28.19	900	180
FCO-200	1-11/16 - 12	1-7/8	1.832	46.53	2.148	54.56	1.110	28.19	700	140

FTC Series

Caps For Flareless Tube and Nut Assemblies

FTC Series caps for flareless tube and nut assemblies feature a "cap within a cap" design. The design allows the outer cap to conform to the hex shape of the nut while the inner cap covers the tube and sleeve inside the nut and holds the assembly firmly in place.

Material: Low-Density Polyethylene **Color:** Red



Caps For Flareless Tube and Nut Assemblies FTC Series

Caplugs No.	To Fit Tube Size	Dimensions								Packaging	
		A		B		C		D		Carton Quantity	Mini Pak Quantity
		In	mm	In	mm	In	mm	In	mm		
FTC-2	1/8	.39	9.91	.17	4.32	.58	14.73	.40	10.16	5000	1000
FTC-3	3/16	.46	11.68	.24	6.10	.63	16.00	.41	10.41	5000	1000
FTC-4	1/4	.59	14.99	.30	7.62	.77	19.56	.52	13.21	5000	1000
FTC-5	5/16	.65	16.51	.37	9.40	.81	20.57	.53	13.46	5000	1000
FTC-6	3/8	.72	18.29	.41	10.41	.81	20.57	.54	13.72	5000	1000
FTC-8	1/2	.91	23.11	.57	14.48	.86	21.84	.54	13.72	2500	500
FTC-10	5/8	1.04	26.42	.67	17.02	.99	25.15	.64	16.26	2500	500
FTC-12	3/4	1.30	33.02	.83	21.08	1.00	25.40	.64	16.26	1000	200
FTC-16	1	1.56	39.63	1.07	27.18	1.10	27.94	.63	16.00	1000	200
FTC-18	1 1/8	1.99	50.55	1.09	27.69	.90	22.86	.63	16.00	1000	200
FTC-20	1 1/4	2.08	52.83	1.32	33.53	1.10	27.94	.62	15.75	1000	200
FTC-24	1 1/2	2.36	59.95	1.56	39.63	1.08	27.43	.62	15.75	500	100
FTC-28	1 3/4	2.76	70.11	1.83	46.48	1.14	28.96	.69	17.53	500	100
FTC-32	2	3.00	76.20	2.06	52.33	1.17	29.72	.63	16.00	250	50

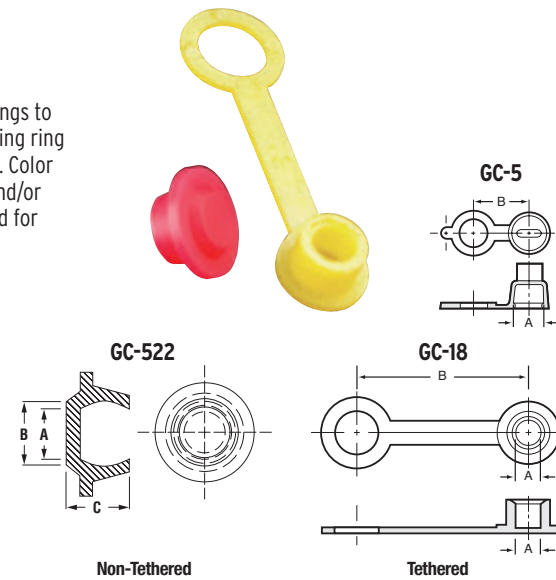
GC Series

Grease Caps

GC Series grease caps snap securely over fittings to seal out dirt and moisture. The integral retaining ring keeps the cap firmly in place during servicing. Color coding is also available to indicate the type and/or frequency of lubrication. The caps can be used for masks when spray painting.

• Available in tethered and non-tethered

Material: Low-Density Polyethylene
Colors: Red, Blue, Yellow, Green, Black, White



Grease Caps GC Series

Caplugs No.	Dimensions						Packaging	
	A		B		C		Carton Quantity	Mini Pak Quantity
	In	mm	In	mm	In	mm		
GC-5	.234	5.94	.47	11.94	-	-	2500	500
GC-18	.227	5.77	1.52	38.61	-	-	2500	500
GC-522	.250	6.35	.25	6.35	.24	6.10	2500	500

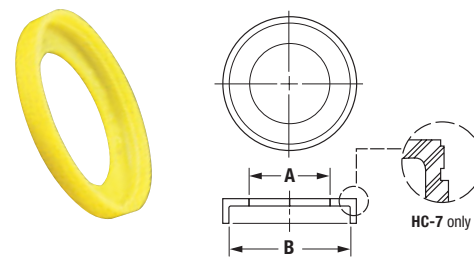
HC Series

Hose Caps

HC Series hose caps are used to cover rigid tube and hose ends, as well as to prevent slippage over the fitting. The primary application for these caps is hose assembly manufacturing.

- Durable
- Flexible

Material: Flex Temp (Thermoplastic rubber) **Color:** Yellow



† HC-7 is LDPE material.

Hose Caps HC Series

Caplugs No.	Dimensions				Packaging	
	A		B		Carton Quantity	Mini Pak Quantity
	In	mm	In	mm		
HC-4	.320	8.13	.589	14.96	10000	1000
HC-6	.445	11.30	.766	19.46	10000	1000
HC-7 †	.660	16.76	.820	20.83	5000	1000
HC-8	.570	14.49	.880	22.35	5000	1000
HC-10	.700	17.78	1.056	26.82	5000	1000
HC-12	.823	20.90	1.183	30.05	5000	1000
HC-16	1.088	27.64	1.404	35.66	5000	1000

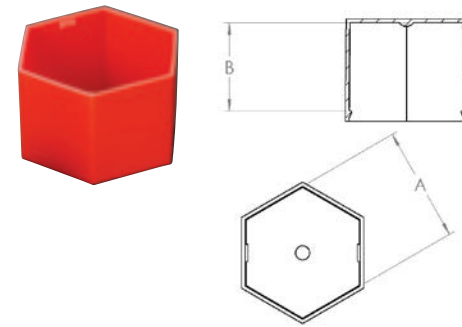
HEX Series

Hexagonal Caps

HEX Series hexagonal caps are designed to protect hex style bolts or nuts from damage and contaminants. A dual bead feature allows parts to securely lock in place.

- Easy to install
- Common sizes available

Material: Low-Density Polyethylene **Color:** Color coded by size



Hexagonal Caps HEX Series

Caplugs No.	Fits Hex Size/Color	Dimensions				Packaging	
		A		B		Carton Quantity	Mini Pak Quantity
		In	mm	In	mm		
HEX-250	1/4 - Purple	.575	14.61	.75	19.05	5000	1000
HEX-500	1/2 - Brown	.894	22.71	.84	21.34	3000	600
HEX-625	5/8 - Blue	1.010	25.65	.90	22.86	2500	500
HEX-750	3/4 - White	1.255	31.88	.97	24.64	2500	500
HEX-1000	1 - Red	1.515	38.48	.95	24.13	2500	500

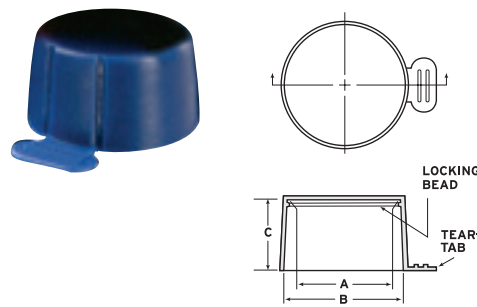
J Series

Tear-Tab Caps for NPT Pipe Threads

J Series tear-tab caps for NPT pipe threads feature a time-saving tear-tab cap that slips easily over male NPT threaded fittings and snaps securely in place. A ribbed wide tear-tab allows for easy removal.

- Covers NPT thread
- Easy installation and removal
- Locks onto threads

Material: Low-Density Polyethylene **Color:** Blue



Tear-Tab Caps for NPT Pipe Threads J Series

Caplugs No.	To Fit Thread Size	Dimensions						Packaging	
		A		B		C		Carton Quantity	Mini Pak Quantity
		In	mm	In	mm	In	mm		
J-1/16	1/16 NPT	.300	16.20	.300	76.20	.32	8.13	20000	4000
J-1/8	1/8 NPT	.385	9.78	.405	10.29	.32	8.13	5000	1000
J-1/4	1/4 NPT	.512	13.00	.540	13.72	.49	12.45	5000	1000
J-3/8	3/8 NPT	.643	16.33	.675	17.15	.49	12.45	5000	1000
J-TT-4	1/2 NPT	.835	21.20	.835	21.20	.64	16.26	3500	700
J-3/4	3/4 NPT	1.005	25.53	1.050	26.67	.65	16.51	2500	500
J-1	1 NPT	1.261	32.03	1.315	33.40	.81	20.57	2500	500
J-1-1/4	1-1/4 NPT	1.604	40.74	1.660	42.16	.84	21.34	2000	400
J-1-1/2	1-1/2 NPT	1.841	46.76	1.900	48.26	.85	21.59	1000	200
J-2	2 NPT	2.313	58.75	2.375	60.33	.89	22.61	500	100
J-2-1/2	2-1/2 NPT	2.792	70.92	2.875	73.03	1.33	33.78	500	100
J-3	3 NPT	3.411	86.64	3.500	88.90	1.39	35.31	250	50
J-4	4 NPT	4.412	112.06	4.550	115.57	2.00	50.80	200	40

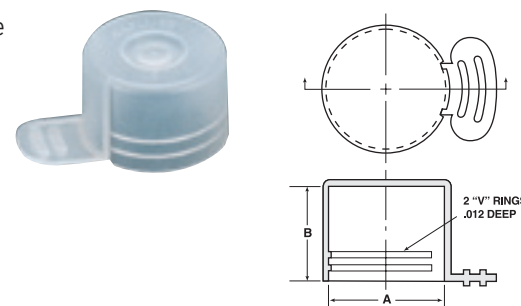
JS Series

Tear-Tab Caps for Straight Threads

JS Series tear-tab caps for straight threads feature an extra-wide ribbed tab for easy removal.

- Natural color
- Vast range of sizes

Material: Low-Density Polyethylene
Color: Natural (Black in carton qty. only)



Tear-Tab Caps for Straight Threads JS Series

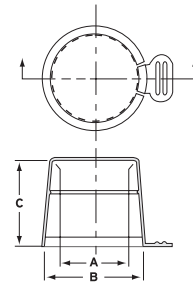
Caplugs No.	To Fit Tube Size	To Fit Thread Size	Dimensions				Packaging	
			A		B		Carton Quantity	Mini Pak Quantity
			In	mm	In	mm		
JS-6	3/16	3/8 - 24	.371	9.42	.44	11.18	5000	1000
JS-7	1/4	7/16 - 20	.428	10.87	.44	11.18	5000	1000
JS-8	5/16	1/2 - 20	.495	12.57	.46	11.68	5000	1000
JS-9	3/8	9/16 - 18	.559	14.20	.48	12.19	5000	1000
JS-10	3/8	5/8 - 18	.615	15.62	.48	12.19	5000	1000
JS-11	3/8	11/16 - 16	.680	17.27	.48	12.19	5000	1000
JS-12	1/2	3/4 - 16	.740	18.80	.56	14.22	5000	1000
JS-13	1/2	13/16 - 16	.803	20.40	.64	16.26	5000	1000
JS-TU-9	-	13/16	.803	20.40	.56	14.22	2500	500
JS-14	5/8	7/8 - 14	.865	21.97	.70	17.78	5000	1000
JS-TU-10	-	7/8	.865	21.97	.65	16.51	2500	500
JS-16	5/8	1 - 14	.993	25.22	.65	16.51	5000	1000
JS-17	3/4	1-1/16 - 12	1.053	26.75	.83	21.08	2500	500
JS-TU-12	-	1-1/16	1.053	26.75	.75	19.05	2500	500
JS-19	7/8	1-3/16 - 12	1.180	29.97	.75	19.05	2500	500
JS-TU-16	-	1-5/16	1.303	33.10	.75	19.05	1500	300
JS-23	1	1-7/16 - 12	1.430	36.32	.75	19.05	2000	400
JS-TU-20	-	1-5/8	1.616	41.05	.82	20.83	750	150
JS-TU-21	-	1-11/16	1.678	42.62	.82	20.83	500	100
JS-TU-24	-	1-7/8	1.866	47.40	.95	24.13	500	100
JS-TU-32	-	2-1/2	2.491	63.27	1.10	27.94	350	70

MJ Series

Tear-Tab Caps for Tapered Metric Threads

MJ Series tear-tab caps for tapered metric threads feature a locking bead that engages lead thread and holds cap on securely. A tear-tab breaks the seal for easy removal.

Material: Low-Density Polyethylene **Color:** Red



Tear-Tab Caps for Tapered Metric Threads MJ Series

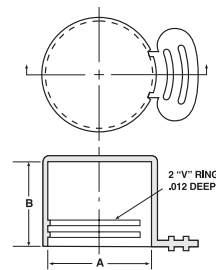
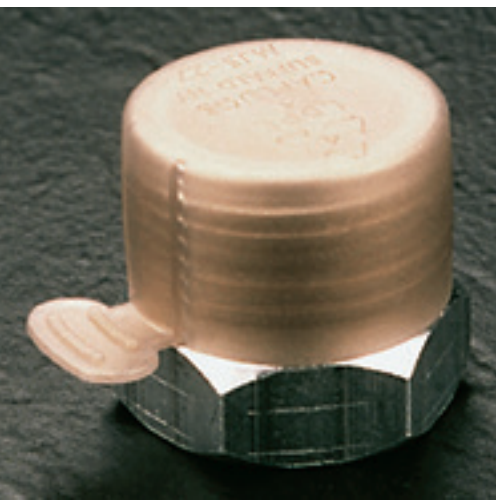
Caplugs No.	Dimensions						Packaging	
	A		B		C		Carton Quantity	Mini Pak Quantity
	In	mm	In	mm	In	mm		
MJ-3/4	1.106	28.09	1.296	32.92	1.14	28.96	2500	500
MJ-1	1.289	32.74	1.500	38.10	1.20	30.48	1500	300

MJS Series

Tear-Tab Caps for Straight Metric Threads

MJS Series tear-tab caps for straight metric threads feature an extra-wide ribbed tab that allows for easy installation and removal. The caps are translucent gold, making it possible to view an O-ring on the fitting.

Material: Low-Density Polyethylene **Color:** Gold



Tear-Tab Caps for Straight Metric Threads MJS Series

Caplugs No.	To Fit Tube Size	To Fit Thread Size	Dimensions				Packaging	
			A		B		Carton Quantity	Mini Pak Quantity
			mm	In	mm	In		
MJS-18	3/8	M-18	.713	18.11	.56	14.2	5000	1000
MJS-20	1/2	M-20	.791	20.09	.56	14.2	5000	1000
MJS-22	5/8	M-22	.870	22.09	.48	12.2	5000	1000
MJS-27	3/4	M-27	1.067	27.10	.67	17.2	2500	500

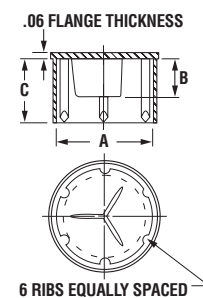
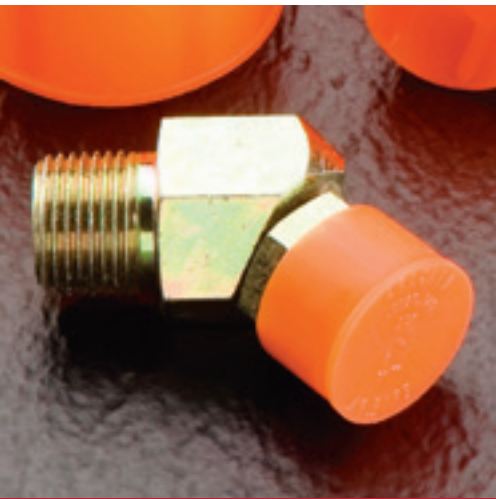
OF Series

Caps for Long-Threaded Connectors

OF Series caps for long-threaded connectors feature six internal ribs that create a positive grip on the outer surface of the fittings nut. Contamination and damage are prevented by three internal webs that act as a positive stop and positioning feature to the fitting during installation.

- Caps for various thread sizes
- Orange color for visibility

Material: Low-Density Polyethylene **Color:** Orange



Caps for Long-Threaded Connectors OF Series

Caplugs No.	To Cap Thread Size	Fitting Size	Dimensions						Packaging	
			A		B		C		Carton Quantity	Mini Pak Quantity
			In	mm	In	mm	In	mm		
OF-4	9/16	-4	.675	17.15	.32	8.13	.49	12.45	3500	700
OF-6	11/16	-6	.790	20.07	.37	9.40	.57	14.48	2500	500
OF-8	13/16	-8	.916	23.27	.43	10.92	.73	18.54	3000	600
OF-10	1	-10	1.108	28.14	.53	13.46	.83	21.08	2000	400
OF-12	1-13/16	-12	1.360	34.54	.57	14.48	.93	23.62	1000	200
OF-16S	1-7/16	-16	1.580	40.89	.58	14.73	1.00	25.40	900	180
OF-16	1-7/16	-16	1.610	40.13	.58	14.73	1.00	25.40	900	180
OF-20	1-11/16	-20	1.860	47.24	.58	14.73	1.00	25.40	700	140
OF-24	2	-24	2.230	56.64	.58	14.73	1.00	25.40	450	90

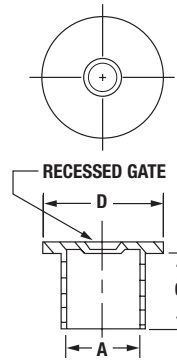
PM Series Push-On Metric Caps



PM Series push-on metric caps are durable caps with a flange for easy installation and removal. The versatile design enables the cap to be reused on a wide variety of threaded and non-threaded fittings.

- Fits common metric thread sizes

Material: Low-Density Polyethylene **Color:** Yellow Tint



Push-On Metric Caps PM Series

Caplugs No.	To Cap Metric Thread Size	Dimensions						Packaging	
		A		C		D		Carton Quantity	Mini Pak Quantity
		In	mm	In	mm	In	mm		
PM-10	M10	.384	9.75	.323	8.20	.689	17.50	7000	1400
PM-12	M12	.463	11.75	.470	11.95	.768	19.50	7000	1400
PM-14	M14	.540	13.72	.470	11.95	.846	21.50	6000	1200
PM-16	M16	.617	15.67	.470	11.95	.925	23.50	5000	1000
PM-18	M18	.696	17.68	.470	11.95	1.004	25.50	5000	1000
PM-20	M20	.774	19.66	.553	14.05	1.083	27.50	3000	600
PM-22	M22	.855	21.72	.553	14.05	1.161	29.50	3000	600
PO-100	M27	1.051	26.70	.750	19.05	1.310	33.27	2250	450
PO-110	M30	1.175	29.85	.750	19.05	1.440	36.58	2000	400
PM-33	M33	1.285	32.65	.689	17.50	1.594	40.50	1000	200
PM-38	M38	1.481	37.62	.689	17.50	1.791	44.50	1000	200
PM-42	M42	1.641	41.68	.689	17.50	1.949	49.50	1000	200
PO-160	M48	1.861	47.27	.970	24.64	2.120	53.85	1000	200

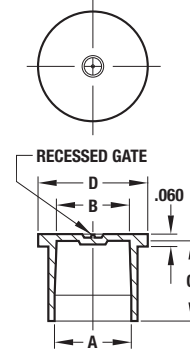
PN Series Push-On NPT Caps



PN Series push-on NPT caps are durable with a flange for easy installation and removal. The versatile design enables the cap to be reused on a wide variety of threaded and non-threaded fittings.

- Fits common metric thread sizes

Material: Low-Density Polyethylene **Color:** Red Tint



Push-On NPT Caps PN Series

Caplugs No.	To Cap NPT Size	Dimensions								Packaging	
		A		B		C		D		Carton Quantity	Mini Pak Quantity
		In	mm	In	mm	In	mm	In	mm		
PN-2	1/8	.399	10.13	.383	9.73	.38	9.65	.66	16.76	15000	3000
PN-4	1/4	.533	13.54	.508	12.90	.53	13.46	.81	20.57	9000	1800
PN-6	3/8	.669	16.99	.644	16.36	.53	13.46	.94	23.88	5000	1000
PN-8	1/2	.833	21.16	.800	20.32	.72	18.29	1.09	27.69	2500	500
PN-12	3/4	1.045	26.54	1.011	25.68	.75	19.05	1.31	33.27	3500	700
PN-16	1	1.310	33.27	1.267	32.18	.93	23.62	1.56	39.62	1000	200
PN-20	1-1/4	1.655	42.04	1.611	40.92	.97	24.64	1.94	49.28	800	160
PN-24	1-1/2	1.893	48.08	1.848	46.94	.97	24.64	2.16	54.86	2000	400
PN-32	2	2.370	60.20	2.323	59.00	1.03	26.16	2.62	66.55	600	120

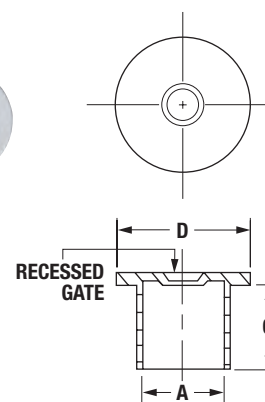
PO Series Push-On Straight-Thread Caps



PO Series push-on straight-thread caps are designed to protect straight threads with or without O-rings, yet the versatile design allows for use on a variety of threaded or non-threaded fittings.

- Protects straight threads

Material: Low-Density Polyethylene **Color:** Natural



Push-On Straight-Thread Caps PO Series

Caplugs No.	To Cap Thread Size	Dimensions						Packaging	
		A		C		D		Carton Quantity	Mini Pak Quantity
		In	mm	In	mm	In	mm		
PO-20	7/16	.428	10.87	.47	11.94	.69	17.53	10000	2000
PO-30	1/2	.490	12.45	.47	11.94	.75	19.05	7000	1400
PO-40	9/16	.550	13.97	.50	12.70	.81	20.57	7500	1500
PO-50	11/16	.676	17.17	.50	12.70	.94	23.88	5000	1000
PO-55	-	.721	19.84	.67	17.02	1.00	25.40	3500	700
PO-60	3/4	.738	20.04	.67	17.02	1.00	25.40	3500	700
PO-70	13/16	.802	20.37	.56	14.22	1.06	26.92	3500	700
PO-80	7/8	.864	21.95	.66	16.76	1.12	28.45	2500	500
PO-90	1	.990	25.15	.66	16.76	1.25	31.75	3000	600
PO-100	1-1/16	1.051	26.70	.75	19.05	1.31	33.27	2250	450
PO-110	1-3/16	1.175	29.85	.75	19.05	1.44	36.58	2000	400
PO-120	1-5/16	1.298	32.97	.75	19.05	1.56	39.62	1500	300
PO-130	1-7/16	1.426	36.22	.75	19.05	1.69	42.93	1000	200
PO-140	1-5/8	1.612	40.94	.85	21.59	1.88	47.75	1000	200
PO-150	1-11/16	1.674	42.52	.85	21.59	1.94	49.28	800	160
PO-160	1-7/8	1.861	47.27	.97	24.64	2.12	53.85	1000	200
PO-170	2	1.985	50.42	1.09	27.69	2.25	57.15	800	160
PO-180	2-1/2	2.481	63.02	1.22	30.99	2.75	69.85	500	100

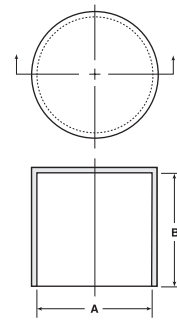
SC Series Sleeve Caps for Tube Ends



Series SC Sleeve Caps are designed to fit outside diameters of tubing sizes listed with a snug friction grip. Available in over 128 different outside diameters and lengths, the SC Series is ideal for capping and protecting both threaded and non-threaded tubing or rod ends. They also make excellent masks for painting, plating or grit-blasting operations.

Material: Low-Density Polyethylene **Color:** Red

Applicable Specs: NAS 844



Sleeve Caps for Tube Ends SC Series

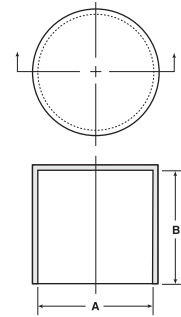
** Material for this part is Polyolefin Elastomer.

† Parts have external ribs.

†† Parts have internal ribs.

Caplugs No.	Dimensions				Packaging	
	A - Press Fit on O.D.		B		Carton Quantity	Mini Pak Quantity
	In	mm	In	mm		
SC-5/64**	.078	1.98	.50	12.70	5000	1000
SC-3/32	.094	2.38	.59	14.99	5000	1000
SC-1/8	.125	3.18	.59	14.99	5000	1000
SC-211-L	.125	3.18	.75	19.05	25000	5000
SC-5/32	.156	3.97	.56	14.22	5000	1000
SC-212-S	.172	4.37	.62	15.75	10000	2000
SC-3/16-5	.188	4.76	.35	8.89	5000	1000
SC-213-S	.188	4.78	.47	11.94	25000	5000
SC-3/16-10	.188	4.76	.59	14.99	5000	1000
SC-3/16-16	.188	4.76	1.00	25.40	5000	1000
SC-213-R	.203	5.16	.62	15.75	15000	3000
SC-7/32	.219	5.56	.75	19.05	5000	1000
SC-1/4-4	.250	6.35	.22	5.59	5000	1000
SC-1/4-7	.250	6.35	.44	11.18	5000	1000
SC-214-S	.250	6.35	.50	12.70	15000	3000
SC-1/4-14	.250	6.35	.88	22.35	5000	1000
SC-1/4-16	.250	6.35	1.00	25.40	5000	1000
SC-274-G	.266	6.76	.75	19.05	10000	2000
SC-9/32	.281	7.14	.75	19.05	5000	1000
SC-1805 ††	.313	7.92	.38	9.65	18000	3600
SC-5/16	.313	7.94	.88	22.35	5000	1000
SC-216-T	.375	9.53	.46	11.68	20000	4000
SC-155 †	.375	9.53	.75	19.05	10000	2000
SC-3/8	.375	9.53	.88	22.35	5000	1000
SC-216-L	.375	9.53	1.12	28.45	7500	1500
SC-1030	.422	10.72	1.25	31.75	5000	1000
SC-773	.438	11.11	.22	5.59	15000	3000
SC-7/16-8	.438	11.11	.50	12.70	5000	1000
SC-159 †	.438	11.11	.62	15.75	10000	2000
SC-7/16-14	.438	11.11	.88	22.35	5000	1000
SC-217-L	.438	11.11	1.50	38.10	5000	1000
SC-7/16-16	.438	11.11	1.00	25.40	5000	1000
SC-157 †	.469	11.90	.75	19.05	7500	1500
SC-161 †	.500	12.70	.44	11.18	15000	3000
SC-1/2-8	.500	12.70	.50	12.70	5000	1000
SC-1/2-14	.500	12.70	.88	22.35	5000	1000
SC-1/2-24	.500	12.70	1.50	38.10	2500	500
SC-176 †	.563	14.27	.42	10.67	10000	2000
SC-9/16-9	.563	14.29	.56	14.22	5000	1000
SC-219-S	.563	14.27	.62	15.75	7500	1500
SC-9/16-14	.563	14.29	.88	22.35	5000	1000
SC-1868	.625	15.87	.64	16.26	6500	1300
SC-5/8	.625	15.88	.88	22.35	5000	1000
SC-981 ††	.625	15.88	.88	22.35	5000	1000
SC-220-H	.625	15.88	.94	23.88	5000	1000
SC-220-U	.625	15.88	1.50	38.10	2000	400
SC-1834	.625	15.88	2.50	63.50	1000	200
SC-221-S	.688	17.48	.75	19.05	5000	1000
SC-11/16	.688	17.46	.88	22.35	5000	1000
SC-1775	.740	18.80	.88	22.35	3500	700
SC-222-S	.750	19.05	.38	9.65	7500	1500
SC-3/4	.750	19.05	.88	22.35	5000	1000
SC-3/4-16	.742	18.85	1.00	25.40	5000	1000
SC-222-H	.750	19.05	.94	23.88	2500	500
SC-222-L	.750	19.05	2.47	62.74	4000	800
SC-25/32	.781	19.84	1.00	25.40	5000	1000
SC-835	.813	20.65	.69	17.53	3500	700
SC-13/16	.813	20.64	.88	22.35	5000	1000

SC Series Sleeve Caps for Tube Ends (cont.)



Caplugs No.	Dimensions				Packaging	
	A - Press Fit on O.D.		B		Carton Quantity	Mini Pak Quantity
	In	mm	In	mm		
SC-201-T	.875	22.23	.62	15.75	2500	500
SC-201-S	.875	22.23	.62	15.75	3500	700
SC-7/8	.875	22.23	.88	22.35	5000	1000
SC-201-M	.875	22.23	1.75	44.45	1000	200
SC-748	.906	23.00	.75	19.05	2500	500
SC-1202	.906	23.83	.88	22.35	2500	500
SC-15/16	.938	23.81	1.00	25.40	2500	500
SC-15/16-23	.940	23.88	1.45	36.83	3000	600
SC-1784	1.000	25.40	.50	12.70	3500	700
SC-2003	1.000	25.40	.50	12.70	3500	700
SC-1364	1.000	25.40	.62	15.75	2000	400
SC-138	1.000	25.40	.75	19.05	2500	500
SC-1	1.000	25.40	1.00	25.40	2500	500
SC-138-L	1.000	25.40	1.75	44.45	1000	200
SC-1-1/16	1.063	26.99	1.00	25.40	2500	500
SC-224	1.125	28.58	.88	22.35	1500	300

Sleeve Caps for Tube Ends (cont.) SC Series

Caplugs No.	Dimensions				Packaging	
	A - Press Fit on O.D.		B		Carton Quantity	Mini Pak Quantity
	In	mm	In	mm		
SC-1-1/8	1.125	28.58	1.00	25.40	2500	500
SC-1-1/8-21	1.125	28.58	1.31	33.27	2000	400
SC-1-3/16	1.188	30.16	1.00	25.40	2500	500
SC-289-S	1.250	31.75	.50	12.70	2000	400
SC-1831	1.250	31.75	.87	22.10	1000	200
SC-1-1/4	1.250	31.75	1.00	25.40	2000	400
SC-289-M	1.250	31.75	1.50	38.10	700	140
SC-289-L	1.250	31.75	1.75	44.45	500	100
SC-1-5/16-12	1.313	33.34	.75	19.05	3000	600
SC-1-5/16	1.313	33.34	1.00	25.40	1000	200
SC-760	1.375	35.00	.62	15.75	1000	200
SC-1-3/8	1.375	34.92	1.00	25.40	1000	200
SC-428	1.375	35.00	1.50	38.10	500	100
SC-428-2	1.375	35.00	1.59	40.39	500	100
SC-1 1/2	1.500	38.10	1.00	25.40	1000	200
SC-290-L	1.500	38.10	1.75	44.45	500	100
SC-1975	1.500	38.10	.87	22.10	1000	200
SC-1-5/8	1.625	41.28	1.00	25.40	1000	200
SC-291-L	1.625	41.28	1.25	31.75	500	100
SC-291-2	1.719	43.65	1.00	25.40	500	100
SC-1008	1.750	44.45	.88	22.35	500	100
SC-1-3/4	1.750	44.45	1.00	25.40	1000	200
SC-291-3	1.844	46.84	1.21	30.73	500	100
SC-1-7/8	1.875	47.63	1.00	25.40	1000	200
SC-1-29/32	1.906	48.41	1.00	25.40	1000	200
SC-2	2.000	50.80	.88	22.35	1000	200
SC-226	2.000	50.80	1.00	25.40	1000	200
SC-226-L	2.000	50.80	1.53	38.86	250	50
SC-1025	2.125	53.98	.50	12.70	1000	200
SC-2-1/8	2.125	53.98	1.00	25.40	500	100
SC-2-1/4	2.250	57.15	.88	22.35	500	100
SC-1365	2.250	57.15	1.00	25.40	300	60
SC-2-3/8	2.375	60.33	.88	22.35	500	100
SC-2-1/2	2.500	63.50	.88	22.35	500	100
SC-2-9/16	2.563	65.10	1.00	25.40	500	100
SC-372	2.609	66.27	1.00	25.40	1000	200
SC-2-5/8	2.625	66.68	1.00	25.40	500	100
SC-2-3/4	2.750	69.85	1.00	25.40	500	100
SC-3	3.000	76.20	1.00	25.40	450	90
SC-3-1/16	3.062	77.77	2.00	50.80	200	40
SC-3-1/8	3.125	79.38	1.38	35.05	250	50
SC-1528	3.250	82.55	1.00	25.40	800	160
SC-3-5/16	3.313	84.14	1.00	25.40	400	100
SC-1563	3.438	87.31	1.00	25.40	700	140
SC-1521	3.500	88.90	1.00	25.40	600	120
SC-3-1/2	3.500	88.90	1.38	35.05	250	50
SC-2215	3.531	89.69	2.00	50.80	300	60
SC-3-5/8	3.625	92.08	1.38	35.05	250	50
SC-3-3/4	3.750	95.25	1.38	35.05	200	40
SC-4	4.000	101.60	1.38	35.05	250	50
SC-1540	4.000	101.60	1.13	28.70	500	100
SC-4-1/8	4.125	104.78	1.50	38.10	120	24
SC-4-1/2	4.500	114.30	1.44	36.58	100	20
SC-1400	4.813	122.25	.64	16.26	500	100
SC-1363	4.875	123.83	.92	23.37	350	70
SC-5-1/8	5.125	130.18	1.63	41.40	100	20
SC-5-1/4	5.250	133.36	1.80	45.72	50	n/a
SC-324-3	8.000	203.20	2.30	58.42	40	8

PZC Series

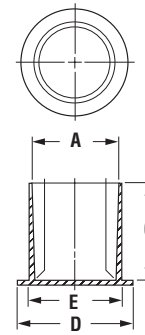
Sleeve Caps for Tube Ends



PZC Series sleeve caps for tube ends are designed to protect unified threads, but can also be used on both threaded and non-threaded fittings. The cap also doubles as a plug.

- Flanged for easy installation and removal

Material: Low-Density Polyethylene **Color:** Orange



Sleeve Caps for Tube Ends PZC Series

† Has four external vertical ribs.

Caplugs No.	To Cap Thread Size	Dimensions								Packaging	
		A		C		D		E		Carton Quantity	Mini Pak Quantity
		In	mm	In	mm	In	mm	In	mm		
PZC-1	3/8	.360	9.14	.66	16.76	.53	13.49	.42	10.67	10000	2000
PZC-3 †	7/16	.430	10.92	.56	14.22	.62	15.88	.49	12.45	10000	2000
PZC-912	9/16	.551	14.00	.83	21.08	.75	19.05	.61	15.52	5000	1000
PZC-5-1	5/8	.605	15.37	.47	11.94	.81	20.65	.66	16.89	7500	1500
PZC-5 †	5/8	.605	15.37	.75	19.05	.81	20.65	.66	16.89	5000	1000
PZC-6	11/16	.627	15.93	.47	11.94	.94	23.88	-	-	5000	1000
PZC-71	-	.785	19.94	.58	14.73	1.00	25.40	.86	21.97	4000	800
PZC-7A †	-	.780	19.81	.72	18.29	1.00	25.40	.84	21.34	3500	700
PZC-8A	13/16	.795	20.19	.63	16.00	1.05	26.59	.85	21.72	2500	500
PZC-9	-	.780	19.81	.92	23.37	1.12	28.58	.84	21.34	2500	500
PZC-10 †	7/8	.845	21.46	.83	21.08	1.14	28.98	.90	22.99	2000	400

RC Series

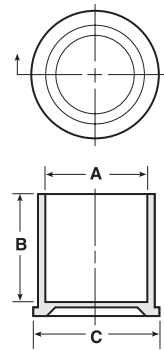
Caps for Threaded Connectors



RC Series caps for threaded connectors originated for the automotive and air conditioning industries, but are now suitable for a multitude of applications. The caps can be installed to fit threaded or smooth cylindrical surfaces.

- Straight cap

Material: Low-Density Polyethylene **Color:** Red



Caps for Threaded Connectors RC Series

† Has three internal ribs.

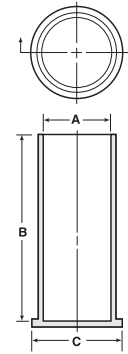
Caplugs No.	To Cap Thread Size	Dimensions						Packaging	
		A		B		C		Carton Quantity	Mini Pak Quantity
		In	mm	In	mm	In	mm		
RC-FT-2211 †	5/16	.31	8.00	.84	21.34	.51	12.95	10000	2000
RC-6	3/8	.37	9.50	.47	11.94	.60	15.24	5000	1000
RC-FT-2210 †	3/8	.37	9.58	.84	21.34	.58	14.73	7500	1500
RC-7	7/16	.42	10.74	.59	14.99	.57	14.48	5000	1000
RC-M12	12mm	.47	11.99	.47	11.94	.70	17.78	5000	1000
RC-8	1/2	.49	12.67	.55	13.97	.73	18.54	5000	1000
RC-FT-2097	M14	.53	13.59	.81	20.57	.69	17.53	5000	1000
RC-9	9/16	.56	14.25	.48	12.19	.79	20.07	5000	1000
RC-10	5/8	.61	15.49	.84	21.34	.76	19.30	5000	1000
RC-FT-220	5/8	.61	15.52	.88	22.35	.75	19.05	5000	1000
RC-11	11/16	.66	16.97	.84	21.34	.83	21.08	5000	1000
RC-11-7	11/16	.67	17.12	.47	11.94	.92	23.37	5000	1000
RC-11A	-	.67	17.22	.88	22.35	.84	21.34	4500	900
RC-M18	18mm	.69	17.75	1.00	25.40	.93	23.62	3000	600
RC-12	3/4	.73	18.67	.88	22.35	.90	22.86	5000	1000
RC-12-10	3/4	.73	18.75	.65	16.51	.98	24.89	5000	1000
RC-13	13/16	.81	20.60	.56	14.22	1.04	26.42	5000	1000
RC-14	7/8	.86	21.84	.84	21.34	1.02	25.91	5000	1000
RC-14-12	7/8	.86	21.84	.75	19.05	1.11	28.19	4000	800
RC-FT-201	7/8	.86	22.00	.88	22.35	1.03	26.16	2500	500
RC-16	1	.99	25.35	.65	16.51	1.23	31.24	3000	600
RC-17	1-1/16	1.04	26.59	.89	22.61	1.21	30.73	2500	500
RC-FT-448-1	1-1/16	1.04	26.62	1.12	28.45	1.22	30.99	1000	200
RC-19	1-3/16	1.18	30.12	.77	19.56	1.42	36.07	2000	400
RC-21	1-5/16	1.31	33.30	.90	22.86	1.54	39.12	1000	200
RC-21-11	1-5/16	1.31	33.32	.66	16.76	1.53	38.86	2500	500
RC-23	1-7/16	1.43	36.47	.70	17.78	1.67	42.42	1000	200
RC-25	1 9/16	1.53	38.86	.48	12.19	1.71	43.43	3000	600
RC-26	1-5/8	1.63	41.45	.95	24.13	1.86	47.24	1000	200
RC-27	1-11/16	1.68	42.82	.70	17.78	1.92	48.77	1000	200
RC-30	1-7/8	1.88	47.83	1.08	27.43	2.12	53.85	800	160
RC-40	2-1/2	2.50	63.70	1.30	33.02	2.75	69.85	400	80
RC-56	3-1/2	3.50	88.90	1.34	34.04	4.09	103.89	250	50

RCL Series

Caps for Long-Threaded Connectors

RCL Series long-threaded connectors are ideal for protecting threaded or smooth cylindrical surfaces. The connectors were originally designed for use on hydraulic double-threaded bulkhead fittings, but are especially suitable where greater longitudinal protection is required.

Material: Low-Density Polyethylene **Color:** Red



Caps for Long-Threaded Connectors RCL Series

† RCL-14-50 is HDPE material

Caplugs No.	To Cap Thread Size	Dimensions						Packaging	
		A		B		C		Carton Quantity	Mini Pak Quantity
		In	mm	In	mm	In	mm		
RCL-2 (B-203-2)	5/16	.308	7.82	1.24	31.50	.46	11.68	5000	1000
RCL-3	3/8	.370	9.40	1.24	31.50	.52	13.21	5000	1000
RCL-4	7/16	.429	10.90	1.33	33.78	.58	14.73	5000	1000
RCL-5	1/2	.490	12.45	1.33	33.78	.64	16.26	5000	1000
RCL-6 (B-203-6)	9/16	.552	14.02	1.41	35.82	.70	17.78	5000	1000
RCL-8 (B-203-8)	3/4	.739	18.77	1.56	39.63	.88	22.35	2500	500
RCL-8L	3/4	.739	18.77	2.66	67.56	.88	22.35	2000	400
RCL-9	M-20 (.787)	.791	20.09	1.56	39.63	.91	23.11	2500	500
RCL-9L	-	.830	21.08	2.66	67.56	1.01	25.65	1000	200
RCL-10	7/8	.861	21.87	1.70	43.18	1.01	25.66	2500	500
RCL-10L	7/8	.861	21.87	2.66	67.56	1.01	25.66	1500	300
RCL-11	.995	.995	25.27	1.80	45.72	1.15	29.21	1500	300
RCL-12	1-1/16	1.049	26.64	1.89	48.01	1.19	30.23	1000	200
RCL-12L	1-1/16	1.049	26.64	3.00	76.20	1.19	30.23	900	180
RCL-14	1-1/8	1.135	28.83	2.12	53.85	1.25	31.75	1500	300
RCL-14-50 †	1-1/8	1.131	28.73	3.10	78.74	1.44	36.58	900	180
RCL-16	1-5/16	1.299	32.99	1.89	48.01	1.44	36.58	1000	200
RCL-18	-	1.459	37.06	2.24	56.90	1.61	40.89	500	100
RCL-20	1-5/8	1.611	40.92	1.92	48.77	1.76	44.71	500	100
RCL-22 (FL-160)	1-7/8	1.861	47.24	1.94	49.28	2.01	51.05	300	60

ASC Series

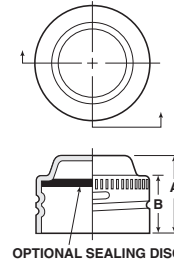
Threaded Aluminum Caps for Threaded Flared Fittings

ASC Series threaded aluminum caps for threaded flared fittings are designed with a nose-section that forms a low-pressure seal.

- Optional sealing discs (ASC-DN Series) for positive seal available in Neoprene, Butyl and Buna N Rubber

Material: 3003-0 Aluminum Alloy **Color:** Silver

Applicable Specs: NAS 835



Threaded Aluminum Caps for Threaded Flared Fittings ASC Series

Caplugs No.	To Fit Tube Size	To Fit Thread Size	Dimensions				Packaging	
			A		B		Carton Quantity	Mini Pak Quantity
			In	mm	In	mm		
ASC-2	1/8	5/16 - 24	.42	10.67	.33	9.65	5000	1000
ASC-3	3/16	3/8 - 24	.43	10.92	.30	7.62	5000	1000
ASC-4	1/4	7/16 - 20	.54	13.72	.46	11.68	5000	1000
ASC-5	5/16	1/2 - 20	.52	13.21	.43	10.92	5000	1000
ASC-6	3/8	9/16 - 18	.54	13.72	.46	11.68	6000	1000
ASC-7	7/16	5/8 - 18	.61	15.49	.52	13.21	5000	1000
ASC-8	1/2	3/4 - 16	.64	16.26	.55	13.97	6000	1000
ASC-10	5/8	7/8 - 14	.74	18.80	.65	16.51	3700	500
ASC-12	3/4	1-1/16 - 12	.85	21.59	.76	19.30	2200	500
ASC-16	1	1-5/16 - 12	.86	21.84	.78	19.81	1400	200
ASC-20	1-1/4	1-5/8 - 12	.87	22.22	.71	18.25	950	190

CD Series

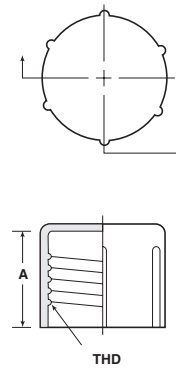
Threaded Plastic Caps for Flared JIC Fittings

CD Series threaded caps for flared JIF fittings protect against dirt, moisture and other contaminants. The cap can also be used as a mask during dipping, painting and plating.

- Knurled for ease of application

Material: Low-Density Polyethylene **Color:** Red

Applicable Specs: NAS 832



Threaded Plastic Caps for Flared JIC Fittings CD Series

Caplugs No.	To Fit Nominal Tubing Size	To Fit Thread Sizw	Dimensions		No. of Knurls	Packaging	
			A			Carton Quantity	Mini Pak Quantity
			In	mm			
CD-2	-	1/4 - 36	.22	5.55	4	5000	1000
CD-3	3/16	3/8 - 24	.47	11.94	4	5000	1000
CD-4	1/4	7/16 - 20	.47	11.94	4	5000	1000
CD-41	1/4	7/16 - 24	.30	7.62	4	5000	1000
CD-5	5/16	1/2 - 20	.47	11.94	6	5000	1000
CD-TC-40	5/16	1/2 - 20	.31	7.87	6	5000	1000
CD-TC-42	5/16	1/2 - 20	.88	22.35	6	5000	1000
CD-6	3/8	9/16 - 18	.53	13.46	6	5000	1000
CD-TC-6	3/8	5/8 - 18	.47	11.94	6	7500	1500
CD-6A	3/8	5/8 - 18	.53	13.46	6	5000	1000
CD-TC-63	3/8	5/8 - 18	.75	19.05	6	5000	1000
CD-67	-	5/8 - 24	.41	10.41	6	5000	1000
CD-8	1/2	3/4 - 16	.57	14.48	6	5000	1000
CD-TC-8-S	1/2	3/4 - 16	.50	12.70	6	5000	1000
CD-TC-8-R	1/2	3/4 - 16	.63	16.00	6	4500	900
CD-TC-82	-	3/4 - 18	.69	17.53	6	5000	1000
CD-TC-9	-	3/4 - 20	.50	12.70	6	5000	1000
CD-10	5/8	7/8 - 14	.68	17.27	6	5000	1000
CD-101	5/8	7/8 - 18	.44	11.18	6	5000	1000
CD-TC-111	5/8	7/8 - 18	.78	19.81	6	5000	1000
CD-TC-100	5/8	7/8 - 20	.72	18.29	6	4000	800
CD-11	-	1 - 14	.78	19.81	8	2500	500
CD-TC-120	-	1 - 20	.78	19.81	8	2000	400
CD-12	3/4	1-1/16 - 12	.75	19.05	8	2500	500
CD-TC-14	3/4	1-1/16 - 14	.75	19.05	8	1500	300
CD-TC-15	-	1-1/8 - 18	.47	11.94	8	2500	500
CD-14	7/8	1-3/16 - 12	.94	23.88	6	2500	500
CD-TC-17	-	1-1/4 - 18	.47	11.94	8	2000	400
CD-TC-18	-	1-5/16 - 12	.88	22.35	8	1000	200
CD-TC-19	-	1-3/8 - 18	.47	11.94	8	1500	300
CD-18	-	1-1/2 - 12	.75	19.05	8	1000	200
CD-TC-20	1-1/4	1-5/8 - 12	.91	23.11	8	750	150
CD-22	-	1-3/4 - 12	.94	23.88	8	1000	200
CD-TC-21	1-1/2	1-7/8 - 12	1.00	25.40	8	700	140
CD-400	-	3 - 12	1.16	29.47	12	250	50

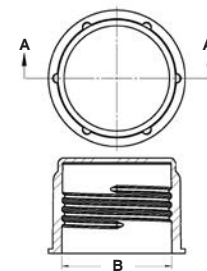
CD-M Series

Threaded Plastic Caps for Metric Fittings

CD-M Series threaded caps for metric fittings protect against dirt, moisture and other contaminants. The cap can also be used as a mask during dipping, painting and plating.

- Knurled for ease of application

Material: Low-Density Polyethylene **Color:** Green



Threaded Plastic Caps for Metric Fittings CD-M Series

Caplugs No.	To Cap Metric Thread Size	Dimensions				Packaging	
		A		B		Carton Quantity	Mini Pak Quantity
		In	mm	In	mm		
CD-M-12X1.5	M12 x 1.5	.55	13.97	.66	16.76	5000	1000
CD-M-14X1.5	M14 x 1.5	.55	13.97	.87	22.10	5000	1000
CD-M-16X1.5	M16 x 1.5	.59	14.99	.87	22.10	5000	1000
CD-M-18X1.5	M18 x 1.5	.60	15.24	.90	22.86	5000	1000
CD-M-20X1.5	M20 x 1.5	.60	15.24	.97	24.64	5000	1000
CD-M-22X1.5	M22 x 1.5	.60	15.24	1.05	26.67	5000	1000

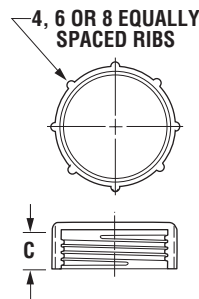
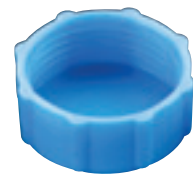
DC Series

UN/UNS Caps

DC Series UN/UNS caps seal out contaminants while protecting threads. The rolled threads allow the cap to be pushed on or threaded on.

- Threads meet UN and UNS specifications

Material: High-Density Polyethylene **Color:** Blue



UN/UNS Caps DC Series

Caplugs No.	Dimensions				Packaging	
	To Fit Tube Size	To Fit Thread Size	C		Carton Quantity	Mini Pak Quantity
			In	mm		
DC-3	3/16	3/8 - 28	.20	5.08	10000	2000
DC-4	1/4	7/16 - 24	.24	6.10	10000	2000
DC-5	5/16	1/2 - 24	.24	6.10	10000	2000
DC-6	3/8	9/16 - 20	.26	6.60	6500	1300
DC-8	1/2	23/32 - 20	.27	6.86	7500	1500
DC-10	5/8	27/32 - 18	.34	8.64	5000	1000
DC-12	3/4	1 - 16	.38	9.65	3500	700
DC-14	7/8	1-1/8 - 16	.40	10.16	3000	600
DC-16	1	1-1/4 - 14	.43	10.92	2000	400
DC-20	1-1/4	1-33/64 - 14	.43	10.92	1500	300
DC-21S	1-1/4	1-37/64 - 14	.43	10.92	1500	300
DC-22	1-1/4	1-9/16 - 12	.50	12.70	2000	400
DC-24	1-1/2	1-25/32 - 14	.50	12.70	1000	200
DC-25S	1-1/2	1-27/32 - 14	.50	12.70	1000	200

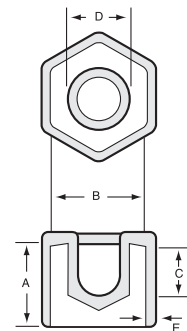
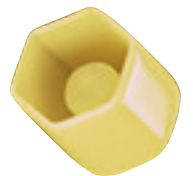
AN Series

Vinyl Hex Caps for AN-Style Fittings

AN Series vinyl hex caps for AN-Style fittings are easily installed and removed without the use of tools.

- All common hydraulic nut sizes

Material: Vinyl **Color:** Yellow
Optional Colors: White, Black, Brown, Orange, Red, Green, Gray, Blue



Vinyl Hex Cap for AN-Style Fittings AN Series

Caplugs No.	Dimensions										Packaging	
	A		B		C		D		E		Carton Quantity	Mini Pak Quantity
	In	mm	In	mm	In	mm	In	mm	In	mm		
AN-2	.550	13.97	.375	9.53	.250	6.35	.195	4.95	.055	1.40	5000	1000
AN-3	.625	15.88	.440	11.18	.370	9.40	.240	6.10	.060	1.52	5000	1000
AN-4	.645	16.38	.560	14.22	.435	11.05	.300	7.62	.060	1.52	5000	1000
AN-5	.690	17.53	.625	15.88	.475	12.07	.335	8.51	.060	1.52	5000	1000
AN-6	.725	18.42	.685	17.40	.500	12.70	.375	9.53	.065	1.65	2500	500
AN-8	.875	22.23	.875	22.23	.563	14.30	.490	12.45	.065	1.65	2500	500
AN-10	1.000	25.40	1.000	25.40	.700	17.78	.625	15.88	.065	1.65	1250	250
AN-12	1.000	25.40	1.250	31.75	.700	17.78	.750	19.05	.065	1.65	500	100
AN-14	1.100	27.94	1.375	34.93	.700	17.78	.860	21.84	.065	1.65	1000	200
AN-16	1.100	27.94	1.500	38.10	.750	19.05	.980	24.89	.065	1.65	1000	200
AN-20	1.250	31.75	1.815	46.10	.950	24.13	1.195	30.35	.065	1.65	500	100
AN-24	1.500	38.10	2.250	57.15	-	-	-	-	.075	1.91	400	80
AN-28	1.500	38.10	2.625	66.68	-	-	-	-	.075	1.91	200	40

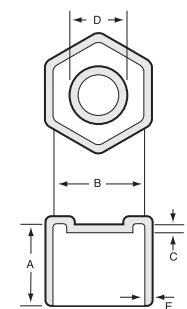
MS Series

Vinyl Hex Caps for MS-Style Fittings

MS Series vinyl hex caps are available in all common hydraulic nut sizes and bright yellow for visibility purposes.

- Aerospace quality

Material: Vinyl **Color:** Yellow
Optional Colors: White, Black, Brown, Orange, Red, Green, Gray, Blue



Vinyl Hex Caps for MS-Style Fittings MS Series

Caplugs No.	Dimensions										Packaging	
	A		B		C		D		E		Carton Quantity	Mini Pak Quantity
	In	mm	In	mm	In	mm	In	mm	In	mm		
MS-2	.550	13.97	.375	9.53	.100	2.54	.190	4.83	.055	1.40	5000	1000
MS-3	.625	15.88	.440	11.18	.100	2.54	.245	6.22	.060	1.52	5000	1000
MS-4	.725	18.42	.560	14.22	.100	2.54	.250	6.35	.060	1.52	5000	1000
MS-6	.800	20.32	.685	17.40	.100	2.54	.375	9.53	.060	1.52	5000	1000
MS-8	.825	20.96	.870	22.10	.110	2.79	.500	12.70	.065	1.60	1000	200
MS-10	1.000	25.40	.995	25.27	.190	4.83	.635	16.13	.065	1.65	1000	200
MS-11	1.000	25.40	1.125	28.58	-	-	-	-	.065	1.65	1250	500
MS-12	1.020	25.91	1.250	31.75	.190	4.83	.795	20.19	.065	1.65	500	100
MS-14	1.050	26.67	1.375	34.93	.125	3.18	.860	21.84	.065	1.65	1000	200
MS-16	1.180	29.97	1.500	38.10	.125	3.18	1.000	25.40	.065	1.65	1000	200
MS-20	1.250	31.75	1.815	46.10	.125	3.18	1.225	31.12	.065	1.65	500	100
MS-24	1.500	38.10	2.250	57.15	-	-	-	-	.075	1.91	400	80
MS-28	1.500	38.10	2.625	66.68	-	-	-	-	.075	1.91	200	40

FLEX 500 Several vinyl series are available in temperature-resistant Flex500®

FLEX 500 Several vinyl series are available in temperature-resistant Flex500®

EZ Series

Flexible Vinyl Caps with Pull-Tabs for Easy Removal



EZ Series flexible vinyl caps with pull-tabs for easy removal provide protection against dirt, moisture and impact damage. The caps feature an extra-long tab centered at the top of the closure that allows the cap to be finger-removed easily, eliminating the use of tools that could damage threads or part surfaces.

- Flexible vinyl enables a snug fit

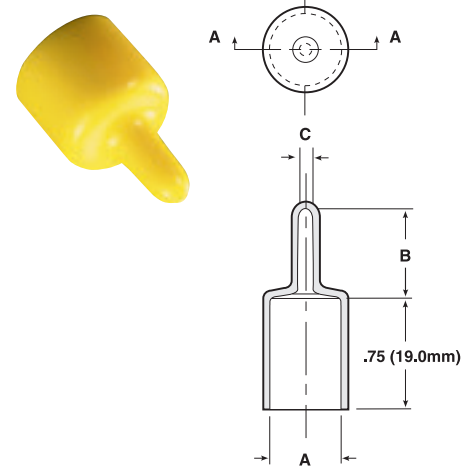
Material: Vinyl **Color:** Black and Red

Optional Colors: White, Brown, Orange, Gray, Blue, Yellow, Green

Note: For high temperature applications see our HEZ series caps.



Several vinyl series are available in temperature-resistant Flex500®



† Mini and Micro Paks available in standard color.

‡ Minimum order for Micro Paks is 2.

Flexible Vinyl Caps with Pull-Tabs for Easy Removal EZ Series

Caplugs No.	Dimensions						Packaging		
	A		B		C		Carton Quantity	Mini Pak † Quantity	Micro Pak ‡ Quantity
	In	mm	In	mm	In	mm			
EZ-187-12	.187	4.74	.500	12.70	.093	2.36	5000	1000	n/a
EZ-215-12	.215	5.46	.500	12.70	.093	2.36	5000	1000	n/a
EZ-240-12	.240	6.09	.625	15.87	.125	3.17	4000	800	50
EZ-303-12	.303	7.69	.625	15.87	.125	3.17	4000	800	50
EZ-312-12	.312	7.92	.750	19.05	.122	3.10	4000	800	n/a
EZ-360-12	.360	9.14	.750	19.05	.135	3.43	7000	1400	n/a
EZ-365-12	.365	9.27	.625	15.87	.125	3.17	3500	700	50
EZ-386-12	.386	9.80	.625	15.87	.125	3.17	4000	800	n/a
EZ-406-12	.406	10.31	.625	15.87	.125	3.17	4000	800	n/a
EZ-427-12	.427	10.84	.625	15.87	.125	3.17	3000	600	n/a
EZ-460-12	.460	11.68	.500	12.70	.100	2.54	3000	600	n/a
EZ-490-12	.490	12.44	.687	17.44	.125	3.17	2500	500	50
EZ-521-12	.521	13.23	.625	15.87	.125	3.17	2500	500	n/a
EZ-552-12	.552	14.02	.687	17.44	.125	3.17	2500	500	50
EZ-600-12	.600	15.24	.812	20.62	.187	4.75	2000	400	n/a
EZ-615-12	.615	15.62	.687	17.44	.125	3.17	2000	400	50
EZ-655-12	.655	16.63	.875	22.22	.187	4.75	2000	400	n/a
EZ-670-12	.670	17.02	.800	20.32	.190	4.83	2000	400	n/a
EZ-677-12	.677	17.19	.812	20.62	.187	4.75	2000	400	n/a
EZ-695-12	.695	17.65	.812	20.62	.187	4.75	1500	300	n/a
EZ-735-12	.735	18.66	.812	20.62	.187	4.74	1500	300	25
EZ-760-12	.760	19.30	.800	20.32	.190	4.83	2000	400	n/a
EZ-797-12	.797	20.24	.812	20.62	.187	4.75	1500	300	n/a
EZ-835-12	.835	21.20	.843	21.41	.187	4.74	1500	300	n/a
EZ-860-12	.860	21.84	.843	21.41	.187	4.74	1500	300	25
EZ-922-12	.922	23.41	.875	22.22	.187	4.74	1000	200	n/a
EZ-985-12	.985	25.01	.875	22.22	.187	4.74	1250	250	25
EZ-1048-12	1.048	27.53	1.000	25.40	.187	4.74	1000	200	n/a
EZ-1110-12	1.110	28.19	1.125	28.58	.187	4.74	1000	200	n/a
EZ-1175-12	1.175	29.85	.750	19.05	.325	8.26	1000	200	n/a
EZ-1230-12	1.230	31.24	1.125	28.58	.187	4.74	900	180	n/a
EZ-1355-12	1.355	34.41	1.125	28.58	.250	6.35	800	160	n/a
EZ-1480-12	1.480	37.59	1.000	25.40	.250	6.35	800	160	n/a

TUV Series

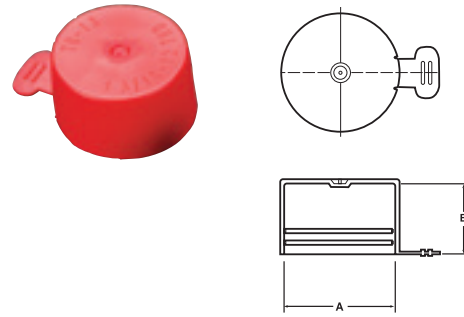
Flexible Tear-Tab Caps



TUV Series flexible tear-tab caps are highly durable caps that allow for a snug fit on a range of different-sized and odd-shaped fittings. The flexibility allows the caps to be pushed on, while the tear-tab design ensures ease of removal regardless of how tight fitting the cap is.

- Heat resistant up to 350° F
- Ideal for some finishing processes

Material: Vinyl **Color:** Red

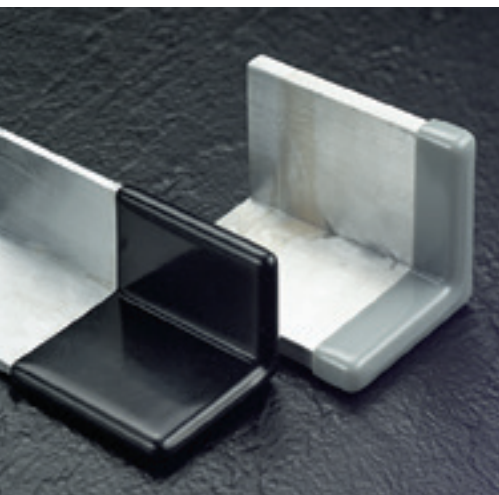


Flexible Tear-Tab Caps TUV Series

Caplugs No.	To Fit Thread Size	SAE/JIC Fitting Size	Dimensions				Packaging	
			A		B		Carton Quantity	Mini Pak Quantity
			In	mm	In	mm		
TUV-3	3/8	3	.367	9.32	.44	11.18	7500	1500
TUV-4	7/16	4	.428	10.87	.46	11.68	5000	1000
TUV-5	1/2	5	.492	12.50	.46	11.68	5000	1000
TUV-6	9/16	6	.554	14.07	.48	12.19	3500	700
TUV-6X	5/8	n/a	.616	15.65	.48	12.19	3500	700
TUV-7	11/16	7	.678	17.22	.48	12.19	2500	500
TUV-8	3/4	8	.741	18.82	.56	14.22	4000	800
TUV-9	13/16	9	.803	20.40	.56	14.22	2500	500
TUV-10	7/8	10	.865	21.97	.65	16.51	2500	500
TUV-11	1	11	.990	25.15	.65	16.51	3000	600
TUV-12	1-1/16	12	1.053	26.75	.75	19.05	2500	500
TUV-13	1-3/16	13	1.178	29.92	.75	19.05	2000	400

VAC Series

Vinyl Angle Caps

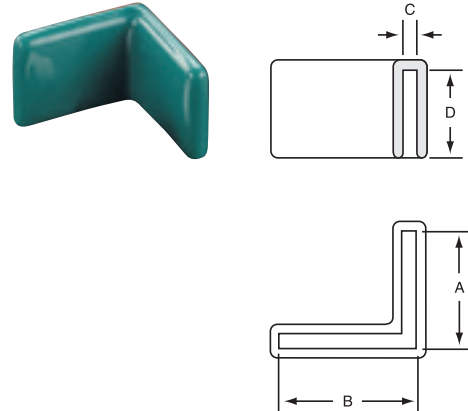


VAC Series vinyl angle caps are designed to protect angle iron. Caps are available in a variety of sizes to protect the corners of metal frames, reducing the risk of injury from sharp metal edges.

Material: Vinyl **Color:** Black
Optional Colors: White, Green, Brown, Orange, Red, Gray, Blue, Yellow

Note: VAC Series is available in lengths up to 2"

FLEX 500 Several vinyl series are available in temperature-resistant Flex500®



Vinyl Angle Caps VAC Series

Caplugs No.	Dimensions								Packaging	
	A		B		C		D		Carton Quantity	Mini Pak Quantity
	In	mm	In	mm	In	mm	In	mm		
VAC-750x750-8	.750	19.05	.750	19.05	.125	3.17	.500	12.70	3000	600
VAC-1000x1000-8	1.000	25.40	1.000	25.40	.125	3.17	.500	12.70	1500	300
VAC-1125x1875-8	1.125	28.57	1.875	47.62	.125	3.17	.500	12.70	900	180
VAC-1250x1250-8	1.250	31.75	1.250	31.75	.125	3.17	.500	12.70	1000	200
VAC-1500x1500-8	1.500	38.10	1.500	38.10	.125	3.17	.500	12.70	900	180
VAC-1875x1125-8	1.875	47.63	1.125	28.58	.125	3.17	.500	12.70	900	180
VAC-2000x2000-8	2.000	50.80	2.000	50.80	.125	3.17	.500	12.70	600	120

WCC Series

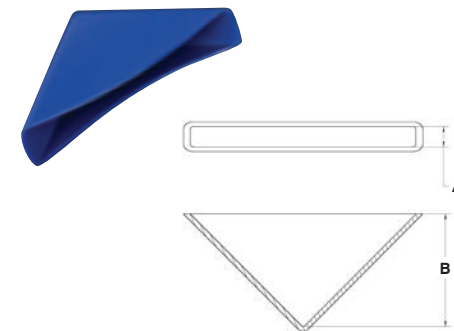
Vinyl Corner Caps



WCC Series vinyl corner caps are designed to protect the corner edges of plate glass sheet metal. The durable vinyl material allows for seamless installation. The parts are color coded by size for easy recognition. The wall thickness is .060" for all sizes.

Material: Vinyl **Color:** Color coded by size

FLEX 500 Several vinyl series are available in temperature-resistant Flex500®



Vinyl Corner Caps WCC Series

Caplugs No.	Fits Plate Thickness/Color	Dimensions				Packaging	
		A		B		Carton Quantity	Mini Pak Quantity
		In	mm	In	mm		
WCC-0187	3/16 - Green	.187	4.75	1.50	38.10	1000	200
WCC-0250	1/4 - Black	.250	6.35	2.00	50.80	1000	200
WCC-0375	3/8 - Red	.375	9.53	2.50	63.50	750	150
WCC-0500	1/2 - Yellow	.500	12.70	2.50	63.50	750	150
WCC-0750	3/4 - Blue	.750	19.05	2.50	63.50	500	100

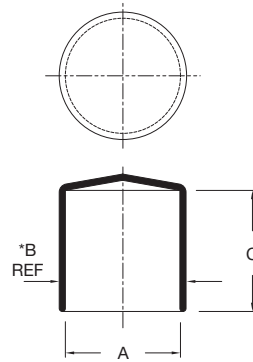
VC Series Vinyl Caps

VC Series vinyl caps are flexible and durable protective closures that are ideal for use as thread protectors, dust and moisture seals, pipe and stud end color coding, and for masking during painting or plating operations.

- Wide range of sizes
- Easy to use
- Vast color range available

Material: Vinyl **Color:** Black
Optional Colors: White, Brown, Orange, Green, Gray, Blue, Red, Yellow

- Note:**
- VC-054 is available in lengths up to .750"
 - VC-062 is available in lengths up to 1.25"
 - VC-080 through VC-125 are available in lengths up to 1.5"
 - VC-140 through VC-250 are available in lengths up to 2"
 - VC-281 through VC-24000 may be available in lengths up to 8"
 - Lengths are available in 1/16" (1.6mm) increments
 - Length tolerance is ±1/16" (1.6mm)
 - Each 1/16" = 1 (i.e. 5 = 5/16")



Note: "B" dimension provided for reference only. Measured approximately 1/4" from open end of part

FLEX 500 Several vinyl series are available in temperature-resistant Flex500®

Caplugs No.	Dimensions						Packaging		
	A		*B REF		C		Carton Quantity	Mini Pak † Quantity	Micro Pak ‡ Quantity
	In	mm	In	mm	In	mm			
VC-054-10	.054	1.37	.09	2.29	.625	15.88	5000	1000	n/a
VC-062-10	.062	1.57	.12	3.05	.625	15.88	5000	1000	100
VC-072-10	.072	1.83	.13	3.35	.625	15.88	5000	1000	n/a
VC-080-10	.080	2.03	.14	3.56	.625	15.88	5000	1000	100
VC-093-12	.093	2.36	.15	3.81	.750	19.05	5000	1000	100
VC-109-12	.109	2.77	.18	4.57	.750	19.05	5000	1000	100
VC-125-8	.125	3.18	.20	5.08	.500	12.70	5000	1000	n/a
VC-125-16	.125	3.18	.20	5.08	1.000	25.40	5000	1000	100
VC-140-8	.140	3.56	.21	5.33	.500	12.70	5000	1000	n/a
VC-140-16	.140	3.56	.21	5.33	1.000	25.40	5000	1000	100
VC-148-8	.148	3.76	.24	6.30	.500	12.70	5000	1000	n/a
VC-148-16	.148	3.76	.24	6.30	1.000	25.40	5000	1000	n/a
VC-156-8	.156	3.96	.24	6.10	.500	12.70	5000	1000	n/a
VC-156-16	.156	3.96	.24	6.10	1.000	25.40	5000	1000	100
VC-161-8	.161	4.09	.24	6.12	.500	12.70	5000	1000	n/a
VC-161-16	.161	4.09	.24	6.12	1.000	25.40	5000	1000	n/a
VC-172-8	.172	4.37	.25	6.35	.500	12.70	5000	1000	n/a
VC-172-16	.172	4.37	.25	6.35	1.000	25.40	5000	1000	100
VC-180-8	.180	4.57	.26	6.60	.500	12.70	5000	1000	n/a
VC-180-16	.180	4.57	.26	6.60	1.000	25.40	5000	1000	n/a
VC-187-8	.187	4.75	.27	6.86	.500	12.70	5000	1000	n/a
VC-187-16	.187	4.75	.27	6.86	1.000	25.40	5000	1000	100
VC-187-24	.187	4.75	.27	6.86	1.500	38.10	4000	800	n/a
VC-203-8	.203	5.16	.29	7.37	.500	12.70	5000	1000	n/a
VC-203-16	.203	5.16	.29	7.37	1.000	25.40	5000	1000	100
VC-218-8	.218	5.54	.31	7.87	.500	12.70	5000	1000	n/a
VC-218-16	.218	5.54	.31	7.87	1.000	25.40	5000	1000	100
VC-224-8	.224	5.69	.31	7.87	.500	12.70	5000	1000	n/a
VC-224-16	.224	5.69	.31	7.87	1.000	25.40	5000	1000	n/a
VC-234-8	.234	5.94	.32	8.13	.500	12.70	5000	1000	n/a
VC-234-16	.234	5.94	.32	8.13	1.000	25.40	5000	1000	100
VC-240-8	.240	6.09	.33	8.38	.500	12.70	5000	1000	n/a
VC-240-16	.240	6.09	.33	8.38	1.000	25.40	5000	1000	n/a
VC-250-8	.250	6.35	.35	8.89	.500	12.70	5000	1000	n/a
VC-250-16	.250	6.35	.35	8.89	1.000	25.40	5000	1000	100
VC-270-10	.270	6.86	.37	9.39	.625	15.87	5000	1000	n/a
VC-281-8	.281	7.14	.38	9.65	.500	12.70	5000	1000	n/a

† Mini and Micro Paks available in standard color.
 ‡ Minimum order for Micro Paks is 2.

Vinyl Caps (cont.) VC Series

Caplugs No.	Dimensions						Packaging		
	A		*B REF		C		Carton Quantity	Mini Pak † Quantity	Micro Pak ‡ Quantity
	In	mm	In	mm	In	mm			
VC-281-16	.281	7.14	.38	9.65	1.000	25.40	5000	1000	100
VC-290-8	.290	7.37	.40	10.16	.500	12.70	5000	1000	n/a
VC-290-16	.290	7.37	.40	10.16	1.000	25.40	5000	1000	n/a
VC-304-8	.304	7.72	.41	10.41	.500	12.70	5000	1000	n/a
VC-304-16	.304	7.72	.41	10.41	1.000	25.40	4000	800	n/a
VC-312-8	.312	7.93	.42	10.67	.500	12.70	5000	1000	n/a
VC-312-16	.312	7.93	.42	10.67	1.000	25.40	5000	1000	100
VC-312-24	.312	7.93	.43	10.92	1.500	38.10	2500	500	n/a
VC-343-8	.343	8.71	.45	11.43	.500	12.70	5000	1000	n/a
VC-343-16	.343	8.71	.45	11.43	1.000	25.40	2500	500	50
VC-375-8	.375	9.53	.50	12.70	.500	12.70	5000	1000	n/a
VC-375-16	.375	9.53	.50	12.70	1.000	25.40	2500	500	50
VC-406-8	.406	10.31	.53	13.46	.500	12.70	5000	1000	n/a
VC-406-16	.406	10.31	.53	13.46	1.000	25.40	2500	500	50
VC-437-8	.437	11.10	.56	14.22	.500	12.70	5000	1000	n/a
VC-437-16	.437	11.10	.56	14.22	1.000	25.40	2500	500	50
VC-460-8	.460	11.68	.58	14.73	.500	12.70	5000	1000	n/a
VC-460-16	.460	11.68	.58	14.73	1.000	25.40	2500	500	n/a
VC-467-8	.467	11.86	.58	14.73	.500	12.70	5000	1000	n/a
VC-467-16	.467	11.86	.58	14.73	1.000	25.40	2500	500	n/a
VC-490-8	.490	12.45	.61	15.49	.500	12.70	5000	1000	n/a
VC-490-16	.490	12.45	.61	15.49	1.000	25.40	3000	600	n/a
VC-500-8	.500	12.70	.62	15.75	.500	12.70	5000	1000	n/a
VC-500-16	.500	12.70	.62	15.75	1.000	25.40	2500	500	50
VC-531-8	.531	13.49	.65	16.51	.500	12.70	5000	1000	n/a
VC-531-16	.531	13.49	.65	16.51	1.000	25.40	2500	500	n/a
VC-562-8	.562	14.28	.69	17.53	.500	12.70	2500	500	n/a
VC-562-16	.562	14.28	.69	17.53	1.000	25.40	2500	500	n/a
VC-600-8	.600	15.24	.73	18.54	.500	12.70	3000	600	n/a
VC-600-16	.600	15.24	.73	18.54	1.000	25.40	2000	400	n/a
VC-625-8	.625	15.88	.76	19.30	.500	12.70	2500	500	n/a
VC-625-16	.625	15.88	.76	19.30	1.000	25.40	2500	500	50
VC-625-24	.625	15.88	.77	19.56	1.500	38.10	2000	400	n/a
VC-640-8	.640	16.26	.77	19.56	.500	12.70	4000	800	n/a
VC-640-16	.640	16.26	.77	19.56	1.000	25.40	2000	400	n/a
VC-665-8	.665	16.89	.80	20.32	.500	12.70	4000	800	n/a
VC-665-16	.665	16.89	.80	20.32	1.000	25.40	2000	400	n/a
VC-687-8	.687	17.45	.81	20.57	.500	12.70	2500	500	n/a
VC-687-16	.687	17.45	.81	20.57	1.000	25.40	1000	200	n/a
VC-690-8	.690	17.53	.82	20.83	.500	12.70	2500	500	n/a
VC-690-16	.690	17.53	.82	20.83	1.000	25.40	1000	200	n/a
VC-725-8	.725	18.42	.86	21.84	.500	12.70	2500	500	n/a
VC-725-16	.725	18.42	.86	21.84	1.000	25.40	1000	200	n/a
VC-750-8	.750	19.05	.88	22.35	.500	12.70	2500	500	n/a
VC-750-16	.750	19.05	.88	22.35	1.000	25.40	1000	200	25
VC-812-8	.812	20.63	.94	23.88	.500	12.70	2500	500	n/a
VC-812-16	.812	20.63	.94	23.88	1.000	25.40	1000	200	n/a
VC-812-24	.812	20.63	.95	24.13	1.500	38.10	1000	200	n/a
VC-825-8	.825	20.95	.96	24.50	.500	12.70	2500	500	n/a
VC-825-16	.825	20.95	.96	24.50	1.000	25.40	1000	200	n/a
VC-843-8	.843	21.41	.98	24.89	.500	12.70	2500	500	n/a
VC-843-16	.843	21.41	.98	24.89	1.000	25.40	1000	200	n/a
VC-870-8	.870	22.10	1.01	25.65	.500	12.70	1000	200	n/a
VC-870-16	.870	22.10	1.01	25.65	1.000	25.40	1000	200	n/a
VC-875-8	.875	22.23	1.02	25.91	.500	12.70	2500	500	n/a
VC-875-16	.875	22.23	1.02	25.91	1.000	25.40	1000	200	25
VC-875-24	.875	22.23	1.02	25.91	1.500	38.10	1000	200	n/a
VC-937-8	.937	23.80	1.08	27.43	.500	12.70	2500	500	n/a

VCF Series

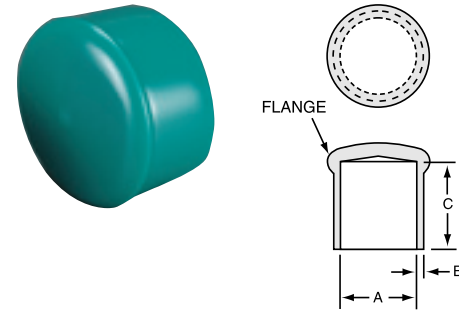
Vinyl Caps with Flanges

VCF Series caps are designed for easy removal with a flange at the closed end large enough to grasp, yet small enough to not interfere with the application.

• Wide range of sizes and colors

Material: Vinyl **Color:** Black
Optional Colors: White, Brown, Orange, Green, Gray, Blue, Red

Note:
 • VCF-125 is available in lengths up to 1.5"
 • VCF-140 through VCF-250 are available in lengths up to 2"
 • VCF-281 through VCF-3000 are available in lengths up to 8"



FLEX 500 Several vinyl series are available in temperature-resistant Flex500®



Vinyl Caps with Flanges (cont.) VCF Series

Caplugs No.	Dimensions						Packaging	
	A		B		C		Carton Quantity	Mini Pak Quantity
	In	mm	In	mm	In	mm		
VCF-125-8	.125	3.17	.035	.89	.500	12.70	5000	1000
VCF-125-16	.125	3.17	.035	.89	1.000	25.40	5000	1000
VCF-140-8	.140	3.55	.040	1.02	.500	12.70	5000	1000
VCF-140-16	.140	3.55	.040	1.02	1.000	25.40	5000	1000
VCF-156-8	.156	3.96	.040	1.02	.500	12.70	5000	1000
VCF-156-16	.156	3.96	.040	1.02	1.000	25.40	5000	1000
VCF-172-8	.172	4.36	.040	1.02	.500	12.70	5000	1000
VCF-172-16	.172	4.36	.040	1.02	1.000	25.40	5000	1000
VCF-187-8	.187	4.74	.040	1.02	.500	12.70	5000	1000
VCF-187-16	.187	4.74	.040	1.02	1.000	25.40	5000	1000
VCF-187-24	.187	4.74	.040	1.02	1.500	38.10	4000	800
VCF-203-8	.203	5.15	.045	1.14	.500	12.70	5000	1000
VCF-203-16	.203	5.15	.045	1.14	1.000	25.40	5000	1000
VCF-218-8	.218	5.53	.045	1.14	.500	12.70	5000	1000
VCF-218-16	.218	5.53	.045	1.14	1.000	25.40	5000	1000
VCF-224-8	.224	5.69	.045	1.14	.500	12.70	5000	1000
VCF-224-16	.224	5.69	.045	1.14	1.000	25.40	5000	1000
VCF-234-8	.234	5.94	.045	1.14	.500	12.70	5000	1000
VCF-234-16	.234	5.94	.045	1.14	1.000	25.40	5000	1000
VCF-250-8	.250	6.35	.050	1.27	.500	12.70	5000	1000
VCF-250-16	.250	6.35	.050	1.27	1.000	25.40	5000	1000
VCF-281-8	.281	7.13	.050	1.27	.500	12.70	5000	1000
VCF-281-16	.281	7.13	.050	1.27	1.000	25.40	5000	1000
VCF-304-8	.304	7.72	.055	1.40	.500	12.70	5000	1000
VCF-304-16	.304	7.72	.055	1.40	1.000	25.40	4000	800
VCF-312-8	.312	7.92	.055	1.40	.500	12.70	5000	1000
VCF-312-16	.312	7.92	.055	1.40	1.000	25.40	5000	1000
VCF-312-24	.312	7.92	.055	1.40	1.500	38.10	5000	1000
VCF-343-8	.343	8.71	.055	1.40	.500	12.70	5000	1000
VCF-343-16	.343	8.71	.055	1.40	1.000	25.40	2500	500
VCF-375-8	.375	9.52	.060	1.52	.500	12.70	5000	1000
VCF-375-16	.375	9.52	.060	1.52	1.000	25.40	2500	500
VCF-406-8	.406	10.31	.060	1.52	.500	12.70	5000	1000
VCF-406-16	.406	10.31	.060	1.52	1.000	25.40	2500	500
VCF-437-8	.437	11.09	.060	1.52	.500	12.70	5000	1000
VCF-437-16	.437	11.09	.060	1.52	1.000	25.40	2500	500
VCF-467-8	.467	11.86	.060	1.52	.500	12.70	5000	1000

Caplugs No.	Dimensions						Packaging	
	A		B		C		Carton Quantity	Mini Pak Quantity
	In	mm	In	mm	In	mm		
VCF-467-16	.467	11.86	.060	1.52	1.000	25.40	2500	500
VCF-500-8	.500	12.70	.060	1.52	.500	12.70	5000	1000
VCF-500-16	.500	12.70	.060	1.52	1.000	25.40	2500	500
VCF-531-8	.531	13.48	.060	1.52	.500	12.70	5000	1000
VCF-531-16	.531	13.48	.060	1.52	1.000	25.40	2500	500
VCF-562-8	.562	14.27	.065	1.65	.500	12.70	2500	500
VCF-562-16	.562	14.27	.065	1.65	1.000	25.40	2500	500
VCF-600-8	.600	15.24	.065	1.65	.500	12.70	3000	600
VCF-600-16	.600	15.24	.065	1.65	1.000	25.40	2000	400
VCF-625-8	.625	15.87	.065	1.65	.500	12.70	2500	500
VCF-625-16	.625	15.87	.065	1.65	1.000	25.40	2500	500
VCF-625-24	.625	15.87	.065	1.65	1.500	38.10	2000	400
VCF-640-8	.640	16.26	.065	1.65	.500	12.70	4000	800
VCF-640-16	.640	16.26	.065	1.65	1.000	25.40	2000	400
VCF-665-8	.665	16.89	.065	1.65	.500	12.70	4000	800
VCF-665-16	.665	16.89	.065	1.65	1.000	25.40	2000	400
VCF-687-8	.687	17.44	.065	1.65	.500	12.70	2500	500
VCF-687-16	.687	17.44	.065	1.65	1.000	25.40	1000	200
VCF-750-8	.750	19.05	.065	1.65	.500	12.70	2500	500
VCF-750-16	.750	19.05	.065	1.65	1.000	25.40	1000	200
VCF-812-8	.812	20.62	.065	1.65	.500	12.70	2500	500
VCF-812-16	.812	20.62	.065	1.65	1.000	25.40	1000	200
VCF-812-24	.812	20.62	.065	1.65	1.500	38.10	1000	200
VCF-843-8	.843	21.41	.070	1.79	.500	12.70	2500	500
VCF-843-16	.843	21.41	.070	1.79	1.000	25.40	1000	200
VCF-875-8	.875	22.22	.070	1.79	.500	12.70	2500	500
VCF-875-16	.875	22.22	.070	1.79	1.000	25.40	1000	200
VCF-875-24	.875	22.22	.070	1.79	1.500	38.10	1000	200
VCF-937-8	.937	23.79	.070	1.79	.500	12.70	2500	500
VCF-937-16	.937	23.79	.070	1.79	1.000	25.40	1000	200
VCF-985-8	.985	25.02	.070	1.79	.500	12.70	2000	400
VCF-985-16	.985	25.02	.070	1.79	1.000	25.40	1000	200
VCF-1000-8	1.000	25.40	.070	1.79	.500	12.70	1000	200
VCF-1000-16	1.000	25.40	.070	1.79	1.000	25.40	1000	200
VCF-1000-24	1.000	25.40	.070	1.79	1.500	38.10	1000	200
VCF-1062-16	1.062	26.97	.070	1.79	1.000	25.40	1200	240
VCF-1125-16	1.125	28.57	.070	1.79	1.000	25.40	1200	240
VCF-1187-16	1.187	30.15	.070	1.79	1.000	25.40	1000	200
VCF-1250-16	1.250	31.75	.070	1.79	1.000	25.40	1000	200
VCF-1250-24	1.250	31.75	.070	1.79	1.500	38.10	500	100
VCF-1312-16	1.312	33.32	.070	1.79	1.000	25.40	800	160
VCF-1312-24	1.312	33.32	.070	1.79	1.500	38.10	600	120
VCF-1375-16	1.375	34.92	.070	1.79	1.000	25.40	800	160
VCF-1375-24	1.375	34.92	.070	1.79	1.500	38.10	400	80
VCF-1500-16	1.500	38.10	.070	1.79	1.000	25.40	750	150
VCF-1500-24	1.500	38.10	.070	1.79	1.500	38.10	300	60
VCF-1625-16	1.625	41.27	.070	1.79	1.000	25.40	750	150
VCF-1687-16	1.687	42.84	.070	1.79	1.000	25.40	700	140
VCF-1750-16	1.750	44.45	.070	1.79	1.000	25.40	700	140
VCF-1875-16	1.875	47.62	.070	1.79	1.000	25.40	600	120
VCF-2000-16	2.000	50.80	.070	1.79	1.000	25.40	600	120
VCF-2000-24	2.000	50.80	.070	1.79	1.500	38.10	300	60
VCF-2125-16	2.125	53.98	.070	1.79	1.000	25.40	500	100
VCF-2250-16	2.250	57.15	.070	1.79	1.000	25.40	500	100
VCF-2250-24	2.250	57.15	.070	1.79	1.500	38.10	300	60
VCF-2375-16	2.375	60.33	.070	1.79	1.000	25.40	400	80
VCF-2375-24	2.375	60.33	.070	1.79	1.500	38.10	300	60
VCF-2500-16	2.500	63.50	.070	1.79	1.000	25.40	400	80
VCF-2500-24	2.500	63.50	.070	1.79	1.500	38.10	300	60
VCF-2625-16	2.625	66.68	.070	1.79	1.000	25.40	400	80
VCF-2625-24	2.625	66.68	.070	1.79	1.500	38.10	200	40
VCF-2750-16	2.750	69.85	.070	1.79	1.000	25.40	300	60
VCF-2750-24	2.750	69.85	.070	1.79	1.500	28.10	200	40
VCF-3000-16	3.000	76.20	.070	1.79	1.000	25.40	250	50
VCF-3000-24	3.000	76.20	.070	1.79	1.500	38.10	250	50

VFC Series Flexible Vinyl Caps with Flat Pull-Tab for Easy Removal

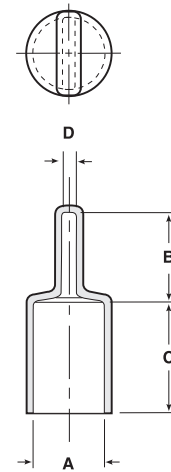


VFC Series vinyl caps feature a long flat tab centered at the top of the closure, which allows for easy removal of the cap.

Material: Vinyl **Color:** Black and Red
Optional Colors: White, Brown, Orange, Green, Gray, Blue, Yellow

Note:
 • VFC-140 through VFC-240 are available in lengths up to 1.5".
 • VFC-302 through VFC-1605 are available in lengths up to 4".

FLEX 500 Several vinyl series are available in temperature-resistant Flex500®



Flexible Vinyl Caps with Flat Pull-Tab for Easy Removal VFC Series

† Mini and Micro Paks available in standard color.
 ‡ Minimum order for Micro Paks is 2.

Caplugs No.	Dimensions								Packaging		
	A		B		C		D		Carton Quantity	Mini Pak † Quantity	Micro Pak ‡ Quantity
	In	mm	In	mm	In	mm	In	mm			
VFC-140-8	.140	3.56	.500	12.70	.500	12.70	.062	1.57	5000	1000	n/a
VFC-140-16	.140	3.56	.500	12.70	1.000	25.40	.062	1.57	5000	1000	n/a
VFC-180-8	.180	4.57	.500	12.70	.500	12.70	.062	1.57	5000	1000	n/a
VFC-180-16	.180	4.57	.500	12.70	1.000	25.40	.062	1.57	5000	1000	100
VFC-207-8	.207	5.25	.625	15.88	.500	12.70	.125	3.18	5000	1000	n/a
VFC-207-16	.207	5.25	.625	15.88	1.000	25.40	.125	3.18	5000	1000	n/a
VFC-240-8	.240	6.09	.625	15.88	.500	12.70	.125	3.18	5000	1000	n/a
VFC-240-16	.240	6.09	.625	15.88	1.000	25.40	.125	3.18	5000	1000	n/a
VFC-302-8	.302	7.67	.625	15.88	.500	12.70	.125	3.18	4000	800	n/a
VFC-302-16	.302	7.67	.625	15.88	1.000	25.40	.125	3.18	4000	800	n/a
VFC-365-8	.365	9.27	.625	15.88	.500	12.70	.125	3.18	5000	1000	n/a
VFC-365-12	.365	9.27	.625	15.88	.750	19.05	.125	3.18	3000	600	n/a
VFC-365-16	.365	9.27	.625	15.88	1.000	25.40	.125	3.18	2500	500	n/a
VFC-396-8	.396	10.05	.625	15.88	.500	12.70	.125	3.18	3000	600	n/a
VFC-396-16	.396	10.05	.625	15.88	1.000	25.40	.125	3.18	3000	600	n/a
VFC-410-8	.410	10.41	.687	17.45	.500	12.70	.500	3.18	3000	600	n/a
VFC-410-16	.410	10.41	.687	17.45	1.000	25.40	1.000	3.18	2000	400	50
VFC-427-8	.427	10.84	.625	15.88	.500	12.70	.125	3.18	3000	600	n/a
VFC-427-16	.427	10.84	.625	15.88	1.000	25.40	.125	3.18	2500	500	50
VFC-470-8	.470	11.93	.625	15.88	.500	12.70	.125	3.18	2000	400	n/a
VFC-470-16	.470	11.93	.625	15.88	1.000	25.40	.125	3.18	2000	400	n/a
VFC-490-8	.490	12.44	.625	15.88	.500	12.70	.125	3.18	2500	500	n/a
VFC-490-16	.490	12.44	.625	15.88	1.000	25.40	.125	3.18	1500	300	n/a
VFC-521-8	.521	13.23	.625	15.88	.500	12.70	.125	3.18	2000	400	n/a
VFC-521-16	.521	13.23	.625	15.88	1.000	25.40	.125	3.18	1500	300	50
VFC-552-8	.552	14.02	.687	17.45	.500	12.70	.125	3.18	3000	600	n/a
VFC-552-12	.552	14.02	.687	17.45	.750	19.05	.125	3.18	2000	400	n/a
VFC-552-16	.552	14.02	.687	17.45	1.000	25.40	.125	3.18	1500	300	n/a
VFC-590-8	.590	14.98	.625	15.88	.500	12.70	.125	3.18	1500	300	n/a
VFC-590-16	.590	14.98	.625	15.88	1.000	25.40	.125	3.18	1500	300	50
VFC-615-8	.615	15.62	.687	17.45	.500	12.70	.125	3.18	2000	400	n/a
VFC-615-16	.615	15.62	.687	17.45	1.000	25.40	.125	3.18	2000	400	n/a
VFC-677-8	.677	17.19	.687	17.45	.500	12.70	.125	3.18	1000	200	n/a
VFC-677-16	.677	17.19	.687	17.45	1.000	25.40	.125	3.18	1000	200	25
VFC-735-8	.735	18.66	.812	20.63	.500	12.70	.187	4.75	1000	200	n/a
VFC-735-12	.735	18.66	.812	20.63	.750	19.05	.187	4.75	1250	250	n/a
VFC-735-16	.735	18.66	.812	20.63	1.000	25.40	.187	4.75	1000	200	n/a
VFC-797-8	.797	20.24	.812	20.63	.500	12.70	.187	4.75	900	180	n/a
VFC-797-16	.797	20.24	.812	20.63	1.000	25.40	.187	4.75	900	180	25
VFC-865-8	.865	21.97	.843	21.41	.500	12.70	.187	4.75	1000	200	n/a
VFC-865-16	.865	21.97	.843	21.41	1.000	25.40	.187	4.75	800	160	n/a
VFC-990-8	.990	25.14	.875	22.23	.500	12.70	.187	4.75	600	120	n/a
VFC-990-16	.990	25.14	.875	22.23	1.000	25.40	.187	4.75	600	120	25
VFC-1230-16	1.230	31.24	1.125	28.58	1.000	25.40	.187	4.75	500	100	n/a
VFC-1230-24	1.230	31.24	1.125	28.58	1.500	38.10	.187	4.75	500	100	n/a
VFC-1605-16	1.605	40.76	1.250	31.75	1.000	25.40	2.500	6.35	400	80	n/a
VFC-1605-24	1.605	40.76	1.250	31.75	1.500	38.10	2.500	6.35	400	80	n/a

VFE Series

Vinyl Caps with Flat Ergonomic Pull-Tab

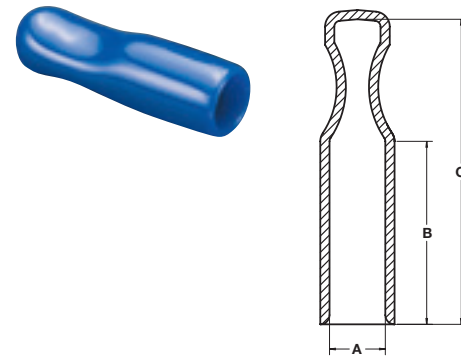


VFE Series vinyl caps with a flat ergonomic pull-tab offer an easier gripping surface and require less pull for removal.

Material: Vinyl **Color:** Black, Red
Optional Colors: White, Brown, Orange, Green, Gray, Blue, Yellow

Note: The VFE Series is available in all sizes shown below under the VFT Series.

FLEX 500 Several vinyl series are available in temperature-resistant Flex500®



Vinyl Caps with Flat Ergonomic Pull-Tab VFE Series

Caplugs No.	Dimensions						Packaging	
	A		B		C		Carton Quantity	Mini Pak Quantity
	In	mm	In	mm	In	mm		
VFE-312-8	.312	7.92	.500	12.70	1.245	31.62	5000	1000
VFE-320-10	.320	8.13	.625	15.88	1.325	33.66	8000	1000
VFE-375-8	.375	9.53	.500	12.70	1.425	36.20	5000	1000
VFE-406-8	.406	10.31	.500	12.70	1.150	29.21	5000	1000
VFE-420-10	.420	10.67	.625	15.88	1.365	34.67	5000	1000
VFE-437-8	.437	11.10	.500	12.70	1.255	31.88	5000	1000
VFE-450-6	.450	11.43	.375	9.53	1.275	32.39	8000	1000
VFE-470-8	.470	11.94	.500	12.70	1.280	32.51	5000	1000
VFE-500-8	.500	12.70	.500	12.70	1.425	36.20	5000	1000
VFE-530-10	.530	13.46	.625	15.88	1.125	28.58	4000	800
VFE-595-10	.595	15.11	.625	15.88	1.525	38.73	2500	500
VFE-717-16	.717	18.21	.625	15.88	2.130	54.10	2000	400
VFE-750-12	.750	19.05	.750	19.05	1.635	41.53	3000	600
VFE-875-12	.875	22.23	.750	19.05	1.940	49.28	1500	300
VFE-950-14	.950	24.13	.625	15.88	2.140	54.36	1250	250
VFE-1000-10	1.000	25.40	.625	15.88	1.600	40.64	2500	500
VFE-1125-12	1.125	28.58	.750	19.05	1.775	45.09	2000	400

VFT Series

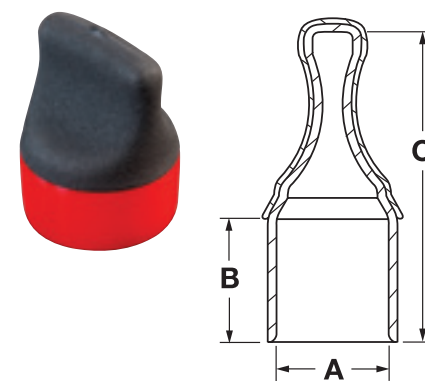
Tapered Vinyl Caps with Flat Ergonomic Pull-Tab



VFT Series tapered vinyl caps with flat ergonomic pull-tab feature the standard vinyl part in a second vinyl material that offers a textured finish for an even greater degree of control. The second coat of vinyl grips to hands or gloves 80% better than traditional pull tabs.

• Wide range of sizes

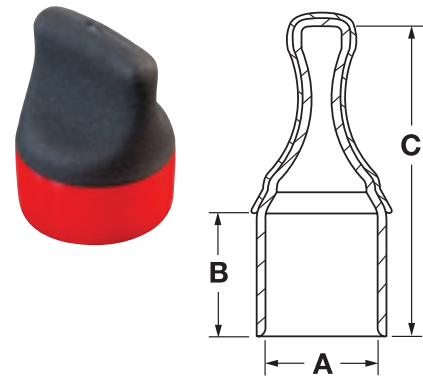
Material: Vinyl **Color:** Red with Black Texture
Optional Colors: White, Brown, Orange, Green, Gray, Blue, Yellow, Black with Black Texture. Textured second coat is only available in black.



Tapered Vinyl Caps with Flat Ergonomic Pull-Tab VFT Series

Caplugs No.	Dimensions						Packaging	
	A		B		C		Carton Quantity	Mini Pak Quantity
	In	mm	In	mm	In	mm		
VFT-187-12	.187	4.75	.750	19.05	1.228	31.19	10000	2000
VFT-218-12	.218	5.54	.750	19.05	1.254	31.85	5000	1000
VFT-240-12	.240	6.10	.750	19.05	1.270	32.26	5000	1000
VFT-250-12	.250	6.35	.750	19.05	1.278	32.46	5000	1000
VFT-312-8	.312	7.92	.500	12.70	1.245	31.62	5000	1000
VFT-320-10	.320	8.13	.625	15.88	1.325	33.66	8000	1000
VFT-365-12	.365	9.27	.750	19.05	1.625	41.28	4000	800
VFT-375-8	.375	9.53	.500	12.70	1.425	36.20	5000	1000
VFT-386-12	.386	9.80	.750	19.05	1.625	41.28	3000	600
VFT-406-8	.406	10.31	.500	12.70	1.150	29.21	4000	800
VFT-420-10	.420	10.67	.625	15.88	1.365	34.67	5000	1000
VFT-427-12	.427	10.85	.750	19.05	1.625	41.28	3000	600
VFT-437-8	.437	11.10	.500	12.70	1.255	31.88	5000	1000
VFT-450-6	.450	11.43	.375	9.53	1.275	32.39	8000	1000
VFT-460-12	.460	11.68	.750	19.05	1.625	41.28	3000	600
VFT-470-8	.470	11.94	.500	12.70	1.280	32.51	3000	600
VFT-490-12	.490	12.45	.750	19.05	1.625	41.28	2500	500
VFT-500-8	.500	12.70	.500	12.70	1.425	36.20	5000	1000
VFT-521-12	.521	13.23	.750	19.05	1.750	44.45	2000	400
VFT-530-10	.530	13.46	.625	15.88	1.125	28.58	4000	800
VFT-552-12	.552	14.02	.750	19.05	1.750	44.45	2000	400
VFT-562-12	.562	14.27	.750	19.05	1.813	46.05	2000	400
VFT-595-10	.595	15.11	.625	15.88	1.525	38.74	2500	500
VFT-615-12	.615	15.62	.750	19.05	1.813	46.05	1000	200
VFT-625-12	.625	15.88	.750	19.05	1.813	46.05	1500	300
VFT-656-12	.656	16.66	.750	19.05	1.813	46.05	1500	300
VFT-677-12	.677	17.20	.750	19.05	1.813	46.05	1500	300
VFT-687-12	.687	17.45	.750	19.05	1.813	46.05	1500	300
VFT-695-12	.695	17.65	.750	19.05	1.813	46.05	1500	300
VFT-703-12	.703	17.86	.750	19.05	1.813	46.05	1000	200
VFT-717-16	.717	18.21	1.000	25.40	2.130	54.10	1000	200

VFT Series Tapered Vinyl Caps with Flat Ergonomic Pull-Tab (cont.)



Tapered Vinyl Caps with Flat Ergonomic Pull-Tab (cont.) VFT Series

Caplugs No.	Dimensions						Packaging	
	A		B		C		Carton Quantity	Mini Pak Quantity
	In	mm	In	mm	In	mm		
VFT 735-12	.735	18.67	.750	19.05	1.813	46.05	1000	200
VFT 740-12	.740	18.80	.750	19.05	1.813	46.05	1000	200
VFT 750-12	.750	19.05	.750	19.05	1.635	41.53	3000	600
VFT 797-12	.797	20.24	.750	19.05	1.813	46.05	1000	200
VFT 812-12	.812	20.62	.750	19.05	1.938	49.23	1000	200
VFT 835-12	.835	21.21	.750	19.05	1.938	49.23	1000	200
VFT 843-12	.843	21.41	.750	19.05	1.938	49.23	1000	200
VFT 865-12	.865	21.97	.750	19.05	1.938	49.23	1000	200
VFT 875-12	.875	22.23	.750	19.05	1.938	49.23	1000	200
VFT 950-14	.950	24.13	.875	22.23	2.140	54.36	750	150
VFT 990-12	.990	25.15	.750	19.05	2.062	52.37	900	180
VFT-1000-10	1.000	25.40	.625	15.88	1.600	40.64	2500	500
VFT 1048-12	1.048	26.62	.750	19.05	2.125	53.98	750	150
VFT 1062-12	1.062	26.97	.750	19.05	2.125	53.98	700	140
VFT-1125-12	1.125	28.58	.750	19.05	1.775	45.09	2000	400
VFT 1240-12	1.240	31.50	.750	19.05	2.125	53.98	600	120
VFT 1250-12	1.250	31.75	.750	19.05	2.125	53.98	600	120
VFT 1500-12	1.500	38.10	.750	19.05	2.125	53.98	500	100
VFT 1625-12	1.625	41.28	.750	19.05	2.125	53.98	400	80

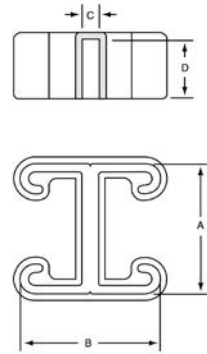
VIF Series Vinyl "I" Metal Frame Caps



VIF Series vinyl "I" metal frame caps feature a unique design that offers exceptional protection for metal "I" shaped frames. The caps greatly reduce the risk of injury from sharp metal edges.

Material: Vinyl **Color:** Green
Optional Colors: White, Black, Brown, Orange, Red, Gray, Blue, Yellow

FLEX 500 Several vinyl series are available in temperature-resistant Flex500®



Vinyl "I" Metal Frame Caps VIF Series

Caplugs No.	Dimensions								Packaging	
	A		B		C		D		Carton Quantity	Mini Pak Quantity
	In	mm	In	mm	In	mm	In	mm		
VIF-1625x1625x14-12	1.625	41.27	1.625	41.27	.080	2.03	.750	19.05	300	60
VIF-1625x1750x12-12	1.625	41.27	1.750	44.45	.080	2.03	.750	19.05	300	60
VIF-1625x2750x12-12	1.625	41.27	2.750	69.85	.080	2.03	.750	19.05	300	60
VIF-1625x3250x12-12	1.625	41.27	3.250	82.55	.080	2.03	.750	19.05	200	40

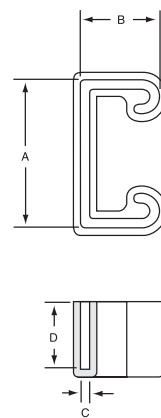
VMF Series Vinyl "U" Metal Frame Caps



VMF Series vinyl "U" metal frame caps feature a unique design that offers exceptional protection for metal "U" shaped frames. The caps greatly reduce the risk of injury from sharp metal edges.

Material: Vinyl **Color:** Green
Optional Colors: White, Black, Brown, Orange, Red, Gray, Blue, Yellow

FLEX 500 Several vinyl series are available in temperature-resistant Flex500®



Vinyl "U" Metal Frame Caps VMF Series

Caplugs No.	Dimensions								Packaging	
	A		B		C		D		Carton Quantity	Mini Pak Quantity
	In	mm	In	mm	In	mm	In	mm		
VMF-1250x750x14-12	1.250	31.75	.750	19.05	.080	2.03	.750	19.05	700	140
VMF-1250x1250x14-12	1.250	31.75	1.250	31.75	.080	2.03	.750	19.05	500	100
VMF-1625x812x14-12	1.625	41.27	.812	20.62	.080	2.03	.750	19.05	600	120
VMF-1625x875x12-12	1.625	41.27	.875	22.22	.080	2.03	.750	19.05	600	120
VMF-1625x1375x12-12	1.625	41.27	1.375	34.92	.080	2.03	.750	19.05	500	100
VMF-1625x1625x12-12	1.625	41.27	1.625	41.27	.080	2.03	.750	19.05	400	80
VMF-1625x2437x12-12	1.625	41.27	2.430	61.72	.080	2.03	.750	19.05	300	60
VMF-1625x3250x12-12	1.625	41.27	3.250	82.55	.080	2.03	.750	19.05	300	60

VRF Series

Vinyl Rectangular Caps and Grips (flat end)



VRF Series vinyl rectangular finishing caps and grips (flat end) slip on quickly and maintain a snug fit. The caps have many applications including handle grips, paint shields, end caps and electronics covers.

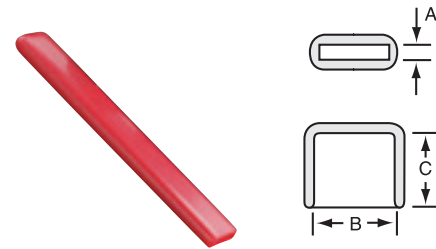
- Printing is available
- New sizes are always being added

Material: Vinyl **Color:** Black
Optional Colors: White, Brown, Orange, Red, Green, Gray, Blue, Yellow

Note:

- VRF-040x250 through VRF-062x500 are available in lengths up to 1".
- VRF-062x875 through VRF-062x3000 are available in lengths up to 3-1/2".
- VRF-080x375 through VRF-3000x4000 are available in lengths up to 8".
- Lengths (C Dimension) are available in 1/16" (1.6mm) increments. Length tolerance is ±1/16" (1.6mm).

FLEX 500 Several vinyl series are available in temperature-resistant Flex500®



Note: Most VRF parts can be pad printed with your company logo or product name in a variety of colors.

Vinyl Rectangular Caps and Grips (flat end) (cont.) VRF Series

** Radius edges

Caplugs No.	Dimensions						Packaging	
	A		B		C		Carton Quantity	Mini Pak Quantity
	In	mm	In	mm	In	mm		
VRF-250x500-16	.250	6.35	.500	12.70	1.000	25.40	3000	600
VRF-250x562-16	.250	6.35	.562	14.27	1.000	25.40	2500	500
VRF-250x625-16	.250	6.35	.625	15.87	1.000	25.40	2500	500
VRF-250x750-16	.250	6.35	.750	19.05	1.000	25.40	2000	400
VRF-250x875-16	.250	6.35	.875	22.22	1.000	25.40	2000	400
VRF-250x1000-16	.250	6.35	1.000	25.40	1.000	25.40	1500	300
VRF-250x1125-16	.250	6.35	1.125	28.58	1.000	25.40	1500	300
VRF-250x1250-16	.250	6.35	1.250	31.75	1.000	25.40	1000	200
VRF-250x1312-16	.250	6.35	1.312	33.32	1.000	25.40	1000	200
VRF-250x1500-16	.250	6.35	1.500	38.10	1.000	25.40	1000	200
VRF-250x1750-16	.250	6.35	1.750	44.45	1.000	25.40	1000	200
VRF-250x2000-16	.250	6.35	2.000	50.80	1.000	25.40	900	180
VRF-290x344-8	.290	7.37	.344	8.74	.500	12.70	5000	1000
VRF-290x344-16	.290	7.37	.344	8.74	1.000	25.40	3000	600
VRF-312x1250-16	.312	7.92	1.250	31.75	1.000	25.40	1000	200
VRF-312x1500-16	.312	7.92	1.500	38.10	1.000	25.40	1000	200
VRF-350x2900-16	.350	8.89	2.900	73.66	1.000	25.40	600	120
VRF-375x625-16	.375	9.52	.625	15.87	1.000	25.40	2000	400
VRF-375x1000-16	.375	9.52	1.000	25.40	1.000	25.40	1500	300
VRF-375x1125-16	.375	9.52	1.125	28.12	1.000	25.40	1000	200
VRF-375x1250-16	.375	9.52	1.250	31.75	1.000	25.40	1000	200
VRF-375x1500-16	.375	9.52	1.500	38.10	1.000	25.40	1000	200
VRF-375x7875-16	.375	9.52	7.875	200.03	1.000	25.40	250	50
VRF-500x625-16	.500	12.70	.625	15.87	1.000	25.40	1500	300
VRF-500x750-16	.500	12.70	.750	19.05	1.000	25.40	1500	300
VRF-500x1250-16	.500	12.70	1.250	31.75	1.000	25.40	1000	200
VRF-500x1500-16	.500	12.70	1.500	38.10	1.000	25.40	1000	200
VRF-500x2000-16	.500	12.70	2.000	50.80	1.000	25.40	800	160
VRF-500x3375-16	.500	12.70	3.375	85.72	1.000	25.40	500	100
VRF-625x1750-16	.625	15.87	1.750	44.45	1.000	25.40	800	160
VRF-625x2000-16	.625	15.87	2.000	50.80	1.000	25.40	1000	200
VRF-625x6500-16	.625	15.87	6.500	165.10	1.000	25.40	300	60
VRF-750x1000-16	.750	19.05	1.000	25.40	1.000	25.40	1000	200
VRF-750x1125-16	.750	19.05	1.125	28.57	1.000	25.40	1000	200
VRF-750x1500-16	.750	19.05	1.500	38.10	1.000	25.40	1500	300
VRF-750x2500-16	.750	19.05	2.500	63.50	1.000	25.40	500	100
VRF-750x3125-20	.750	19.05	3.125	79.38	1.250	31.80	500	100
VRF-750x4000-20	.750	19.05	4.000	101.60	1.250	31.80	250	50
VRF-825x1900-16	.825	20.19	1.900	48.26	1.000	25.40	1000	200
VRF-960x3350-16	.960	24.38	3.350	85.09	1.000	25.40	250	50
VRF-1000x1500-16	1.000	25.40	1.500	38.10	1.000	25.40	1000	200
VRF-1000x2000-16	1.000	25.40	2.000	50.80	1.000	25.40	600	120
VRF-1062x2500-16	1.062	26.97	2.500	63.50	1.000	25.40	500	100
VRF-1500-2400-16	1.500	38.10	2.400	60.96	1.000	25.40	250	50
VRF-1500x2750-16	1.500	38.10	2.750	69.85	1.000	25.40	400	80
VRF-1500x3000-16**	1.500	38.10	3.000	76.20	1.000	25.40	400	80
VRF-1500x3125-16	1.500	38.10	3.125	79.38	1.000	25.40	250	50
VRF-2000x3000-16	2.000	50.80	3.000	76.20	1.000	25.40	300	60
VRF-2000x3500-16	2.000	50.80	3.500	88.90	1.000	25.40	250	50
VRF-2000x4000-16	2.000	50.80	4.000	101.60	1.000	25.40	250	50
VRF-2000x6000-24	2.000	50.80	6.000	152.40	1.500	38.10	150	30
VRF-2500x3000-16	2.500	63.50	3.000	76.20	1.000	25.40	250	50
VRF-3000x4000-24**	3.000	76.20	4.000	101.60	1.500	38.10	150	30

VRR Series

Vinyl Rectangular Caps and Grips (round end)



VRR Series vinyl rectangular finishing caps and grips (round end) slip on quickly and maintain a snug fit. The caps have many applications including handle grips, paint shields, end caps and electronics covers.

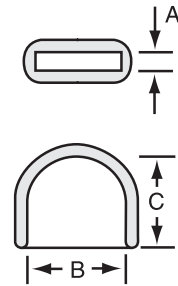
- Printing is available
- New sizes are always being added

Material: Vinyl **Color:** Black
Optional Color: White, Brown, Orange, Red, Green, Gray, Blue, Yellow

Note:

- VRR-062x312 through VRR-062x1188 are available in lengths up to 4".
- VRR-090x875 through VRR-500x1000 are available in lengths up to 7-1/2".
- Lengths (C Dimension) are available in 1/16" (1.6mm) increments. Length tolerance is ±1/16" (1.6mm).

FLEX 500 Several vinyl series are available in temperature-resistant Flex500®



Note: Most VRR parts can be pad printed with your company logo or product name in a variety of colors.

Vinyl Rectangular Caps and Grips (round end) VRR Series

Caplugs No.	Dimensions						Packaging	
	A		B		C		Carton Quantity	Mini Pak Quantity
	In	mm	In	mm	In	mm		
VRR-062x312-16	.062	1.57	.312	7.92	1.000	25.40	5000	1000
VRR-062x375-16	.062	1.57	.375	9.52	1.000	25.40	5000	1000
VRR-062x437-16	.062	1.57	.437	11.09	1.000	25.40	5000	1000
VRR-062x468-16	.062	1.57	.468	11.88	1.000	25.40	5000	1000
VRR-062x500-16	.062	1.57	.500	12.70	1.000	25.40	4000	800
VRR-062x625-16	.062	1.57	.625	15.87	1.000	25.40	4000	800
VRR-062x750-16	.062	1.57	.750	19.05	1.000	25.40	3000	600
VRR-062x875-16	.062	1.57	.875	22.22	1.000	25.40	2500	500
VRR-062x1000-16	.062	1.57	1.000	25.40	1.000	25.40	1500	300
VRR-062x1188-16	.062	1.57	1.188	30.17	1.000	25.40	1500	300
VRR-090x875-16	.090	2.28	.875	22.22	1.000	25.40	2000	400
VRR-125x375-16	.125	3.17	.375	9.52	1.000	25.40	5000	1000
VRR-125x500-16	.125	3.17	.500	12.70	1.000	25.40	4000	800
VRR-125x625-16	.125	3.17	.625	15.87	1.000	25.40	3000	600
VRR-125x750-16	.125	3.17	.750	19.05	1.000	25.40	2000	400
VRR-125x875-16	.125	3.17	.875	22.22	1.000	25.40	2000	400
VRR-125x1000-16	.125	3.17	1.000	25.40	1.000	25.40	2000	400
VRR-125x1250-16	.125	3.17	1.250	31.75	1.000	25.40	1500	300
VRR-160x1250-16	.160	4.06	1.250	31.75	1.000	25.40	1500	300
VRR-187x375-16	.187	4.74	.375	9.52	1.000	25.40	4000	800
VRR-187x625-16	.187	4.74	.625	15.87	1.000	25.40	3000	600
VRR-187x1000-16	.187	4.74	1.000	25.40	1.000	25.40	1500	300
VRR-187x1500-16	.187	4.74	1.500	38.10	1.000	25.40	1000	200
VRR-187x2000-16	.187	4.74	2.000	50.80	1.000	25.40	1000	200
VRR-250x375-16	.250	6.35	.375	9.52	1.000	25.40	4000	800
VRR-250x500-16	.250	6.35	.500	12.70	1.000	25.40	3000	600
VRR-250x750-16	.250	6.35	.750	19.12	1.000	25.40	2000	400
VRR-250x1000-16	.250	6.35	1.000	25.40	1.000	25.40	1500	300
VRR-250x1250-16	.250	6.35	1.250	31.75	1.000	25.40	1000	200
VRR-312x625-16	.312	7.92	.625	15.87	1.000	25.40	2000	400
VRR-312x1781-16	.312	7.92	1.781	45.23	1.000	25.40	1000	200
VRR-375-500-16	.375	9.52	.500	12.70	1.000	25.40	2500	500
VRR-375x875-16	.375	9.52	.875	22.22	1.000	25.40	1500	300
VRR-500x1000-16	.500	12.70	1.000	25.40	1.000	25.40	1000	200
VRR-500x1500-16	.500	12.70	1.500	38.10	1.000	25.40	1000	200
VRR-1170X1340-16	1.170	29.72	1.340	34.04	1.000	25.40	1000	200

VS Series

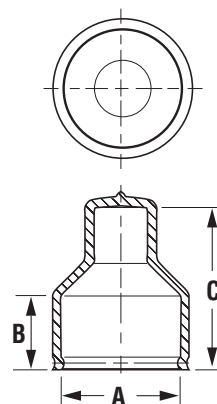
Vinyl Squeeze Pull Caps



VS Series vinyl squeeze pull caps are used extensively in the aircraft industry to protect UNJF threads. The removal process is made easier by squeezing the uniquely engineered pull-tab, which opens the bottom of the cap slightly.

Material: Vinyl **Color:** Green

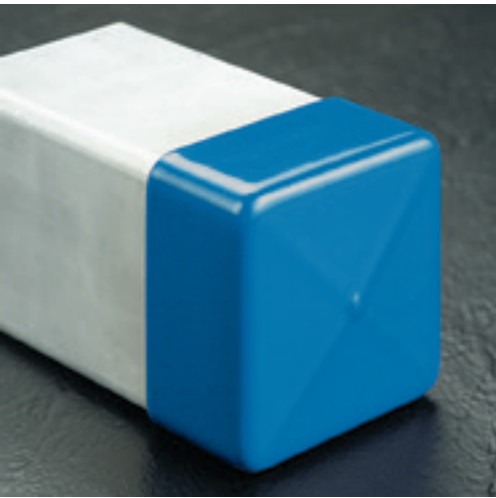
FLEX 500 Several vinyl series are available in temperature-resistant Flex500®



Vinyl Squeeze Pull Caps VS Series

Caplugs No.	To Cap Thread Size	Dimensions						Packaging	
		A		B		C		Carton Quantity	Mini Pak Quantity
		In	mm	In	mm	In	mm		
VS-875	7/8	.857	21.77	.60	15.24	1.26	32.00	1750	350
VS-1063	1-1/16	1.041	26.44	.64	16.26	1.38	35.05	1250	250
VS-1313	1-5/16	1.307	33.20	.70	17.78	1.61	40.89	750	150
VS-1625	1-5/8	1.591	40.41	.76	19.30	1.63	41.40	600	120

VSC Series Vinyl Square Caps



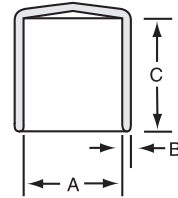
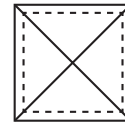
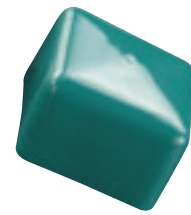
VSC Series vinyl square caps are designed for use with square tubing. The caps are strong and tough, yet flexible enough to stretch out for a perfect fit.

- Available in a wide range of sizes
- Excellent finishing parts

Material: Vinyl **Color:** Black
Optional Colors: White, Brown, Orange, Green, Gray, Blue, Yellow, Red

- Note:**
- VSC-250 through VSC-750 are available in lengths up to 4".
 - VSC-1000 through VSC-4000 are available in lengths up to 8".

FLEX 500 Several vinyl series are available in temperature-resistant Flex500®



Vinyl Square Caps VSC Series

** Radius edges

Caplugs No.	Dimensions						Packaging	
	A		B		C		Carton Quantity	Mini Pak Quantity
	In	mm	In	mm	In	mm		
VSC-250-8	.250	6.35	.065	1.65	.500	12.70	5000	1000
VSC-250-16	.250	6.35	.065	1.65	1.000	25.40	5000	1000
VSC-312-8	.312	7.92	.060	1.52	.500	12.70	5000	1000
VSC-312-16	.312	7.92	.060	1.52	1.000	25.40	5000	1000
VSC-375-8	.375	9.53	.060	1.52	.500	12.70	2500	500
VSC-375-16	.375	9.53	.060	1.52	1.000	25.40	2500	500
VSC-437-8	.437	11.10	.060	1.52	.500	12.70	5000	1000
VSC-437-16	.437	11.10	.060	1.52	1.000	25.40	5000	1000
VSC-500-8	.500	12.70	.065	1.65	.500	12.70	3000	600
VSC-500-16	.500	12.70	.065	1.65	1.000	25.40	2000	400
VSC-625-8	.625	15.87	.065	1.65	.500	12.70	2500	500
VSC-625-16	.625	15.87	.065	1.65	1.000	25.40	1500	300
VSC-750-8	.750	19.05	.065	1.65	.500	12.70	2000	400
VSC-750-16	.750	19.05	.065	1.65	1.000	25.40	1000	200
VSC-875-14	.870	22.22	.060	1.65	.870	22.22	1000	200
VSC-1000-8	1.000	25.40	.065	1.65	.500	12.70	1500	300
VSC-1000-16	1.000	25.40	.065	1.65	1.000	25.40	900	180
VSC-1250-8	1.250	31.75	.065	1.65	.500	12.70	1000	200
VSC-1250-16	1.250	31.75	.065	1.65	1.000	25.40	700	140
VSC-1500-8	1.500	38.10	.065	1.65	.500	12.70	900	180
VSC-1500-16	1.500	38.10	.065	1.65	1.000	25.40	600	120
VSC-1625-8**	1.625	41.28	.070	1.78	.500	12.70	1000	200
VSC-1625-16**	1.625	41.28	.070	1.78	1.000	25.40	500	100
VSC-1750-8	1.750	44.45	.065	1.65	.500	12.70	700	140
VSC-1750-16	1.750	44.45	.065	1.65	1.000	25.40	500	100
VSC-1875-8	1.875	47.62	.065	1.65	.500	12.70	600	120
VSC-1875-16	1.875	47.62	.065	1.65	1.000	25.40	400	80
VSC-2000-8	2.000	50.80	.065	1.65	.500	12.70	600	120
VSC-2000-16	2.000	50.80	.065	1.65	1.000	25.40	400	80
VSC-2500-16	2.500	63.50	.065	1.65	1.000	25.40	300	60
VSC-3000-16	3.000	76.20	.065	1.65	1.000	25.40	200	40
VSC-3500-16	3.500	88.90	.065	1.65	1.000	25.40	200	40
VSC-4000-16	4.000	101.60	.065	1.65	1.000	25.40	100	20
VSC-8000-24	8.000	203.20	.085	2.16	1.500	38.10	10	n/a

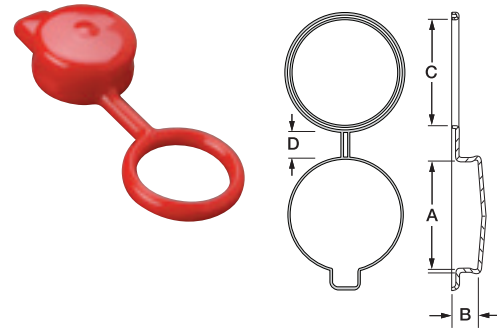
VTC Series Vinyl Tethered Caps



VTC Series vinyl tethered caps are ideal for applications that need removable and reusable protection. The soft vinyl keeps fittings protected while the tethered design allows the cap to remain on the application when not actively being used.

- Can be reused
- Easy to use

Material: Vinyl **Color:** Black
Optional Colors: White, Brown, Orange, Green, Gray, Blue, Yellow, Red



Vinyl Tethered Caps VTC Series

Caplugs No.	Dimensions								Packaging	
	A		B		C		D		Carton Quantity	Mini Pak Quantity
	In	mm	In	mm	In	mm	In	mm		
VTC-437-8	.437	11.10	.500	12.70	.468	11.88	.500	12.70	3000	600
VTC-500-8	.500	12.70	.500	12.70	.463	11.76	.500	12.70	3500	700
VTC-562-8	.562	14.27	.500	12.70	.593	15.06	.500	12.70	3000	600
VTC-625-8	.625	15.87	.500	12.70	.588	14.93	.500	12.70	3000	600
VTC-725-8	.725	18.41	.500	12.70	.712	18.08	.500	12.70	2500	500
VTC-750-8	.750	19.05	.500	12.70	.781	19.83	.500	12.70	2000	400
VTC-812-8	.812	20.62	.500	12.70	.843	21.41	.500	12.70	2000	400
VTC-812-16	.812	20.62	1.000	25.40	.843	21.40	.500	12.70	1500	300
VTC-850-8	.850	21.58	.500	12.70	.813	20.64	.500	12.70	2000	400
VTC-875-8	.875	22.22	.500	12.70	.838	21.28	.500	12.70	2000	400
VTC-875-16	.875	22.22	1.000	25.40	.838	21.28	.500	12.70	1500	300
VTC-937-8	.937	23.80	.500	12.70	.968	24.59	.500	12.70	2000	400
VTC-937-16	.937	23.80	1.000	25.40	.968	24.58	.750	19.05	1250	250
VTC-1000-16	1.000	25.40	1.000	25.40	1.026	26.05	.750	19.05	1000	200
VTC-1062-8	1.062	26.96	.500	12.70	1.125	28.56	.750	19.05	1500	300
VTC-1103-16	1.103	28.01	1.000	25.40	1.129	28.67	.750	19.05	1000	200
VTC-1125-8	1.125	28.58	.500	12.70	1.188	30.18	.750	19.05	1000	200
VTC-1125-16	1.125	28.56	1.000	25.40	1.188	30.16	.750	19.05	1250	250
VTC-1250-8	1.250	31.75	.500	12.70	1.313	33.35	.750	19.05	1000	200
VTC-1250-16	1.250	31.74	1.000	25.40	1.313	33.34	.750	19.05	1000	200
VTC-1312-16	1.312	33.31	1.000	25.40	1.318	33.46	.750	19.05	1000	200
VTC-1375-8	1.375	34.91	.500	12.70	1.438	36.51	.750	19.05	900	180
VTC-1437-8	1.437	36.49	.500	12.70	1.500	38.09	.750	19.05	800	160
VTC-1500-16	1.500	38.09	1.000	25.40	1.526	38.75	.750	19.05	800	160
VTC-1687-8	1.687	42.83	.500	12.70	1.750	44.43	.750	19.05	700	140
VTC-1750-12	1.750	44.43	.750	19.05	1.693	42.99	.750	19.05	700	140
VTC-1875-12	1.875	47.61	.750	19.05	1.938	49.21	.750	19.05	600	120
VTC-2000-12	2.000	50.78	.750	19.05	2.063	52.38	.750	19.05	600	120
VTC-2125-12	2.125	53.98	.750	19.05	2.068	52.53	.750	19.05	500	100
VTC-2375-12	2.375	60.30	.750	19.05	2.438	61.90	.750	19.05	500	100
VTC-2625-12	2.625	66.65	.750	19.05	2.688	68.25	.750	19.05	400	80
VTC-2750-12	2.750	69.82	.750	19.05	2.813	71.42	.750	19.05	400	80
VTC-2875-12	2.875	73.00	.750	19.05	2.938	74.60	.750	19.05	300	60
VTC-3125-12	3.125	79.34	.750	19.05	3.188	80.94	.750	19.05	300	60
VTC-3625-12	3.625	92.04	.750	19.05	3.688	93.64	.750	19.05	250	50

VVC Series Vent-A-Cap™ Vinyl Caps

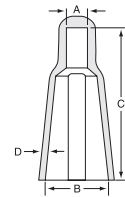


VVC Series Vent-A-Cap™ vinyl caps consist of several styles of caps used to protect the ends of tubing connectors and instrument tips. The venting allows for air flow during high-pressure processes ensuring the caps remain secure and provides easy removal. The caps are most commonly used in a range of medical applications.

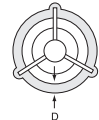
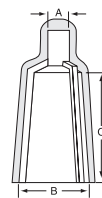
- Series 20, Series 22 and Series 26 are tapered to fit multiple sizes of tubing and instruments
- Series 29 is offered in straight wall

Material: Vinyl **Color:** Black
Optional Colors: White, Brown, Orange, Green, Gray, Blue, Yellow, Red

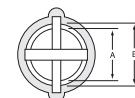
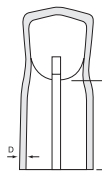
FLEX 500 Several vinyl series are available in temperature-resistant Flex500®



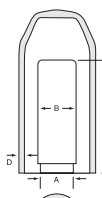
20 Series



22 Series



26 Series



29 Series

Note: VVC Series is available in standard catalog length only.

Vented Vinyl Caps VVC Series

Caplugs No.	Tube Size	Dimensions								Packaging	
		A		B		C		D		Carton Quantity	Mini Pak Quantity
		In	mm	In	mm	In	mm	In	mm		

20 Series

VVC-2071	1/4 x 1/16	.200	5.08	.425	10.80	1.600	40.64	.055	1.40	5000	1000
VVC-2072	1/4 x 3/32	.250	6.35	.500	12.70	1.600	40.64	.055	1.40	5000	1000
VVC-2073	3/8 x 1/16	.250	6.35	.525	13.34	1.600	40.64	.055	1.40	5000	1000
VVC-2074	3/8 x 3/32	.250	6.35	.610	15.49	1.600	40.64	.055	1.40	5000	1000
VVC-2075	1/2 x 1/16	.250	6.35	.650	16.51	1.600	40.64	.055	1.40	5000	1000
VVC-2076	1/2 x 3/32	.275	6.99	.735	18.67	1.600	40.64	.055	1.40	4000	800

22 Series

VVC-2220	1/8 x 1/32	.080	2.03	.190	4.83	.430	10.92	.045	1.14	10000	1000
VVC-2221	1/8 x 1/16	.156	3.96	.310	7.87	1.075	27.31	.055	1.40	5000	1000
VVC-2222	3/16 x 1/16	.156	3.96	.340	8.64	1.075	27.31	.055	1.40	5000	1000
VVC-2223	1/4 x 1/16	.200	5.08	.400	10.16	1.075	27.31	.055	1.40	5000	1000
VVC-2224	1/4 x 1/32	.240	6.10	.450	11.43	1.075	27.31	.055	1.40	5000	1000
VVC-2225	3/8 x 1/16	.250	6.35	.510	12.95	1.075	27.31	.055	1.40	5000	1000
VVC-2226	3/8 x 3/32	.250	6.35	.590	14.99	1.175	29.85	.055	1.40	4000	800
VVC-2227	1/2 x 1/16	.312	7.92	.650	16.51	1.175	29.85	.060	1.52	4000	800
VVC-2228	1/2 x 3/32	.312	7.92	.700	17.78	1.175	29.85	.060	1.52	3000	600
VVC-2229	1/2 x 1/8	.312	7.92	.750	19.05	1.175	29.85	.060	1.52	3000	600
VVC-2230	5/8 x 3/32	.330	8.38	.880	23.35	1.175	29.85	.065	1.65	3000	600

26 Series

VVC-2600	1/8 x 1/32	.160	4.06	.210	5.33	.400	10.16	.045	1.14	10000	1000
VVC-2601	1/8 x 1/16	.190	4.83	.275	6.99	.650	16.25	.055	1.40	10000	1000
VVC-2602	3/16 x 1/16	.240	6.10	.340	8.64	.650	16.25	.055	1.40	8000	1000
VVC-2603	1/4 x 1/16	.325	8.26	.400	10.16	.750	19.05	.055	1.40	5000	1000
VVC-2604	1/4 x 3/32	.375	9.53	.470	11.94	.750	19.05	.055	1.40	5000	1000
VVC-2605	3/8 x 1/16	.440	11.18	.525	13.34	.750	19.05	.055	1.40	5000	1000
VVC-2606	3/8 x 3/32	.475	12.07	.585	14.86	.750	19.05	.055	1.40	5000	1000
VVC-2607	1/2 x 1/16	.550	13.97	.650	16.51	.800	20.32	.060	1.52	3000	600
VVC-2608	1/2 x 3/32	.630	16.00	.710	18.03	.800	20.32	.060	1.52	3000	600
VVC-2609	1/2 x 1/8	.650	16.51	.775	19.69	.800	20.32	.060	1.52	3000	600
VVC-2610	5/8 x 3/32	.775	19.69	.840	21.34	.800	20.32	.060	1.52	3000	600

29 Series

VVC-2920	1/8 x 1/16	.230	5.84	.281	7.14	.700	17.78	.045	1.14	5000	1000
VVC-2922	3/16 x 1/16	.292	7.45	.343	8.71	.650	16.51	.050	1.27	5000	1000
VVC-2924	1/4 x 1/16	.355	9.02	.415	10.54	.750	19.05	.055	1.40	5000	1000
VVC-2926	1/4 x 3/32	.417	10.59	.477	12.12	.750	19.05	.055	1.40	5000	1000
VVC-2928	3/8 x 1/16	.480	12.19	.540	13.72	.850	21.59	.060	1.52	5000	1000
VVC-2930	3/8 x 3/32	.542	13.77	.602	15.29	.900	22.86	.060	1.52	5000	1000
VVC-2932	1/2 x 3/32	.667	16.94	.737	18.72	.875	22.23	.060	1.52	3000	600
VVC-2934	5/8 x 3/32	.792	20.12	.875	22.23	.875	22.23	.065	1.65	3000	600

VHF Series

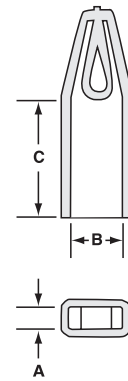
Vinyl Hanger Tips (flat)



VHF Series vinyl hanger tips (flat) are rectangular caps with a flat hanger tip that provides a snug fit to ensure caps remain secure. They are ideal for tools that need to be hung.

Material: Vinyl **Color:** Black
Optional Colors: White, Brown, Orange, Red, Green, Gray, Blue, Yellow

Note: VHF Series is available in lengths up to 1.75".



Vinyl Hanger Tips (flat) VHF Series

Caplugs No.	Dimensions						Packaging	
	A		B		C		Carton Quantity	Mini Pak Quantity
	In	mm	In	mm	In	mm		
VHF-125x750-16	.125	3.17	.750	19.05	1.000	25.40	1500	300
VHF-250x750-16	.250	6.35	.750	19.05	1.000	25.40	1000	200
VHF-250x1000-16	.250	6.35	1.000	25.40	1.000	25.40	900	180
VHF-375x1000-16	.375	9.52	1.000	25.40	1.000	25.40	800	160
VHF-500x1000-16	.500	12.70	1.000	25.40	1.000	25.40	700	140

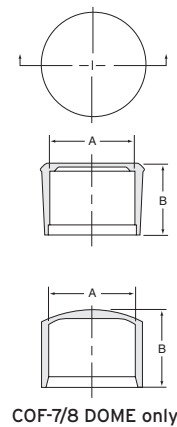
COF Series

Caps for Round Tubing and Rods



COF Series finishing caps for round tubing and rods are economical, attractive glides for everything from household and patio furniture to exercise equipment. The caps cover any scratches, burrs or distortions that may result from cutting operations. In addition, they provide protection against injury from sharp rod and tubing edges.

Material: Low-Density Polyethylene **Color:** Black



Caps for Round Tubing and Rods COF Series

Caplugs No.	Dimensions				Packaging	
	A		B		Carton Quantity	Mini Pak Quantity
	In	mm	In	mm		
COF-1/4	.250	6.35	.46	12.00	10000	1000
COF-3/8	.375	9.53	.46	12.00	10000	1000
COF-1/2	.500	12.70	.59	15.00	7000	1000
COF-5/8	.625	15.88	.59	15.00	5000	1000
COF-3/4	.750	19.05	.71	18.00	4000	800
COF-7/8	.875	22.23	.71	18.00	2500	500
COF-7/8-DOME	.875	22.23	.84	21.00	2500	500
COF-1	1.000	25.40	.85	22.00	1500	300
COF-1-1/8	1.125	28.58	.85	22.00	1200	300
COF-1-1/4	1.250	31.75	.98	25.00	1000	200
COF-1-1/2	1.500	38.10	.98	25.00	500	100
COF-1-3/4	1.750	44.45	1.10	28.00	500	100

FCR Series

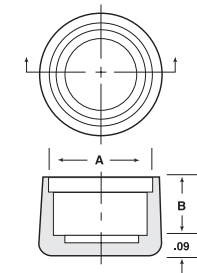
Finishing Caps for Round Tubing



FCR Series finishing caps can be used on numerous products such as furniture, lawn equipment, tools and appliances. The heavy wall construction also makes them ideal for threaded connections where extra protection is required.

- Firm grip prevents accidental removal
- Designed for easy installation

Material: Low-Density Polyethylene **Color:** Black



Finishing Caps for Round Tubing FCR Series

Caplugs No.	Dimensions				Packaging	
	A		B		Carton Quantity	Mini Pak Quantity
	In	mm	In	mm		
FCR-12	.75	19.05	.50	12.70	5000	1000
FCR-14	.88	22.35	.50	12.70	2500	500
FCR-16	1.00	25.40	.50	12.70	2500	500
FCR-18	1.13	28.70	.62	15.75	2500	500
FCR-20	1.25	31.75	.62	15.75	2500	500

RH & RHW Series

Finishing Caps and Washers for Raised Head Screws



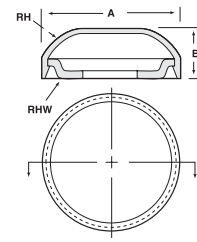
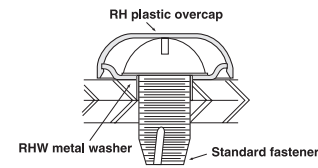
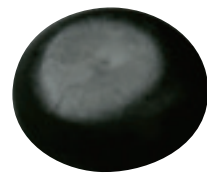
RH Series finishing caps for raised head screws are a combination finishing and protective cap that snaps over a flanged steel washer, replacing the conventional washer. The cap provides dual protection by preventing injury from scraping against sharp fastener edges and by keeping screw head slots free of foreign matter and paint.

RHW Series washers are designed to work with the RH Series Caps

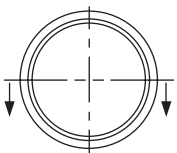
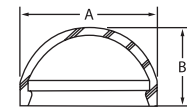
- Adds attractive finish to protruding screw heads

Material: Low-Density Polyethylene (washer - steel, zinc plate)

Color: Black or White (white available in carton only)



RH-10 - Dome Only



Finishing Caps and Washers for Raised Head Screws RH & RHW Series

Caplugs No.	SCREW SIZE	Dimensions				Packaging	
		A		B		Carton Quantity	Mini Pak Quantity
		In	mm	In	mm		
RH-06	4, 6, 8	.48	12.19	.15	3.81	5000	1000
RH-08	8, 10, 12	.50	12.70	.21	5.21	5000	1000

The following metal washers are for use with RH-06 & RH-08

RHW-061	4	-	-	-	-	5000	1000
RHW-062	6	-	-	-	-	5000	1000
RHW-063	8	-	-	-	-	5000	1000
RHW-081	12	-	-	-	-	5000	1000

RH-10	8, 10, 12, 1/4	.71	18.03	.21	5.33	5000	1000
RH-10-DOME	8, 10, 12, 1/4	.71	18.03	.41	10.41	5000	1000

The following metal washers are for use with RH-10 and RH-10-DOME

RHW-102	8	-	-	-	-	5000	1000
RHW-103	10	-	-	-	-	5000	1000
RHW-104	12	-	-	-	-	5000	1000
RHW-105	1/4	-	-	-	-	5000	1000

RH-20	1/4, 5/16, 3/8, 7/16, 1/2	1.19	30.23	.37	9.40	2000	400
-------	---------------------------	------	-------	-----	------	------	-----

The following metal washers are for use with RH-20

RHW-202	10	-	-	-	-	2000	400
RHW-203	1/4	-	-	-	-	2000	400
RHW-204	5/16	-	-	-	-	2000	400
RHW-205	3/8	-	-	-	-	2000	400
RHW-206	7/16	-	-	-	-	2000	400
RHW-207	1/2	-	-	-	-	2000	400

Screw Size	#4	#6	#8	#8	#10	#12	1/4"	5/16"	3/8"	7/16"	1/2"
RH Cap No.	-06			-10, -10 Dome			-20				
Round	-061	-062	-063	-102	-103	-104	-203	-204	-205	-206	-207
Pan	-061	-062	-063	-102	-103	-104	-203	-204	-205	-	-
Fillister	-061	-062	-	-102	-103	-	-203	-204	-	-	-
Truss	-061	-062	-	-102	-103	-	-203	-204	-205	-	-
Binding	-061	-062	-	-102	-103	-104	-203	-204	-205	-	-
Hex	-061	-062	-063	-102	-103	-104	-105 -203	-204	-205	-206	-207

NOTE: When ordering, select the RH Cap and RHW Washer for your size screw. Order as two separate items.

NOTE: RHW washers are also available for orders in stainless steel.*