

Versatility Grinder from Dynabrade

For an Extensive Variety of Finishing Applications

- Wide Range of Contact Arms to Expand Your Capabilities
- Compact Design with More Efficient Dust and Debris Collection





67212 Contact Arm

Contact arm with platen pad and scalloped-edged abrasive belt allows final finishing of radiused areas with no gouging.



67220 Contact Arm

Versatility Grinder accepts Mini-Contact Arms for finishing of hard-to-reach areas.



67209 Contact Arm

Contact arms with large-diameter wheels are superb for finishing of channel areas.



64962 Platen Assembly

Optional large-surface platen assembly is ideal for sharpening knives and other cutlery.

Dynabrade's NEW Versatility Grinder

Accepts the Widest Variety of Contact Arms to Provide ALL Your Finishing Solutions!

Hundreds of Uses!

- CUTLERY • GOLF CLUBS • HARDWARE • PLUMBING FIXTURES
- FABRICATED METAL • MEDICAL INSTRUMENTS • TURBINE BLADES
- PROSTHESES • MEDICAL IMPLANTS • FLATWARE • LAMP BASES
- ARCHITECTURAL HARDWARE • HAND TOOLS • MARINE HARDWARE
- PROPELLERS • SPORT EQUIPMENT • FIREARMS • MUCH MORE!



67213 Contact Arm

Large diameter wheel and platen pad provide the perfect solution for finishing knife blades.



67218 Contact Arm

Unique arm assembly with cotton buff wheel easily conforms to contoured work pieces!



67215 Contact Arm

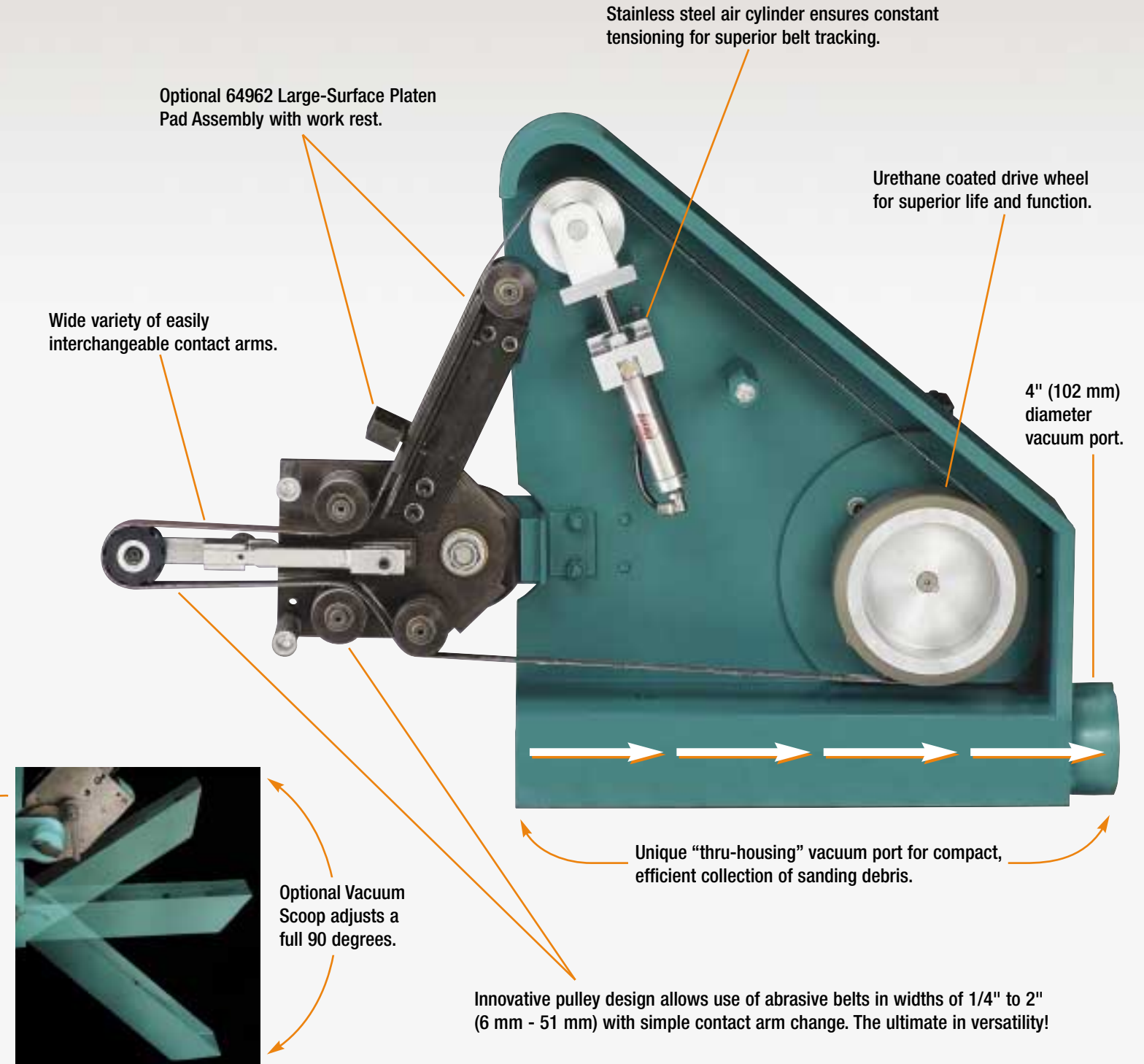
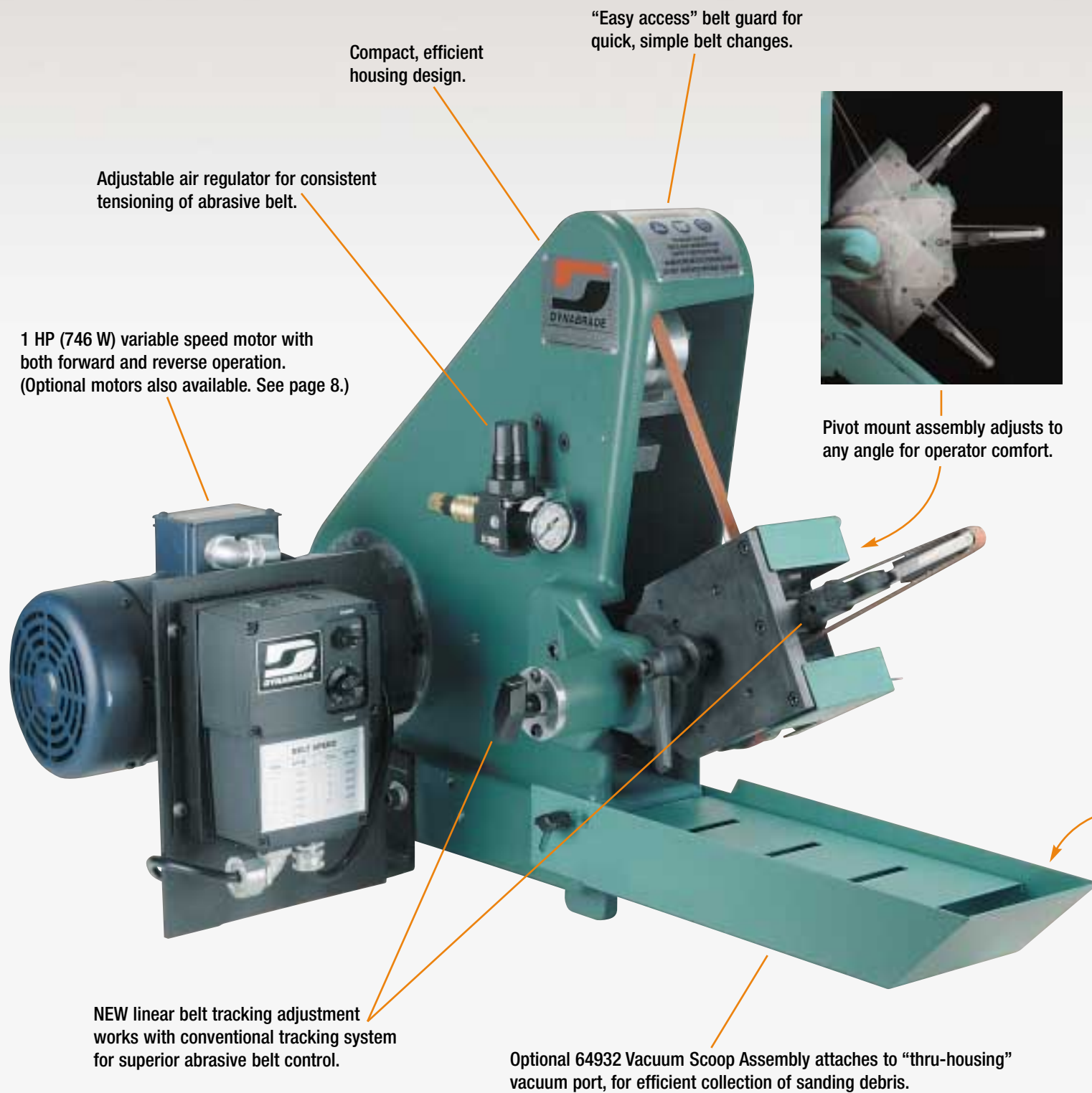
Extra-strong "power arm" accepts 2" (51 mm) wide abrasive belts for heavy-duty grinding.



67211 Contact Arm

Tapered, large-diameter contact wheel with scalloped-edged belt expertly finishes a tight radius.

Dynabrade Versatility Grinder: Features, Benefits & Specifications









Model Number	Motor HP (W)	Abrasive Belt Size Inch (mm)	Voltage	Phase	Frequency	Max. SFPM (SMPM)	Weight Pound (kg)	Length Inch (mm)	Height Inch (mm)	Width Inch (mm)
64900	1 (746)	1/4 - 2 (6 - 51) x 72 (1,830)	115 V	1	50/60 Hz	600 - 4,000 (183 - 1,219)	120 (55)	33 (838)	22 (559)	17 (432)
64901	1 (746)	1/4 - 2 (6 - 51) x 72 (1,830)	230 V	1	50/60 Hz	600 - 4,000 (183 - 1,219)	120 (55)	33 (838)	22 (559)	17 (432)
64902	3 (2,237)	1/4 - 2 (6 - 51) x 72 (1,830)	230 V	3	50/60 Hz	2,000 - 8,000 (510 - 2,440)	120 (55)	33 (838)	22 (559)	17 (432)

Model Number	Motor HP (W)	Abrasive Belt Size Inch (mm)	Voltage	Phase	Frequency	Max. SFPM (SMPM)	Weight Pound (kg)	Length Inch (mm)	Height Inch (mm)	Width Inch (mm)
64903	3 (2,237)	1/4 - 2 (6 - 51) x 72 (1,830)	460 V	3	50/60 Hz	2,000 - 8,000 (510 - 2,440)	120 (55)	33 (838)	22 (559)	17 (432)
64904	1.5 (1,119)	1/4 - 2 (6 - 51) x 72 (1,830)	115 V	1	50/60 Hz	5,400 (1,647)	120 (55)	33 (838)	22 (559)	17 (432)
64905	1.5 (1,119)	1/4 - 2 (6 - 51) x 72 (1,830)	230 V	1	50/60 Hz	5,400 (1,647)	120 (55)	33 (838)	22 (559)	17 (432)

Versatility Grinder Optional Contact Arms



Full range of optional contact wheels available. Various materials, durometers, diameters and widths available by request.

Mini-Arm Assemblies




Part Number	Applications	Belt Size (W x L)	Contact Wheel Assembly (D x W)
67226, 67227 	Access tight areas.	67226: 1/2" x 72" (13mm x 1,830mm)	11049: 3/16" x 3/8" (5mm x 10mm), 3-1/8" (79mm) Reach, Steel 3 Required
		67227: 1/2" x 78" (13mm x 1,981mm)	11049: 3/16" x 3/8" (5mm x 10mm), 6-1/2" (165mm) Reach, Steel 3 Required
67220, 67221, 67222, 67223 	Turbine blade clusters. Great for strap polishing in offset areas.	67220: 1/2" x 72" (13mm x 1,830mm)	11332: 1/4" x 3/8" (6mm x 10mm), Steel
		67221: 1/2" x 72" (13mm x 1,830mm)	11068: 5/16" x 3/8" (8mm x 10mm), Steel
		67222: 3/4" x 72" (19mm x 1,830mm)	11352: 5/16" x 5/8" (8mm x 16mm), Steel
		67223: 1/2" x 72" (13mm x 1,830mm)	11342: 5/16" x 3/8" (8mm x 10mm), 50 Duro, Rubber
67058 	Offset design for strap finishing.	1/2" x 72" (13mm x 1,830mm)	11070: 7/16" x 1/2" (11mm x 13mm), 70 Duro, Rubber
65182 	3/8" (10mm) wide radius wheel for blending.	1/4" to 1/2" x 72" (6mm to 13mm x 1,830mm)	11080: 1" x 3/8" (25mm x 10mm), 70 Duro, Urethane, Radiused
67212 	Use contact wheel or platen area for grinding & finishing.	1/2" x 72" (13mm x 1,830mm)	11078: Rubber, 70 Duro, 5/8" x 3/8" (16mm x 10mm) *11025: Soft/Sponge Platen
65133 	Wide width for tight radius finishing.	1" x 72" (25mm x 1,830mm)	65135: 5/8" x 1" (16mm x 25mm), 70 Duro, Urethane, Flat

**Also accepts 11026 Hard/Cork and 11027 Thin Platen.*

Utility Arm Assemblies

Part Number	Applications	Belt Size (W x L)	Contact Wheel Assembly (D x W)
67200, 67201, 67202, 67203 	Excellent for finishing shoulder areas as well as contact wheel grinding.	67200: 1" x 72" (25mm x 1,830mm)	11650: 2" x 1" (51mm x 25mm), 70 Duro, Urethane, Serrated
		67201: 3/4" x 72" (19mm x 1,830mm)	67045: 2" x 3/4" (51mm x 19mm), 70 Duro, Urethane, Serrated
		67202: 5/8" x 72" (16mm x 1,830mm)	67044: 2" x 5/8" (51mm x 16mm), 70 Duro, Urethane, Serrated
		67203: 1/2" x 72" (13mm x 1,830mm)	67043: 2" x 1/2" (51mm x 13mm), 70 Duro, Urethane, Serrated
67214 	Grind and deburr using either the serrated contact wheel or platen assembly.	1" x 72" (25mm x 1,830mm)	11650: 2" x 1" (51mm x 25mm), 70 Duro, Urethane, Serrated 11605: Hard/Cork Platen; Also Accepts 11604: Soft/Sponge Platen


Specialty Arm Assemblies

Part Number	Applications	Belt Size (W x L)	Contact Wheel Assembly (D x W)
67205 	Unique split wheel design allows operator to grind up against work area shoulders without arm interference.	1-1/2" x 72" (38mm x 1,830mm)	67180: 7/8" (22mm) D, Split Wheel, 70 Duro, Rubber 2 Required
67204 		1-1/2" x 72" (38mm x 1,830mm)	67181: 2" (51mm) D, Serrated, Split Wheel, 70 Duro, Urethane 2 Required
67213 	Cutlery contact arm assembly incorporates a large diameter contact wheel and a raised platen assembly for complete finishing capabilities.	2" x 78" (51mm x 1,981mm)	67122: 4" x 2" (102mm x 51mm), 50 Duro, Rubber, Smooth 11839: Hard/Cork Platen

Utility Arm Large Wheel Assemblies

Part Number	Applications	Belt Size (W x L)	Contact Wheel Assembly (D x W)
67211 	Blend fillet welds; excellent for tight radius work.	1/2" to 1" x 72" (13mm to 25mm x 1,830mm)	11638: 4" x 1/2" (102mm x 13mm), 70 Duro, Rubber, Severe Radius
67210 	Polish contours without gouging workpiece.	5/8" to 1" x 72" (16mm to 25mm x 1,830mm)	11642: 4" x 5/8" (102mm x 16mm), 40 Duro, Rubber, Serrated, Scoop
67209 	70 durometer wheel provides a firm support for abrasive belt to allow base finishing of channel areas.	1/2" x 72" (13mm x 1,830mm)	67139: 4" x 1/2" (102mm x 13mm), 70 Duro, Urethane, Serrated
67224 	Grind, blend and polish welds; strap polish using slack of belt.	1" x 72" (25mm x 1,830mm)	11620: 4" x 1" (102mm x 25mm), 40 Duro, Rubber, Smooth
67218 	Excellent for very fine finishing work; use when extreme conformability is necessary.	1" x 72" (25mm x 1,830mm)	67068: 4" x 1/2" (102mm x 13mm), Cotton Cushion

Power Arm Assemblies

Part Number	Applications	Belt Size (W x L)	Contact Wheel Assembly (D x W)
67207 	Using contact wheel, finish using 1-1/4" (32mm) wide abrasives; 1/2" (13mm) radius or greater.	1-1/4" x 72" (32mm x 1,830mm)	67107: 7/8" x 1-1/4" (22mm x 32mm) 70 Duro, Urethane
67217 	Using contact wheel, finish using 1-1/2" (38mm) wide abrasives; 9/16" (14mm) radius or greater.	1-1/2" x 72" (38mm x 1,830mm)	65378: 1" x 1-1/2" (25mm x 38mm), 70 Duro, Urethane, Flat
67208 	Soft durometer contact wheel with smooth face for fine finishing applications.	1-1/4" x 72" (32mm x 1,830mm)	67105: 2" x 1-1/4" (51mm x 32mm), 50 Duro, Urethane, Smooth
67206 	Using contact wheel, grind with 1-1/4" (32mm) wide abrasives; 1-1/16" (27mm) radius or greater.	1-1/4" x 72" (32mm x 1,830mm)	67101: 2" x 1-1/4" (51mm x 32mm), 70 Duro, Urethane, Serrated
67215, 67216 	Aggressive grinding applications.	67215: 2" x 72" (51mm x 1,830mm)	11847: 2" x 2" (51mm x 51mm), 70 Duro, Urethane, Serrated
		67216: 1-1/2" x 72" (38mm x 1,830mm)	65363: 2" x 1-1/2" (51mm x 38mm), 70 Duro, Urethane, Serrated
67219 	Material removal applications; castings, etc.	2" x 72" (51mm x 1,830mm)	67116: 2-3/4" x 2" (70mm x 51mm), 90 Duro, Rubber, Serrated

Versatility Grinder Abrasives & Accessories

Abrasive Belts

Grit	Material	1/4" x 72" (6mm x 1,830mm)	1/2" x 72" (13mm x 1,830mm)	1" x 72" (25mm x 1,830mm)	1-1/2" x 72" (38mm x 1,830mm)	2" x 72" (51mm x 1,830mm)	2" x 78" (51mm x 1,981mm)
40	Alumina Zirconia	84807	84808	84809	84810	84811	*84812
60	Alumina Zirconia	84771	84772	84773	84774	84775	*84776
80	Alumina Zirconia	84777	84778	84779	84780	84781	84782
120	Alumina Zirconia	84789	84790	84791	84792	84793	84794
180	Aluminum Oxide	94795	94796	94797	94798	94799	*94800
220	Aluminum Oxide	94801	94802	94803	94804	94805	*94806
Super Fine	Non-Woven Nylon	*93729	93730	93731	93732	93733	*93734
Very Fine	Non-Woven Nylon	*93735	93736	93737	93738	93739	*93740
Medium	Non-Woven Nylon	N/A	93741	93742	93743	93744	*93745
Coarse	Non-Woven Nylon	N/A	93746	93747	93748	93749	*93750
Cloth	Cloth	N/A	94841	*94842	*94843	*94844	*94845

*Non-stock item – please allow 2-4 weeks delivery. Minimum order quantities may apply.

1 HP Electric Motor

Variable Speed

Part# 64870

- 1 HP (746 W),
115 Volt, 1 Phase,
50/60 Hz



Part# 64871

- 1 HP (746 W),
230 Volt, 1 Phase,
50/60 Hz

1.5 HP Electric Motor

Fixed Speed

Part# 64872

- 1.5 HP (1,119 W),
115 Volt, 1 Phase,
50/60 Hz



Part# 64873

- 1.5 HP (1,119 W),
230 Volt, 1 Phase,
50/60 Hz

3 HP Electric Motor

Variable Speed

Part# 64874

- 3 HP (2,237 W),
230 Volt, 3 Phase,
50/60 Hz



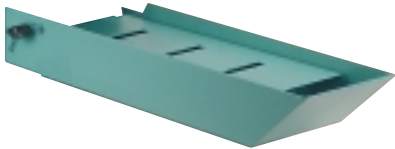
Part# 64875

- 3 HP (2,237 W),
460 Volt, 3 Phase,
50/60 Hz

Vacuum Scoop Assembly

Part# 64932

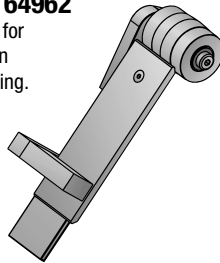
- Attaches to "thru-housing" vacuum port,
for efficient collection of sanding debris.



Platen Assembly

Part# 64962

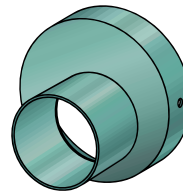
- Ideal for
platen
grinding.



Vacuum Adapter

Part# 64923

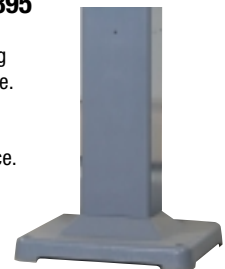
- For connection to 2-1/2"
(63mm) dia. vacuum hose.



Pedestal Assembly

Part# 64895

- For easy
positioning
of machine.
Frees up
additional
work space.



For Other Dynabrade Tools and Related Accessories, Visit www.dynabrade.com



DYNABRADE, INC.

8989 Sheridan Drive • Clarence, New York 14031-1490 • Phone: (716) 631-0100
Fax: 716-631-2073 • US Consumers Call Toll Free: 1-800-828-7333

DYNABRADE INTERNATIONAL

8989 Sheridan Drive • Clarence, New York 14031-1490 • Phone: (716) 631-0100
Fax: 716-631-2524 • Canadian Consumers Call Toll Free: 1-800-344-1488

DYNABRADE EUROPE S.à r.l.

Zone Artisanale • L-5485 Wormeldange—Haut, Luxembourg
Telephone: 352 76 84 94 1 • Fax: 352 76 84 95 1

DISTRIBUTED BY:

Try Our U.S. Consumer Toll Free Number: 1-888 DYNABRADE (or 1-800-828-7333)