

HAND TOOLS.

USED BY PROFESSIONALS FOR OVER 160 YEARS.

The Stanley name is synonymous with durability and dependability. Each product is developed to meet the needs of the end user – making the job easier and faster.



STANLEY[®]

Hand Tools

STANLEY
FatMax
XTREME



13'
STANDOUT™

STANLEY® FATMAX® XTREME™ TAPE RULES WITH BLADEARMOR™ COATING

- 1-1/4" wide blade for easy readability and 13' tape stand out.
- BladeArmor™ coating on the first 6" maximizes durability.
- Chrome plated ABS case is over molded with soft-grip rubber for maximum comfort, slip-resistant grip, and durability.

Product SKU No.	Blade Length		Blade Width Inches	Stud Markings		Box/Ctn
	Feet	Meters		16 in.	19.2 in.	
33-885	16	—	1-1/4	Yes	Yes	4 / 24
33-890	25	—	1-1/4	Yes	Yes	4 / 24
33-895	30	—	1-1/4	Yes	Yes	4 / 24
33-900	35	—	1-1/4	Yes	Yes	4 / 24

Top edge: Major scale numbered in consecutive feet. Minor scale numbered in consecutive inches after each foot. Graduated in 16ths of an inch.

Bottom edge: Numbered in consecutive inches. Graduated in 16ths of an inch.

STANLEY
FatMax



11'
STANDOUT™

STANLEY® FATMAX® TAPE RULES WITH BLADEARMOR™ COATING

- 1-1/4" wide blade for easy readability and 11' tape stand out.
- BladeArmor™ coating on the first 4" maximizes durability.
- High-impact, yellow ABS case is over molded with soft-grip rubber for maximum comfort, slip-resistant grip, and durability.

Product SKU No.	Blade Length		Blade Width Inches	Stud Markings		Box/Ctn
	Feet	Meters		16 in.	19.2 in.	
33-716	16	—	1-1/4	Yes	Yes	4 / 24
33-725	25	—	1-1/4	Yes	Yes	4 / 24
33-730	30	—	1-1/4	Yes	Yes	4 / 24
33-735	35	—	1-1/4	Yes	Yes	4 / 24
33-740	40	—	1-1/4	Yes	Yes	4 / 16

Top edge: Major scale numbered in consecutive feet. Minor scale numbered in consecutive inches after each foot. Graduated in 16ths of an inch.

Bottom edge: Numbered in consecutive inches. Graduated in 16ths of an inch.

Product SKU No.	Blade Length		Blade Width Inches	Stud Markings		Box/Ctn
	Feet	Meters		16 in.	19.2 in.	
33-726 cm Grad.	26	8	1-1/4	Yes	Yes	4 / 24

Top edge: Numbered in consecutive inches. First twelve inches graduated in 32nds of an inch.

Remainder graduated in 16ths of an inch. Marked every 12 inches.

Bottom edge: Numbered in consecutive cm. Graduated in mm. Marked every 10 cm



9'
STANDOUT™

STANLEY® MAXSTEEL® TAPE RULES WITH BLADEARMOR™ COATING

- 1" wide blade for easy readability and 9' tape stand out.
- BladeArmor™ coating on the first 3" maximizes durability.
- High-impact, yellow ABS case with soft-grip rubber for maximum comfort, slip-resistant grip, and durability.

Product SKU No.	Blade Length		Blade Width Inches	Stud Markings		Box/Ctn
	Feet	Meters		16 in.	19.2 in.	
33-799	25	—	1	Yes	Yes	4 / 24
33-800	30	—	1	Yes	Yes	4 / 24

Top edge: Major scale numbered in consecutive feet. Minor scale numbered in consecutive inches after each foot. Graduated in 16ths of an inch.

Bottom edge: Numbered in consecutive inches. Graduated in 16ths of an inch.



Hand Tools

STANLEY® MAXSTEEL® TAPE RULES

- Versatile 5/8", 3/4" and 1" wide blades and 9' standout (1" wide blades only).
- High-impact, yellow ABS case with soft-grip rubber for maximum comfort, slip-resistant grip, and durability.

Product SKU No.	Blade Length		Blade Width Inches	Stud Markings		Box/Ctn
	Feet	Meters		16 in.	19.2 in.	
33-691	12	—	5/8	Yes	Yes	4 / 24
33-692	16	—	3/4	Yes	Yes	6 / 30

Top edge: Major scale numbered in consecutive feet. Minor scale numbered in consecutive inches after each foot. First twelve inches graduated in 32nds of an inch. Remainder in 16ths of an inch. Bottom edge: Numbered in consecutive inches. First twelve inches graduated in 32nds of an inch. Remainder in 16ths of an inch.

Product SKU No.	Blade Length		Blade Width Inches	Stud Markings		Box/Ctn
	Feet	Meters		16 in.	19.2 in.	
33-689 Fractional	16	—	3/4	Yes	Yes	4 / 24

Major scale numbered in consecutive feet. Minor scale numbered in consecutive inches. Graduated in 16ths of an inch. Numerical readouts every 8th of an inch.

Product SKU No.	Blade Length		Blade Width Inches	Stud Markings		Box/Ctn
	Feet	Meters		16 in.	19.2 in.	
33-695 cm Grad.	16	5	3/4	Yes	No	6 / 30
33-591 cm Grad.	26	8	1	Yes	No	4 / 24
33-605 cm Grad.	33	10	1	Yes	No	4 / 24

Top edge: Numbered in consecutive inches. First twelve inches graduated in 32nds of an inch. Remainder graduated in 16ths of an inch. Marked every 12 inches. Bottom edge: Numbered in consecutive cm. Graduated in mm. Marked every 10 cm.

Product SKU No.	Blade Length		Blade Width Inches	Stud Markings		Box/Ctn
	Feet	Meters		16 in.	19.2 in.	
33-599	25	—	1	Yes	Yes	4 / 24
33-600	30	—	1	Yes	Yes	4 / 24

Top edge: Major scale numbered in consecutive feet. Minor scale numbered in consecutive inches after each foot. Graduated in 16ths of an inch. Bottom edge: Numbered in consecutive inches. Graduated in 16ths on an inch.

STANLEY® POWERLOCK® TAPE RULES WITH BLADEARMOR™ COATING

- 1" wide blade for easy readability and 8' tape standout.
- BladeArmor™ coating on the first 3" maximizes durability.
- High-impact, chrome plated ABS case.
- Conversion tables and useful formulas printed on the back of the blade (33-516 only).

Product SKU No.	Blade Length		Blade Width Inches	Stud Markings		Box/Ctn
	Feet	Meters		16 in.	19.2 in.	
33-516	16	—	1	Yes	Yes	4 / 24

Top edge: Major scale numbered in consecutive feet. Minor scale numbered in consecutive inches after each foot. First twelve inches graduated in 32nds of an inch. Remainder in 16ths of an inch.

Bottom edge: Numbered in consecutive inches. First twelve inches graduated in 32nds of an inch. Remainder in 16ths of an inch.

Product SKU No.	Blade Length		Blade Width Inches	Stud Markings		Box/Ctn
	Feet	Meters		16 in.	19.2 in.	
33-525	25	—	1	Yes	Yes	4 / 24
33-530	30	—	1	Yes	Yes	4 / 24

Top edge: Major scale numbered in consecutive feet. Minor scale numbered in consecutive inches after each foot. Graduated in 16ths of an inch.

Bottom edge: Numbered in consecutive inches. Graduated in 16ths on an inch.



Numerical readouts every 1/8" (33-689 only).



Hand Tools



STANLEY® POWERLOCK® CLASSIC TAPE RULES

- 1" wide blade for easy readability and 7' tape standout.
- High-impact, chrome plated ABS case.

Product SKU No.	Blade Length		Blade Width Inches	Stud Markings		Box/Ctn
	Feet	Meters		16 in.	19.2 in.	
33-425	25	—	1	Yes	Yes	4 / 24
33-430	30	—	1	Yes	Yes	4 / 24
33-835	35	—	1	Yes	Yes	4 / 24

Top edge: Major scale numbered in consecutive feet. Minor scale numbered in consecutive inches after each foot. Graduated in 16ths of an inch.

Bottom edge: Numbered in consecutive inches. Graduated in 16ths of an inch.

Product SKU No.	Blade Length		Blade Width Inches	Stud Markings		Box/Ctn
	Feet	Meters		16 in.	19.2 in.	
33-428 cm Grad.	26	8	1	Yes	No	4 / 24

Top edge: Numbered in consecutive inches. First twelve inches graduated in 32nds of an inch.

Remainder graduated in 16ths of an inch. Marked every 12 inches.

Bottom edge: Numbered in consecutive cm. Graduated in mm. Marked every 10 cm.

STANLEY® POWERLOCK® TAPE RULES

- Mylar® polyester film helps extend life of entire blade.
- High-impact, chrome plated ABS case.

Product SKU No.	Blade Length		Blade Width Inches	Stud Markings		Box/Ctn
	Feet	Meters		16 in.	19.2 in.	
33-116	16	—	3/4	Yes	Yes	4 / 24

Top edge: Major scale numbered in consecutive feet. Minor scale numbered in consecutive inches after each foot. First twelve inches graduated in 32nds of an inch. Remainder in 16ths of an inch.

Bottom edge: Numbered in consecutive inches. First twelve inches graduated in 32nds of an inch.

Remainder in 16ths of an inch.

Product SKU No.	Blade Length		Blade Width Inches	Stud Markings		Box/Ctn
	Feet	Meters		16 in.	19.2 in.	
33-158 cm Grad.	16	5	3/4	Yes	No	6 / 36

Top edge: Major scale numbered in consecutive inches. First twelve inches graduated in 32nds of an inch. Remainder graduated in 16ths of an inch. Marked every 12 inches.

Bottom edge: Numbered in consecutive cm. Graduated in mm. Marked every 10 cm.

STANLEY® POWERLOCK® POCKET TAPE RULE WITH DIAMETER SCALE

- Polymer coating helps extend life of entire blade.
- High-impact, chrome plated ABS case.
- Back of blade provides scale that measures up to 3' diameter graduated in 1/64".

Product SKU No.	Blade Length		Blade Width Inches	Stud Markings		Box/Ctn
	Feet	Meters		16 in.	19.2 in.	
33-115 Diameter	10	—	1/4	Yes	No	6 / 36

Major scale numbered in consecutive feet. Minor scale numbered in consecutive inches.

First twelve inches graduated in 32nds of an inch. Remainder in 16ths of an inch.



Hand Tools

STANLEY® POWERLOCK® TAPE RULES WITH METAL CASE

- Mylar® polyester film helps extend life of entire blade.
- High-impact, chrome plated metal case.

Product SKU No.	Blade Length		Blade Width Inches	Stud Markings		Box/Ctn
	Feet	Meters		16 in.	19.2 in.	
33-231 cm Grad.	10	3	1/2	No	No	6 / 36

Top edge: Numbered in consecutive inches. First twelve inches graduated in 32nds of an inch. Remainder graduated in 16ths of an inch. Marked every 12 inches.

Bottom edge: Numbered in consecutive cm. Graduated in mm. Marked every 10 cm.

Product SKU No.	Blade Length		Blade Width Inches	Stud Markings		Box/Ctn
	Feet	Meters		16 in.	19.2 in.	
33-212	12	—	1/2	Yes	Yes	6 / 36

Top edge: Major scale numbered in consecutive feet. Minor scale numbered in consecutive inches after each foot. Graduated in 16ths of an inch.

Bottom edge: Numbered in consecutive inches. First twelve inches graduated in 32nds of an inch. Remainder in 16ths of an inch.

Product SKU No.	Blade Length		Blade Width Inches	Stud Markings		Box/Ctn
	Feet	Meters		16 in.	19.2 in.	
33-215 mm Grad.	12	3.5	1/2	No	No	6 / 36

Top edge: Numbered in consecutive inches. First twelve inches graduated in 32nds of an inch. Remainder graduated in 16ths of an inch. Marked every 12 inches.

Bottom edge: Major scale numbered in consecutive meters. Intermediate scale numbered in consecutive 100 mm repeated every meter. Minor scale numbered in consecutive 10 mm repeated every 100mm. Graduated in mm.

Product SKU No.	Blade Length		Blade Width Inches	Stud Markings		Box/Ctn
	Feet	Meters		16 in.	19.2 in.	
33-272 Decimal	12	—	1/2	No	No	6 / 36

Top edge: Numbered in consecutive inches. First six inches graduated in 32nds of an inch.

Remainder graduated in 16ths of an inch.

Bottom edge: Numbered in consecutive 10ths of an inch, repeated every inch. Graduated in 50ths of an inch for the first six inches. Remainder graduated in 10ths of an inch.

Product SKU No.	Blade Length		Blade Width Inches	Stud Markings		Box/Ctn
	Feet	Meters		16 in.	19.2 in.	
33-312	12	—	3/4	Yes	Yes	6 / 36

Top edge: Major scale numbered in consecutive feet. Minor scale numbered in consecutive inches after each foot. First twelve inches graduated in 32nds of an inch. Remainder in 16ths of an inch.

Bottom edge: Numbered in consecutive inches. First twelve inches graduated in 32nds of an inch. Remainder in 16ths of an inch.

STANLEY® POWERLOCK® KEYCHAIN TAPE

- Polymer coating helps extend life of entire blade.
- High-impact, chrome plated ABS case.

Product SKU No.	Blade Length		Blade Width Inches	Stud Markings		Box/Ctn
	Feet	Meters		16 in.	19.2 in.	
39-130	3	—	1/4	Yes	No	6 / 72

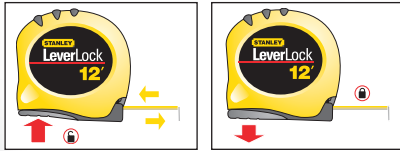
Major scale numbered in consecutive feet. Minor scale numbered in consecutive inches.

First twelve inches graduated in 32nds of an inch. Remainder in 16ths of an inch.



The shape of the PowerLock® tape rule case is a trademark of The Stanley Works or its affiliates.
Mylar® is a registered trademark of DuPont Teijin Films

Hand Tools



STANLEY® LEVERLOCK® TAPE RULES

- Versatile 1/2", 3/4", and 1" wide blades and 7' tape standout (1" wide blades only).
- High-impact, yellow ABS case is over molded with soft-grip rubber for maximum comfort, slip-resistant grip, and durability.
- Unique power return feature, with automatic bottom lock, streamlines tape operation.

Product SKU No.	Blade Length		Blade Width Inches	Stud Markings		Box/Ctn
	Feet	Meters		16 in.	19.2 in.	
30-810	12	—	1/2	Yes	Yes	6 / 36

Top edge: Major scale numbered in consecutive feet. Minor scale numbered in consecutive inches after each foot. Graduated in 16ths of an inch.

Bottom edge: Numbered in consecutive inches. First twelve inches graduated in 32nds of an inch. Remainder in 16ths of an inch.

Product SKU No.	Blade Length		Blade Width Inches	Stud Markings		Box/Ctn
	Feet	Meters		16 in.	19.2 in.	
30-812	16	—	3/4	Yes	Yes	6 / 36

Top edge: Major scale numbered in consecutive feet. Minor scale numbered in consecutive inches after each foot. First twelve inches graduated in 32nds of an inch. Remainder in 16ths of an inch.

Bottom edge: Numbered in consecutive inches. First twelve inches graduated in 32nds of an inch. Remainder in 16ths of an inch.

Product SKU No.	Blade Length		Blade Width Inches	Stud Markings		Box/Ctn
	Feet	Meters		16 in.	19.2 in.	
30-825	25	—	1	Yes	Yes	4 / 24
30-830	30	—	1	Yes	Yes	4 / 24

Top edge: Major scale numbered in consecutive feet. Minor scale numbered in consecutive inches after each foot. Graduated in 16ths of an inch.

Bottom edge: Numbered in consecutive inches. Graduated in 16ths of an inch.

Product SKU No.	Blade Length		Blade Width Inches	Stud Markings		Box/Ctn
	Feet	Meters		16 in.	19.2 in.	
30-854 Fractional	25	—	1	Yes	Yes	4 / 24

Major scale numbered in consecutive feet. Minor scale numbered in consecutive inches. Graduated in 16ths of an inch. Numerical readouts every 8th of an inch.

Product SKU No.	Blade Length		Blade Width Inches	Stud Markings		Box/Ctn
	Feet	Meters		16 in.	19.2 in.	
30-824 cm Grad.	26	8	1	Yes	No	4 / 24

Top edge: Numbered in consecutive inches. First twelve inches graduated in 32nds of an inch. Remainder graduated in 16ths of an inch. Marked every 12 inches.

Bottom edge: Numbered in consecutive cm. Graduated in mm. Marked every 10 cm.

TOOL TIPS FOR TAPE RULES

Here are some suggestions to help you keep your tape rule in good working order and extend its useful life.

KEEP BLADE CLEAN

The graduated blade is protected by Mylar® polyester film, but dirt, sand, drywall dust or metal chips can scratch through or wear away the protective layer. Wipe the blade clean frequently when working with gritty materials. Sticky roofing tar and glues can ruin the winding action of your tape rule.

WATCH OUT FOR WATER & OTHER FLUIDS

Moisture left on the blade will work its way into the spring motor and rust will follow. Wipe the blade dry after working in wet environments. Beware of solvents; some will attack the Mylar® polyester film or melt the protective skin. Use only mineral spirits or alcohol to remove tar or glue.

CONTROL RETRACTION SPEED

Don't let the blade recoil at high speed; it will strike the case with the force of a hammer blow and the whipping action can damage the blade or pinch your finger. Practice slowing the blade with your finger under the tape's mouth. LeverLock® models will stop the blade when the lock is released.



Hand Tools

STANLEY® TAPE RULES

- Versatile 1/2", 3/4", and 1" wide blades and 7' standout (1" wide blades only).
- High-impact, yellow ABS case (30-506 Black ABS case).

Product SKU No.	Blade Length		Blade Width Inches	Stud Markings		Box/Ctn
	Feet	Meters		16 in.	19.2 in.	
30-506	6	—	1/2	Yes	Yes	10 / 100
30-485	12	—	1/2	Yes	Yes	6 / 36

Top edge: Major scale numbered in consecutive feet. Minor scale numbered in consecutive inches after each foot. Graduated in 16ths of an inch.

Bottom edge: Numbered in consecutive inches. First twelve inches graduated in 32nds of an inch. Remainder in 16ths of an inch.

Product SKU No.	Blade Length		Blade Width Inches	Stud Markings		Box/Ctn
	Feet	Meters		16 in.	19.2 in.	
30-495	16	—	3/4	Yes	Yes	6 / 36

Top edge: Major scale numbered in consecutive feet. Minor scale numbered in consecutive inches after each foot. First twelve inches graduated in 32nds of an inch. Remainder in 16ths of an inch.

Bottom edge: Numbered in consecutive inches. First twelve inches graduated in 32nds of an inch. Remainder in 16ths of an inch.

Product SKU No.	Blade Length		Blade Width Inches	Stud Markings		Box/Ctn
	Feet	Meters		16 in.	19.2 in.	
30-496 cm Grad.	16	5	3/4	Yes	No	6 / 36
30-456 cm Grad.	26	8	1	Yes	No	6 / 24

Top edge: Numbered in consecutive inches. First twelve inches graduated in 32nds of an inch.

Remainder graduated in 16ths of an inch. Marked every 12 inches.

Bottom edge: Numbered in consecutive cm. Graduated in mm. Marked every 10 cm.

Product SKU No.	Blade Length		Blade Width Inches	Stud Markings		Box/Ctn
	Feet	Meters		16 in.	19.2 in.	
30-454 Fractional	25	—	1	Yes	Yes	6 / 24

Major scale numbered in consecutive feet. Minor scale numbered in consecutive inches.

Graduated in 16ths of an inch. Numerical readouts every 8th of an inch.

Product SKU No.	Blade Length		Blade Width Inches	Stud Markings		Box/Ctn
	Feet	Meters		16 in.	19.2 in.	
30-455	25	—	1	Yes	Yes	6 / 24
30-464	30	—	1	Yes	Yes	6 / 24

Top edge: Major scale numbered in consecutive feet. Minor scale numbered in consecutive inches after each foot. Graduated in 16ths of an inch.

Bottom edge: Numbered in consecutive inches. Graduated in 16ths of an inch.



Numerical readouts every 1/8" (30-454 only).

Measuring

TOOL TIPS FOR TAPE RULES

TRU-ZERO HOOK IS SUPPOSED TO MOVE

The hook slides to accommodate inside and outside measurements, helping you avoid errors due to the thickness of the hook. Clinching the rivets will make the hook inaccurate.

WATCH WHERE YOU STEP

Beware of sharp corners. Stepping on the blade will almost always cause damage. Pulling the tape over a sharp edge may create a kinked or twisted blade. Continual flexing of these kinks, when the blade rewinds into the case, will eventually break the blade.

LOOK OUT FOR HOOK TRAPS

The hook can be snared easily on cracks, on exposed nail heads, and the like. Take care to dislodge the hook before pulling sharply on the blade. Otherwise you might bend the hook or cause the blade to kink or tear.

USE SPECIAL CARE AROUND POWER TOOLS

When measuring near power tools, be sure your tape rule blade stays clear of the cutting path. Spinning saw blades and drill bits will rip a tape rule.

Hand Tools

Measuring



STANLEY® HIGH-VISIBILITY TAPE RULES

- Versatile 1/2", 3/4", and 1" wide blades and 7' tape standout (1" wide blades only).
- High-impact, high-visibility green ABS case is over molded with soft-grip rubber for maximum comfort, slip-resistant grip, and durability.

Product SKU No.	Blade Length		Blade Width Inches	Stud Markings		Box/Ctn
	Feet	Meters		16 in.	19.2 in.	
30-301	12	—	1/2	Yes	Yes	6 / 36

Top edge: Major scale numbered in consecutive feet. Minor scale numbered in consecutive inches after each foot. Graduated in 16ths of an inch.

Bottom edge: Numbered in consecutive inches. First twelve inches graduated in 32nds of an inch. Remainder in 16ths of an inch.

Product SKU No.	Blade Length		Blade Width Inches	Stud Markings		Box/Ctn
	Feet	Meters		16 in.	19.2 in.	
30-304	16	—	3/4	Yes	Yes	6 / 36

Top edge: Major scale numbered in consecutive feet. Minor scale numbered in consecutive inches after each foot. First twelve inches graduated in 32nds of an inch. Remainder in 16ths of an inch.

Bottom edge: Numbered in consecutive inches. First twelve inches graduated in 32nds of an inch. Remainder in 16ths of an inch.

Product SKU No.	Blade Length		Blade Width Inches	Stud Markings		Box/Ctn
	Feet	Meters		16 in.	19.2 in.	
30-305	25	—	1	Yes	Yes	6 / 36

Top edge: Major scale numbered in consecutive feet. Minor scale numbered in consecutive inches after each foot. Graduated in 16ths of an inch.

Bottom edge: Numbered in consecutive inches. Graduated in 16ths of an inch.

STANLEY
FatMax



3 to 1 Gear Drive

STANLEY® FATMAX® CLOSED CASE LONG TAPES

- 3/8" wide stainless steel blade.
- 3-to-1 Gear drive for fast rewinds.
- Steel roller cage protects case from being cut by blade during rewind.
- High-impact, yellow ABS case is over molded with soft-grip rubber for maximum comfort, slip-resistant grip, and durability.

Product SKU No.	Blade Length		Blade Width Inches	Stud Markings		Box/Ctn
	Feet	Meters		16 in.	19.2 in.	
34-129	50	—	3/8	Yes	No	6 / 24
34-130	100	—	3/8	Yes	No	6 / 24

Major scale in consecutive feet. Minor scale numbered in consecutive inches after each foot. Graduated in 8ths of an inch.

STANLEY® CLOSED CASE LONG TAPES

- 3/8" wide steel blade.
- Polymer coating helps extend life of entire blade.
- High-impact, yellow ABS case.



Product SKU No.	Blade Length		Blade Width Inches	Stud Markings		Box/Ctn
	Feet	Meters		16 in.	19.2 in.	
34-103	50	—	3/8	Yes	No	6 / 24
34-106	100	—	3/8	Yes	No	6 / 24

Major scale in consecutive feet. Minor scale numbered in consecutive inches after each foot. Graduated in 8ths of an inch.

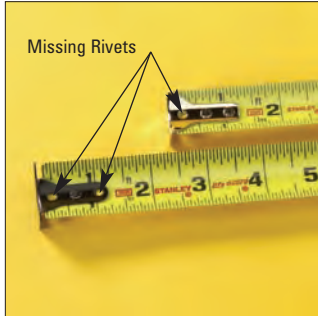


Hand Tools

Tape Rule Replacement Policy

Valid Replacement Conditions

A tape rule showing defects in material or workmanship like those shown below should be replaced free of charge. Send the defective tape rule to your wholesaler for credit adjustment.



Missing Hook Rivets



Broken Spring; Blade Will Not Retract

Ruler shows little or no wear, no signs of abuse — but blade will not retract into the case or wants to feed itself out of the case mouth.



Defective Component

Ruler shows little or no wear, no signs of abuse — but one of its components is broken or will not function correctly.



BladeArmor™ Coating Missing

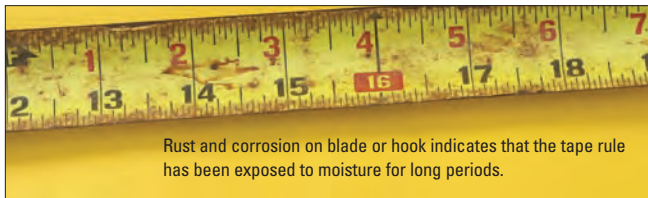
Tape Rules with BladeArmor™ coating are specifically identified by their labels. New, never used tape rules without the BladeArmor™ coating on the blade.

Tape Replacement Process

Stanley tape rules are inspected and tested before shipment and believed to be free from defects in workmanship and material. This information will help you to determine if a tape rule is defective and should be replaced under the Stanley® Proto® Unlimited Lifetime Warranty.

Conditions Not Covered

Tape rules indicating hard wear or showing damage from an accident or misuse should not be replaced free of charge. Do not needlessly lose the sale of a new tape rule by replacing one that is worn out or abused. The examples shown below are valid reasons to refuse free replacement. Customers requesting further explanation may call Customer Service at 1-800-800-TOOL.



Rusty Blade or Hook

Rust and corrosion on blade or hook indicates that the tape rule has been exposed to moisture for long periods.



Foreign Material on Blade or In Case

Foreign material coating the blade or contaminating the case interior will interfere with tape rule operation.



Torn or Damaged Blade

Blade torn by retracting at high speed, broken by being stepped on or accidentally cut by a power tool.



Worn Out Beyond Expected Life

Bare metal showing on the blade; excessive wear on case exterior indicates that the tape rule is worn out.



Mistreated or Abused

Broken parts, cracked cases, twisted or badly kinked blades indicate that the tape rule has been abused.

Mylar® is a registered trademark of DuPont Teijin Films.

Toll Free Customer Service Number: 1-800-800-TOOL
Customer Service FAX Number: 1-770-648-9108

Visit us at...
www.stanleyproto.com

STANLEY

Measuring

Hand Tools



STANLEY® FATMAX® XTREME™ BOX BEAM LEVELS

- Durable, box-beam construction made of aluminum is up to 5x stronger than other Stanley® levels.
- Solid block vials provide accuracy of 0.0005in/in (0.5mm/m).
- Dual machined leveling surfaces for improved accuracy.
- Rare earth magnets.
- Non-marring, shock-absorbing rubber end caps.

Product SKU No.	Type	Color	Vials	Hand Holes	Length		Box/Ctn
					in.	mm	
43-624		Gunmetal	3 (1 Level, 2 Plumb)	1	24	610	0/3
43-625	Magnetic	Silver	3 (1 Level, 2 Plumb)	1	24	610	0/3
43-648		Gunmetal	3 (1 Level, 2 Plumb)	2	48	1219	0/3
43-649	Magnetic	Silver	3 (1 Level, 2 Plumb)	2	48	1219	0/3
43-672		Gunmetal	3 (1 Level, 2 Plumb)	2	72	1829	0/3
43-679	Magnetic	Silver	3 (1 Level, 2 Plumb)	2	78	1981	0/3

STANLEY® FATMAX® BOX BEAM LEVELS

- Durable, box-beam construction made of aluminum.
- Solid block vials provide accuracy of 0.0005in/in (0.5mm/m).
- Dual machined leveling surfaces for improved accuracy.
- MaxEdge™ center vial provides bridge on one side of the center vial to allow end user to scribe a continuous line.
- Rare earth magnets.
- Non-marring, shock-absorbing rubber end caps.

Product SKU No.	Type	Color	Vials	Hand Holes	Length		Box/Ctn
					in.	mm	
43-524		Yellow	3 (1 Level, 2 Plumb)	2	24	610	0/6
43-525	Magnetic	Silver	3 (1 Level, 2 Plumb)	2	24	610	0/6
43-548		Yellow	3 (1 Level, 2 Plumb)	2	48	1219	0/3
43-549	Magnetic	Silver	3 (1 Level, 2 Plumb)	2	48	1219	0/3
43-572		Yellow	5 (2 Level, 3 Plumb)	2	72	1829	0/3

BRASSBOUND HARDWOOD LEVELS

- Durable, box-beam construction made of engineered hardwood.
- Dual bent vials provide accuracy of 0.001 in/in (1mm/m) and allows for top and bottom leveling applications.
- Glass vial covers for impact resistance and white plastic bezel to protect vials from moisture.

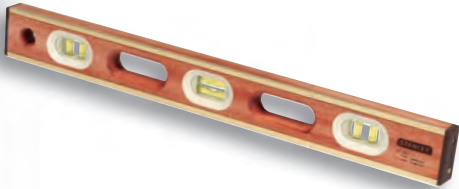
Product SKU No.	Type	Color	Vials	Hand Holes	Length		Box/Ctn
					in.	mm	
42-321		Natural	6 (2 Level, 4 Plumb)	2	24	610	0/3
42-347		Natural	6 (2 Level, 4 Plumb)	2	48	1219	0/3

STANLEY® PROLEVEL™ I-BEAM LEVELS

- Durable, I-beam construction made of aluminum.
- Vials provide accuracy of 0.001 in/in (1mm/m).
- Dual machined leveling surfaces (up to 48 in. length) for improved accuracy.
- Rare earth magnets.

Product SKU No.	Type	Color	Vials	Hand Holes	Length		Box/Ctn
					in.	mm	
43-024		Yellow	3 (1 Level, 2 Plumb)	1	24	610	0/6
43-124	Magnetic	Silver	3 (1 Level, 2 Plumb)	1	24	610	0/6
43-048		Yellow	3 (1 Level, 2 Plumb)	2	48	1219	0/3
43-148	Magnetic	Silver	3 (1 Level, 2 Plumb)	2	48	1219	0/3
43-072		Yellow	5 (2 Level, 3 Plumb)	4	72	1829	0/3
43-178	Magnetic	Silver	5 (2 Level, 3 Plumb)	4	78	1981	0/3

Layout Tools



Hand Tools

PRO I-BEAM LEVELS

- Durable, I-beam construction made of aluminum.
- Vials provide accuracy of 0.0015 in/in (1.5mm/m).
- Magnetic versions have full length magnetic strip to allow for hands free operation on metal surfaces.
- Pipe groove for use on rounded surfaces (only on non-magnetic versions).

Product SKU No.	Type	Color	Vials	Hand Holes	Length		Box/Ctn
					in.	mm	
42-240		Yellow	3 (1 Level, 2 Plumb)	0	24	610	0 / 6
42-244	Magnetic	Silver	3 (1 Level, 1 Plumb, 1 45°)	0	24	610	0 / 6
42-480		Yellow	3 (1 Level, 2 Plumb)	2	48	1219	0 / 3
42-486	Magnetic	Silver	3 (1 Level, 1 Plumb, 1 45°)	2	48	1219	0 / 3
42-720		Yellow	6 (3 Level, 3 Plumb)	4	72	1829	0 / 3
42-789	Magnetic	Silver	6 (3 Level, 3 Plumb)	4	78	1981	0 / 3



STANLEY® FATMAX® XTREME™ TORPEDO LEVEL

- Heavy-duty, die-cast aluminum body.
- Solid block vials provide accuracy of 0.0005 in/in (0.5mm/m).
- Machined leveling surface for improved accuracy.
- 180° rotating vial to duplicate angles.
- Rare earth magnets.
- Pipe groove for use on rounded surfaces.

Product SKU No.	Type	Color	Vials	Hand Holes	Length		Box/Ctn
					in.	mm	
43-609	Magnetic	Gunmetal	3 (1 Level, 1 Plumb, 1 180°)	2	9	229	6 / 12



SHOCK-RESISTANT TORPEDO LEVELS

- Heavy-duty aluminum frame and bi-material body with shock-absorbing rubber ends for strength and durability.
- Vials provide accuracy of 0.002 in/in (2mm/m).
- Magnetic strip to allow for hands free operation on metal surfaces.
- Lighted version with auto shutoff is designed for low-light locations.
- Pipe groove for use on rounded surfaces.

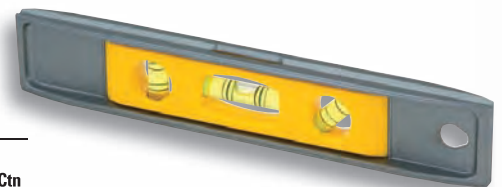
Product SKU No.	Type	Color	Vials	Hand Holes	Length		Box/Ctn
					in.	mm	
43-511	Magnetic	Yellow/Black	3 (1 Level, 1 Plumb, 1 45°)	2	9	229	6 / 36
43-512	Magnetic	Yellow/Black	3 (1 Level, 1 Plumb, 1 45°)	2	9	229	6 / 36



CAST ALUMINUM TORPEDO LEVEL

- Heavy-duty, cast aluminum frame.
- Vials provide accuracy of 0.002 in/in (2mm/m).
- Magnetic strip to allow for hands free operation on metal surfaces.
- Pipe groove for use on rounded surfaces.

Product SKU No.	Type	Color	Vials	Hand Holes	Length		Box/Ctn
					in.	mm	
42-465	Magnetic	Silver/Yellow	3 (1 Level, 1 Plumb, 1 45°)	1	9	229	6 / 36



Layout Tools

Hand Tools

Illumination



STANLEY® PERFORMANCE FLASHLIGHT - POCKET INSPECTOR

- Specially designed reflector provides a strong focused beam – 3W LED with 40 Lumens* of output.
- Heavy duty anodized aluminum with knurled grips.
- Runs on 2 AA batteries (not included).

Product SKU No.	O.A. Length		Box/Ctn
	in.	mm	
95-151	6-1/4	159	0 / 6



STANLEY® PERFORMANCE FLASHLIGHT - POCKET SECURITY

- Specially designed reflector provides a strong focused beam – 3W LED with 70 Lumens* of output.
- Heavy duty anodized aluminum with knurled grips.
- Runs on 3 AAA batteries (not included).

Product SKU No.	O.A. Length		Box/Ctn
	in.	mm	
95-152	4-7/8	124	0 / 6



STANLEY® PERFORMANCE FLASHLIGHT - PRO SECURITY

- Specially designed reflector provides a strong focused beam - 3W LED with 70 Lumens* of light output.
- Heavy duty anodized aluminum with knurled grips.
- Runs on 3 D batteries (not included).

Product SKU No.	O.A. Length		Box/Ctn
	in.	mm	
95-153	13	330	0 / 6



STANLEY® PERFORMANCE FLASHLIGHT - EMERGENCY

- Specially designed reflector provides a strong focused beam - 3W LED with 70 Lumens* of light output.
- Heavy duty anodized aluminum with knurled grips.
- Rear and front push button.
- Rechargeable Ni-MH battery.

Product SKU No.	O.A. Length		Box/Ctn
	in.	mm	
95-154	6-1/2	165	0 / 6



STANLEY® TRIPOD FLASHLIGHT – HIGH POWER

- High Power LED with 40 Lumens* of light output.
- Patented hands-free tripod design.
- 4 position rotating head.
- 369 Technology runs on 3, 6, or 9 AA batteries.

Product SKU No.	O.A. Length		Box/Ctn
	in.	mm	
95-146	11	279	2 / 6



STANLEY® TRIPOD FLASHLIGHT – RECHARGEABLE

- Illuminating lens technology with shatter proof lens - 3W LED with 70 Lumens* of light output.
- Patented hands-free tripod design.
- 8 Hr charging base and Wall unit gives 4 Hours continuous run time when fully charged.

Product SKU No.	O.A. Length		Box/Ctn
	in.	mm	
95-148	11	279	0 / 2

*Based on Average Test Values



Hand Tools

STANLEY® MAXLIFE™ 369™ TRIPOD FLASHLIGHT

- Innovative tripod design offers hands-free convenience.
- Adjustable head pivots allowing user to focus light at multiple angles.
- Durable, impact-resistant design with graphite ABS composite head and shatter-resistant polycarbonate lens.
- Simple 4 position switch lets you choose between Low, Medium, High or Off.
- Runs on 3, 6, or 9 AA batteries (not included).

Product SKU No.	O.A. Length		Box/Ctn
	in.	mm	
95-112	11	279	4 / 24



STANLEY® MAXLIFE™ 369™ TRIPOD FLASHLIGHT - CAMOUFLAGE FINISH

- Innovative tripod design offers hands-free convenience.
- Includes (3) color lenses that pop on/off: Blue (Glare free), Green (Hi-visibility for safety), and Red (Night vision).
- Adjustable head pivots allowing user to focus light at multiple angles.
- Durable, impact-resistant design with a graphite ABS composite head and shatter-resistant polycarbonate lens.
- Simple 4 position switch lets you choose between Low, Medium, High, or Off.
- Runs on 3, 6, or 9 AA batteries (not included).

Product SKU No.	O.A. Length		Box/Ctn
	in.	mm	
95-000	11	279	10 / 60



STANLEY® MAXLIFE™ MINI TRIPOD FLASHLIGHT

- Innovative, tripod design offers hands-free convenience.
- Adjustable head pivots allowing user to focus light at multiple angles.
- Durable, impact-resistant design with a graphite ABS composite head and shatter-resistant polycarbonate lens.
- Simple 4 position switch lets you choose between Low, Medium, High, or Off.
- Runs on 3 AAA batteries (not included).

Product SKU No.	O.A. Length		Box/Ctn
	in.	mm	
95-111	6	152	4 / 24



MINI TRIPOD FLASHLIGHT WITH KEYCHAIN

- Innovative tripod design offers hands-free convenience.
- Adjustable head pivots allowing user to focus light at multiple angles.
- Runs on 3 replaceable lithium button cell batteries (LR41) - included.

Product SKU No.	O.A. Length		Box/Ctn
	in.	mm	
95-113X	3-3/8"	86	10 / 60



Illumination

Hand Tools



STANLEY® DIE-CAST CHALK REEL

- Durable, heavy-duty die-cast metal case.
- Screw cap simplifies refilling.
- Chalk reel body design can be used as a plumb bob.

Product SKU No.	Contains	String Length		Box/Ctn
		Feet	Meters	
47-099	Chalk Reel	100	30	2 / 24



STANLEY® FATMAX® XTREME™ MARKER

- Permanent ink writes on wet and oily surfaces.
- Durable chisel tip writes both fine and thick lines.
- Bi-Material body is easy to grip.

Product SKU No.	Type	Marker	Ink	Box/Ctn
		Tip	Color	
47-314	2 Pack	Chisel	Black	12 / 48



STANLEY® MARKER

- Fast drying ink is permanent on most surfaces.
- Fine tip point.

Product SKU No.	Type	Marker	Ink	Box/Ctn
		Tip	Color	
47-316	2 Pack	Fine	Black	12 / 48

Layout Tools / Electronic Tools



STANLEY® INTELLIMEASURE® DISTANCE ESTIMATOR

- Ultrasonic distance estimator measures distances up to 40 feet.
- Large, easy-to-read LCD screen always displays last three measurements for quick reference.
- Intuitively designed toggle button features three measuring modes: length, area, and volume.
- Accurate measurements (+/-0.5%).
- Choose between English (in/ft, yds) or Metric (mm) modes.
- Automatically calculates area and volume.
- Manual addition mode for specialized calculations (i.e. perimeter).
- High-impact ABS housing.
- Automatic shut-off for longer battery life.
- Requires a 9 Volt battery (not included).

Product SKU No.	Measuring Distance	Box/Ctn
77-018	40'	2 / 8



STANLEY® FATMAX® STUD SENSOR 400

- One Pass™ stud center detection
- Auto Depth Selection up to 1-1/2"
- Detects and traces AC
- Audible Indicators

Product SKU No.	Box/Ctn
77-730	2 / 8



Hand Tools

KNIFE AND BLADE SELECTION GUIDE

			REPLACEMENT BLADES											
			APPLICATION SPECIFIC					UTILITY				HOOK		
Knives		Product SKU No.	PAPER UTILITY BLADE - 11-938	DRYWALL UTILITY BLADE - 11-937	ROOFING UTILITY BLADE - 11-939	SCORING BLADE - 11-942	CARTON/SAFETY UTILITY BLADE (ROUND POINT) - 11-987	LINOLEUM BLADE - 11-980	EXTRA HEAVY DUTY UTILITY BLADE - 11-931	HEAVY DUTY UTILITY BLADE - 11-921	REGULAR DUTY UTILITY BLADE - 11-911	MITEY-KNIFE® UTILITY BLADE - 11-031	LARGE HOOK BLADE - 11-983	REGULAR HOOK BLADE - 11-961
RETRACTABLE	Stanley® FatMax® Xtreme™ Retractable Blade Utility Knife	10-815	X	X	X		X		X	X	X		X	X
	Stanley® QuickSlide™ Utility Knife	10-810	X	X	X		X			X	X		X	X
	Stanley® QuickSlide™ 2 Knife	10-812	X	X	X		X			X	X		X	X
	Stanley® QuickSlide™ Sport Utility Knife	10-813	X	X	X		X			X	X		X	X
	Stanley® InstantChange™ Retractable Blade Utility Knife	10-788	X	X	X		X		X	X	X		X	X
	Stanley® QuickChange™ Retractable Blade Utility Knife	10-499	X	X	X		X		X	X	X		X	X
	Stanley® Self Retracting Safety Blade Utility Knife	10-189C	X	X	X		X		X	X	X		X	X
	Stanley® Retractable Blade Utility Knife	10-079	X	X	X		X		X	X	X		X	X
	Stanley® Classic 99® Retractable Blade Utility Knife	10-099 & 10-099B	X	X	X		X		X	X	X		X	X
	Stanley® Mitey-Knife® Retractable Pocket Knives	10-039 & 10-239										X		
FIXED	Stanley® FatMax® Xtreme™ Fixed Blade Utility Knife	10-816	X	X	X	X	X	X	X	X	X		X	X
	Stanley® Classic 199® Fixed Blade Utility Knife	10-209	X	X	X	X	X	X	X	X	X		X	X
PKT SNAP-OFF	Stanley® FatMax® Xtreme™ Snap-Off Cartridge Knife	10-817	11-325											
	Stanley® FatMax® Snap-Off Knives	10-411 & 10-421	11-300 (10-411 only), 11-301 & 11-318 (10-421 only)											
	Stanley® DynaGrip® Snap-Off Knife	10-425	11-325											
	Stanley® DynaGrip® Snap-Off Cartridge Knife	10-480	11-301, 11-318											
	Stanley® Quick-Point™ Snap-Off Knives	10-150 & 10-151	11-300 (10-150 only), 11-301 & 11-318 (10-151 only)											
PKT	Stanley® Pocket Knife	10-049	11-040, 11-041											

Knives & Blades

Hand Tools

Knives & Blades



STANLEY® FATMAX® XTREME™ RETRACTABLE BLADE UTILITY KNIFE

- Heavy duty all-metal knife body construction.
- Large thumb-dial opens knife body for quick blade change - No Tools Required.
- Magnetic nose holds blade in place during blade change.
- Adjustable thumb-dial locking wheel holds blade firmly in place.
- Blade retention clip secures spare blades in storage area.
- Utility Blades Included (11-921): 15.
- Retractable Blade Positions: 5.
- Works with these standard Stanley® utility blades (11-911, 11-921, 11-931, 11-961, 11-983).

Product SKU No.	Body Color	Length		Box/Ctn
		in.	mm	
10-815	Bright Aluminum	7-3/4	197	6 / 36



STANLEY® QUICKSLIDE™ UTILITY KNIFE

- Durable, all-metal knife body construction.
- Quick change blade tab - No Tools Required.
- True one-handed open / close.
- Utility Blades Included (11-921): 1.
- Retractable Blade Positions: 1.
- Works with these standard Stanley® utility blades (11-911, 11-921, 11-961, 11-983).

Product SKU No.	Body Color	Length		Box/Ctn
		in.	mm	
10-810	Silver / Black	5-1/4	133	6 / 36



10-812 – QUICKSLIDE™ 2 KNIFE

- Holds standard utility blades
- Top Mounted, Zinc Slider Button for Durability
- Easier Blade Change
- Compact and ergonomically designed
- Works with these standard Stanley® utility blades (11-911, 11-921, 11-961, 11-983).

Product SKU No.	Body Color	Length		Box/Ctn
		in.	mm	
10-812	Grey	5-1/4	133	6 / 36



10-813 – SPORT QUICKSLIDE™ UTILITY KNIFE

- Great for multi-purpose cutting, camping and outdoor activities
- 3" serrated sport blade
- Integrated Utility Knife holds standard utility blades
- Spine lock button for ease & security
- Easy blade change
- Works with these standard Stanley® utility blades (11-911, 11-921, 11-961, 11-983).

Product SKU No.	Body Color	Length		Box/Ctn
		in.	mm	
10-813	Grey	6	152	2 / 6



STANLEY® INSTANTCHANGE™ RETRACTABLE BLADE UTILITY KNIFE

- Durable, all-metal knife body construction.
- Quick one-button blade change - No Tools Required.
- Interlocking nose design helps secure blade and helps prevent body separation.
- Integrated string cutter when blade is retracted.
- Swing-out blade storage for easy blade access.
- Utility Blades Included (11-921): 3.
- Retractable Blade Positions: 3.
- Works with these standard Stanley® utility blades (11-911, 11-921, 11-931, 11-961, 11-983).

Product SKU No.	Body Color	Length		Box/Ctn
		in.	mm	
10-788	Grey / Black	6-1/2	165	6 / 36



Hand Tools

STANLEY® QUICKCHANGE™ RETRACTABLE BLADE UTILITY KNIFE

- Durable, all-metal knife body construction.
- Quick one-button blade change - No Tools Required.
- Interlocking nose design helps secure blade and helps prevent body separation.
- Integrated string cutter when blade is retracted.
- Swing-out blade storage for easy blade access.
- Utility Blades Included (11-921): 3.
- Retractable Blade Positions: 3.
- Works with these standard Stanley® utility blades (11-911, 11-921, 11-931, 11-961, 11-983).

Product SKU No.	Body Color	Length		Box/Ctn
		in.	mm	
10-499	Grey	6-1/2	165	6 / 36

SELF-RETRACTING SAFETY BLADE UTILITY KNIFE

- Durable, all-metal knife body construction.
- Machine screw firmly holds knife body together - Screwdriver required for blade change.
- Interlocking nose design helps secure blade and helps prevent body separation.
- Auto-retracting blade: spring-loaded. Retracts when slide button is released.
- Utility Blades Included (11-987): 1.
- Works with these standard Stanley® utility blades (11-911, 11-921, 11-931, 11-961, 11-983).
- Recommended for use with 11-987 Round Point Carton Utility Blades.

Product SKU No.	Body Color	Length		Box/Ctn
		in.	mm	
10-189C (Carded)	Orange	6	152	6 / 36

RETRACTABLE BLADE UTILITY KNIFE

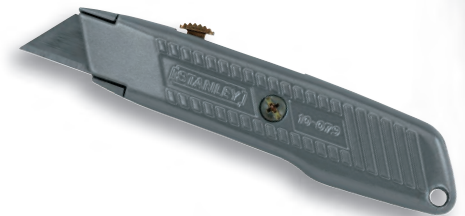
- Durable, all-metal knife body construction.
- Machine screw firmly holds knife body together - Screwdriver required for blade change.
- Interlocking nose design helps secure blade and helps prevent body separation.
- Utility Blades Included (11-921): 3.
- Retractable Blade Positions: 3.
- Works with these standard Stanley® utility blades (11-911, 11-921, 11-931, 11-961, 11-983).

Product SKU No.	Body Color	Length		Box/Ctn
		in.	mm	
10-079	Grey	6	152	6 / 36

STANLEY® CLASSIC 99® RETRACTABLE BLADE UTILITY KNIFE

- Durable, all-metal knife body construction.
- Machine screw firmly holds knife body together - Screwdriver required for blade change.
- Interlocking nose design helps secure blade and helps prevent body separation.
- Utility Blades Included (11-921): 3.
- Retractable Blade Positions: 5.
- Works with these standard Stanley® utility blades (11-911, 11-921, 11-931, 11-961, 11-983).

Product SKU No.	Body Color	Length		Box/Ctn
		in.	mm	
10-099	Grey	6	152	6 / 36
10-099B (Bulk)	Grey	6	152	0 / 96



Knives & Blades

Hand Tools

Knives & Blades



STANLEY® MITEY-KNIFE® POCKET KNIFE

- Durable, all-metal knife body construction.
- Utility Blades Included (11-031): 2.
- Retractable Blade Positions: 2.
- Works with this Stanley® utility blade (11-031).

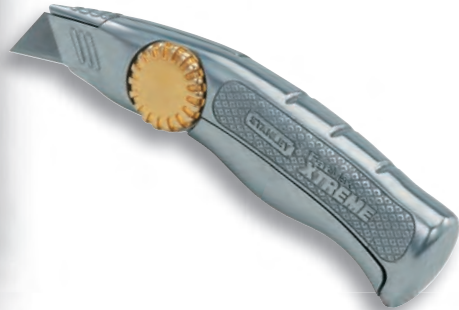
Product	Body Color	Length		Box/Ctn
		in.	mm	
SKU No. 10-239	Bright Aluminum	3	76	12 / 144



STANLEY® MITEY-KNIFE® POCKET KNIFE

- High impact, black ABS body.
- Utility Blades Included (11-031): 2.
- Retractable Blade Positions: 2.
- Works with this Stanley® utility blade (11-031).

Product	Body Color	Length		Box/Ctn
		in.	mm	
SKU No. 10-039	Black	3	76	12 / 144



STANLEY® FATMAX® XTREME™ FIXED BLADE UTILITY KNIFE

- Heavy duty all-metal knife body construction.
- Large thumb-dial opens knife body for quick blade change - No Tools Required.
- Magnetic nose holds blade in place during blade change.
- Adjustable thumb-dial locking wheel holds blade firmly in place.
- Utility Blades Included (11-921): 15.
- Fixed Blade Positions: 1.
- Works with these standard Stanley® utility blades (11-911, 11-921, 11-931, 11-961, 11-983).
- Works with Scoring (11-942) and Linoleum (11-980) blades.

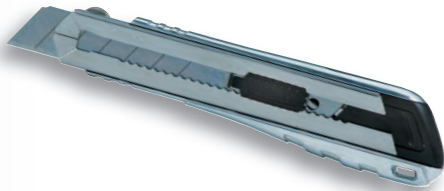
Product	Body Color	Length		Box/Ctn
		in.	mm	
SKU No. 10-816	Bright Aluminum	7-3/4	197	6 / 36



STANLEY® CLASSIC 199® FIXED BLADE UTILITY KNIFE

- Durable, all-metal zinc knife body construction.
- Machine screw firmly holds knife body together - Screwdriver required for blade change.
- Utility Blades Included (11-921): 3.
- Fixed Blade Positions: 1.
- Works with these standard Stanley® utility blades (11-911, 11-921, 11-931, 11-961, 11-983).
- Works with Scoring (11-942) and Linoleum (11-980) blades.

Product	Body Color	Length		Box/Ctn
		in.	mm	
SKU No. 10-209	Grey	5-1/2	140	6 / 36



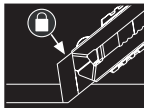
STANLEY® FATMAX® XTREME™ SNAP-OFF CARTRIDGE KNIFE

- Heavy duty all-metal knife body construction.
- Rigid stainless steel barrel provides smooth action and corrosion resistance.
- Smooth slider mechanism features an audible "click" and is self-locking for security.
- Safety machine screw allows for locking blade in place for added blade security and heavy-duty applications.
- Removable blade snapper included in cap of knife.
- Blade cartridge automatically slides new blade into position after old blade is removed.
- Works with this standard Stanley® snap-off blade (11-325).
- Snap-Off Blades Included (11-325): 4.
- Total Cutting Points: 28.

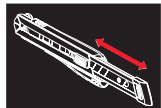
Product	Body Color	Size		Length		Box/Ctn
		mm	in.	mm	mm	
SKU No. 10-817	Bright Aluminum	25	8	203		6 / 36



Built In Blade Snapper



Screw Allows For Locking Blade



Automatic Reload Blade Cartridge



Hand Tools

STANLEY® FATMAX® SNAP-OFF KNIVES

- Heavy duty all-metal knife body construction.
- Rigid stainless steel barrel provides smooth action and corrosion resistance.
- Smooth slider mechanism features an audible "click" and is self-locking for security.
- Removable blade snapper included in cap of knife.

10-411

- Works with this standard Stanley® snap-off blade (11-300).
- Snap-Off Blade Included (11-300): 1.
- Total Cutting Points: 13.

10-421

- Works with this standard Stanley® snap-off blade (11-301).
- Snap-Off Blade Included (11-301): 1.
- Total Cutting Points: 8.

Product SKU No.	Body Color	Size	Length		Box/Ctn
			in.	mm	
10-411	Silver	9	5-1/4	133	6 / 72
10-421	Silver	18	6-1/4	159	6 / 72



STANLEY
FatMax

Built In Blade Snapper

STANLEY® DYNAGRIP® SNAP-OFF KNIFE

- High impact, yellow ABS body with soft-grip panels.
- Rigid stainless steel barrel provides smooth action and corrosion resistance.
- Safety machine screw clamp secures blade in place for added blade security.
- Works with this standard Stanley® snap-off blade (11-325).
- Snap-Off Blade Included (11-325): 1.
- Total Cutting Points: 7.

Product SKU No.	Body Color	Size	Length		Box/Ctn
			in.	mm	
10-425	Yellow / Black	25	7	178	6 / 72



STANLEY® DYNAGRIP® SNAP-OFF CARTRIDGE KNIFE

- High impact, yellow ABS body with soft-grip panels.
- Rigid stainless steel barrel provides smooth action and corrosion resistance.
- Smooth slider mechanism features an audible "click" and is self-locking for security.
- Safety machine screw allows for locking blade in place for added blade security and heavy-duty applications.
- Blade cartridge automatically slides new blade into position after old blade is removed.
- Works with this standard Stanley® snap-off blade (11-301).
- Snap-Off Blades Included (11-301): 6.
- Total Cutting Points: 48.

Product SKU No.	Body Color	Size	Length		Box/Ctn
			in.	mm	
10-480	Yellow / Black	18	6-3/4	171	6 / 36



POCKET KNIFE

- Powder coated, epoxy handle.
- Blade folds into handle for safe storage.
- Blade can be replaced.
- Safety blade lock.
- Blade Included (11-040): 1.
- Works these with Stanley® blades (11-040, 11-041).

Product SKU No.	Body Color	Size	Length		Box/Ctn
			in.	mm	
10-049	6	152	4-1/4	108	6 / 72



Hand Tools

Knives & Blades



STANLEY® QUICK-POINT™ SNAP-OFF KNIVES

- Smooth slider mechanism features an audible "click" and is self-locking for security.
- Removable blade snapper included in cap of knife.

10-150

- Works with this standard Stanley® snap-off blade (11-300).
- Snap-Off Blade Included (11-300): 1.
- Total Cutting Points: 13.

10-151

- Works with this standard Stanley® snap-off blade (11-301).
- Snap-Off Blade Included (11-301): 1.
- Total Cutting Points: 8.

Product	SKU No.	Body Color	Size	Length		Box/Ctn
				in.	mm	
10-150		Yellow / Black	9	5-1/8	206	6 / 72
10-151		Yellow / Black	18	6-1/2	165	6 / 72



EXTRA HEAVY DUTY UTILITY BLADES

- Blade made of high carbon steel.
- Precision honed edge.
- Blade is made thicker to cut thick/dense materials.

Product	SKU No.	Blades Per Pack	Type	Length		Blade Thickness		Box/Ctn
				in.	mm	in.	mm	
11-931		5	Carded	2-7/16	62	0.035	0.889	10 / 200



HEAVY DUTY UTILITY BLADES

- Blade made of high carbon steel.
- Precision honed edge.
- Blade is made for general purpose cutting.

Product	SKU No.	Blades Per Pack	Type	Length		Blade Thickness		Box/Ctn
				in.	mm	in.	mm	
11-921		5	Carded	2-7/16	62	0.024	0.610	10 / 200
11-921A		100	Dispenser/Carded	2-7/16	62	0.024	0.610	6 / 24
11-921B		400	Box	2-7/16	62	0.024	0.610	0 / 10
11-921H		10	Dispenser/Box	2-7/16	62	0.024	0.610	0 / 24
11-921L		50	Dispenser/Carded	2-7/16	62	0.024	0.610	6 / 24
11-921T		10	Dispenser/Carded	2-7/16	62	0.024	0.610	10 / 100



REGULAR DUTY UTILITY BLADES

- Blade made of high carbon steel.
- Precision honed edge.
- Blade is made for light sheet materials, paper, and cardboard.

Product	SKU No.	Blades Per Pack	Type	Length		Blade Thickness		Box/Ctn
				in.	mm	in.	mm	
11-911		5	Carded	2	51	0.017	0.432	10 / 200
11-911A		100	Dispenser/Carded	2	51	0.017	0.432	6 / 24



SAFETY/CARTON ROUND POINT UTILITY BLADES

- Blade made of high carbon steel.
- Precision honed edge.
- Rounded edges reduce risk of accidental cuts.
- Blade is used in applications where safety is a concern and for preventing damage to carton contents when opening boxes.

Product	SKU No.	Blades Per Pack	Type	Length		Blade Thickness		Box/Ctn
				in.	mm	in.	mm	
11-987		5	Carded	2-3/16	56	0.024	0.610	10 / 200
11-988		100	Dispenser/Carded	2-3/16	56	0.024	0.610	6 / 24



Hand Tools

STANLEY® MITEY-KNIFE® BLADE

- Blade made of high carbon steel.
- Precision honed edge.
- Blade fits Mitey-Knife® products.

Product SKU No.	Blades Per Pack	Type	Length		Blade Thickness		Box/Ctn
			in.	mm	in.	mm	
11-031	3	Carded	1-1/8	29	0.017	0.432	10 / 60



REGULAR HOOK BLADES

- Blade made of high carbon steel.
- Blade shape helps prevent damage to surface beneath the material being cut.
- Blade is used for cutting and trimming roofing materials, linoleum, carpet, fabric and sheet materials.

Product SKU No.	Blades Per Pack	Type	Length		Blade Thickness		Box/Ctn
			in.	mm	in.	mm	
11-961	5	Carded	2-1/16	52	0.024	0.610	10 / 200
11-961A	100	Dispenser/Carded	2-1/16	52	0.024	0.610	6 / 24



STANLEY® HEAVY DUTY QUICK-POINT™ SNAP-OFF BLADE 25MM

- Blade made of high carbon steel.
- Blade sections snap-off providing fresh, sharp cutting points.
- Cutting points per blade: 7.

Product SKU No.	Blades Per Pack	Type	Length		Blade Thickness		Box/Ctn
			in.	mm	in.	mm	
11-325T	10	Dispenser/Carded	5-7/16	138	0.027	0.686	10 / 100



STANLEY® QUICK-POINT™ SNAP-OFF BLADES 18MM

- Blade made of high carbon steel.
- Blade sections snap-off providing fresh, sharp cutting points.
- Cutting points per blade: 8.

Product SKU No.	Blades Per Pack	Type	Length		Blade Thickness		Box/Ctn
			in.	mm	in.	mm	
11-301	3	Carded	4-1/4	108	0.020	0.508	10 / 50
11-301L	50	Dispenser/Carded	4-1/4	108	0.020	0.508	4 / 24
11-301T	10	Dispenser/Carded	4-1/4	108	0.020	0.508	10 / 100



11-301T

STANLEY® QUICK-POINT™ SNAP-OFF BLADES 9MM

- Blade made of high carbon steel.
- Blade sections snap-off providing fresh, sharp cutting points.
- Cutting points per blade: 13.

Product SKU No.	Blades Per Pack	Type	Length		Blade Thickness		Box/Ctn
			in.	mm	in.	mm	
11-300	3	Carded	3-1/4	83	0.017	0.432	10 / 50
11-300T	10	Dispenser/Carded	3-1/4	83	0.017	0.432	10 / 100



SHEEPFOOT BLADE

- Blade made of cutlery stainless steel.
- Blade used for heavy duty cutting and carving.

Product SKU No.	Blades Per Pack	Type	Length		Blade Thickness		Box/Ctn
			in.	mm	in.	mm	
11-040	1	Carded	2-9/16	65	0.040	1.02	10 / 60



Knives & Blades

Hand Tools



UTILITY BLADE

- Blade made of cutlery stainless steel.
- Blade used for fine cutting.

Product SKU No.	Blades Per Pack	Type	Length		Blade Thickness		Box/Ctn
			in.	mm	in.	mm	
11-041	1	Carded	2-9/16	65	0.040	1.02	10 / 100



11-515



28-510

RAZOR BLADES

- Blade made of high carbon steel with steel backing.
- Blade fits standard razor blade tools.

Product SKU No.	Blades Per Pack	Type	Length		Blade Thickness		Box/Ctn
			in.	mm	in.	mm	
11-515	100	Box	1-1/2	38	0.009	0.229	0 / 50
28-510	10	Dispenser/Carded	1-1/2	38	0.009	0.229	10 / 100



BLADE DISPOSAL CONTAINER

- High impact, puncture resistant container.
- Snap on lid locks tight for safety and is tethered to the container.
- Container can be placed on a flat surface or fixed to a wall with the metal rack.

Product SKU No.	Description	Box/Ctn
11-080	Blade Disposal Container	0 / 40
11-085	Metal Wire Rack for Container	0 / 18
11-081	Blade Disposal Container and Wire Rack	0 / 1



Hand Tools

STANLEY® FATMAX® PVC SAW

- Saw blade made of steel with induction-hardened teeth for long lasting sharpness.
- SharpTooth™ Saw Technology uses an aggressive three sided tooth design that gives three cutting surfaces to cut 50% faster than conventional Stanley® handsaws.
- Lacquered blade for corrosion protection.
- Unique tooth design reduces burring.
- Ergonomically designed handle is made out of high-impact polypropylene and a textured rubber grip over mold to provide comfort and a slip resistant grip.

Product SKU No.	O.A. Length		Blade Length		Points per in.	Box/Ctn
	in.	mm	in.	mm		
17-206	16-1/4	413	12	305	12	4 / 24

STANLEY® FATMAX® HIGH TENSION HACKSAW

- Durable, one-piece metal frame design for high tension of up to 330 lbs.
- Blade can be positioned either at a 45° or 90° angle.
- Telescoping tension lever provides extra tension and release control, as well as provides access to thumb dial to adjust tension.
- Accepts 12" blades only.
- Hacksaw Blade Included (15-631): 1.

Product SKU No.	O.A. Length		Throat Depth		Box/Ctn
	in.	mm	in.	mm	
20-531	16-7/8	429	4-3/4	121	2 / 4

HIGH TENSION HACKSAW

- Heavy duty metal frame design holds blade up to 32,000 psi.
- Blade can be positioned either at a 45° or 90° angle.
- Blade storage is integrated into frame.
- Quick release blade changing mechanism in handle maintains tension setting.
- "T" rod allows user to adjust tension on blade within handle.
- Accepts 12" blades only.
- Hacksaw Blade Included (15-631): 1.

Product SKU No.	O.A. Length		Throat Depth		Box/Ctn
	in.	mm	in.	mm	
15-113	16	406	4-1/2	114	2 / 12

HIGH TENSION LOW PROFILE HACKSAW

- Durable, one-piece metal frame design for strength and durability.
- Unique arc shaped frame enables cutting in hard to reach areas.
- Blade can be positioned either at a 45° or 90° angle.
- Contoured handle for comfortable use.
- High tension knob makes blade tension adjustment easy.
- Accepts 12" blades only.
- Hacksaw Blade Included (15-631): 1.

Product SKU No.	O.A. Length		Throat Depth		Box/Ctn
	in.	mm	in.	mm	
20-001	16-1/2	419	4	102	0 / 4

ADJUSTABLE HACKSAW WITH RUBBER GRIP

- Durable, steel frame body.
- Handle has rubber over mold for comfort and to provide a slip resistant grip.
- Safety clips are provided over blade pins to prevent accidental disengaging of the blade.
- Blade rotates to four different positions.
- Frame is adjustable to fit 8", 10", and 12" blades.
- Hacksaw Blade Included (15-904): 1.

Product SKU No.	O.A. Length		Throat Depth		Box/Ctn
	in.	mm	in.	mm	
15-265	17	432	3-3/4	95	0 / 6

STANLEY
FatMax



STANLEY
FatMax



Saws



Hand Tools

Saws



STANLEY
FatMax



15-410

15-412

METAL MINI HACKSAW

- Durable, one-piece metal body.
- Handle covers blade to protect end users hand.
- Hacksaw Blade Included (15-628): 1.

Product SKU No.	O.A. Length		Box/Ctn
	in.	mm	
15-809	10-3/4	273	6 / 36

PLASTIC MINI HACKSAW

- Durable, high impact polypropylene body .
- Handle covers blade to protect end users hand.
- Hacksaw Blade Included (15-904): 1.

Product SKU No.	O.A. Length		Box/Ctn
	in.	mm	
20-807	10-1/2	267	6 / 36

STANLEY® FATMAX® JAB SAW

- Jab saw blade made of steel.
- Lacquered blade for corrosion protection.
- SharpTooth™ Saw Technology uses an aggressive three sided tooth design that gives three cutting surfaces to cut 50% faster than conventional Stanley® handsaws.
- Sharpened tip to easily punch through drywall.
- Ergonomically designed handle is made out of high impact polypropylene and a textured rubber grip over mold to provide comfort and a slip resistant grip.

Product SKU No.	O.A. Length		Blade Length		Points per in.	Box/Ctn
	in.	mm	in.	mm		
20-556	11-3/4	299	6-1/4	159	9	6 / 36

STANLEY® FATMAX® MULTI-PURPOSE SAW

- Saw blades made of steel.
- Lacquered / coated blades for corrosion protection.
- Ergonomically designed handle is made with glass filled, high strength nylon to support six different blade positions.
- Textured rubber over mold on handle provides comfort and a slip resistant grip.
- No tools required for blade change.
- Turn knob allows end user to conveniently store all three blades on handle when not in use.
- 10" Universal blade cuts through tree limbs, 2 x 4's, and plastic pipes on the pull stroke.
- 8" Compass saw blade carves patterns and shapes out of wood.
- 6" Metal cutting blade cuts through metal pipes and rods.
- Multi-purpose Blades Included: 3.

Product SKU No.	Blade Contents	Points per in.	Box/Ctn
20-092	3 Blades		0 / 6
	Universal Blade – 10"	12	
	Compass Saw Blade – 8"	10	
	Metal Cutting Blade – 6"	25	

CARBIDE GRIT BLADES

- Tungsten carbide particles enable blade to cut on both forward and reverse strokes.
- Makes thin straight cuts in ceramic, hardened steel, cast iron, and masonry.
- Fits standard hacksaw frames.

Product SKU No.	Blade Per Pack	Type	Length		Box/Ctn
			in.	mm	
15-410 (Rod Saw)	1	Carded	10	254	10 / 100
15-412 (Hacksaw Blade)	1	Carded	12	305	10 / 100



Hand Tools

BI-METAL HACKSAW BLADES

- Combines the flexibility of carbon steel backs with the cutting performance of high speed steel cutting edge.
- Coated blade for corrosion protection.
- Cuts most metals including unhardened tool steel and stainless steel.

Product SKU No.	Blade		Length		Teeth	Box/Ctn
	Per Pack	Type	in.	mm	Per Inch	
15-628	1	Carded	10	254	24	10 / 100
15-632	1	Carded	12	305	18	10 / 100
15-631	1	Carded	12	305	24	10 / 100
15-630	1	Carded	12	305	32	10 / 100
15-612	10	Carded	12	305	18	5 / 50
15-613	10	Carded	12	305	24	5 / 50
15-614	10	Carded	12	305	32	5 / 50

HIGH SPEED HACKSAW BLADES

- Flexible, high speed steel blade.
- Coated blade for corrosion protection.
- Cuts most metals including unhardened tool steel and stainless steel.

Product SKU No.	Blade		Length		Teeth	Box/Ctn
	Per Pack	Type	in.	mm	Per Inch	
15-808A	1	Carded	10	254	18	10 / 100
15-804A	1	Carded	10	254	24	10 / 100
15-802A	1	Carded	10	254	32	10 / 100
15-828A	1	Carded	12	305	18	10 / 100
15-824A	1	Carded	12	305	24	10 / 100
15-822A	1	Carded	12	305	32	10 / 100

Product SKU No.	Blade Contents	Blade Quantity	Box/Ctn
20-027	4 Blades		5 / 30
	15-828A – 12" x 18TPI	1	
	15-824A – 12" x 24TPI	2	
	15-822A – 12" x 32TPI	1	

CARBON STEEL HACKSAW BLADES

- Flexible, high carbon steel blade.
- Coated blade for corrosion protection.
- Cuts mild steel, cast iron, aluminum, and copper.

Product SKU No.	Blade		Length		Teeth	Box/Ctn
	Per Pack	Type	in.	mm	Per Inch	
15-908A	2	Carded	10	254	18	10 / 100
15-904A	2	Carded	10	254	24	10 / 100
15-902A	2	Carded	10	254	32	10 / 100
15-928A	2	Carded	12	305	18	10 / 100
15-924A	2	Carded	12	305	24	10 / 100
15-922A	2	Carded	12	305	32	10 / 100



Saws

Hand Tools



Hammers

STANLEY® FATMAX® XTREME™ ANTIVIBE® HAMMERS

- Forged, one-piece steel construction for increased strength and durability.
- Patent pending torsion control grip technology reduces the effects of torque on wrists and elbows.
- Patented tuning fork design helps reduce harmful vibration that can cause wrist and arm injuries.
- Magnetic nail start feature for extended reach and one-handed nailing capability.
- Rim tempered face reduces incidences of chipping or spalling.
- Molded, textured rubber grip to increase comfort and performance.
- Precision balanced.

Product SKU No.	O.A. Length		Head Length		Face Diameter		Head Weight		Box/Ctn
	in.	mm	in.	mm	in.	mm	oz.	grams	
Nailing Hammers									
51-162 Curve Claw	13-1/2	343	5	127	1-5/32	29	16	454	0 / 4
51-163 Rip Claw	13-1/2	343	5-1/2	140	1-5/32	29	16	454	0 / 4
Framing Hammers									
51-166* Rip Claw	16	406	6	152	1-9/32	33	20	567	0 / 2
51-167* Rip Claw	16	406	6	152	1-19/64	33	22	624	0 / 2
51-168* Rip Claw	16	406	6	152	1-5/16	33	24	680	0 / 2
51-169* Rip Claw	16	406	6-1/4	159	1-3/8	35	28	794	0 / 2
51-170 Rip Claw	16	406	6	152	1-9/32	33	20	567	0 / 2
51-177 Rip Claw	16	406	6	152	1-19/64	33	22	624	0 / 2
51-181 Rip Claw	16	406	6-1/4	159	1-3/8	35	28	794	0 / 2

* Checker face design

JACKETED GRAPHITE NAILING HAMMERS

- Forged and heat-treated head for increased durability.
- Fully polished head.
- Jacketed graphite handle adds strength and durability, while minimizing shock.
- Patented head-to-handle assembly.
- Rim tempered face reduces incidences of chipping or spalling.
- Molded, textured rubber grip to increase comfort and performance.
- Flared end on grip helps to prevent hammer from slipping out of user's hand.

Product SKU No.	O.A. Length		Head Length		Face Diameter		Head Weight		Box/Ctn
	in.	mm	in.	mm	in.	mm	oz.	grams	
51-505 Curve Claw	13	330	5-1/4	133	1-3/16	30	16	454	0 / 4
51-506 Rip Claw	13	330	5-3/4	146	1-3/16	30	16	454	0 / 4
51-507 Curve Claw	13	330	5-1/4	133	1-19/64	33	20	567	0 / 4
51-508 Rip Claw	13	330	6	152	1-19/64	33	20	567	0 / 4

HICKORY HANDLE NAILING HAMMERS

- Forged and heat-treated head for increased durability.
- Black finish head with polished face.
- Traditional, high quality hickory handle.
- Double wedge head-to-handle assembly for extremely secure fit.
- Rim tempered face reduces incidences of chipping or spalling.

Product SKU No.	O.A. Length		Head Length		Face Diameter		Head Weight		Box/Ctn
	in.	mm	in.	mm	in.	mm	oz.	grams	
51-613 Curve Claw	11-1/2	292	4-1/4	108	29/32	23	7	198	0 / 6
51-713 Curve Claw	13-1/4	337	5-3/8	137	1-9/64	29	13	369	0 / 6
51-616 Curve Claw	13-1/4	337	5-1/2	140	1-11/64	30	16	454	0 / 6
51-716 Rip Claw	13-1/4	337	5-3/4	146	1-11/64	30	16	454	0 / 6



Hand Tools

STANLEY® FATMAX® ANTIVIBE® BALL PEIN HAMMERS

- Forged, one-piece steel construction for increased strength and durability.
- Patented tuning fork design helps reduce harmful vibration that can cause wrist and arm injuries.
- Rim tempered face reduces incidences of chipping or spalling.

Product SKU No.	O.A. Length		Head Length		Face Diameter		Ball Pein Diameter		Head Weight		Box/Ctn
	in.	mm	in.	mm	in.	mm	in.	mm	oz.	grams	
54-144	11	279	3-1/8	79	1	25	1	25	8	227	4 / 24
54-145	12-1/4	311	3-1/2	89	1-1/8	29	1-1/8	29	12	340	4 / 24
54-146	13	330	4	102	1-5/16	33	1-1/4	32	16	454	4 / 24
54-147	14	356	4-5/16	110	1-7/16	37	1-5/16	33	24	680	2 / 12
54-148	15	381	4-13/16	122	1-9/16	40	13/16	21	32	907	2 / 12

JACKETED GRAPHITE BALL PEIN HAMMERS

- Forged and heat-treated head for increased durability.
- Jacketed graphite handle adds strength and durability, while minimizing shock.
- Rim tempered face reduces incidences of chipping or spalling.

Product SKU No.	O.A. Length		Head Length		Face Diameter		Ball Pein Diameter		Head Weight		Box/Ctn
	in.	mm	in.	mm	in.	mm	in.	mm	oz.	grams	
54-708	11-3/4	298	3-7/16	87	1-3/64	27	57/64	23	8	227	0 / 4
54-712	11-3/4	298	3-3/4	95	1-11/64	30	63/64	25	12	340	0 / 4
54-716	12-3/4	324	4-1/8	105	1-9/32	33	1-3/32	28	16	454	0 / 4
54-724	15	381	4-3/4	121	1-33/64	38	1-7/32	31	24	680	0 / 4
54-732	15	381	5	127	1-11/16	43	1-13/32	36	32	907	0 / 4

HICKORY HANDLE BALL PEIN HAMMERS

- Forged and heat-treated head for increased durability.
- Traditional, high quality hickory handle.
- Rim tempered face reduces incidences of chipping or spalling.

Product SKU No.	O.A. Length		Head Length		Face Diameter		Ball Pein Diameter		Head Weight		Box/Ctn
	in.	mm	in.	mm	in.	mm	in.	mm	oz.	grams	
54-004*	11	280	2-5/8	67	55/64	22	45/64	18	4	113	6 / 24
54-008	12-3/8	314	3-3/8	86	1-5/64	27	57/64	23	8	227	0 / 6
54-012	13	330	3-3/4	95	1-3/16	30	63/64	25	12	340	0 / 6
54-016	14	356	4-1/8	105	1-9/32	33	1-5/64	27	16	454	0 / 6
54-024	15-1/4	387	4-3/4	121	1-9/16	40	1-7/32	31	24	680	0 / 6
54-032	15-7/8	403	5	127	1-45/64	43	1-13/32	36	32	907	0 / 4
54-040	16-3/8	416	5-1/4	133	1-55/64	47	1-23/64	35	40	1134	0 / 4
54-048	16-3/8	416	5-1/2	140	2	51	1-35/64	39	48	1361	4 / 12

* Does not have a rim tempered face or patented head-to-handle assembly

STANLEY® FATMAX® ANTIVIBE® ENGINEERING HAMMER

- Forged, one-piece steel construction is heat treated and tempered for increased strength and durability.
- Patented tuning fork design helps reduce harmful vibration that can cause wrist and arm injuries.

Product SKU No.	O.A. Length		Head Length		Face Widths		Head Weight		Box/Ctn
	in.	mm	in.	mm	in.	mm	lbs.	kg	
56-004	15	381	5	127	1-39/64	41	3	1.36	0 / 4



Hammers



Hand Tools

Hammers



JACKETED FIBERGLASS ENGINEERING HAMMERS

- Forged head is heat-treated and tempered for increased durability.
- Jacketed, hi-visibility yellow fiberglass handle adds strength and durability.

Product SKU No.	O.A. Length		Head Length		Face Widths		Head Weight		Box/Ctn
	in.	mm	in.	mm	in.	mm	lbs.	kg	
56-202	13-3/4	349	4-1/4	108	1-21/32	42	2.5	1.13	0 / 4
56-204	14	356	4-7/8	124	1-29/32	48	4.0	1.81	0 / 4

HICKORY HANDLE ENGINEERING HAMMERS

- Forged head is heat-treated and tempered for increased durability.
- Traditional, high quality hickory handle.

Product SKU No.	O.A. Length		Head Length		Face Widths		Head Weight		Box/Ctn
	in.	mm	in.	mm	in.	mm	lbs.	kg	
56-803	13-1/2	343	4-3/8	111	1-3/4	44	3	1.36	0 / 4
56-804	15-3/4	400	4-7/8	124	1-29/32	48	4	1.81	0 / 4

STANLEY® FATMAX® ANTIVIBE® BLACKSMITH HAMMER

- Forged, one-piece steel construction is heat treated and tempered for increased strength and durability.
- Patented tuning fork design helps reduce harmful vibration that can cause wrist and arm injuries.

Product SKU No.	O.A. Length		Head Length		Face Widths		Cross Pein Width		Head Weight		Box/Ctn
	in.	mm	in.	mm	in.	mm	in.	mm	lbs.	kg	
56-003	14	356	5-1/8	130	1-25/64	35	1-25/64	35	2	.90	0 / 4

JACKETED FIBERGLASS BLACKSMITH HAMMERS

- Forged head is heat-treated and tempered for increased durability.
- Jacketed, hi-visibility yellow fiberglass handle adds strength and durability.

Product SKU No.	O.A. Length		Head Length		Face Widths		Cross Pein Width		Head Weight		Box/Ctn
	in.	mm	in.	mm	in.	mm	in.	mm	lbs.	kg	
56-218	13-3/4	349	5-1/8	130	1-39/64	41	1-39/64	41	2.5	1.13	0 / 4
56-220	14	356	5-5/8	143	1-59/64	49	1-59/64	49	4.0	1.81	0 / 4

STANLEY® FATMAX® ANTIVIBE® DRILLING HAMMER

- Forged, one-piece steel construction is heat treated and tempered for increased strength and durability.
- Patented tuning fork design helps reduce harmful vibration that can cause wrist and arm injuries.

Product SKU No.	O.A. Length		Head Length		Face Widths		Head Weight		Box/Ctn
	in.	mm	in.	mm	in.	mm	lbs.	kg	
56-001	11	280	4	102	1-1/2	38	3	1.36	0 / 4

JACKETED FIBERGLASS DRILLING HAMMERS

- Forged head is heat-treated and tempered for increased durability.
- Jacketed, hi-visibility yellow fiberglass handle adds strength and durability.

Product SKU No.	O.A. Length		Head Length		Face Widths		Head Weight		Box/Ctn
	in.	mm	in.	mm	in.	mm	lbs.	kg	
56-701	10-1/2	267	4-1/4	108	1-7/16	37	2	.9	0 / 4
56-705	10-3/4	273	4-1/2	114	1-10/16	41	3	1.36	0 / 4



Hand Tools

HICKORY HANDLE SOFT FACE HAMMERS

- Faces are made of durable plastic that will not mar finished surfaces
- Traditional, high quality hickory handle

Product SKU No.	O.A. Length		Head Length		Face Widths		Head Weight		Box/Ctn
	in.	mm	in.	mm	in.	mm	lbs.	kg	
57-594	12	305	3-3/4	95	1-13/64	31	8	227	6 / 24
57-595	13-1/2	343	4-7/8	124	1-21/64	34	16	454	6 / 24

HICKORY HANDLE RUBBER MALLET

- Tough rubber head molded onto handle.
- Traditional, high quality hickory handle.

Product SKU No.	O.A. Length		Head Length		Face Diameters		Head Weight		Box/Ctn
	in.	mm	in.	mm	in.	mm	lbs.	kg	
57-522	13-1/2	343	3-7/8	98	2-3/8	60	18	510	0 / 5

STANLEY® COMPO-CAST® BALL PEIN HAMMERS

- Forged and heat-treated head for increased durability.
- Rim tempered head reduces incidences of chipping or spalling.
- Non-sparking, chemical resistant molded urethane covering.
- The head is filled with steel shot to eliminate bounce back for dead blow action.

Product SKU No.	O.A. Length		Head Length		Face Diameter		Ball Pein Diameter		Head Weight		Box/Ctn
	in.	mm	in.	mm	in.	mm	in.	mm	oz.	grams	
54-516	12-5/8	321	4-1/8	105	1-1/4	32	1	25	16	454	4 / 12
54-524	12-7/8	327	4-7/16	112	1-1/2	38	1-3/16	30	24	680	0 / 2

STANLEY® COMPO-CAST® HAND DRILLING HAMMER

- Forged and heat-treated head for increased durability.
- Rim tempered head reduces incidences of chipping or spalling.
- Non-sparking, chemical resistant molded urethane covering.
- The head is filled with steel shot to eliminate bounce back for dead blow action.

Product SKU No.	O.A. Length		Head Length		Face Diameter (A)		Face Diameter (B)		Head Weight		Box/Ctn
	in.	mm	in.	mm	in.	mm	in.	mm	lbs.	kg	
56-532	10-7/16	265	4-3/4	121	1-11/16	43	1-19/64	33	32	907	2 / 12

STANLEY® COMPO-CAST® STANDARD SOFT-FACE HAMMERS

- Non-sparking, chemical resistant molded urethane covering.
- Soft striking faces prevent marring.
- No exposed metal on face, head, or shaft.
- The head is filled with steel shot to eliminate bounce back for dead blow action.

Product SKU No.	O.A. Length		Head Length		Face Diameters		Head Weight		Box/Ctn
	in.	mm	in.	mm	in.	mm	lbs.	kg	
57-530	10-1/8	257	3-1/8	79	1-13/64	31	10	284	0 / 4
57-531	11-1/4	286	3-3/4	95	1-39/64	41	18	510	0 / 4
57-532	12-7/8	327	4-1/16	103	1-51/64	46	21	595	0 / 4
57-533	14-1/4	362	4-5/8	117	2-7/64	54	42	1191	0 / 4
57-534	15-1/4	387	5-3/8	137	2-33/64	64	52	1474	0 / 2



Hammers

Hand Tools

Hammers



STANLEY® COMPO-CAST® SLIMLINE SOFT-FACE HAMMERS

- Non-sparking, chemical resistant molded urethane covering.
- Soft striking faces prevent marring.
- No exposed metal on face, head, or shaft.
- The head is filled with steel shot to eliminate bounce back for dead blow action.

Product SKU No.	O.A. Length		Head Length		Face Diameters		Head Weight		Box/Ctn
	in.	mm	in.	mm	in.	mm	lbs.	kg	
57-540	9-3/8	238	2-7/8	73	57/64	23	5	142	0 / 4
57-541	10-9/16	268	4-3/16	106	1-19/64	33	14	397	0 / 4
57-542	12-1/8	308	4-1/4	108	1-33/64	38	18	510	0 / 2
57-543	12-7/8	327	5-1/4	133	1-17/32	39	21	595	0 / 2



STANLEY® COMPO-CAST® SOFT-FACE SLEDGE HAMMERS

- Non-sparking, chemical resistant molded urethane covering.
- Soft striking faces prevent marring.
- No exposed metal on face, head, or shaft.
- The head is filled with steel shot to eliminate bounce back for dead blow action.

Product SKU No.	O.A. Length		Head Length		Face Diameters		Head Weight		Box/Ctn
	in.	mm	in.	mm	in.	mm	lbs.	kg	
57-550	19-5/8	498	7	178	2-55/64	73	5.0	2.26	0 / 2
57-551	29-7/8	759	7-1/8	181	2-61/64	75	8.0	3.62	0 / 2
57-552	29-7/8	759	8-1/8	206	3-25/64	86	10.5	4.76	0 / 2
57-554	36-1/8	918	8-1/8	206	3-25/64	86	11.5	5.21	0 / 2



HICKORY HANDLE SLEDGE HAMMERS

- Forged head is heat-treated and tempered for increased durability.
- Traditional, high quality hickory handle.

Product SKU No.	O.A. Length		Head Length		Face Diameters		Head Weight		Box/Ctn
	in.	mm	in.	mm	in.	mm	lbs.	kg	
56-808	34-1/4	870	6-7/16	164	2-5/16	59	8	3.62	0 / 4
56-810	34-3/8	873	7-1/8	181	2-3/8	60	10	4.53	0 / 4
56-812	35	889	7-1/2	181	2-5/8	67	12	5.44	0 / 4
56-816	35	889	8-3/8	213	2-13/16	71	16	7.25	0 / 2



Hand Tools

STANLEY® FATMAX® XTREME™ FUBAR® III

- Forged, heat treated one-piece steel construction for increased strength and durability.
- Two tiered, serrated jaw for grabbing common dimensional lumber and decking.
- Nail slot on claw end with beveled edge for pulling nails and prying.
- 4-in-1 tool for prying, splitting, board bending, and striking jobs
- Slotted claw end can also be used as a gas valve wrench to turn gas valve on/off.

Product SKU No.	O.A. Length		Claw Blade Width		Weight	Box/Ctn
	in.	mm	in.	mm		
55-120	30	762	2	51	8 lbs.	0 / 1



STANLEY
FatMax
XTREME™

STANLEY® FATMAX® XTREME™ FUBAR®

- Forged, heat treated one-piece steel construction for increased strength and durability.
- Heat treated and tempered striking face with chamfered edges.
- Two tiered, serrated jaw for grabbing common dimensional lumber and decking.
- Tear shaped, beveled nail slot specifically for pulling nails.
- Nail slot on claw end with beveled edge for pulling nails and prying.
- 4-in-1 tool for prying, splitting, board bending, and striking jobs.

Product SKU No.	O.A. Length		Claw Blade Width		Weight	Box/Ctn
	in.	mm	in.	mm		
55-099	18	457	1-1/2	38	4 lbs.	0 / 2 4



STANLEY
FatMax
XTREME™

STANLEY® FATMAX® FUNCTIONAL UTILITY BAR

- Forged, heat treated one-piece steel construction for increased strength and durability.
- Serrated jaw for grabbing lumber.
- Tear shaped, beveled nail slot specifically for pulling nails.
- Beveled chisel end for prying.
- 4-in-1 tool for prying, splitting, board bending, and striking jobs.

Product SKU No.	O.A. Length		Chisel Blade Width		Weight	Box/Ctn
	in.	mm	in.	mm		
55-119	15	381	1	25	2.5 lbs.	0 / 2



STANLEY
FatMax

STANLEY® FATMAX® WRECKING BARS

- Forged, heat treated one-piece steel construction for increased strength and durability.
- Tri-lobe design for increased strength and durability.
- Wrecking bar is able to withstand 975 ft./lbs.
- Forged recesses in bar for better grip.
- Yellow powder coated body for high visibility and provides corrosion resistance.

Product SKU No.	O.A. Length		Claw Blade Width (A)		Claw Blade Width (B)		Weight	Box/Ctn
	in.	mm	in.	mm	in.	mm		
55-101	13-1/2	343	1	25	1	25		0 / 4
55-102	23-1/2	597	1-3/4	44	1-3/4	44		0 / 4
55-104	35	889	1-3/4	44	1-3/4	44		0 / 4



STANLEY
FatMax

Demolition Tools

Hand Tools

Demolition Tools



WRECKING BARS

- Forged, heat treated one-piece steel construction for increased strength and durability.
- Beveled chisel end for prying.
- Nail slot on claw end with beveled edge for pulling nails and prying.

Product SKU No.	O.A. Length		Claw Blade Width (A)		Claw Blade Width (B)		Box/Ctn
	in.	mm	in.	mm	in.	mm	
55-118	18	457	1	25	1	25	0 / 6
55-124	23-1/2	597	1-1/4	32	1	25	0 / 6
55-136	36	914	1-1/4	32	1	25	0 / 6



OFFSET PATTERN RIPPING CHISEL

- Forged, heat treated one-piece steel construction for increased strength and durability.
- Tear shaped, beveled nail slot specifically for pulling nails.
- Nail slots on claw ends with beveled edges for pulling nails and prying.

Product SKU No.	O.A. Length		Claw Blade Width (A)		Claw Blade Width (B)		Box/Ctn
	in.	mm	in.	mm	in.	mm	
55-818	17-1/4	438	1-1/2	38	1-5/8	41	0 / 5



STANLEY® WONDER BAR® X21™ PRY BAR

- Forged, heat treated one-piece steel construction for increased strength and durability.
- Tear shaped, beveled nail slot specifically for pulling nails.
- Nail slots on claw ends with beveled edges for pulling nails and prying.

Product SKU No.	O.A. Length		Claw Blade Width (A)		Claw Blade Width (B)		Box/Ctn
	in.	mm	in.	mm	in.	mm	
55-526	21	533	1-3/4	44	1-3/4	44	0 / 4



STANLEY® WONDER BAR® PRY BAR

- Forged, heat treated one-piece steel construction for increased strength and durability.
- Bar has black finish to provide corrosion resistance.
- Yellow powder coated claw end for high visibility.
- Tear shaped, beveled nail slot specifically for pulling nails.
- Nail slots on claw ends with beveled edges for pulling nails and prying.
- Both claw ends are polished.

Product SKU No.	O.A. Length		Claw Blade Width (A)		Claw Blade Width (B)		Box/Ctn
	in.	mm	in.	mm	in.	mm	
55-515	12-3/4	324	1-3/4	44	1-3/4	44	4 / 24



Hand Tools

STANLEY® FATMAX® CHISELS WITH BI-MATERIAL HAND GUARD

- Bi-material grip for increased comfort and to provide a slip resistant grip.
- Bi-material grip also provides a hand guard to protect from overstrike.
- Striking surface is hardened and has chamfered edges for greater chipping resistance.
- Cutting edge is ground to a precise angle for efficient cutting and durability.



STANLEY® FATMAX® COLD CHISEL WITH BI-MATERIAL HAND GUARD

- Used for cutting /shaping wrought iron, cast iron, steel, brass, bronze, copper, aluminum, bolts, nuts, and rivets.

Product SKU No.	O.A. Length		Claw Blade Width		Box/Ctn
	in.	mm	in.	mm	
16-332	12	305	1	25	3 / 18

STANLEY® FATMAX® BRICK SETS WITH BI-MATERIAL HAND GUARD

- Used for cutting and splitting brick and concrete.

Product SKU No.	O.A. Length		Blade Width		Box/Ctn
	in.	mm	in.	mm	
16-327	8-1/2	216	3	76	3 / 18
16-328	8-1/2	216	4	102	3 / 18

STANLEY® FATMAX® CONCRETE CHISEL WITH BI-MATERIAL HAND GUARD

- Used for cutting through and breaking up concrete.

Product SKU No.	O.A. Length		Blade Width		Box/Ctn
	in.	mm	in.	mm	
16-329	12	305	3/4	19	3 / 18

STANLEY® FATMAX® ELECTRICIAN'S CHISEL WITH BI-MATERIAL HAND GUARD

- Used for rough cutting and trimming of wood, wallboard, and masonry.

Product SKU No.	O.A. Length		Blade Width		Box/Ctn
	in.	mm	in.	mm	
16-330	10	254	2-1/4	57	3 / 18

STANLEY® FATMAX® FLOOR CHISEL WITH BI-MATERIAL HAND GUARD

- Used for cutting, prying or ripping of hardwood flooring and nails.

Product SKU No.	O.A. Length		Blade Width		Box/Ctn
	in.	mm	in.	mm	
16-331	11	279	3	76	3 / 18

STANLEY® FATMAX® MASON'S CHISELS WITH BI-MATERIAL HAND GUARD

- Used for cutting and splitting hard stone, brick, and concrete.

Product SKU No.	O.A. Length		Blade Width		Box/Ctn
	in.	mm	in.	mm	
16-333	8-1/2	216	1-3/4	44	3 / 18
16-334	8-1/2	216	2-3/4	70	3 / 18



Demolition Tools

Hand Tools

Demolition Tools



COLD CHISELS

- Striking surface is hardened and has chamfered edges for greater chipping resistance.
- Cutting edge is ground to a precise angle for efficient cutting and durability.

BRICK SETS

- Used for cutting and splitting brick and concrete.

Product SKU No.	O.A. Length		Blade Width		Box/Ctn
	in.	mm	in.	mm	
16-296	8-1/2	216	3	76	3 / 24
16-297	8-1/2	216	4	102	3 / 24

FLOOR CHISEL

- Used for cutting, prying or ripping of hardwood flooring and nails.

Product SKU No.	O.A. Length		Blade Width		Box/Ctn
	in.	mm	in.	mm	
16-293	11	280	3	76	3 / 24

MASON'S CHISELS

- Used for cutting and splitting hard stone, brick, and concrete.

Product SKU No.	O.A. Length		Blade Width		Box/Ctn
	in.	mm	in.	mm	
16-294	8-1/2	216	1-3/4	44	3 / 24
16-295	8-1/2	216	2-3/4	70	3 / 24



Hand Tools

STAPLE SELECTION GUIDE

		Manual Staplers									
Staples	Size	TR250	TR150	TR150HL	TR110	TR45	TR40	TR35	CT70	CT10C	
Heavy Duty Narrow Crown Staples											
TRA704T	1/4	X	X	X	X						
TRA705T	5/16	X	X	X	X						
TRA706T	3/8	X	X	X	X						
TRA708T	1/2	X	X	X	X						
TRA709T	9/16	X	X	X	X						
Heavy Duty Stainless Steel Narrow Crown Staples											
TRA704SST	1/4	X	X	X	X						
TRA705SST	5/16	X	X	X	X						
TRA706SST	3/8	X	X	X	X						
TRA708SST	1/2	X	X	X	X						
TRA709SST	9/16	X	X	X	X						
Heavy Duty Monel Narrow Crown Staples											
TRA704MT	1/4	X	X	X	X						
TRA705MT	5/16	X	X	X	X						
TRA706MT	3/8	X	X	X	X						
TRA708MT	1/2	X	X	X	X						
TRA709MT	9/16	X	X	X	X						
Light Duty Narrow Crown Staples											
TRA204T	1/4					X	X	X			
TRA205T	5/16					X	X	X			
TRA206T	3/8					X	X	X			
Heavy Duty Cable Staples											
CT709	9/16								X		
CT710	5/8								X		
CT714	7/8								X		
CT710X (Super Hold)	5/8								X		
CT714X (Super Hold)	7/8								X		
Round Crown Cable Staples											
CT106T	3/8									X	
CT107T	7/16									X	
CT108T	1/2									X	
CT109T	9/16									X	
Brad Nails											
SWKBN050	1/2	X									
SWKBN625	5/8	X									
Heavy Duty Flat Narrow Crown Staples											
CT306T	3/8	For use with Arrow® T2025™									
CT308T	1/2										
Heavy Duty Wide Crown Staples											
TRC604T	1/4	For use with Ace®, Black & Decker®, Craftsman®, and Duo-Fast® Wide Crown tools									
TRC605T	5/16										
TRC606T	3/8										
TRC608T	1/2										
TRC609T	9/16										
Light Duty Wide Crown Staples											
TRS105T	5/16	For use with Swingline® staplers									
Heavy Duty PowerCrown® Staples											
TRB504T	1/4	For use with Bostitch® PowerCrown® tools									
TRB505T	5/16										
TRB506T	3/8										
TRB508T	1/2										
TRB509T	9/16										

Fastening

Arrow and T2025 are trademarks of Arrow Fastener Co., Inc. Ace is a Trademark of Peace Industries, Ltd., Black & Decker is a trademark of Black & Decker Corporation. Craftsman is a trademark of KCD IP, LLC, Duo-Fast is a trademark of Illinois Tool Works Inc., Swingline is a trademark of Acco Brands Corporation.

Hand Tools

Fastening



HEAVY DUTY STAPLER / BRAD NAILER

- Housing made of a heavy duty aircraft aluminum for strength and durability.
- Adjustable power setting allows user to select either Hi/Lo setting to adapt to material density.
- Design allows for less force to squeeze handle and provides more driving power.
- Metal stapler core slides out by depressing and pulling the tab, giving access to staple/brad channel for easy and fast bottom load.
- Internal, retractable wire guide for fastening low voltage wire.
- Drives the following brad sizes: 1/2", 9/16", and 5/8".
- Drives the following Stanley® TRA700 / Arrow® T50® series staple sizes: 1/4", 5/16", 3/8", 1/2", and 9/16".

Product	SKU No.	Body Color	O.A. Length		Box/Ctn
			in.	mm	
TR250		Grey/Black	7	178	0 / 6



HEAVY DUTY STAPLER

- Housing made of a heavy duty aircraft aluminum for strength and durability.
- Adjustable power setting allows user to select either Hi/Lo setting to adapt to material density (TR150HL only).
- Design allows for less force to squeeze handle and provides more driving power.
- Metal stapler core slides out by depressing and pulling the tab, giving access to staple channel for easy and fast bottom load.
- Drives the following Stanley® TRA700 / Arrow® T50® series staple sizes: 1/4", 5/16", 3/8", 1/2", and 9/16".

Product	SKU No.	Body Color	O.A. Length		Box/Ctn
			in.	mm	
TR150HL		Yellow/Black	7	178	0 / 6
TR150		Yellow/Black	7	178	0 / 6



HEAVY DUTY STAPLER

- Chrome plated housing made of a steel construction for strength and durability.
- Metal stapler core slides out by squeezing the latch and pulling, giving access to staple channel for easy and fast bottom load.
- Easy access to staple channel allows for jam clearing.
- Drives the following Stanley® TRA700 / Arrow® T50® series staple sizes: 1/4", 5/16", 3/8", 1/2", and 9/16".

Product	SKU No.	Body Color	O.A. Length		Box/Ctn
			in.	mm	
TR110		Chrome	7-1/8	181	0 / 6



LIGHT DUTY STAPLER

- Chrome plated housing made of a steel construction for strength and durability.
- Spring loaded staple push rod to load staples.
- TR45K Kit includes: TR45, 1/4" staples (1,000 pack), and zippered carrying case.
- Drives the following Stanley® TRA200 / Arrow® JT21® series staple sizes: 1/4", 5/16", and 3/8".

Product	SKU No.	Body Color	O.A. Length		Box/Ctn
			in.	mm	
TR45		Chrome	6	152	0 / 8



Hand Tools

LIGHT DUTY STAPLER

- Lightweight staple gun housing made of ABS for durability.
- Metal stapler core slides out by squeezing the latch and pulling, giving access to staple channel for easy and fast bottom load.
- Stapler has a 5" measuring scale molded in.
- Drives the following Stanley® TRA200 / Arrow® JT21® series staple sizes: 1/4", 5/16", and 3/8".

Product SKU No.	Body Color	O.A. Length		Box/Ctn
		in.	mm	
TR40	Grey/Black	6	152	0 / 6

LIGHT DUTY STAPLER

- Lightweight staple gun housing made of ABS for durability.
- Stapler core slides out by squeezing the tabs and pulling, giving access to staple channel for easy and fast bottom load.
- Stapler has a 4" measuring scale molded in.
- Drives the following Stanley® TRA200 / Arrow® JT21® series staple sizes: 1/4", 5/16", and 3/8".

Product SKU No.	Body Color	O.A. Length		Box/Ctn
		in.	mm	
TR35	Yellow/Black	5-1/2	140	0 / 6

HEAVY DUTY WIRE TACKER

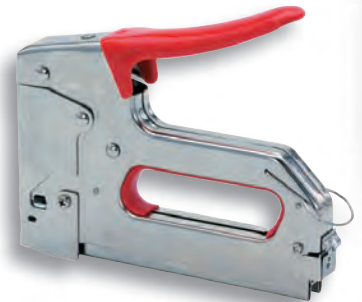
- Chrome plated housing made of a steel construction for strength and durability.
- Wire guide ensures fast, sure placement of staples.
- Fastens low voltage wire or cable up to 1/2" diameter.
- Drives the following Stanley® CT700 / Arrow® T75™ series staple sizes: 9/16", 5/8", and 7/8".

Product SKU No.	Body Color	O.A. Length		Box/Ctn
		in.	mm	
CT70	Chrome/Red	7-1/8	181	0 / 4

HEAVY DUTY CABLE TACKER

- Chrome plated housing made of a steel construction for strength and durability.
- Curved driver protects wire from damage.
- Staple indicator window allows user to know if stapler is loaded or needs reloading.
- Wire guide ensures fast, sure placement of staples.
- Fastens low voltage wire or cable up to 1/4" diameter.
- Drives the following Stanley® CT100 / Arrow® T25™ series cable staple sizes: 3/8", 7/16", 1/2", and 9/16".

Product SKU No.	Body Color	O.A. Length		Box/Ctn
		in.	mm	
CT10C	Chrome/Black	7-1/8	181	0 / 5



Fastening

Arrow, T50, JT21, T75 and T25 are trademarks of Arrow Fastener Co., Inc.

Toll Free Customer Service Number: 1-800-800-TOOL
Customer Service FAX Number: 1-770-648-9108

Visit us at...
www.stanleyproto.com

STANLEY

Hand Tools

Fastening



HEAVY DUTY SWIVEL HEAD RIVETER

- Housing made of rugged die cast aluminum.
- Head swivels 360° for setting rivets at right angles or straight on.
- Soft grip on handles provides comfort and a slip resistant grip.
- Handle clip included to keep handles together for easy storage.
- Long handles make riveter easy to squeeze.
- Spring loaded enables the tool to eject the rivet mandrel automatically on release of the handle.
- Riveter nose pieces and wrench are stored within riveter body.
- Includes 4 noses in the following sizes: 3/32", 1/8", 5/32", and 3/16".
- Uses the following Steel and Aluminum size rivets: 3/32", 1/8", 5/32", and 3/16".

Product SKU No.	Body Color	O.A. Length		Box/Ctn
		in.	mm	
MR77C	Yellow/Black	11-1/8	283	0 / 5



HEAVY DUTY RIVETER

- Housing made of rugged metal.
- Soft grip on handles provides comfort and a slip resistant grip.
- Handle clip included to keep handles together for easy storage.
- Long handles make riveter easy to squeeze.
- Spring loaded enables the tool to eject the rivet mandrel automatically on release of the handle.
- Riveter nose pieces and wrench are stored within riveter body.
- Includes 4 noses in the following sizes: 3/32", 1/8", 5/32", and 3/16".
- Uses the following Steel and Aluminum size rivets: 3/32", 1/8", 5/32", and 3/16".

Product SKU No.	Body Color	O.A. Length		Box/Ctn
		in.	mm	
MR55C5	Silver/Black	10	254	0 / 5



HEAVY DUTY RIVETER

- Housing made of steel.
- Soft grip on handles provides comfort and a slip resistant grip.
- Handle clip included to keep handles together for easy storage.
- Long handles make riveter easy to squeeze.
- Spring loaded enables the tool to eject the rivet mandrel automatically on release of the handle.
- Riveter nose pieces and wrench are stored within riveter body.
- Includes 3 noses in the following sizes: 1/8", 5/32", and 3/16".
- Uses the following Steel and Aluminum size rivets: 1/8", 5/32", and 3/16".

Product SKU No.	Body Color	O.A. Length		Box/Ctn
		in.	mm	
MR33C	Yellow/Black	10	254	0 / 5

RIVET SELECTION GUIDE

RIVETS	SIZE	MR77C	MR55C5	MR33C
STEEL RIVETS				
PSS42	1/8" X 1/8"	x	x	x
PSS44	1/8" X 1/4"	x	x	x
PSS48	1/8" X 1/2"	x	x	x
STAINLESS STEEL RIVETS				
PTT42	1/8" X 1/8"	x		
PTT44	1/8" X 1/4"	x		
PTT48	1/8" X 1/2"	x		
PTT54	5/32" X 1/4"	x		
ALUMINUM RIVETS				
PAA42	1/8" X 1/8"	x	x	x
PAA42W	1/8" X 1/8" white	x	x	x
PAA44	1/8" X 1/4"	x	x	x
PAA46	1/8" X 3/8"	x	x	x
PAA48	1/8" X 1/2"	x	x	x
PAA52	5/32" X 1/8"	x	x	x
PAA54	5/32" X 1/4"	x	x	x
PAA58	5/32" X 1/2"	x	x	x
PAA610	3/16" X 5/8"	x	x	x
PAA62	3/16" X 1/8"	x	x	x
PAA64	3/16" X 1/4"	x	x	x
PAA66	3/16" X 3/8"	x	x	x
PAA68	3/16" X 1/2"	x	x	x
RIVET PACK				
R120	Assortment	x	x	x



Hand Tools

STANLEY® FATMAX® XTREME™ DEMOLITION DRIVERS

- Thru-tang bar transfers strike-force from strike cap to tip.
- Cold-formed steel strike cap withstands striking blows.
- Shatter-resistant bi-material acetate/rubber handle.
- Shatter-resistant bar designed for striking and prying.
- Blade made out of chrome vanadium steel for strength and durability.



Product		
SKU No.	Contains	Box/Ctn
67-546	2 Piece Set - Carded Standard Slotted Tip 5/16" x 5-1/4" Phillips® Tip 2 Pt. x 5-1/4"	2 / 8



VINYL GRIP SCREWDRIVERS

- Vinyl grip handle provides extra torque capability, greater comfort, and a slip resistant grip.
- Acetate handle built for strength.
- Blades are fully ground and polished, then chrome plated for corrosion resistance.

VINYL GRIP SCREWDRIVER SETS

Product		
SKU No.	Contains	Box/Ctn
66-708	8 Piece Set - Pouch 66-088 – Standard Slotted Tip (Stubby) 1/4" x 1-1/2" 66-090 – Standard Slotted Tip 1/4" x 4" 66-094 – Standard Slotted Tip (Square Blade) 5/16" x 6" 66-095 – Standard Slotted Tip (Square Blade) 3/8" x 8" 66-097 – Cabinet Slotted Tip 3/16" x 6" 65-905 – Phillips® Tip (Stubby) 2 Pt. x 1-1/2" 65-901 – Phillips® Tip 1 Pt. x 3" 65-902 – Phillips® Tip 2 Pt. x 4"	0 / 1
66-565P	6 Piece Set - Carded 66-090 – Standard Slotted Tip 1/4" x 4" 66-091 – Standard Slotted Tip 5/16" x 6" 66-096 – Cabinet Slotted Tip 3/16" x 3" 66-097 – Cabinet Slotted Tip 3/16" x 6" 65-901 – Phillips® Tip 1 Pt. x 3" 65-902 – Phillips® Tip 2 Pt. x 4"	0 / 6



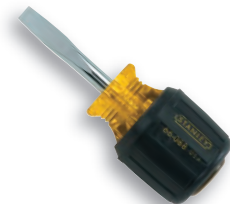
66-708



66-565P

VINYL GRIP ROUND BLADE / STANDARD SLOTTED TIP STUBBY SCREWDRIVER

Product SKU No.	O.A. Length		Blade Length		Blade Dia.		Tip Width		Box/Ctn
	in.	mm	in.	mm	in.	mm	in.	mm	
66-088	3-7/16	87	1-1/2	38	1/4	6.5	1/4	6.5	6 / 36



Screwdrivers

Phillips® is a registered trademark of Phillips Screw Co.

Hand Tools

Screwdrivers



VINYL GRIP ROUND BLADE / STANDARD SLOTTED TIP SCREWDRIVERS

- Bolster reinforced construction.
- Hex bolster allows for use with a wrench for added torque.

Product SKU No.	O.A. Length		Blade Length		Blade Dia.		Tip Width		Box/Ctn
	in.	mm	in.	mm	in.	mm	in.	mm	
66-089	6-3/4	171	3	76	3/16	5.0	3/16	5.0	6 / 36
66-090	8-3/8	213	4	102	1/4	6.5	1/4	6.5	6 / 36
66-091	11	279	6	152	5/16	8.0	5/16	8.0	6 / 24
66-092	13-3/8	340	8	203	3/8	9.5	3/8	9.5	6 / 24



VINYL GRIP SQUARE BLADE / STANDARD SLOTTED TIP SCREWDRIVERS

- Bolster reinforced construction.
- Square blade allows for use with a wrench for added torque.

Product SKU No.	O.A. Length		Blade Length		Blade Dia.		Tip Width		Box/Ctn
	in.	mm	in.	mm	in.	mm	in.	mm	
66-093	8-3/8	213	4	102	1/4	6.5	1/4	6.5	6 / 36
66-094	11	279	6	152	5/16	8.0	5/16	8.0	6 / 24
66-095	13-1/2	342	8	203	3/8	9.5	3/8	9.5	6 / 24



VINYL GRIP LIGHT ROUND BLADE / CABINET SLOTTED TIP SCREWDRIVERS

Product SKU No.	O.A. Length		Blade Length		Blade Dia.		Tip Width		Box/Ctn
	in.	mm	in.	mm	in.	mm	in.	mm	
66-096	6-3/4	171	3	76	3/16	5.0	3/16	5.0	6 / 36
66-097	9-3/4	248	6	152	3/16	5.0	3/16	5.0	6 / 36
66-098	11-3/4	298	8	203	3/16	5.0	3/16	5.0	6 / 24



VINYL GRIP ROUND BLADE / PHILLIPS® TIP STUBBY SCREWDRIVER

- Designed for close-quarter driving.
- Precision machined Phillips® tip is blasted black oxide for proper fastener fit and to help eliminate plate chipping.

Product SKU No.	O.A. Length		Blade Length		Blade Dia.		Tip Width		Box/Ctn
	in.	mm	in.	mm	in.	mm	in.	mm	
65-905	3-7/16	87	1-1/2	38	1/4	6.5	2		6 / 36



VINYL GRIP ROUND BLADE / PHILLIPS® TIP SCREWDRIVERS

- Precision machined Phillips® tips are blasted black oxide for proper fastener fit and to help eliminate plate chipping.

Product SKU No.	O.A. Length		Blade Length		Blade Dia.		Tip Width		Box/Ctn
	in.	mm	in.	mm	in.	mm	in.	mm	
65-901	6-3/4	171	3	76	3/16	5.0	1		6 / 36
65-902	8-3/8	213	4	102	1/4	6.5	2		6 / 36
65-903	11	279	6	152	5/16	8.0	3		6 / 36



Hand Tools

STANDARD FLUTED SCREWDRIVERS

- Ergonomically designed plastic tri-lobular handle with textured grip for comfort and to provide a slip resistant grip.

STANDARD FLUTED SCREWDRIVER SETS

Product		
SKU No.	Contains	Box/Ctn
60-020	2 Piece Set – Carded with Storage Rack 60-004 – Standard Slotted Tip 1/4" x 4" 60-002 – Phillips® Tip 2 Pt. x 4"	4 / 24
60-023	2 Piece Set – Carded with Storage Rack 60-011 – Torx® Tip T15 x 3-1/4" 60-012 – Torx® Tip T20 x 3-1/4"	4 / 24
60-042	4 Piece Set – Carded with Storage Rack 60-010 – Torx® Tip T10 x 3-1/4" 60-011 – Torx® Tip T15 x 3-1/4" 60-012 – Torx® Tip T20 x 3-1/4" 60-013 – Torx® Tip T25 x 4"	0 / 6
60-060	6 Piece Set – Carded with Storage Rack 60-003 – Cabinet Slotted Tip 3/16" x 3" 60-005 – Cabinet Slotted Tip 3/16" x 6" 60-004 – Standard Slotted Tip 1/4" x 4" 60-006 – Standard Slotted Tip 1/4" x 6" 60-001 – Phillips® Tip 1 Pt. x 4" 60-002 – Phillips® Tip 2 Pt. x 4"	0 / 6
60-081	8 Piece Set – Carded with Storage Rack 60-004 – Standard Slotted Tip 1/4" x 4" 60-006 – Standard Slotted Tip 1/4" x 6" 60-003 – Cabinet Slotted Tip 3/16" x 3" 60-005 – Cabinet Slotted Tip 3/16" x 6" 60-001 – Phillips® Tip 1 Pt. x 4" 60-002 – Phillips® Tip 2 Pt. x 4" 65-032 – Offset Phillips® Screwdriver (1 Pt. & 2 Pt.) 65-033 – Offset Phillips®/Slotted Screwdriver (2 Pt. & 1/4")	0 / 6
60-100	10 Piece Set – Carded with Storage Rack N/A - Standard Slotted Tip (Stubby) 1/4" x 1-1/2" N/A - Standard Slotted Tip (Pocket) 1/8" x 2" 60-003 – Cabinet Slotted Tip 3/16" x 3" 60-005 – Cabinet Slotted Tip 3/16" x 6" 60-004 – Standard Slotted Tip 1/4" x 4" 60-006 – Standard Slotted Tip 1/4" x 6" N/A - Phillips® Tip (Stubby) 2 Pt. x 1-1/2" N/A - Phillips® Tip (Pocket) 0 Pt. x 2" 60-001 – Phillips® Tip 1 Pt. x 4" 60-002 – Phillips® Tip 2 Pt. x 4"	0 / 6

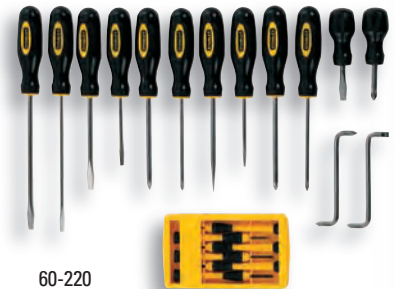


60-100

Screwdrivers

STANDARD FLUTED SCREWDRIVER SETS

Product		
SKU No.	Contains	Box/Ctn
60-220	20 Piece Set – Carded N/A - Standard Slotted Tip (Stubby) 1/4" x 1-1/2" 60-003 – Cabinet Slotted Tip 3/16" x 3" 60-003 – Cabinet Slotted Tip 3/16" x 3" 60-005 – Cabinet Slotted Tip 3/16" x 6" 60-004 – Standard Slotted Tip 1/4" x 4" 60-004 – Standard Slotted Tip 1/4" x 4" 60-006 – Standard Slotted Tip 1/4" x 6" N/A - Phillips® Tip (Stubby) 2 Pt. x 1-1/2" 60-001 – Phillips® Tip 1 Pt. x 4" 60-002 – Phillips® Tip 2 Pt. x 4" 66-052 – Precision Screwdriver Set (6 Pieces) 65-032 – Offset Phillips® Screwdriver (1 Pt. & 2 Pt.) 65-033 – Offset Phillips®/Slotted Screwdriver (2 Pt. & 1/4")	0 / 4



60-220

Phillips® is a registered trademark of Phillips Screw Co.
Torx® is a registered trademark of Acument Intellectual Properties, LLC

Toll Free Customer Service Number: 1-800-800-TOOL
Customer Service FAX Number: 1-770-648-9108

Visit us at...
www.stanleyproto.com

STANLEY

Hand Tools

Screwdrivers



STANDARD FLUTED ROUND BLADE / STANDARD SLOTTED TIP SCREWDRIVERS

Product SKU No.	O.A. Length		Blade Length		Blade Dia.		Tip Width		Box/Ctn
	in.	mm	in.	mm	in.	mm	in.	mm	
60-004	7-7/8	200	4	102	1/4	6.5	1/4	6.5	6 / 36
60-006	9-7/8	251	6	152	1/4	6.5	1/4	6.5	6 / 36

STANDARD FLUTED ROUND BLADE / CABINET SLOTTED TIP SCREWDRIVERS

Product SKU No.	O.A. Length		Blade Length		Blade Dia.		Tip Width		Box/Ctn
	in.	mm	in.	mm	in.	mm	in.	mm	
60-003	6-7/8	175	3	76	3/16	5.0	3/16	5.0	6 / 36
60-005	9-7/8	251	6	152	3/16	5.0	3/16	5.0	6 / 36

STANDARD FLUTED ROUND BLADE / PHILLIPS® TIP SCREWDRIVERS

Product SKU No.	O.A. Length		Blade Length		Blade Dia.		Point Size	Box/Ctn
	in.	mm	in.	mm	in.	mm		
60-001	7-7/8	200	4	102	3/16	5.0	1	6 / 36
60-002	7-7/8	200	4	102	1/4	6.5	2	6 / 36

STANDARD FLUTED ROUND BLADE / TORX® TIP SCREWDRIVERS

Product SKU No.	O.A. Length		Blade Length		Blade Dia.		Point Size	Box/Ctn
	in.	mm	in.	mm	in.	mm		
60-010	7-1/8	181	3-1/4	83	3/16	5.0	T10	6 / 36
60-011	7-1/8	181	3-1/4	83	3/16	5.0	T15	6 / 36
60-012	7-1/8	181	3-1/4	83	3/16	5.0	T20	6 / 36
60-013	7-7/8	181	4	102	3/16	5.0	T25	6 / 36

STANDARD FLUTED ROUND BLADE / SQUARE TIP SCREWDRIVERS

Product SKU No.	O.A. Length		Blade Length		Blade Dia.		Point Size	Box/Ctn
	in.	mm	in.	mm	in.	mm		
60-015	7-7/8	200	4	102	3/16	5.0	1	6 / 36
60-016	8-7/8	225	5	127	3/16	5.0	2	6 / 36

OFFSET PHILLIPS® TIP SCREWDRIVER

• Offset screwdriver offers a #1 and #2 Phillips® end.

Product SKU No.	O.A. Length		Blade Dia.		Point Sizes	Box/Ctn
	in.	mm	in.	mm		
65-032	4-1/8	105	1/4	6.5	1 & 2	6 / 72

OFFSET PHILLIPS® TIP / STANDARD SLOTTED TIP SCREWDRIVER

• Offset screwdriver offers a 1/4" standard slotted and #2 Phillips® end.

Product SKU No.	O.A. Length		Blade Length		Blade Dia.		Point Size	Box/Ctn
	in.	mm	in.	mm	in.	mm		
65-033	4-1/8	105	1/4	6.5	1/4	6.5	2	6 / 72



Hand Tools

STANLEY® 4-IN-1 BI-MATERIAL POCKET DRIVER

- Soft, comfortable, Bi-Material, Non-Slip.
- Magnetic Bits Attract and Hold Small Screws.
- 2 Double-ended Bits (1/8" slotted/Phillips #1, 1/16" slotted/Phillips #000).
- Exclusive S2 Tool Steel hardened for Maximum Durability.

Product SKU No.	Bits Included	O.A. Length		Box/Ctn
		in.	mm	
66-344	2 Double Ended Bits Slotted (1/8", 5/32") Phillips® (#0, #1)	5-1/2	140	8 / 48



MULTI-BIT RATCHETING SCREWDRIVER

- Ergonomically designed tri-lobular handle with textured rubber grip for comfort and to provide a slip resistant grip.
- Magnetic bit holder for quick and secure changeover of bits.
- Rotating bit storage for easy access and secure transport.

Product SKU No.	Bits Included	O.A. Length		Box/Ctn
		in.	mm	
68-010	10 Multi-Bits Slotted (3/16", 1/4") Phillips® (1 Pt., 2 Pt.) Pozidriv® (1 Pt., 2 Pt.) Square (1Pt., 2 Pt.) Torx® (T10, T15)	10	254	6 / 36



68-010

MULTI-BIT FLEXIBLE SCREWDRIVER

- Handle has textured rubber grip for comfort and to provide a slip resistant grip.
- Plated flexible shaft for corrosion resistance.
- Flexible driver allows access to hard to reach places.
- 10 bit holder with clip for storage.

Product SKU No.	Bits Included	O.A. Length		Box/Ctn
		in.	mm	
62-508	10 Multi-Bits Slotted (3/16", 1/4", 9/32") Phillips® (1 Pt., 2 Pt., 3 Pt.) Square (1Pt., 2 Pt.) Torx® (T15, T20)	10-3/4	273	4 / 24



9-WAY SCREWDRIVER

- Handle has textured rubber grip for comfort and to provide a slip resistant grip.
- Interchangeable bars maximize versatility.
- Includes storage case.

Product SKU No.	Bits Included	O.A. Length		Box/Ctn
		in.	mm	
62-511	9 Bars Slotted (1/8", 3/16", 1/4") Phillips® (0 Pt., 1 Pt., 2 Pt.) Brad Awl Tack Lifter Hook Driver	7-3/4	197	6 / 24



Phillips® and Pozidriv® are registered trademarks of Phillips Screw Co.
Torx® is a registered trademark of Acument Intellectual Properties, LLC

Toll Free Customer Service Number: 1-800-800-TOOL
Customer Service FAX Number: 1-770-648-9108

Visit us at...
www.stanleyproto.com

STANLEY

Screwdrivers

Hand Tools



Diamond texture handle for a firm grip and extra torque.

6-WAY SCREWDRIVER

- Ergonomically designed tri-lobular handle with textured rubber grip for comfort and to provide a slip resistant grip.
- Interchangeable drive shaft barrel maximizes versatility allowing end user to use either end of the drive shaft barrel as a nut driver or use it with the two included double ended bits.

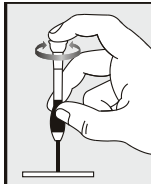
Product SKU No.	Bits Included	O.A. Length		Box/Ctn
		in.	mm	
68-012	6 Tips Slotted (3/16", 1/4") Phillips® (1 Pt., 2 Pt.) Nut Driver (1/4", 5/16")	7-3/4	197	6 / 24



JEWELERS PRECISION SCREWDRIVER SET

- Swivel-head handles provide precision and reach.
- Fluted shafts provide a better grip for comfort and a slip resistant grip.

Product SKU No.	Bits Included	O.A. Length		Box/Ctn
		in.	mm	
66-039	6 Piece Set – Carded with Plastic Storage Case Slotted (1.4mm, 2.0mm, 2.4mm, 3.0mm) Phillips® (0 Pt., 1 Pt.)			0 / 36



PRECISION SCREWDRIVER SET

- Swivel-head handles provide precision and reach.
- Handle has textured rubber grip for comfort and to provide a slip resistant grip.

Product SKU No.	Bits Included	O.A. Length		Box/Ctn
		in.	mm	
66-052	6 Piece Set – Carded with Plastic Storage Case Slotted (1.4mm, 2.0mm, 2.4mm, 3.0mm) Phillips® (0 Pt., 1 Pt.)			6 / 24



WOOD HANDLE SCRATCH AWL

- Machined wood handle with flat sides to prevent rolling.
- Alloy steel bar anchored into handle.

Product SKU No.	O.A. Length		Blade Length		Blade Dia.		Box/Ctn
	in.	mm	in.	mm	in.	mm	
69-122	6-1/16	154	3-3/8	86	3/16	5.0	6 / 24



PICK AND HOOK SET

- Handle with textured rubber grip for comfort and to provide a slip resistant grip.
- Versatile set for a wide range of applications.

Product SKU No.		O.A. Length		Box/Ctn
		in.	mm	
82-115	4 Piece Set - Carded Straight Pick 90° Hook Angle Hook Full Hook	6	152	4 / 24

Phillips® is a registered trademark of Phillips Screw Co.



Hand Tools

STANLEY® MAXSTEEL™ INSULATED PLIERS

- Plier is drop-forged from high carbon steel for strength and increased durability.
- Insulated handles to 1000V for safety.
- Bi-material handle provides a comfortable and slip resistant grip.



STANLEY® MAXSTEEL™ INSULATED DIAGONAL CUTTING PLIERS

- High-leverage pivot design allows for easier cutting.
- Angled diagonal pliers allow for easy work in confined spaces.

Product SKU No.	O.A. Length		Jaw Length		Jaw Width		Jaw Thickness		Cutting Edge Length		Box/Ctn
	in.	mm	in.	mm	in.	mm	in.	mm	in.	mm	
84-004 (Angled)	7-1/2	191	55/64	22	1-9/64	29	1/2	13	55/64	22	4 / 24
84-005 (Angled)	8-3/8	213	57/64	23	1-9/64	29	27/64	11	57/64	23	4 / 24
84-009	6-3/8	162	7/8	22	55/64	22	31/64	12	7/8	22	4 / 24



STANLEY® MAXSTEEL™ INSULATED COMBINATION CUTTING PLIERS

- High-leverage pivot design allows for easier cutting.
- Head features straight and curved serrated surfaces for grasping, turning, and twisting wire.

Product SKU No.	O.A. Length		Jaw Length		Jaw Width		Jaw Thickness		Cutting Edge Length		Box/Ctn
	in.	mm	in.	mm	in.	mm	in.	mm	in.	mm	
84-000	6-1/2	165	1-13/32	36	1-3/64	27	25/64	10	39/64	15	4 / 24
84-001	7-1/2	191	1-35/64	39	1-1/16	27	7/16	11	43/64	17	4 / 24



STANLEY® MAXSTEEL™ INSULATED LONG NOSE CUTTING PLIERS

- High-leverage pivot design allows for easier cutting.
- Head features serrated surfaces for grasping, turning, and twisting wire.

Product SKU No.	O.A. Length		Jaw Length		Jaw Width		Thickness		Cutting Edge Thickness		Box/Ctn		
	in.	mm	in.	mm	in.	mm	in.	mm	in.	mm			
84-006	6-1/4	159	2-3/32	53	45/64	18	11/32	9	9/64	4	7/16	11	4 / 24



STANLEY® MAXSTEEL™ INSULATED BENT LONG NOSE CUTTING PLIER

- High-leverage pivot design allows for easier cutting.
- Head features serrated surfaces for grasping, turning, and twisting wire.

Product SKU No.	O.A. Length		Jaw Length		Jaw Width		Thickness		Cutting Edge Thickness		Box/Ctn		
	in.	mm	in.	mm	in.	mm	in.	mm	in.	mm			
84-008	7-7/8	200	2-7/8	73	23/32	18	3/8	10	5/32	4	37/64	15	4 / 24



STANLEY® MAXSTEEL™ INSULATED END CUTTING PLIER

- High-leverage pivot design allows for easier cutting.
- Unique head design allows for flush cutting.

Product SKU No.	O.A. Length		Jaw Length		Jaw Width		Thickness		Cutting Edge Length		Box/Ctn
	in.	mm	in.	mm	in.	mm	in.	mm	in.	mm	
84-016	6-5/8	168	21/64	8	1-31/64	38	15/16	24	15/16	24	4 / 24



STANLEY® MAXSTEEL™ INSULATED WIRE STRIPPER

- Used for stripping up to 10 gauge wire.
- Adjustable, solid brass hardware for smooth operation.

Product SKU No.	O.A. Length		Box/Ctn
	in.	mm	
84-010	6-3/4	171	4 / 24



Pliers

Hand Tools

Pliers & Adjustable Wrenches



STANLEY® MAXSTEEL® INSULATED GROOVE JOINT PLIER

- Head features serrated surfaces for grasping and turning objects.

Product SKU No.	O.A. Length		Blade Dia.		Point Sizes	Box/Ctn
	in.	mm	in.	mm		
84-294	10	254	1-1/2	38	7	4 / 24



STANLEY® MAXSTEEL® INSULATED PLIER SET

Product SKU No.	Contains	Box/Ctn
84-011	3 Piece Set – Carrying Case 84-001 – Combination Cutting Plier 84-003 – Angled Diagonal Cutting Plier 84-007 – Long Nose Cutting Plier	0 / 4



STANLEY® FATMAX® PUSH-LOCK™ GROOVE JOINT PLIERS

- Optimized jaw geometry for multiple gripping applications and increased accessibility.
- 17 button locked positions.
- Stainless adjustment button.
- Drop forged construction for strength.

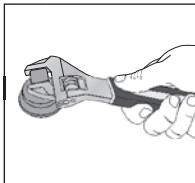
Product SKU No.	O.A. Length		Box/Ctn
	in.	mm	
84-647	8	203	4 / 24
84-648	10	254	4 / 24
84-649	12	305	4 / 24



STANLEY® FATMAX® PUSH-LOCK™ SLIP JOINT PLIERS

- Forged alloy steel body for strength and durability.
- 6" slip joint
- 3 opening positions – 1st on the market
- Position locking button
- Laser marking for 3 positions
- Stainless adjustment button

Product SKU No.	O.A. Length		Box/Ctn
	in.	mm	
84-645	6	152	4 / 24
84-646	8	203	4 / 24



STANLEY® MAXSTEEL® ADJUSTABLE WRENCHES

- Forged alloy steel body for strength and durability.
- Extra wide jaw capacity opens wider than standard adjustable wrenches.
- Precision machined jaws.
- Laser etched SAE and Metric scale on jaw.
- Black finish for corrosion resistance.
- Knurl turns smoothly for easy operation.
- Bi-material handle for comfort and a slip resistant grip.
- Hang hole in handle simplifies wall storage.

Product SKU No.	O.A. Length		Jaw Capacity		Box/Ctn
	in.	mm	in.	mm	
90-947	7	178	1	25	2 / 12
90-948	8-1/2	216	1-1/8	29	2 / 12
90-949	10-1/2	267	1-3/8	35	2 / 12
90-950	12-1/2	318	1-1/2	38	2 / 12



LOCKING ADJUSTABLE WRENCH

- Forged alloy steel body for strength and durability.
- Designed to combine two tools in one – adjustable wrench and locking plier.
- Chrome plated for corrosion resistance.
- Knurl turns smoothly for easy operation.
- Hang hole in handle simplifies wall storage.

Product SKU No.	O.A. Length		Jaw Capacity		Box/Ctn
	in.	mm	in.	mm	
85-610	10	254	1-1/4	32	6 / 24



Hand Tools

STANLEY® MAXSTEEL® AVIATION SNIPS

- Drop forged steel blades for strength and durability.
- Serrated blades prevents materials from slipping during use.
- Double over wound spring for longer life.
- Safety latch automatically releases with the squeeze of the handles.

Product SKU No.	Description	O/A Length		Cutting Edge		Cutting Capacity		Box/Ctn
		in.	mm	in.	mm	Cold Roll Steel	Stainless Steel	
14-562	Left Curve	9-3/4	248	1-1/2	38	18 ga.	23 ga.	6 / 24
14-563	Straight Cut	10	254	1-3/4	44	18 ga.	23 ga.	6 / 24
14-564	Right Curve	9-3/4	248	1-1/2	38	18 ga.	23 ga.	6 / 24
14-566	Straight Cut	11-1/4	286	3-1/8	79	20 ga.	25 ga.	6 / 24
14-567	Offset Left Curve	9-3/4	248	1-11/16	43	18 ga.	23 ga.	6 / 24
14-568	Offset Right Curve	9-3/4	248	1-11/16	43	18 ga.	23 ga.	6 / 24

Product

SKU No.	Description	Box/Ctn
14-559L	3 Piece Set – Carded 14-562 – Left Curve 14-563 – Straight Cut 14-564 – Right Curve	0 / 6

STANLEY® MAXSTEEL® ALL-PURPOSE SNIPS

- Drop forged steel blades for strength and durability.
- Double dipped handles for comfortable use.

Product SKU No.	Description	O/A Length		Cutting Edge		Cutting Capacity		Box/Ctn
		in.	mm	in.	mm	Cold Roll Steel	Stainless Steel	
14-569	Straight Cut	7	178	1-3/4	44	24 ga.	28 ga.	6 / 24
14-556	Straight Cut	10	254	2-7/16	62	22 ga.	26 ga.	6 / 24
14-558	Straight Cut	12	305	2-7/8	73	20 ga.	22 ga.	6 / 24

STANLEY® MAXSTEEL® LIGHT DUTY BENCH VISE

- Durable cast iron construction for strength and durability.
- Base bolts directly to work bench surface for stability.
- Base swivels and locks for versatility.
- Roll formed screw threads ensure smooth operation and durability.
- Chrome plated hardware resists corrosion.

Product SKU No.	Throat Depth		Clamping Capacity		Clamping Force	Box/Ctn
	in.	mm	in.	mm	lbs.	
83-065	2-1/2	64	4-1/2	114	250	0 / 1

STANLEY® MAXSTEEL® HEAVY DUTY BENCH VISE

- Durable cast iron construction for strength and durability.
- Base bolts directly to work bench surface for stability.
- Base swivels and locks for versatility.
- Roll formed screw threads ensure smooth operation and durability.
- Chrome plated hardware resists corrosion.







Product SKU No.	Throat Depth		Clamping Capacity		Clamping Force	Box/Ctn
	in.	mm	in.	mm	lbs.	
83-066	3	76	4	102	102	0 / 1
83-067	4	102	5	127	127	0 / 1
83-068	4	102	6	152	152	0 / 1



Snips & Vises

Hand Tools

Finishing Tools

SURFORM® TOOL AND BLADE CHART						
	STANDARD CUT 21-293	FINE CUT 21-393	HALF ROUND 21-299	ROUND 21-291	FINE CUT 21-398	CURVED 21-515
Hardwood	X	X	X	X	s	s
Softwood	X	X	X	X	s	s
End Grain		X			X	
Chipboard	X		X	X		X
Plywood	X		X	X		X
Blockboard	X		X	X		X
Vinyl	X	X	X	X	X	X
Rubber	X		X	X		X
Plaster	X	X	X	X	X	X
Thermalite	X		X	X		X
Chalk	X		X	X		X
Fiberglass	X		X	X		X
Brass		X			X	
Lead		X			X	X
Aluminum		X			X	
Copper		X			X	
Mild Steel		X			X	
Plastic Laminates						X
Plastic Fillers	X	X	X	X	X	X
Nylon	X		X	X		X
Vinyl Flooring	X		X	X		X
Fits Tool(s)	21-296, 21-295	21-296, 21-295	21-296, 21-295	21-297	21-399	21-115



STANLEY® SURFORM® PLANE

- Die-cast alloy body with metallic grey finish.
- Ribbed section on front of body permits two hand use of tool by providing comfort and a slip resistant grip.
- Resilient enough to be used on materials that would dull a traditional bench plane blade.
- Works with these standard Stanley® Surform® blades (21-293, 21-299, 21-393).
- Stanley® Surform® Blade Included (21-393): 1.

Product SKU No.	Length		Width		Cutter Width		Box/Ctn
	in.	mm	in.	mm	in.	mm	
21-296	12-1/2	318	1-5/8	41	1-5/8	41	0 / 4

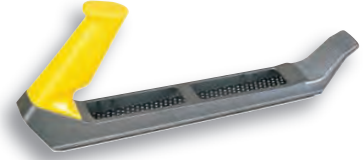


Hand Tools

STANLEY® SURFORM® FILE

- Die-cast alloy body with metallic grey finish.
- Ribbed section on front of body permits two hand use of tool by providing comfort and a slip resistant grip.
- Great tool for use as a rasp on wood, plastic, soft metals, and many other materials.
- Works with these standard Stanley® Surform® blades (21-293, 21-299, 21-393).
- Stanley® Surform® Blade Included (21-293): 1.

Product SKU No.	Length		Width		Cutter Width		Box/Ctn
	in.	mm	in.	mm	in.	mm	
21-295	17-3/8	441	1-5/8	41	1-5/8	41	0 / 6



STANLEY® SURFORM® ROUND FILE

- Front grip can be removed for use in small holes.
- Useful for enlarging holes and smoothing out curved surfaces.
- Ideal for pipe installations in MDF, chipboard, drywall, or laminates.
- Works with this standard Stanley® Surform® blade (21-291).
- Stanley® Surform® Blade Included (21-291): 1.

Product SKU No.	Length		Width		Cutter Width		Box/Ctn
	in.	mm	in.	mm	in.	mm	
21-297	15-3/4	400	1-1/2	38	5/8	16	2 / 12



STANLEY® SURFORM® POCKET PLANE

- Die-cast alloy body with metallic grey finish.
- Contoured to fit in palm of hand.
- Ideal for end-grain work, sheet rocking, and smoothing edges of laminates.
- Works with this standard Stanley® Surform® blade (21-398).
- Stanley® Surform® Blade Included (21-398): 1.

Product SKU No.	Length		Width		Cutter Width		Box/Ctn
	in.	mm	in.	mm	in.	mm	
21-399	5-5/8	143	1-5/8	41	1-5/8	41	4 / 24



STANLEY® SURFORM® SHAVER

- Simple, click on blade replacement.
- Works on pull stroke.
- Works with this standard Stanley® Surform® blade (21-515).
- Stanley® Surform® Blade Included (21-515): 1.

Product SKU No.	Length		Width		Cutter Width		Box/Ctn
	in.	mm	in.	mm	in.	mm	
21-115	7-1/4	184	1-5/8	41	1-5/8	41	4 / 24



Hand Tools



PAINT SCRAPERS

- Lightweight, molded polypropylene paint scraper.
- Textured handle provides a slip resistant grip.

28-616

- Works with this standard Stanley® scraper blade (28-631).
- Scraper Blade Included (28-631): 1.

28-617

- Works with this standard Stanley® scraper blade (28-290).
- Scraper Blade Included (28-290): 1.

28-619

- Works with this standard Stanley® scraper blade (28-292).
- Scraper Blade Included (28-292): 1.

Product SKU No.	Length		Width		Blade Width		Box/Ctn
	in.	mm	in.	mm	in.	mm	
28-616	7-1/8	181	1	25	1	25	5 / 30
28-617	8-1/8	206	1-1/2	38	1-1/2	38	5 / 30
28-619	9-1/8	232	2-1/2	64	2-1/2	64	5 / 30



SCRAPER BLADES

- Two edge blade made of high carbon steel to maintain maximum sharpness.

Product SKU No.	Blades		Length		Blade Thickness		Box/Ctn
	Per Pack	Type	in.	mm	in.	mm	
28-290	1	Carded	1-1/2	38	0.04	1	5 / 50
28-292	1	Carded	2-1/2	64	0.04	1	5 / 50



REFINISHING SCRAPER

- Heat-treated steel blade.
- Used for fine-finishing wood and paint.

Product SKU No.	Blades		Length		Blade Thickness		Box/Ctn
	Per Pack	Type	in.	mm	in.	mm	
28-035	1	Carded	5	127	0.036	0.914	5 / 50



RAZOR BLADE SCRAPER

- Heavy duty all-metal body construction.
- Blade retracts for safe storage.
- Works with these standard Stanley® razor blades (11-515, 28-510).
- Razor Blades Included: 5.
- Retractable Blade Positions: 1.

Product SKU No.	Length		Width		Blade Width		Box/Ctn
	in.	mm	in.	mm	in.	mm	
28-500	3-3/4	95	2-7/8	73	1-1/2	38	10 / 100



Hand Tools

MINI-RAZOR BLADE SCRAPER

- Blade reverses for safe storage.
- Quick release blade change.
- Removes paint, glue, putty or adhesives from glass, tile, walls, floors or other smooth surfaces.
- Works with these standard Stanley® razor blades (11-515, 28-510).
- Razor Blades Included: 1.
- Fixed Blade Positions: 1.

Product SKU No.	Length		Width		Blade Width		Box/Ctn
	in.	mm	in.	mm	in.	mm	
28-100	1-3/4	44	1-1/2	38	1-1/2	38	12 / 144

WINDOW SCRAPER

- High impact plastic body construction.
- Scraper comes with cap that goes over blade for safe storage.
- Ideal for scraping paint from windows, mirrors, tiles, and other flat surfaces.
- Works with this standard Stanley® utility blade (11-921).
- Utility Blade Included (11-921): 1.
- Fixed Blade Positions: 1.

Product SKU No.	Length		Width		Blade Width		Box/Ctn
	in.	mm	in.	mm	in.	mm	
28-593	7	178	2-3/4	70	2-7/16	6	4 / 24

GLASS & TILE SCRAPER

- High impact plastic body construction.
- Blade reverses for safe storage.
- Quick release blade change.
- Removes paint and stickers from glass and tile.
- Works with this standard Stanley® scraper blade (28-597).
- Scraper Blade Included (28-597): 1.
- Fixed Blade Positions: 1.

Product SKU No.	Length		Width		Blade Width		Box/Ctn
	in.	mm	in.	mm	in.	mm	
28-596	5-1/4	133	4	102	4	102	10 / 100

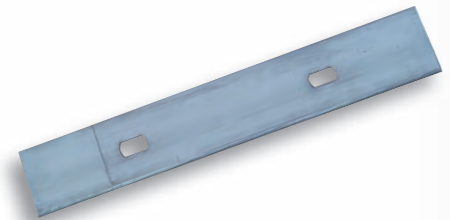
GLASS & TILE BLADE

- Blade made of high carbon steel.
- Precision honed edge.
- Blade is used to remove paint and stickers from glass and tile.

Product SKU No.	Blades		Length		Blade Thickness		Box/Ctn
	Per Pack	Type	in.	mm	in.	mm	
28-597	5	Carded	4	102	0.02	0.38	10 / 200

NYLON HANDLE PUTTY/JOINT KNIVES AND SCRAPER

Product SKU No.	Type	O / A Length		Handle Length		Blade Length		Blade Width		Box/Ctn
		in.	mm	in.	mm	in.	mm	in.	mm	
28-140	Stiff Putty	7-1/2	191	3-7/8	98	3-5/8	92	1-1/4	32	5 / 50
28-240	Flexible Putty	7-1/2	191	3-7/8	98	3-5/8	92	1-1/4	32	5 / 50
28-141	Stiff Putty	7-1/2	191	3-7/8	98	3-5/8	92	1-1/2	38	5 / 50
28-241	Flexible Putty	7-1/2	191	3-7/8	98	3-5/8	92	1-1/2	38	5 / 50
28-142	Stiff Putty	7-1/2	191	3-7/8	98	3-5/8	92	2	51	5 / 50
28-242	Flexible Putty	7-1/2	191	3-7/8	98	3-5/8	92	2	51	5 / 50
28-244	Flexible Joint	8-1/4	210	3-3/4	95	4-1/2	114	4	102	5 / 50
28-246	Flexible Joint	8-1/4	210	3-3/4	95	4-1/2	114	6	152	5 / 50
28-139	Stiff Scraper	7-1/2	191	3-7/8	98	3-5/8	92	3	76	5 / 50



Putty Knife



Scraper

Hand Tools

Soft Sided Storage

STANLEY
FatMax
XTREME



STANLEY® FATMAX® XTREME™ OPEN MOUTH TOOL BAG

- Made of durable and virtually maintenance free 1200 x 1200 denier polyester fabric.
- Bottom made of tough wear and water resistant plastic.
- Heavy duty metal framework supports open mouth design.
- Large, heavy duty plastic handles with rubber grip for comfort and to provide a slip-resistant grip.
- Removable, adjustable shoulder strap with padding for added comfort.
- Each zippered exterior pocket has a magnet sewn into the flap to keep pocket open or closed when unzipped.
- Storage – Exterior
Velcro Pocket (1)
Zippered Pockets (4)
Tool Pockets (9)
Tool Loops (4)
- Storage – Interior
Zippered Pocket (1)
Tool Pockets (8)

Product SKU No.	Length		Width		Height		Box/Ctn
	in.	mm	in.	mm	in.	mm	
501200M	19	483	15-1/2	394	8-1/2	216	0 / 4
501400M	22-1/2	572	13	330	10-1/4	260	0 / 4

STANLEY
FatMax
XTREME



STANLEY® FATMAX® XTREME™ TECHNICIAN TOOL BAG – 12"

- Made of durable and virtually maintenance free 1200 x 1200 denier polyester fabric.
- Bottom made of tough wear and water resistant plastic.
- Integrated plastic structure reinforcements on side/end walls create a non-collapsing design.
- Open top allows for easy access to bag contents.
- Removable, adjustable shoulder strap with padding for added comfort.
- Storage – Exterior
Velcro Pockets (3)
Tool Pockets (12)
- Storage – Interior
Tool Loops (18)
- Tool Divider
Tape Holster (1)
Tool Loops (12)

Product SKU No.	Length		Width		Height		Box/Ctn
	in.	mm	in.	mm	in.	mm	
501600M	12-1/2	318	12-1/2	318	16	406	0 / 4

STANLEY
FatMax
XTREME



STANLEY® FATMAX® XTREME™ OPEN TOTE - 22"

- Made of durable and virtually maintenance free 1200 x 1200 denier polyester fabric.
- Bottom made of tough wear and water resistant plastic.
- Integrated plastic structure reinforcements on side/end walls create a non-collapsing design.
- Heavy duty, riveted steel handle provides strength and rigidity to the bag.
- Removable, adjustable shoulder strap with padding for added comfort.
- Storage – Exterior
Velcro Pockets (4)
Zippered Pocket – Saw storage (1)
Tool Pockets (10)
- Storage – Interior
Elastic Tool Loops (8)
Tool Loops (10)

Product SKU No.	Length		Width		Height		Box/Ctn
	in.	mm	in.	mm	in.	mm	
501500M	22-1/2	572	11-1/4	286	14-3/8	365	0 / 4



Hand Tools

STANLEY® FATMAX® XTREME™ ROUND TOP TOOL BAG – 22"

- Made of durable and virtually maintenance free 1200 x 1200 denier polyester fabric.
- Bottom made of tough wear and water resistant plastic.
- Integrated plastic structure reinforcements on side/end walls create a non-collapsing design.
- Open double pull zippered lid for easy access to bulk storage area.
- Removable, adjustable shoulder strap with padding for added comfort.
- Each zippered exterior pocket has a magnet sewn into the flap to keep pocket open or closed when unzipped.
- Mesh net pocket included for added storage on the backside of the lid.
- Storage – Exterior
 - Velcro Pocket (1)
 - Zippered Pockets (4)
 - Tool Pockets (4)
 - Tool Loops (4)
- Storage – Interior
 - Zippered Pocket (1)
 - Tool Pockets (9)



Product SKU No.	Length		Width		Height		Box/Ctn
	in.	mm	in.	mm	in.	mm	
501300M	22-1/2	572	14-3/8	365	14-1/4	362	0 / 4

STANLEY® FATMAX® OPEN MOUTH TOOL BAG - 18"

- Made of durable and virtually maintenance free 600 x 600 denier polyester fabric.
- Bottom made of tough wear and water resistant plastic.
- Heavy duty metal framework supports open mouth design.
- Removable, adjustable shoulder strap with padding for added comfort.
- Storage – Exterior
 - Zippered Pocket (1)
 - Tool Pockets (10)
- Storage – Interior
 - Zippered Pocket (1)
 - Tool Pockets (4)
 - Tool Loops (3)



Product SKU No.	Length		Width		Height		Box/Ctn
	in.	mm	in.	mm	in.	mm	
518150M	19-1/4	489	9-1/4	235	12-3/4	324	0 / 4

STANLEY® FATMAX® TECHNICIAN TOOL BAG – 12"

- Made of durable and virtually maintenance free 600 x 600 denier polyester fabric.
- Bottom made of tough wear and water resistant plastic.
- Integrated plastic structure reinforcements on side/end walls create a non-collapsing design.
- Removable, adjustable shoulder strap with padding for added comfort.
- Storage – Exterior
 - Velcro Pocket (1)
 - Zippered Pocket (1)
 - Tool Pockets (10)
- Storage – Interior
 - Tool Loops (10)
- Tool Divider
 - Tape Holster (1)
 - Tool Loops (8)



Product SKU No.	Length		Width		Height		Box/Ctn
	in.	mm	in.	mm	in.	mm	
511150M	12-1/2	318	12-1/2	318	16	406	0 / 4

Soft Sided Storage

Hand Tools

STANLEY
FatMax



STANLEY® FATMAX® OPEN TOTE - 18"

- Made of durable and virtually maintenance free 600 x 600 denier polyester fabric.
- Bottom made of tough wear and water resistant plastic.
- Integrated plastic structure reinforcements on side/end walls create a non-collapsing design.
- Removable, adjustable shoulder strap with padding for added comfort.
- Storage – Exterior
Velcro Pockets (3)
Zippered Pocket – Saw storage (1)
Tool Pockets (6)
- Storage – Interior
Elastic Tool Loops (8)
Tool Loops (10)

Product SKU No.	Length		Width		Height		Box/Ctn
	in.	mm	in.	mm	in.	mm	
518160M	18-7/8	479	10-1/4	260	13-3/4	349	0 / 4

Soft Sided Storage



STANLEY® OPEN MOUTH TOOL BAG - 11"

- Made of durable and virtually maintenance free 600 x 600 denier polyester fabric.
- Foam rubber bottom for reinforcement and added tool protection.
- Storage – Exterior
Snap pockets (3)
Tool pockets (3)
- Storage – Interior
Snap pockets (2)
Velcro pocket (1)
Tool sleeves (5)

Product SKU No.	Length		Width		Height		Box/Ctn
	in.	mm	in.	mm	in.	mm	
511100M	11-5/8	295	8	203	10-1/4	260	0 / 2



STANLEY® OPEN MOUTH TOOL BAG - 12"

- Made of durable and virtually maintenance free 600 x 600 denier polyester fabric.
- Foam rubber bottom for reinforcement and added tool protection.
- Storage – Exterior
Snap pocket (1)
Mesh net pocket (1)
- Storage – Interior
Velcro pocket (1)
Tool pockets (2)
Tool sleeves (5)

Product SKU No.	Length		Width		Height		Box/Ctn
	in.	mm	in.	mm	in.	mm	
512100M	12-1/4	311	6	152	9-1/4	235	0 / 2



Hand Tools

STANLEY® HARD BASE MULTI-PURPOSE TOOL BAG - 16"

- Made of durable and virtually maintenance free 600 x 600 denier polyester fabric.
- Bottom made of tough wear and water resistant plastic.
- Integrated plastic structure reinforcements on side/end walls create a non-collapsing design.
- Removable, adjustable shoulder strap with rubber shoulder pad for added comfort and slip-resistant grip.
- Backside of main lid has a mesh net pocket sewn in for added storage.
- Interior Storage Areas:
 - Bulk storage area used to store large hand or power tools and is accessed through double pull zippered lid.
 - Second storage area accessed through a double pull zipper attached to the main lid.
 - Storage area offers two zippered clear vinyl pouches, six small and two large elastic tool loops.
- Storage – Exterior
 - Velcro pockets (2)
 - Tool pockets (10)
- Storage – Interior
 - Tool Pockets (16)
 - Zippered Vinyl Pouches (2)
 - Elastic Tool Loops (8)



Product SKU No.	Length		Width		Height		Box/Ctn
	in.	mm	in.	mm	in.	mm	
516110M	16-1/2	419	9-1/2	241	9	229	0 / 2

STANLEY® OPEN MOUTH WHEELED TOOL BAG - 20"

- Made of durable and virtually maintenance free 600 x 600 denier polyester fabric.
 - Bottom made of tough wear and water resistant plastic wrapped in denier polyester fabric with elevated feet.
 - Integrated plastic structure reinforcements on side walls create a non-collapsing design.
 - Heavy duty metal framework supports open mouth design.
 - Telescoping handle extends to a height of 39" for easy tool transport.
- Storage – Exterior
- Velcro pockets (2)
 - Tool pockets (8)
- Storage – Interior
- Tool Pockets (34)



Product SKU No.	Length		Width		Height		Box/Ctn
	in.	mm	in.	mm	in.	mm	
520100M	20-1/2	521	10-1/2	267	16-1/2	419	0 / 2

STANLEY® FATMAX® MOBILE PROJECT CENTER

- Innovative work bench / durable hand cart.
- Versatile clamping - multiple peg holes.
- Heavy duty wheels that easily navigate on the site.
- Hand truck scoop to help carry load.
- Electric power capability - 3 sockets and cable holder.
- Clamping is easily adjustable with rotating handles.
- Ergonomically designed handles for easy maneuvering.

Product SKU No.	Length		Width		Height		Box/Ctn
	in.	mm	in.	mm	in.	mm	
93-292	22-3/4	578	20-1/2	521	33-1/2	851	0/2



Soft Sided Storage & Mobile Project Center