

# K2000 SERIES



## K2000

**MAINTENANCE PRO™**

**PROLINE™**

**INDUSTRIAL**

**STAINLESS STEEL**

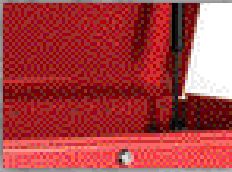
The K2000 is 20" in depth and ready to handle all your day to day needs. Durability comes standard so you get demanding jobs done time and time again.



MADE IN THE **USA** 

**K2000 SERIES**

10" Center Wheel Axle  
Adds Strength & Stability



Gas-Shock Lid Stays In Top Chests & Canopies



Heavy Duty Drawer Slides



High Security Tubular Locking System



Heavy-Duty Roller Bearing Casters



Tubular Steel End Handle



### METAL THICKNESS

Frame	16/18 ga
Drawers	18 ga
Extra Wide Drawers	14/16 ga



BK R BL BUR B YW UB  
COLORS AND CUSTOMIZATION AVAILABLE

Customize the color of your products. Simply place one of the abbreviations at the end of the model number.

### STANDARD FEATURES

	STEEL GAUGE	CENTER WHEEL AXLE	CASTERS	WORK SURFACES	OTHER
<b>MAINTENANCE PRO™</b>	16/18 ga	X	6x2	Coated MDF	Drawer Liners
<b>PROLINE</b>	18/20 ga		6x2	MDF	
<b>INDUSTRIAL</b>	18/20 ga	X	5x2		

# K2000

## 58"

### MAINTENANCE PRO™

#### 5804MP 12-DRAWER CABINET

OVERALL:	DRS.	WIDTH	DEPTH	HEIGHT	NET WT	SHIP WT	CAPACITY
	12	57 ¼"	20"	43 ½"	388 lbs.	475 lbs.	23,934 cu. in.
TOP DRAWER:	1	52 ¾"	18 ½"	6"			240 lbs.
LEFT BANK:	2	25"	18 ½"	2"			120 lbs.
	3	25"	18 ½"	4"			120 lbs.
	1	25"	18 ½"	6"			120 lbs.
RIGHT BANK:	2	25"	18 ½"	2"			120 lbs.
	2	25"	18 ½"	4"			120 lbs.
	1	25"	18 ½"	10"			240 lbs.

- Heavy Duty, Non-Slip Drawer Liners & Full-Width Aluminum Drawer Pulls
- Large 6" x 2" Roller Bearing Heavy Duty Casters
- 10" Center Wheel Axle Adds Strength & Stability
- Ball Bearing Drawer Slides
- Coated MDF Work Surface



## 52"

### MAINTENANCE PRO™

#### 5207MP 7-DRAWER TOP CHEST

OVERALL:	DRS.	WIDTH	DEPTH	HEIGHT	NET WT	SHIP WT	CAPACITY
	7	52"	20"	21½"	200 lbs.	210 lbs.	14,813 cu. in.
BOTTOM DRAWER:	1	47 ½"	18 ½"	6"			120 lbs.
LEFT BANK:	2	35"	18 ½"	2"			120 lbs.
	1	35"	18 ½"	4"			120 lbs.
RIGHT BANK:	2	9 ¾"	18 ½"	2"			120 lbs.
	1	9 ¾"	18 ½"	4"			120 lbs.

#### 5212MP 12-DRAWER CABINET

OVERALL:	DRS.	WIDTH	DEPTH	HEIGHT	NET WT	SHIP WT	CAPACITY
	7	52"	20"	42"	320 lbs.	330 lbs.	21,516 cu. in.
TOP DRAWER:	1	47 ½"	18 ½"	6"			120 lbs.
LEFT BANK:	2	35"	18 ½"	2"			120 lbs.
	3	35"	18 ½"	4"			120 lbs.
	1	35"	18 ½"	6"			120 lbs.
RIGHT BANK:	2	9 ¾"	18 ½"	2"			120 lbs.
	2	9 ¾"	18 ½"	4"			120 lbs.
	1	9 ¾"	18 ½"	10"			120 lbs.

- Heavy Duty, Non-Slip Drawer Liners & Full-Width Aluminum Drawer Pulls
- Large 6" x 2" Roller Bearing Heavy Duty Casters
- 10" Center Wheel Axle Adds Strength & Stability
- Ball Bearing Drawer Slides
- Coated MDF Work Surface



# 44"

## MAINTENANCE PRO™

### 4405MP 5-DRAWER TOP CHEST

OVERALL:	DRS.	WIDTH	DEPTH	HEIGHT	NET WT	SHIP WT	CAPACITY
	5	43 3/4"	20"	16 1/2"	123 lbs.	137 lbs.	9,723 cu. in.
DRAWERS:	4	25"	18 1/2"	2"			120 lbs.
	1	25"	18 1/2"	4"			120 lbs.
COMPARTMENT:	-	15 1/2"	19 3/8"	15 3/8"			120 lbs.

### 4400MP 10-DRAWER CABINET

OVERALL:	DRS.	WIDTH	DEPTH	HEIGHT	NET WT	SHIP WT	CAPACITY
	10	43 3/4"	20"	37 3/4"	316 lbs.	331 lbs.	14,305 cu. in.
TOP DRAWER:	1	39 1/2"	18 1/2"	6"			240 lbs.
LEFT BANK:	3	12"	18 1/2"	2"			120 lbs.
	1	12"	18 1/2"	10"			240 lbs.
RIGHT BANK:	2	25"	18 1/2"	2"			120 lbs.
	3	25"	18 1/2"	4"			120 lbs.

- Heavy Duty, Non-Slip Drawer Liners & Full-Width Aluminum Drawer Pulls
- Large 6" x 2" Roller Bearing Heavy Duty Casters
- 10" Center Wheel Axle Adds Strength & Stability
- Ball Bearing Drawer Slides
- Coated MDF Work Surface



# 42"

## MAINTENANCE PRO™

### 4202MP 7-DRAWER TOP CHEST

OVERALL:	DRS.	WIDTH	DEPTH	HEIGHT	NET WT	SHIP WT	CAPACITY
	7	41 1/4"	20"	21 1/2"	125 lbs.	155 lbs.	11,617 cu. in.
TOP TILL:	-	41 1/4"	19 3/4"	4 3/4"			120 lbs.
LEFT BANK:	2	25"	18 1/2"	2"			120 lbs.
	1	25"	18 1/2"	4"			120 lbs.
RIGHT BANK:	2	9 3/4"	18 1/2"	2"			120 lbs.
	1	9 3/4"	18 1/2"	4"			120 lbs.
BOTTOM DRAWER:	1	37 1/4"	18 1/2"	5"			120 lbs.

### 4200MP 12-DRAWER CABINET

OVERALL:	DRS.	WIDTH	DEPTH	HEIGHT	NET WT	SHIP WT	CAPACITY
	12	41 1/4"	20"	42"	250 lbs.	280 lbs.	16,686 cu. in.
TOP DRAWER:	1	37 1/4"	18 1/2"	5"			120 lbs.
LEFT BANK:	2	25"	18 1/2"	2"			120 lbs.
	3	25"	18 1/2"	4"			120 lbs.
	1	25"	18 1/2"	6"			120 lbs.
RIGHT BANK:	2	9 3/4"	18 1/2"	2"			120 lbs.
	2	9 3/4"	18 1/2"	4"			120 lbs.
	1	9 3/4"	18 1/2"	10"			240 lbs.

- Heavy Duty, Non-Slip Drawer Liners & Full-Width Aluminum Drawer Pulls
- Large 6" x 2" Roller Bearing Heavy Duty Casters
- Ball Bearing Drawer Slides
- Coated MDF Work Surface



# K2000

## 39"

### MAINTENANCE PRO™

#### 3912MP 12-DRAWER CHEST

OVERALL:	DRS.	WIDTH	DEPTH	HEIGHT	NET WT	SHIP WT	CAPACITY
	12	39 ¼"	20"	20 7/8"	193 lbs.	203 lbs.	10,313 cu. in.
TOP TILL:	-	39 ¼"	19 ¾"	3 5/8"			120 lbs.
DRAWERS:	9	11"	18 ½"	2"			120 lbs.
	2	39 3/8"	18 ½"	2"			120 lbs.
	1	39 3/8"	18 ½"	4"			120 lbs.

#### 3905MP 5-DRAWER CHEST

OVERALL:	DRS.	WIDTH	DEPTH	HEIGHT	NET WT	SHIP WT	CAPACITY
	5	39 ¼"	20"	18 3/8"	130 lbs.	140 lbs.	9,857 cu. in.
TOP TILL:	-	39 1/6"	19 ¾"	3 5/8"			120 lbs.
DRAWERS:	4	39 3/8"	18 ½"	2"			120 lbs.
	1	39 3/8"	18 ½"	4"			120 lbs.



#### 39100MP 8-DRAWER CABINET

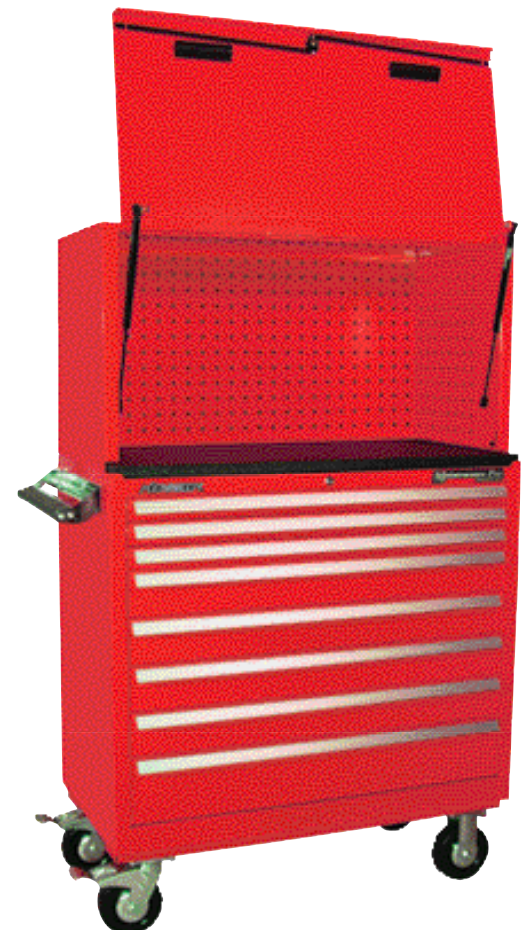
OVERALL:	DRS.	WIDTH	DEPTH	HEIGHT	NET WT	SHIP WT	CAPACITY
	8	39 3/8"	20"	42"	225 lbs.	250 lbs.	17,378 cu. in.
DRAWERS:	3	35"	18 ½"	2"			120 lbs.
	4	35"	18 ½"	4"			120 lbs.
	1	35"	18 ½"	6"			120 lbs.

- Heavy Duty, Non-Slip Drawer Liners & Full-Width Aluminum Drawer Pulls
- Large 6" x 2" Roller Bearing Heavy Duty Casters
- Ball Bearing Drawer Slides
- Coated MDF Work Surface

#### 3910MP TOP CANOPY

OVERALL:	DRS.	WIDTH	DEPTH	HEIGHT	NET WT	SHIP WT	CAPACITY
	-	39"	18"	21"	69 lbs.	74 lbs.	-

- Gas Struts
- 10pc Toolholder Hook Set (99851)



# 34"

## MAINTENANCE PRO™

### 3400MP 5-DRAWER TOP CHEST

OVERALL:	DRS.	WIDTH	DEPTH	HEIGHT	NET WT	SHIP WT	CAPACITY
	5	34"	20"	18 3/8"	146 lbs.	156 lbs.	8,225 cu. in.
TOP TILL:	-	33 3/4"	19 1/2"	3 5/8"			120 lbs.
DRAWERS:	4	30"	18 1/2"	2"			120 lbs.
	1	30"	18 1/2"	4"			120 lbs.



### 3412MP 12-DRAWER TOP CHEST

OVERALL:	DRS.	WIDTH	DEPTH	HEIGHT	NET WT	SHIP WT	CAPACITY
	12	34"	20"	20 7/8"	181 lbs.	196 lbs.	8,331 cu. in.
TOP TILL:	-	33 7/8"	19 3/4"	2 5/8"			120 lbs.
DRAWERS:	9	9 3/16"	18"	2"			120 lbs.
	2	30"	18"	2"			120 lbs.
	1	30"	18"	4"			120 lbs.

### 3407MP 7-DRAWER CABINET

OVERALL:	DRS.	WIDTH	DEPTH	HEIGHT	NET WT	SHIP WT	CAPACITY
	7	34"	20"	40 1/8"	209 lbs.	231 lbs.	14,517 cu. in.
DRAWERS:	3	30"	18 1/2"	2"			120 lbs.
	3	30"	18 1/2"	4"			120 lbs.
	1	30"	18 1/2"	10"			240 lbs.

- Heavy Duty, Non-Slip Drawer Liners & Full-Width Aluminum Drawer Pulls
- Large 6" x 2" Roller Bearing Heavy Duty Casters
- Ball Bearing Drawer Slides
- Coated MDF Work Surface



# K2000

## 29"

### MAINTENANCE PRO™

#### 2905MP 5-DRAWER TOP CHEST

OVERALL:	DRS.	WIDTH	DEPTH	HEIGHT	NET WT	SHIP WT	CAPACITY
	5	29"	20"	18 3/8"	105 lbs.	114 lbs.	7,077 cu. in.
TOP TILL:	-	28 13/16"	19 3/4"	3 1/16"			120 lbs.
DRAWERS:	4	25 1/16"	18 1/2"	2"			120 lbs.
	1	25 1/16"	18 1/2"	4"			120 lbs.



#### 2912MP 12-DRAWER TOP CHEST

OVERALL:	DRS.	WIDTH	DEPTH	HEIGHT	NET WT	SHIP WT	CAPACITY
	12	29"	20"	20 7/8"	166 lbs.	181 lbs.	7,326 cu. in.
TOP TILL:	-	28 7/8"	19 3/4"	2 5/8"			120 lbs.
DRAWERS:	9	7 9/16"	18 1/2"	2"			120 lbs.
	2	25"	18 1/2"	2"			120 lbs.
	1	25"	18 1/2"	4"			120 lbs.

#### 2907MP 7-DRAWER CABINET

OVERALL:	DRS.	WIDTH	DEPTH	HEIGHT	NET WT	SHIP WT	CAPACITY
	7	29"	20"	40 1/8"	198 lbs.	215 lbs.	12,122 cu. in.
DRAWERS:	3	25"	18 1/2"	2"			120 lbs.
	3	25"	18 1/2"	4"			120 lbs.
	1	25"	18 1/2"	10"			120 lbs.

- Heavy Duty, Non-Slip Drawer Liners & Full-Width Aluminum Drawer Pulls
- Large 6" x 2" Roller Bearing Heavy Duty Casters
- Ball Bearing Drawer Slides
- Coated MDF Work Surface



### 306MP 6-DRAWER SIDE CABINET

OVERALL:	DRS.	WIDTH	DEPTH	HEIGHT	NET WT	SHIP WT	CAPACITY
	6	13 5/8"	20"	33 1/8"	94 lbs.	100 lbs.	4,742 cu. in.
DRAWERS:	1	9 3/4"	18 1/2"	2"			120 lbs.
	4	9 3/4"	18 1/2"	4"			120 lbs.
	1	9 3/4"	18 1/2"	10"			120 lbs.

- Reversible - Hangs on Either Side of MP Cabinets
- Ball-Bearing Slides, Drawer Liners, Coated MDF Top
- Metal Thickness: Body - 16 ga. Drawers - 18 ga.

### 300MP 2-SHELF SIDE LOCKER

OVERALL:	DRS.	WIDTH	DEPTH	HEIGHT	NET WT	SHIP WT	CAPACITY
		13 5/8"	20"	33 1/8"	56 lbs.	61 lbs.	7,000 cu. in.
SHELVES:	2	9 3/4"	18 1/2"	2"			120 lbs.

- Ball-Bearing Slides on two adjustable shelves
- Metal Thickness: Body - 16 ga. Drawers - 18 ga.
- Coated MDF Top



6-Drawer Side Cabinet



2-Shelf Side Cabinet

**306MP/300 MP Fits:**  
2907MP/2912MP/3407MP/3412MP/3900MP  
4400MP/5212MP/5804MP





# K2000

## 41"

### PROLINE™

#### 10495 12-DRAWER CABINET

OVERALL:	DRS.	WIDTH	DEPTH	HEIGHT	NET WT	SHIP WT	CAPACITY
	12	41 3/8"	20"	42"	250 lbs.	280 lbs.	16,686 cu. in.
DRAWERS:							
	1	37 3/4"	18 1/2"	6"			120 lbs.
	2	25"	18 1/2"	2"			120 lbs.
	3	25"	18 1/2"	4"			120 lbs.
	1	25"	18 1/2"	6"			120 lbs.
	2	9 3/4"	18 1/2"	2"			120 lbs.
	2	9 3/4"	18 1/2"	4"			120 lbs.
	1	9 3/4"	18 1/2"	10"			240 lbs.

#### 10494 13-DRAWER CABINET

OVERALL:	DRS.	WIDTH	DEPTH	HEIGHT	NET WT	SHIP WT	CAPACITY
	13	41 3/8"	20"	42"	245 lbs.	275 lbs.	16,868 cu. in.
DRAWERS:							
	1	25"	18 1/2"	2"			120 lbs.
	5	25"	18 1/2"	4"			120 lbs.
	1	25"	18 1/2"	6"			120 lbs.
	1	9 3/4"	18 1/2"	2"			120 lbs.
	4	9 3/4"	18 1/2"	4"			120 lbs.
	1	9 3/4"	18 1/2"	10"			240 lbs.

- MDF Work Surface & Wide Top Drawer for Added Storage (10495)
- 6" x 2" Roller Bearing Casters Hold Up to 900 lbs. Each
- Ball-Bearing Drawer Slides
- Metal Thickness: Body - 18 ga. Drawers - 20 ga.



## 41"

### PROLINE™

#### 10486 8-DRAWER TOP CHEST

OVERALL:	DRS.	WIDTH	DEPTH	HEIGHT	NET WT	SHIP WT	CAPACITY
	7	41 1/4"	20"	21 1/2"	125 lbs.	155 lbs.	11,617 cu. in.
TOP TILL:	-	41 1/4"	19 3/4"	4 3/4"			120 lbs.
LEFT BANK:	2	25"	18 1/2"	2"			120 lbs.
	1	25"	18 1/2"	4"			120 lbs.
RIGHT BANK:	2	9 3/4"	18 1/2"	2"			120 lbs.
	1	9 3/4"	18 1/2"	4"			120 lbs.
BOTTOM DRAWER:	1	37 1/4"	18 1/2"	5"			120 lbs.

- Deep Drawer Holds Large Tools
- Fits 41" Cabinets

#### 10487 CANOPY

OVERALL:	DRS.	WIDTH	DEPTH	HEIGHT	NET WT	SHIP WT	CAPACITY
	-	41"	20"	20"	- lbs.	- lbs.	- cu. in.

- 10 pc. Toolholder Hook Set (99851)
- Fits 41" Cabinets



# 44" INDUSTRIAL

800-413-8665  
KENNEDYMFG.COM



## 4405 5-DRAWER TOP CHEST

OVERALL:	DRS.	WIDTH	DEPTH	HEIGHT	NET WT	SHIP WT	CAPACITY
	5	43 3/4"	20"	16 1/2"	123 lbs.	137 lbs.	9,723 cu. in.
DRAWERS:	4	25"	18 1/2"	2"			120 lbs.
	1	25"	18 1/2"	4"			120 lbs.
COMPARTMENT:	-	15 1/2"	19 3/8"	15 3/8"			120 lbs.

## 4410 10-DRAWER CABINET

OVERALL:	DRS.	WIDTH	DEPTH	HEIGHT	NET WT	SHIP WT	CAPACITY
	10	43 3/4"	20"	37 3/4"	301 lbs.	316 lbs.	14,305 cu. in.
DRAWERS:	1	39 1/2"	18 1/2"	6"			240 lbs.
	2	25"	18 1/2"	2"			120 lbs.
	3	25"	18 1/2"	4"			120 lbs.
	3	12"	18 1/2"	2"			120 lbs.
	1	12"	18 1/2"	10"			240 lbs.

- 6" x 2" Roller Bearing Casters Hold Up to 900 lbs. Each
- Ball-Bearing Drawer Slides
- Metal Thickness: Body - 18 ga. Drawers - 20 ga.



# 34" INDUSTRIAL

## 348X 8-DRAWER CABINET

OVERALL:	DRS.	WIDTH	DEPTH	HEIGHT	NET WT	SHIP WT	CAPACITY
	8	34"	20"	40"	206 lbs.	228 lbs.	14,319 cu. in.
DRAWERS:	3	30"	18 1/2"	2"			120 lbs.
	4	30"	18 1/2"	4"			120 lbs.
	1	30"	18 1/2"	6"			120 lbs.

- 5" x 2" Roller Bearing Casters Hold Up to 350 lbs. Each
- Ball-Bearing Drawer Slides
- Metal Thickness: Body - 18 ga. Drawers - 20 ga.



# 29" INDUSTRIAL

## 295/295X 5-DRAWER CABINET

OVERALL:	DRS.	WIDTH	DEPTH	HEIGHT	NET WT	SHIP WT	CAPACITY
	5	29"	20"	35"	128/133 lbs.	140/145 lbs.	9,720 cu. in.
DRAWERS:	3	25"	18 1/2"	2"			120 lbs.
	2	25"	18 1/2"	4"			120 lbs.
COMPARTMENT:	-	26 1/8"	19 3/4"	11 1/4"			120 lbs.

## 297/297X 7-DRAWER CABINET

OVERALL:	DRS.	WIDTH	DEPTH	HEIGHT	NET WT	SHIP WT	CAPACITY
	7	29"	20"	35"	146/153 lbs.	158/165 lbs.	10,235 cu. in.
DRAWERS:	3	25"	18 1/2"	2"			120 lbs.
	3	25"	18 1/2"	4"			120 lbs.
	1	25"	18 1/2"	6"			120 lbs.

- 5" x 2" Roller Bearing Casters Hold Up to 350 lbs. Each
- Model 295/297 - Features Friction Slides
- Model 295X/297X - Features Ball-Bearing Slides
- Metal Thickness: Body - 18 ga. Drawers - 20 ga.



Swing-Down Panel Conceals and Secures Spacious Storage Compartments

# K2000

## 202X 2-SHELF SIDE LOCKER

OVERALL:	DRS.	WIDTH	DEPTH	HEIGHT	NET WT	SHIP WT	CAPACITY
	2	13 3/8"	20"	29"	47 lbs.	52 lbs.	6,116 cu. in.
SHELVES:	2	9 3/4"	18 1/2"	2"			120 lbs.

## 302X 2-SHELF LOCKER

OVERALL:	DRS.	WIDTH	DEPTH	HEIGHT	NET WT	SHIP WT	CAPACITY
	2	13 3/8"	20"	33 1/8"	56 lbs.	61 lbs.	7,000 cu. in.
SHELVES:	2	9 3/4"	18 1/2"	2"			120 lbs.

- Locking Door & 2 Adjustable Pull-Out Shelves with Ball-Bearing Slides.
- Hangs on Either Side of Your Roller Cabinet.
- Metal Thickness: Body - 18 ga. Drawers - 20 ga.
- Model 202X - Fits Models 295(X), 297(X), 4410, & 4400MP
- Model 302X - Fits Models 348X, 10495, & 10494



## 205/205X 5-DRAWER SIDE CABINET

OVERALL:	DRS.	WIDTH	DEPTH	HEIGHT	NET WT	SHIP WT	CAPACITY
	5	13 3/8"	20"	29"	99/102 lbs.	99/102 lbs.	4,073 cu. in.
DRAWERS:	1	9 3/4"	18 1/2"	2"			120 lbs.
	3	9 3/4"	18 1/2"	4"			120 lbs.
	1	9 3/4"	18 1/2"	10"			240 lbs.

- Model 205 - Features Friction Slides
- Model 205X - Features Ball-Bearing Slides
- Fits Models 295(X), 297(X), 4410, & 4400MP
- Hangs on Either Side of Your Rolling Cabinet
- Metal Thickness: Body - 18 ga. Drawers - 20 ga.



## 306X 6-DRAWER SIDE CABINET

OVERALL:	DRS.	WIDTH	DEPTH	HEIGHT	NET WT	SHIP WT	CAPACITY
	6	13 3/8"	20"	33 1/8"	94 lbs.	100 lbs.	4,742 cu. in.
DRAWERS:	1	9 3/4"	18 1/2"	2"			120 lbs.
	4	9 3/4"	18 1/2"	4"			120 lbs.
	1	9 3/4"	18 1/2"	10"			240 lbs.

- Hangs on Either Side of Rolling Cabinet
- Ball-Bearing Drawer Slides
- Metal Thickness: Body - 18 ga. Drawers - 20 ga.
- Model 306X - Fits Models 348X, 10494, & 10495



## TB20 20" HANG ON TOOLBOARD PANEL

OVERALL:	DRS.	WIDTH	DEPTH	HEIGHT	NET WT	SHIP WT	CAPACITY
	-	29"	20"	1/2"	7 lbs.	9 lbs.	- cu. in.

- Reversible - Hangs on Either Side of Roller Cabinets
- 10 pc. Toolholder Hook Set (99851)



# 29"

## STAINLESS STEEL

### 28085 5-DRAWER STAINLESS STEEL CABINET WITH TUBULAR LOCK/KEY SET

OVERALL:	DRS.	WIDTH	DEPTH	HEIGHT	NET WT	SHIP WT	CAPACITY
	5	29"	20"	35"	126 lbs.	141 lbs.	10,235 cu. in.
DRAWERS:	1	25"	18 1/2"	2"			120 lbs.
	3	25"	18 1/2"	4"			120 lbs.
	1	25"	18 1/2"	10"			120 lbs.

- 304 Stainless Steel Body And Drawers
- #4 Brushed Finish
- Ball-Bearing Drawer Slides
- 5x1 1/2" Casters with 350 lbs. capacity



### 28087 7-DRAWER STAINLESS STEEL CABINET WITH TUBULAR LOCK/KEY SET

OVERALL:	DRS.	WIDTH	DEPTH	HEIGHT	NET WT	SHIP WT	CAPACITY
	5	29"	20"	35"	145 lbs.	156 lbs.	10,235 cu. in.
DRAWERS:	3	25"	18 1/2"	2"			120 lbs.
	3	25"	18 1/2"	4"			120 lbs.
	1	25"	18 1/2"	6"			120 lbs.

- 304 Stainless Steel Body And Drawers
- #4 Brushed Finish
- Ball-Bearing Drawer Slides
- 5x1 1/2" Casters with 350 lbs. capacity



### 28197 7-DRAWER STAINLESS STEEL CABINET WITH COMBINATION LOCK SET

OVERALL:	DRS.	WIDTH	DEPTH	HEIGHT	NET WT	SHIP WT	CAPACITY
	5	29"	20"	35"	145 lbs.	156 lbs.	10,235 cu. in.
DRAWERS:	3	25"	18 1/2"	2"			120 lbs.
	3	25"	18 1/2"	4"			120 lbs.
	1	25"	18 1/2"	6"			120 lbs.

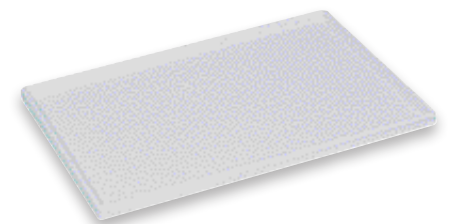
- 304 Stainless Steel Body And Drawers
- #4 Brushed Finish
- Ball-Bearing Drawer Slides
- 5x1 1/2" Casters with 350 lbs. capacity
- Easily Accessible Lock with 2, 3, 4 or 5-Digit Combinations
- No Batteries Required for Operation
- Mechanical Override Key has Dimple Design to Avoid Unauthorized Copying



### 29000 PLASTIC WORK SURFACE

OVERALL:	DRS.	WIDTH	DEPTH	HEIGHT	NET WT	SHIP WT	CAPACITY
	-	29"	20"	1"	3 lbs.	3.5 lbs.	-

- Seamless, ABS White Plastic Cover Fits Snugly Over Roller Cabinet Top
- Quarter-Inch Raised Lip Helps Prevent Roll Offs
- Easy To Clean; Adds Finished Look



# K2000

## CUSTOMIZED TO SUIT YOUR NEEDS

Contact a Kennedy® representative at **800-413-8665**

Customization options include but not limited to:

- Unique drawer configurations
- Custom color and color combinations
- Project planning/ Co-branding available



**BK R BL BUR B YW UB**

STANDARD COLORS

Customize the color of your products. Simply place one of the abbreviations at the end of the model number.

**EXAMPLE:** 520B



**40+ ADDITIONAL**

COLORS AVAILABLE

Custom colors can be matched to suit your project needs.

## INDUSTRY SOLUTIONS



**AEROSPACE**



**AUTO TECH**



**ENERGY**



**CONSTRUCTION**



**FACILITIES  
MANAGEMENT**



**FLEET  
MAINTENANCE**



**FOOD  
PROCESSING**



**GENERAL  
MANUFACTURING**



**MACHINE  
SHOPS**



**MEDICAL/  
PHARMA**



**VOTECH**



**MADE IN THE USA**

[KENNEDYMFG.com](http://KENNEDYMFG.com)

