

TOOL STORAGE ACCESSORIES

>>> EVERY INCH OF OUR PRODUCTS HAVE BEEN COMPLETELY THOUGHT OUT. BECAUSE WE MAKE THEM TOGETHER, THEY WORK TOGETHER, & YOU CAN USE EVERY PART TO GET THE JOB DONE.

MADE
IN THE **USA**

KENNEDY[®]

TOOL BOXES / CHESTS & CABINETS / HIGH DENSITY STORAGE / VISUAL TOOL CONTROL

SECURITY SYSTEMS



Standard Cylinder Lock and Key Sets

- Key your chest and cabinet alike. All locks can be keyed alike.
- Key/Lock Numbers: T1 - T50 Available

Machinists' and Mechanics' Chests:No. 80840

Chest Base Models MC22 and MC28 and Hang-on Models 182(X), 202(X), 302(X) and 382(X):No. 80843

Chest Base Models 2602, 2603, 2604, 2902, 5150; Mechanics' Chests 285(X), 2805(X); 27", 29" and 34" Roller Cabinets; Hang-on Models 185(X), 205(X), 306X, 386X and Versa-Cart® Models 415(X), and 435(X):No. 80844

Additional Keys:No. 80965

Tubular High Security Lock and Key Sets

- All locks can be keyed alike.
- Seven pin tumbler cylinder construction.
- Key/Lock Numbers: KEN1 - KEN200 Available

Machinists' and Mechanics' Chests: Replaces Standard Lock No. 80840:No. 80401

Chest Base Models MC22 and MC28 and Hang-on Models 182(X), 202(X), 302(X) and 382(X) Replaces Standard Lock No. 80843:No. 80402

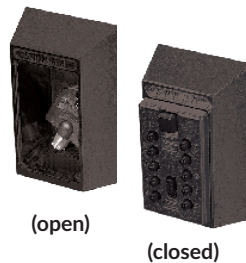
Chest Base Models 2602, 2603, 2604, 2902, 5150; Mechanics' Chests 285(X), 2805(X); 27", 29" and 34" Roller Cabinets; Hang-on Models 185(X), 205(X), 306(X), 386(X); Versa-Cart® Models 415(X), 435(X) and 39", 44", 53" and 58" Maintenance Carts Replaces Standard Lock No. 80844:No. 80403

Additional Keys:No. 80404

Note: For Standard Cylinder Lock Sets and Tubular High Security Lock Sets—Each set includes one lock and two keys. When ordering, specify lock part number, quantity and if keyed alike. To ensure receipt of proper lock, please compare your present lock with photos above.

Keysafe™ by Supra

- Keep your tool box keys convenient and safe.
 - Also use to store house, garage or car keys.
 - Attaches securely and permanently to your chest/cabinet or any wall or flat surface with four screws (included).
 - Black powder coated finish.
 - 1½" W x 1¾" D x 2¼" H.
 - Includes push button combination lock.
-No. 80419



Security Lock Guard

- Provides added protection for your tools.
 - Fits over any Kennedy lock and secures with your own padlock.
-No. 80845



Multi-Lock Security Bar

- Folds over cabinet drawers and locks with padlock.
- Easily attaches to tool boxes.
- Comes with sheet metal screws and instructions.

Fits Model Nos.	Length	No.
263,266,360	12"	80788
2705X, 285(X), 2805(X)		
2812, 2912X, 3412X, TS261X		
185(X), 205(X), 273(X), 275(X)	22½"	80789
277(X), 295(X), 297(X), 310X		
415(X), 435(X), TS265X		
All 54" Work Stations		
All 48" & 60" Versa-Benches		
2702MP, 2907(X), 3412MP, 3407(X)	34½"	80790
376(X), 378(X), 348(X), 315(X)		

Drawer Security Compartment

- For chests & roller cabinets.
- Steel compartments securely fasten to drawer through pre-drilled holes with included ¼" aluminum pop rivets.
- Allows you to lock up personal valuables (wallet, jewelry, cash, keys, etc.) without having to lock up the entire chest or roller cabinet.
- Cylinder lock no. 80840 with two keys.
- Black finish.

5⅝" W x 8⅜" D x 1⅝" H. For drawers 2"H.
.....No. 80475

7⅝" W x 11⅝" D x 2⅝" H. For drawers 4"H.
.....No. 80477



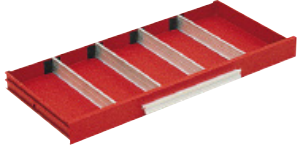
DRAWER LINERS

• Non-Slip Solid Surface • PVC Coated Polyester Fabric • Washable, Mold & Mildew Resistant



No.	Description	Fits:
84008	Liner, 53" K2400 Big Bank Drawer	53000, 53001
84009	Liner, 46" K2400 Chest, Till	46000
84010	Liner, 46" K2400 X-Wide Drawer	46003
84011	Liner, 46" K2400 Big Bank Drawer	46000, 46003
84001	Liner, 62" K2400 Chest, Till	62118
84002	Liner, 60" K2400 Chest, Till	60000
84003	Liner, 60" K2400 X-Wide Drawer	60000, 60121
84004	Liner, 60" K2400 Big Bank Drawer	60000, 60121
84005	Liner, 60" K2400 Equal Bank Drawer	6011ESL
84006	Liner, 53" K2400 Chest, Till	53000
84007	Liner, 53" K2400 X-Wide Drawer	53001
84012	Liner, 46" K2400 Equal Bank Drawer	4611ESL
84013	Liner, K2400 & HMC Small Bank Drawer	62118, 62017, 60000, 60121, 53000, 53001, 46000, 46003, 20200
84014	Liner, 39" K2400	39015EK, 39026EK, 39115EK, 39116EK, 39117EK
84015	Liner, 38" K2400 Tech Cab, Till	38115
84016	Liner, 58" K2000 X-Wide Drawer	5804MP
84017	Liner, 52" K2000 Chest, Till	5207MP
84018	Liner, 52" K2000 X-Wide Drawer	5207MP, 5212MP
84019	Liner, 44" K2000 X-Wide Drawer	4400MP, 4405
84020	Liner, 44" K2000 Small Bank Drawer	4400MP, 4410
84021	Liner, 42" K2000 Chest, Till	4202MP
84022	Liner, 42" K2000 X-Wide Drawer	4200MP
84023	Liner, 39" K2000 Chest, Till	3912MP, 3905MP
84024	Liner, 39" K2000 Drawer	3900MP
84025	Liner, 39" K2000 Chest, Small Drawer	3912MP
84026	Liner, 34" K2000 Chest, Till	3400MP
84027	Liner, 34" K2000 Drawer	3407MP, 348X
84028	Liner, 34" K2000 Chest, Small Drawer	3912MP
84029	Liner, 29" K2000 Chest, Till	2905MP
84030	Liner, 29" K2000 Drawer	2912MP, 2907MP, 2905MP, 295, 295X, 297, 297X, 28085, 28087, 28197, 4410, 4405, 10486, 10494, 10495, 5804MP, 4200MP, 4202MP, 29015EK, 29026EK, 29115EK, 29116EK, 29117EK, 40095, 40096, 40097
84031	Liner, 29" K2000 Chest, Small Drawer	2912MP
84032	Liner, 205 K2000 Drawer	205, 205X, 202X, 302X, 306X
84033	Liner, 53" K1800 Chest, Till	5302MP
84034	Liner, 53" K1800 X-Wide Drawer	5300MP
84035	Liner, 39" K1800 X-Wide Drawer	10493
84036	Liner, 27" K1800 Chest, Till	2705X
84037	Liner, 27" K1800 Drawer	2705X, 285, 285X, 273X, 275X, 277X, 376X, 378X, 305X, 310X, 315X, 308X, 10488, 10489, 10491, 10492, 10493, 2700MP, 2702MP, 5300MP, 5302MP,
84038	Liner, 21" K1800, Work Station, & Tool Stand	21040, 21041, 21042, W5405X, W5410X, TS216X, TS265X
84039	Liner, 185 K1800 Drawer	185, 185X, 386X, 308X, 310X, 315X, 10488, 10492, 10493, 382MP,
84040	Liner, 4800MP X-Wide Drawer	4800MP
84041	Liner, 4800MP Big Bank Drawer	4800MP
84042	Liner, 4800MP Small Bank Drawer	4800MP
84043	Liner, 260 Large Drawer	263, 266, 360
84044	Liner, 260 Small Drawer	266, 360

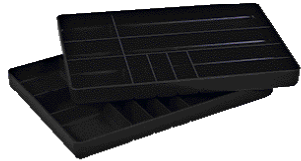
DRAWER ORGANIZERS



Drawer Dividers

- Keeps tools separated and organized.
- Fully adjustable, aluminum dividers.
- Spring clips hold in place.

Fits Model Nos.	Length	Height	Qty.	No.
520	7 ⁵ / ₁₆ "	5 ⁵ / ₈ "	4	80850
526, 52611	7 ⁵ / ₁₆ "	1 ⁷ / ₈ "	1	5/pkg.
3611, 263, 266, 360, 2812				82230
2602, 2603, 2604, 2902, 5150	10 ⁵ / ₈ "	1 ³ / ₈ "	4	4/pkg.
2700MP, 2705(X), 285(X)				
310(X), 315(X)				
2702MP, 273(X), 275(X), 277(X)				
376(X), 378(X), 185(X), 386(X), 415(X)				
All Work Stations & All Tool Stands				
4804, 4806 & all 60" Versa-Benches	16 ³ / ₈ "	3"	2	82232
5300MP	16 ³ / ₈ "	1 ³ / ₈ "	2	4/pkg.
4800MP	23"	3"	2	82233
4810	23"	1 ³ / ₈ "	2	4/pkg.
2805, 205(X), 295(X), 2905(X), 2912(X)				
297(X), 2907X, 3400MP, 3402MP				
3412X, 3407(X), 348(X), 306(X), 3900MP,				
4400MP, 4410, 4405, 435(X)	18 ³ / ₈ "	3"	2	82234
5800MP	18 ³ / ₈ "	1 ³ / ₈ "	2	4/pkg.



Organizer Tray Set

- Neatly holds a multitude of small parts.
- High impact black polystyrene.
- 10 compartments per tray.
- Tray size: 16 W x 11 D x 1¹/₄" H.

Two Trays..... No. 82223

One Tray..... No. 82222



Sliding Steel Drawer Tray

- Slides freely in drawer.
 - Tan Texture finish.
 - For 4" deep or deeper drawers.
- (For drawers 23 in. wide).....No. 80870
 (For drawers 25 in. wide).....No. 80873
 (For drawers 30 in. wide).....No. 82160



Chest/Cabinet Foam Tool Organizer

- Notice missing tools at a glance.
- 3/8" thick foam cut to fit drawer sizes (three sheets per package)

- To install, simply lay tools on foam and trace around them with a hot pencil tip soldering iron. Remove unwanted material and place tool in pocket.

Fits Model Nos.	Width	Length	No.
2602, 2603, 2604	10 ³ / ₄ "	x 22 ⁷ / ₈ "	80780
263, 266, 360			
2812	10 ³ / ₄ "	x 29 ⁷ / ₈ "	80781
2702MP, 273(X), 275(X)			
277(X), 376X, 378X, 285(X)			
2705X, 2700MP	16 ¹ / ₂ "	x 23"	80782
2805(X), 2905(X), 2912(X)			
295(X), 297(X), 2907(X)	18 ¹ / ₂ "	x 25"	80786
3402MP, 3407(X), 3412(X)			
348(X), 3400MP	18 ¹ / ₂ "	x 30"	80787



ABS Plastic Drawer Organizer

- Organize, separate and arrange tools.
- Helps maximize drawer space.
- Made of durable ABS plastic.
- Round-cornered compartments for quick, easy retrieval of small parts.
- Fit either 2", 4" or larger drawers.

- One-piece design for 27" & 29" wide cabinets.
- Two-piece design for 34" wide cabinets.

Divider Insert Description	For 27" Cab. No.	For 29" Cab. No.	For 34" Cab. No.	5 ¹ / ₂ " Adder Only, No.
2" Dr., 24 Comp.	81923	81929	81935	81939
2" Dr., 6 Comp.	81921	81927	81933	
2" Dr., 11 Comp.	81922	81928	81934	
4" Dr., 4 Comp.	81924	81930	81936	81940
4" Dr., 12 Comp.	81926	81932	81938	
4" Dr., 7 Comp.	81925	81931	81937	

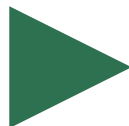
- Sold per piece, not as a kit.

PURCHASE NOW



Credit Card, PayPal and Financing with Affirm are available at time of check out.

Product Registration
 Purchase Accessories
 Promotions & Discounts



KENNEDYMFG.COM

MISCELLANEOUS ACCESSORIES



Aluminum Drawer Pulls

- Made of extruded aluminum.
- Won't rust, crack, or peel.

- (Set of 6) 5" drawer pulls plus 12 screws/pkg.....No. 80885
- (Set of 5) 10" drawer pulls plus 10 screws/pkg.....No. 80886
- (Set of 3) 23" drawer pulls plus 12 screws/pkg.....No. 82118
- (Set of 3) 25" drawer pulls plus 12 screws/pkg.....No. 82119
- (Set of 3) 30" drawer pulls plus 12 screws/pkg.....No. 82120



Wrench Rack

- Holds and organizes up to 15 wrenches.
- Can be stored in a drawer or hung on the wall.
- Rests on foam pads.
- Made of lightweight, durable 3/16" molded black plastic.
- Tools not included.

.....No. 80874

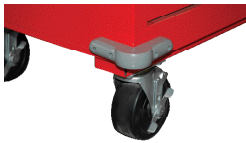


Magnetic Parts Tray

Tray dimensions, 9½ x 5½ x 1¼

- Heavy-duty magnets hold nuts, bolts, etc. in place to make fix-it jobs easier.
- Magnetized tray back sits securely on metal surfaces.

.....No. 80481



Roller Cabinet Corner Bumpers

- Hard rubber bumpers protect against dents and scrapes when changing work sites.
- Four easy-to-install screw fasteners included.

.....No. 80485



Spray Cans

- Red.....No. 80859
- Brown.....No. 80860
- Gray.....No. 80861
- Black.....No. 80862
- Yellow.....No. 82176
- Burgundy.....No. 82201
- Classic Blue.....No. 82211
- Black.....No. 82203
- Tan.....No. 82209



Touch-up Bottles

- Red.....No. 82173
- Brown.....No. 82174
- Yellow.....No. 82175
- Classic Blue.....No. 82210
- Black.....No. 82202
- Tan.....No. 82208
- Utility Blue.....No. 80906

Touch Up Paint

- Touch up scratches and minor abrasions.
- All paints create a smooth finish
- 12 ounce aerosol can or 0.6 ounce liquid bottle.
- Not for large area coverage.



Ergonomic Handle for Cabinets

- Full-size, soft rubber handle is ergonomically designed for comfort and stability.
- Attaches to either side of any Kennedy 27", 29", 34", 44", 46", 53", 60" or 62" roller cabinet.

.....No. 80807



Tubular Handle for Cabinets

- Full-size, chrome plated tubular handle attaches to either side of any Kennedy 27", 29", 34" or 44" roller cabinet.

Hole Center distance of 15¼".....No. 82245

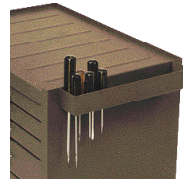
Hole Center distance of 11¼".....No. 82248

Hole Center distance of 16¾".....No. 82249

Tubular End Handle – Assembly requires flat tip screwdriver.

Mount end handle on same end as swivel casters.

Bracket holes must line up to double set of holes in body. Attach each bracket with (2) ¼" x ½" screws.



Screwdriver Tray

- Attaches to any Kennedy roller cabinet for easy access to screwdrivers.
- Also holds standard aerosol spray cans.
- Tools not included.

Brown Finish.....No. 80876

Red Finish.....No. 80878



Hang-on Storage Rack

- Keeps tools handy and organized.
- Hangs on roller cabinets, service carts, parts washers, etc.
- Install or remove in seconds.

16" W x 6" D x 2" H.....No. 80996

20" W x 6" D x 2" H.....No. 80997

KENNEDY®

ROLLER CABINET DRAWER SLIDES AND CASTERS

SLIDES

Part #	Fits Models:	H x L
80887	620, 520, 526, 52611, 220, MC22, MC28	
80888	2005, 2812, 263, 266, 360, 2602, 2603, 2604, 2902, 3611, 5150	
80889	27", 29" & 34" Roller Cabinets, 6 & 12 Drawer Versa-Benches, All Tool Stands	1-19/64" x 14-3/4"
82183	Replaces existing ball bearing slides. Or, interchangeable with I-beam slides in units manufactured after April, 1996.	1-13/16" x 16-5/16"
82186	Replaces existing ball bearing slides. Or, interchangeable with I-beam slides in units manufactured after April, 1996.	1-13/16" x 22"
82187	Snap In Slides: 285, 273, 275, 277, 376, 378, 310, 315, 185, 386, Tool Stands & Work Stations	
82189	Snap in Slides: 2805, 2905, 3405, 293, 295, 297, 348, 205, 306	

Standard Friction Drawer Slides

- Two-piece, I-beam drawer slides permit smooth, easy full-drawer extension.
- Package includes 4 female and 2 male slides with spring clips

Nos. 80887, 80888 and 80889



Snap-in Friction Drawer Slides

- Package includes 4 female and 2 male slides.

Nos. 82187 and 82189



Ball-Bearing Drawer Slides

- Three-member, full extension ball bearing slides permit effortless, feather-light movement.
- Package includes one left and one right hand slide.

No. 82183 and 82186



ROLLER CABINET CASTERS

Part #	Description	Weight Capacity Total	Bearing	Material	Dia.	W	H
80835	5 x 1-1/4 Caster Set, (2)R (2)S	800 lbs.	Sintered	Rubber	5"	1-1/4"	6"
Standard for: 21040, 21041, 21042, 273(X), 275(X), & 277(X) Fits: 293(X), 295(X), 297(X), 2907X, 3407X, 376(X), 378(X), 310(X), 315(X), 10491, 10493, 28085, 28087, & 28197 Fits Benchmark® Roller Cabinets Mfged. Before 12/31/02 and 10494 & 10495 Roller Cabinets Mfged After 9/6/2016							
80837	5 x 2 Caster Set, (2)R(2)S	1400 lbs	Roller	Rubber	5"	2"	6"
Standard for 293(X), 295(X), 297(X), 2907X, 3407X, 376(X), 378(X), 310(X), 315(X), 10491, & 10493 Standard for 10494 & 10495 Roller Cabinets Mfged After 9/6/2016 Fits 21040, 21041, 21042, 273(X), 275(X), 277(X), 28085, 28087, & 28197 Fits Benchmark® Roller Cabinets Mfged. Before 12/31/02							
80977	5 x 2 Caster Set, (2)S	700 lbs	Roller	Rubber	5"	2"	6"
Standard for 410, 415(X), 430, and 435(X) Vera-Carts®							
80985	5 x 1-1/2 Caster Set, (2)R(2)S	1800 lbs	Sintered	Polyurethane	5"	1-1/2"	6-1/4"
Standard for 28085, 28087, and 28197 Fits 21040, 21041, 21042, 273(X), 275(X), 277(X), 293(X), 295(X), 297(X), 2907X, 3407X, 376(X), 378(X), 310(X), 315(X), 10491, & 10493 Fits Benchmark® Roller Cabinets Mfged. Before 12/31/02 and 10494 & 10495 Roller Cabinets Mfged After 9/6/2016							
80980	6 x 2 Caster Set, (2)R(2)S	2100 lbs.	Roller	Phenolic	6"	2"	7-1/2"
Standard for Benchmark® Roller Cabinets Mfged. Before 12/31/02 Fits 21040, 21041, 21042, 273(X), 275(X), 277(X), 293(X), 295(X), 297(X), 2907X, 3407X, 376(X), 378(X), 310(X), 315(X), 10491, 10492, & 10493 Fits 10494 & 10495 Roller Cabinets Mfged After 9/6/2016							
80930	6 x 2 Caster Set, (2)R(2)S	2800 lbs.	Roller	Phenolic	6"	2"	7-1/2"
Standard for 2702MP, 2907MP, 3407MP, 3900MP, 4202MP & Benchmark® Roller Cabinets Mfged. After 1/1/03 Standard for 10494 & 10495 Roller Cabinets Mfged. Before 9/6/2016							
80982	6 x 2 Caster Set, (4)S	2800 lbs	Roller	Phenolic	6"	2"	7-1/2"
Standard for 4400MP, 4410, 5207MP, 5300MP, 5804MP							
80976	10" Wheel	500 lbs	Roller	Rubber	10"	2-1/4"	-
Standard for 4400MP, 4410, 5207MP, 5300MP, 5804MP							
82290	Benchmark® Caster Set w/ Center Axle	2800 lbs	Roller	Phenolic	6"	2"	7-1/2"
Upgrades 38016, 38018, 38028, 45016, 45018, 45028, 46003, 53001, 60121, & 62017 Benchmark® Roller Cabinets to Center Axle Formation							
80838	8 x 2 Caster Set, (2) S	1800 lbs.	Roller	Phenolic	8"	2"	9-1/2"
Upgrades Versa-Bench® Models 6006, 6012S, 6012E, 4804, 4806, 4810, & 4800MP to 6-Caster Formation							
80839	8 x 2 Caster Set, (2)R(2)S	3600 lbs.	Roller	Phenolic	8"	2"	9-1/2"
Standard for Versa-Bench® Models 6006, 6012S, 6012E, 4804, 4806, 4810, & 4800MP							
80828	Versa® Bench Floor Lock	-	-	-	-	-	7-1/2"
Standard for Kennedy Versa-Benches® Mfged. After 2/1/2015							
80841	Versa® Bench Floor Lock	-	-	-	-	-	7-1/2"
Standard for Kennedy Versa-Benches® Mfged. Before 2/1/2015							

ROLLER CABINET WORK SURFACES

If you do not see your cabinet model listed below, contact Customer Service at 1.800.413.8665 for further work surface options.



Maple Work Surface

- 1½" thick butcher block maple top.
- Full-length laminations specially selected for grain and color match.

- Kitchen counter quality for years of fine use.
- Comes with care instructions.

Width	Depth	Height	Fits Model Nos.	Maple Top No.
13 3/8"	17 3/4"	1 1/2"	185(X), 415(X), 386X	80380
26 3/4"	17 3/4"	1 1/2"	285(X), 273(X), 275(X), 277(X), 376X, 378X	80882
13 3/8"	19 3/4"	1 1/2"	205(X), 435(X), 306X	80381
28 3/4"	19 3/4"	1 1/2"	2805(X), 295(X), 297(X), 2907X	80883
33 3/4"	19 3/4"	1 1/2"	3407X, 348X	80884
43 5/16"	19 11/16"	1 1/2"	4405, 4410, 4400MP, 4405MP	80382
39"	17 3/4"	1 1/2"	310X, 315X	80880



Resistop Work Surface

- Solid phenolic, non-conductive black surface.

- Durable, high impact and shock resistant.
- Stain, chemical and corrosion resistant.

Width	Depth	Height	Fits Model Nos.	Resistop No.
13 3/8"	17 3/4"	1 1/2"	185(X), 415(X), 386X	82101
26 3/4"	17 3/4"	1 1/2"	285(X), 273(X), 275(X), 277(X), 376X, 378X	82104
13 3/8"	19 3/4"	1 1/2"	205(X), 435(X), 306X	82102
28 3/4"	19 3/4"	1 1/2"	2805(X), 295(X), 297(X), 2907X	82105
33 3/4"	19 3/4"	1 1/2"	3407X, 348X	82106
43 5/16"	19 11/16"	1 1/2"	4405, 4410, 4400MP, 4405MP	82103
39"	17 3/4"	1 1/2"	310X, 315X	82107



Coated Work Surface

- Durable, coated MDF work surface protects cabinet top.

- Textured, nonporous coating is easy to clean and won't crack or warp.
- Non-skid texture keeps tools in place.

Width	Depth	Height	Fits Model Nos.	Coated Work Surface No.
38 7/8"	19 3/4"	1"	3900MP	80391
43 5/16"	25 7/8"	1"	4400MP, 4410	80392
47 7/8"	25 7/8"	1"	4800MP, 4810	80393
52 5/8"	17 3/4"	1"	5300MP	80394
56 7/8"	19 3/4"	1"	5804MP	80395



Cabinet Plastic Work Surface

- Seamless, ABS black plastic cover fits snugly over roller cabinet top.
- 3/4" raised lip helps prevent roll offs.
- Easy to clean, adds finished look.

For cabinets 27" wide x 18" deepNo. 82170
 For cabinets 29" wide x 20" deepNo. 82171
 For cabinets 34" wide x 20" deepNo. 82172



Cabinet Top Mat

- Protects against scuffs and abrasions.
- Reduces chest movement.
- Black vinyl pre-cut mat .075 in. thick.

Fits Model Nos.	Width	Depth	No.
4405, 4410	43 5/16"	19 11/16"	80808
185(X), 415(X), 386(X)	13 3/8"	17 3/4"	82089
205(X), 435(X), 306(X)	13 3/8"	19 3/4"	82088
285(X), 273(X), 275(X), 277(X), 376(X), 378(X)	26 3/4"	17 3/4"	82091
3407(X), 348(X)	33 3/4"	19 3/4"	82092
2805(X), 295(X), 297(X), 2907(X)	28 3/4"	19 3/4"	82093
310(X), 315(X)	39"	17 3/4"	82099



Deluxe, Heavy-Duty Cabinet Top Mat

- Black vinyl mat is 50% thicker than our regular mat.
- Lays flat with more rigidity.
- Pyramid shape embossing increases friction, reduces slipping.
- Long wearing, resists oil.

Fits Model Nos.	Width	Depth	No.
185(X), 415(X), 386(X)	13 3/8"	17 3/4"	80440
205(X), 435(X), 306(X)	13 3/8"	19 3/4"	80441
285(X), 273(X), 275(X), 277(X)	26 3/4"	17 3/4"	80455
376(X), 378(X)	28 3/4"	19 3/4"	80456
2805(X), 295(X), 297(X), 2907(X)	33 3/4"	19 3/4"	80458
3407(X), 348(X)	39"	17 3/4"	80457
310(X), 315(X)	43 5/16"	19 11/16"	80459
4405, 4410, 4400MP, 4405MP			

ASSEMBLING YOUR KENNEDY® CABINET

Casters—Assembly requires flat tip screwdriver and ½" socket or ½" open end wrench.

(2) rigid and (2) swivel with toe brakes, bolts, lock washers and hex nuts furnished for assembly to cabinet.

Unit with bottom front panel - open bottom drawer, lift and open panel for caster mounting.

Units with full drawers - bottom drawer must be removed for caster mounting.

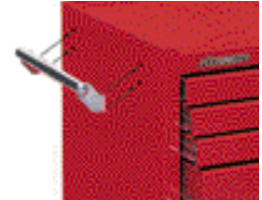
Lay cabinet on its back when mounting casters. Line up caster holes to bottom pan or reinforcement rail and fasten with round head of bolt to the outside.



Tubular End Handle – Assembly requires flat tip screwdriver.

Mount end handle on same end as swivel casters.

Bracket holes must line up to double set of holes in body. Attach each bracket with (2) ¼" x ½" screws.



Keep Your Kennedy® Operating Like New

Slides—A light coating of oil on the friction slides will preserve and provide easy movement of parts.

Cleaning of Finish—Your Kennedy wrinkle finish unit can be cleaned periodically with WD-40 or Murphy's Oil Soap. Smooth finish units should be cleaned with a soft cloth, dampened with warm water.

Have you registered your Kennedy®?

Go to www.kennedymfg.com/product-registration/ follow the prompts to file your registration online.



LIMITED WARRANTY

Kennedy® Manufacturing Company products are warranted by Kennedy Manufacturing Co., Van Wert, Ohio, against defects in workmanship as long as you own the product. This is a limited lifetime warranty. Kennedy® will repair or replace any products which fail to give satisfactory service due to defective workmanship or materials. Kennedy® will not warranty any product subjected to abnormal use. Abnormal use includes unreasonable use, misuse, neglect, lack of maintenance or modification.

LIMITATION OF LIABILITY

To the extent allowable under applicable law, Kennedy's liability for consequential and incidental damages is expressly disclaimed. Kennedy's liability in all events is limited to, and shall not exceed, the purchase price.

