



# SERVICE PARTS LIST

**BULLETIN NO.**  
**54-05-0020**

SPECIFY CATALOG NO. AND SERIAL NO. WHEN ORDERING PARTS		REVISED BULLETIN	DATE
<b>M12™ HammerVAC™ Dust Extractor</b>			Feb. 2020
<b>CATALOG NO.</b>	<b>2509-20</b>	<b>SERIAL NUMBER</b>	<b>L27A</b>
			<b>WIRING INSTRUCTION</b> <b>See Page 2</b>

**Note:**  
Lightly coat O-Ring #13 with 'L' Grease (49-08-4175) to aid in the installation onto Nozzle Base #12.

**EXAMPLE:**  
Component Parts (Small #)  
Are Included When Ordering  
The Assembly (Large #).

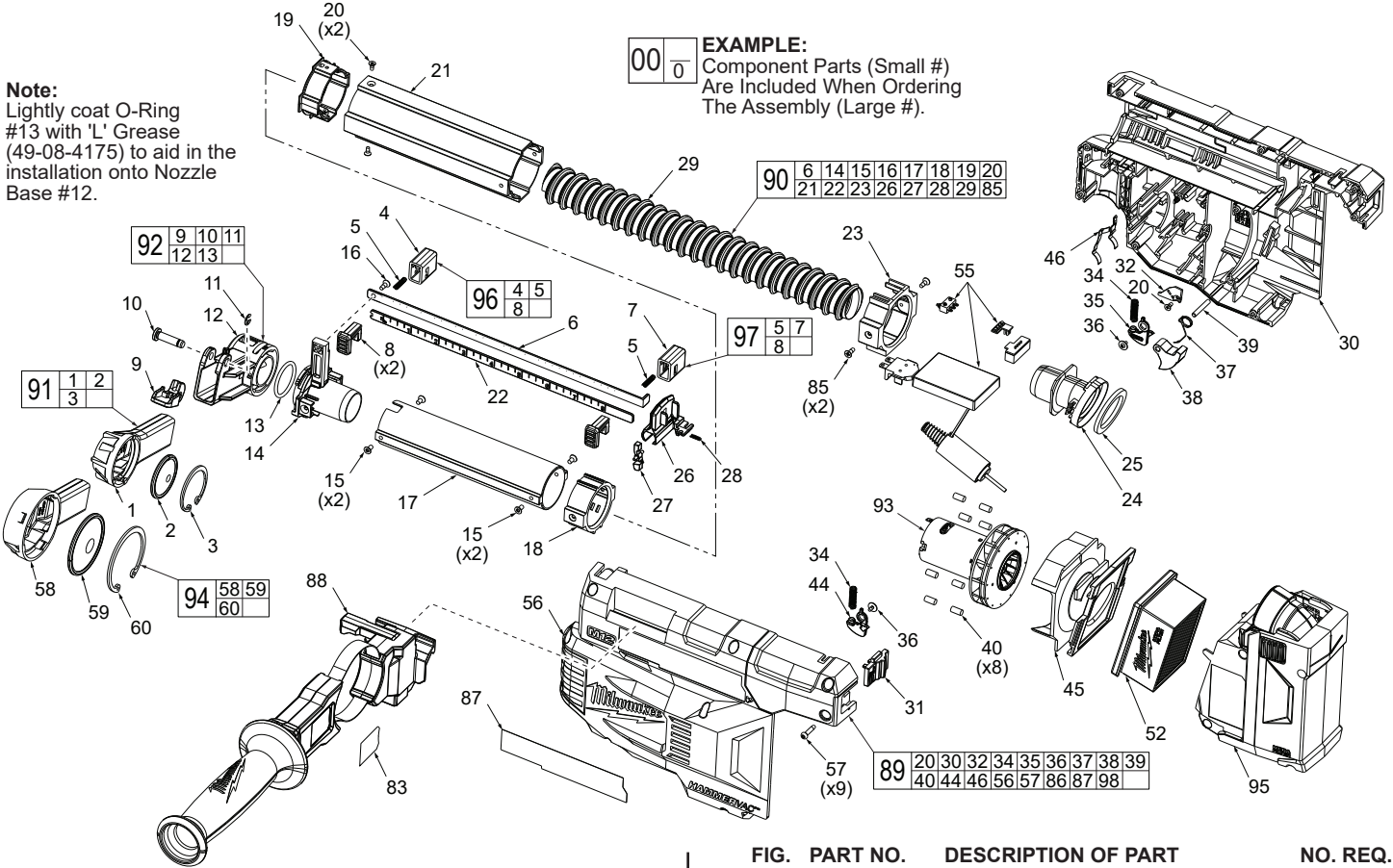


FIG.	PART NO.	DESCRIPTION OF PART	NO. REQ.
1	31-01-0213	Nozzle	(1)
2	43-31-0475	Hair Brush	(1)
3	34-60-0995	Retaining Ring	(1)
4	42-30-0170	Front Depth Stopper Body	(1)
5	40-50-8952	Spring	(2)
6	44-66-6320	Depth Plate	(1)
7	42-30-0155	Back Depth Stopper Body	(1)
8	42-42-3076	Depth Stopper Button	(2)
9	31-52-0130	Cam Lock Lever	(1)
10	44-60-5320	Retaining Pin	(1)
11	34-60-0770	E-Ring	(1)
12	31-06-0280	Nozzle Base	(1)
13	34-40-0990	O-Ring	(1)
14	31-12-0725	Tube Cap	(1)
15	05-80-0025	M3 x 6mm Flat Hd. Phillips Screw	(4)
16	05-78-0088	M3 x 8mm Flat Hd. Phillips Screw	(1)
17	42-30-0165	Front AL Tube	(1)
18	42-40-3006	Bushing for Front Tube	(1)
19	42-40-3007	Bushing for Rear Tube	(1)
20	45-04-1150	M2.6 x 6mm Flat Hd. Phillips Screw	(3)
21	42-30-0160	Rear Tube	(1)
22	44-66-6325	Ruler	(1)
23	42-40-3005	Rear Bushing	(1)
24	31-03-5005	Dust Outlet	(1)
25	43-44-7085	Gasket	(1)
26	43-56-0920	Depth Plate Guide	(1)
27	31-92-0425	Auto Trigger	(1)
28	40-50-8953	Spring	(1)
29	45-76-2725	Spring Tube	(1)
30	45-60-0725	Housing Support	(1)
31	42-42-3075	Switch Trigger	(1)
32	31-15-2190	Wire Cover	(1)
34	40-50-8954	Spring	(2)
35	28-14-9020	Filter Detector Support Side	(1)
36	05-81-0542	M2.3 Screw	(2)
37	40-50-8951	Torsion Spring	(1)
38	42-46-0270	Bell Crank	(1)
39	44-60-5325	Pin for Bell Crank	(1)
40	45-30-0003	Isolator	(8)
44	28-14-9015	Filter Detector Cover Side	(1)
45	31-15-2193	Filter Plate	(1)
46	42-70-0480	Spring Clip	(1)
52	49-90-2306	Filter	(1)
55	22-06-0165	PCBA Assembly	(1)
56	31-15-2195	Housing Cover	(1)
57	06-82-1080	M3 Screw	(9)
58	31-01-0212	Stop Bit Nozzle	(1)
59	43-31-0470	Hair Brush	(1)
60	34-60-7080	Retaining Ring	(1)
83	10-20-4344	Side Handle Label	(1)
85	06-81-5381	M3 x 6mm Pan Hd. Phillips Screw	(2)
86	12-20-2519	Service Nameplate (Not Shown)	(1)
87	10-20-7016	Long Warning Label	(1)
88	14-48-0150	Side handle Assembly	(1)
89	14-38-3005	Housing Assembly	(1)
90	45-76-2730	Dust Tube	(1)
91	14-52-0105	Nozzle Assembly	(1)
92	42-20-0615	Nozzle Base Assembly Standard	(1)
93	14-50-2720	Fan and Motor Assembly	(1)
94	14-52-0110	Nozzle Assembly Stop Bit	(1)
95	42-16-0580	Dust Box Assembly	(1)
96	42-42-3077	Front Depth Button Assembly	(1)
97	42-42-3078	Rear Depth Button Assembly	(1)
98	10-20-7013	Warning Label (Not Shown)	(1)

# Wire Routing

Wire Traps or Channels

Wire Traps or Channels

Wire Traps or Channels

Wire Traps or Channels

