



SERVICE PARTS LIST

BULLETIN NO.
54-05-0070

SPECIFY CATALOG NO. AND SERIAL NO. WHEN ORDERING PARTS		REVISED BULLETIN	DATE
M12™ Stick Transfer Pump			Feb. 2022
CATALOG NO. 2579-20	STARTING SERIAL NO.	M33A	
		WIRING INSTRUCTION Page 2	

EXAMPLE:
Component Parts (Small #) Are Included When Ordering The Assembly (Large #).

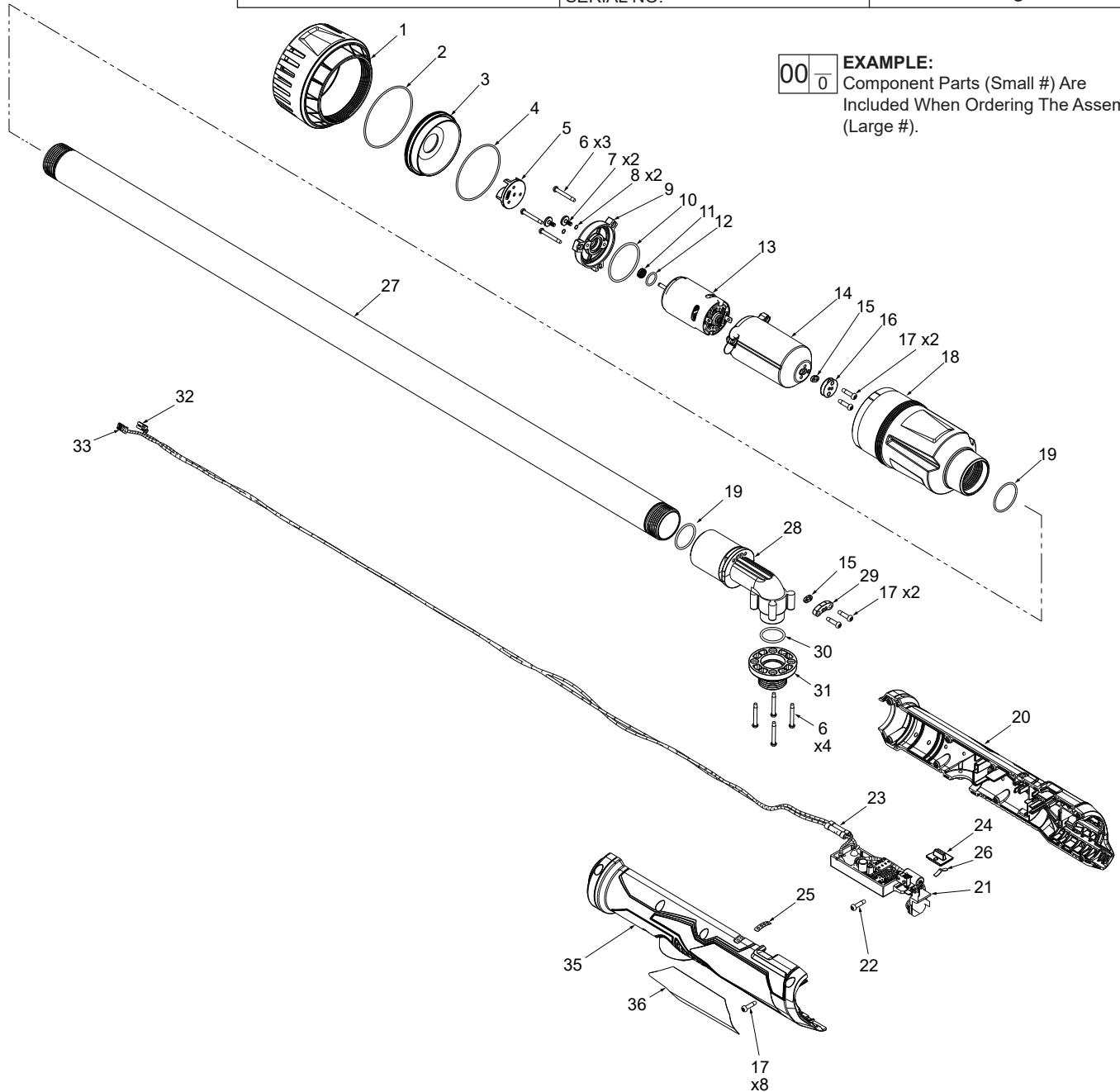
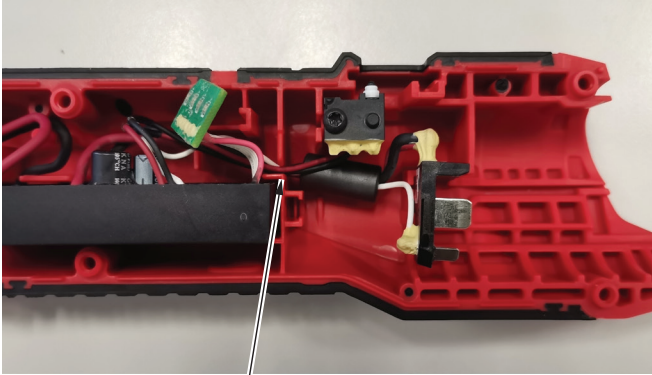


FIG.	PART NO.	DESCRIPTION OF PART	NO. REQ.
1	43-31-0031	Filter	1
2	34-40-0148	O-Ring	1
3	31-05-0043	Volute Cap	1
4	34-40-0149	O-Ring	1
5	22-08-0010	Impeller	1
6	05-78-2214	M3 x 25mm T-10 Taptite Screw	7
7	05-88-0198	M3 x 8.5mm T-10 Mach. Screw	2
8	34-40-1905	O-Ring	2
9	30-16-2028	Motor Cap	1
10	34-40-0152	O-Ring	1
11	45-06-0019	Lip Seal	1
12	34-40-0153	O-Ring	1
13	23-30-0128	Motor	1
14	31-50-0232	Motor Housing	1
15	42-28-0078	Rubber Block	2
16	44-66-0138	Sealing Plate	1
17	05-88-0199	M3.5 T-15 ST Screw	12
18	31-44-2507	Outer Motor Housing	1
19	34-40-0076	O-Ring	2
20	31-44-2508	Handle Support	1

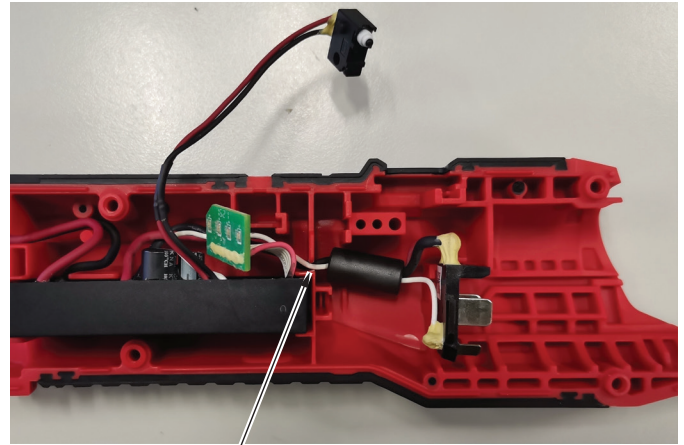
FIG.	PART NO.	DESCRIPTION OF PART	NO. REQ.
21	14-20-2579	PCBA Assembly	1
22	06-82-1087	M3 x 12mm ST Screw	1
23	22-56-0122	Wire Connector	2
24	42-42-2579	Slide Button	1
25	10-20-4351	Fuel Gauge	1
26	40-50-0027	Spring Plate	1
27	45-76-0303	Aluminum Tube	1
28	42-86-0078	Hose Connector	1
29	44-66-0128	Retaining Plate	1
30	34-40-0154	O-Ring	1
31	42-90-0225	Hose Fitting	1
32	23-94-1280	Black Wire	1
33	23-94-1285	Red Wire	1
35	31-44-2509	Handle Cover	1
36	12-20-2579	Service Nameplate	1

1. Wire routing for Micro Switch



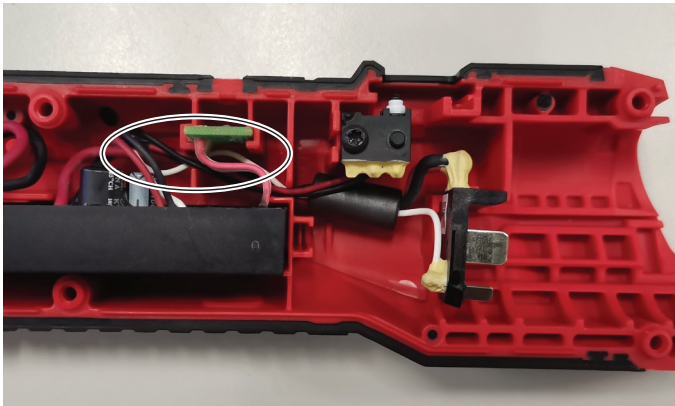
Trap or channel

2. Wire routing for Terminals

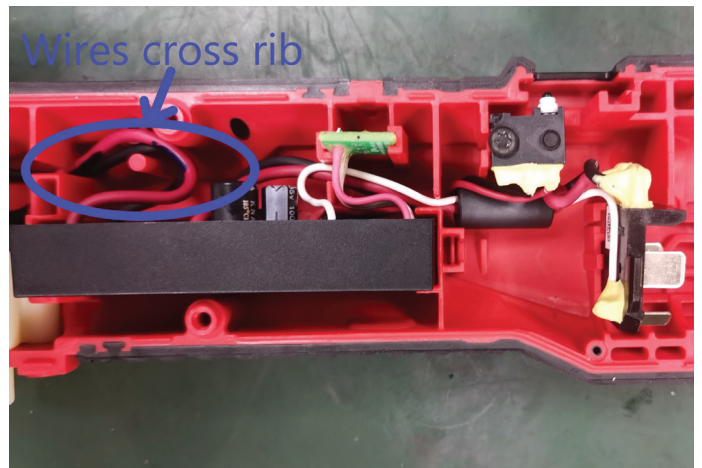


Trap or channel

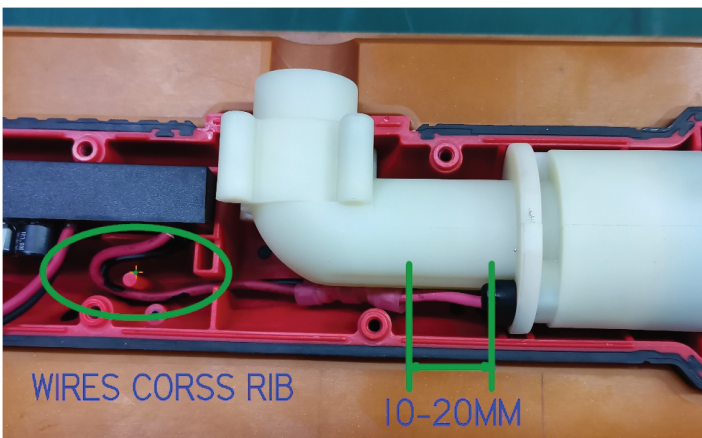
3. Wire routing for FUEL Gauge



4. Wire routing of Motor wires should cross the ribs of handle halves.



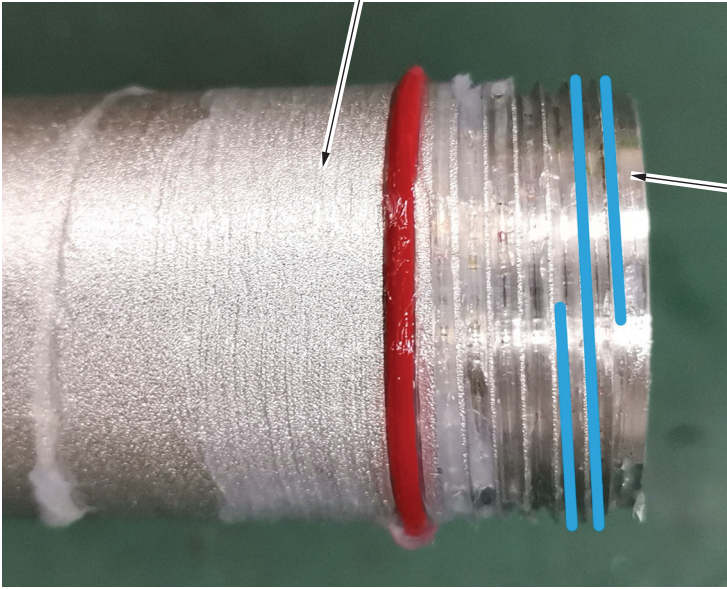
5. Clearance of wire connectors and seal plate should be 10-20mm.



SCREW TORQUE SPECIFICATIONS			SEAT TORQUE	
FIG.	PART NO.	WHERE USED	(KG/CM)	(IN/LBS)
1	43-31-0031	Outer Motor Housing	25	22
6	05-78-2214	Motor Cap	12	10
7	05-88-0198	Motor Cap	8	7
17	05-88-0199	Sealing Plate	10	8
18	31-44-2507	Al Tube	115	99
22	06-82-1087	Handle Support	4	3
28	42-86-0078	Al Tube	55	47

Lubrication

Apply 0.75g of of Type "J" Grease (49-08-4220) to each rear thread of Aluminum tube.



Apply 0.5g of 416 Loctite to each thread of Aluminum tube before assembling Outer Motor Housing (18) and Hose Connector (28).