



# SERVICE PARTS LIST

**BULLETIN NO.**  
**54-05-5330**

SPECIFY CATALOG NO. AND SERIAL NO. WHEN ORDERING PARTS		REVISED BULLETIN	DATE
<b>BREAKER BOOT</b>			Jan. 2020
<b>CATALOG NO.</b> <b>5321-DE</b>	<b>STARTING SERIAL NO.</b>	WIRING INSTRUCTION	

**EXAMPLE:**  

00	0
----	---

 Component Parts (Small #)  
 Are Included When Ordering  
 The Assembly (Large #).

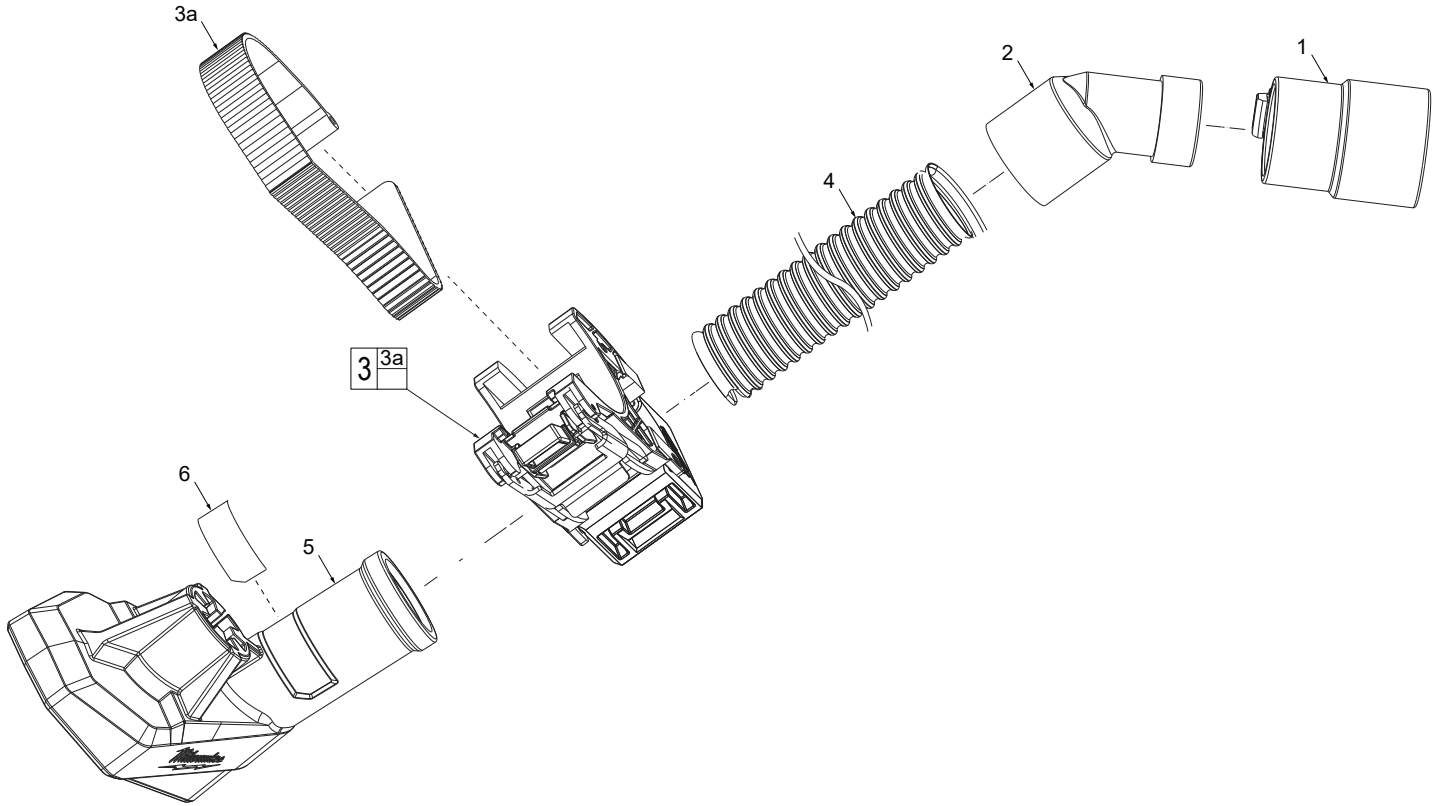


FIG.	PART NO.	DESCRIPTION OF PART	NO. REQ.
1	49-90-1959	Hose Clip Adaptor	(1)
2	42-86-0022	Hose Connector	(1)
3	14-04-0120	Bracket Sub Assembly	(1)
3a	42-70-0073	Belt	(1)
4	14-37-0135	Hose	(1)
5	31-55-0032	Breaker Boot	(1)
6	12-25-0348	Nameplate	(1)

**FIG. NOTES**

6 A clean, dry surface is essential for proper performance for any adhesive system. The area intended for application of any adhesive label or nameplate must be prepared by cleaning with isopropyl alcohol. The solvent is to be applied with a clean, lint free applicator and the surface allowed to dry before applying the label or nameplate.