



# SERVICE PARTS LIST

**BULLETIN NO.**  
54-43-0015

SPECIFY CATALOG NO. AND SERIAL NO. WHEN ORDERING PARTS		REVISED BULLETIN	DATE
<b>ROUND HEAD FRAMING NAILER</b>			Oct. 2015
CATALOG NO. 7200-20	STARTING SERIAL NUMBER	<b>G98A</b>	
		WIRING INSTRUCTION	

**EXAMPLE:**  
Component Parts (Small #) Are Included  
When Ordering The Assembly (Large #).

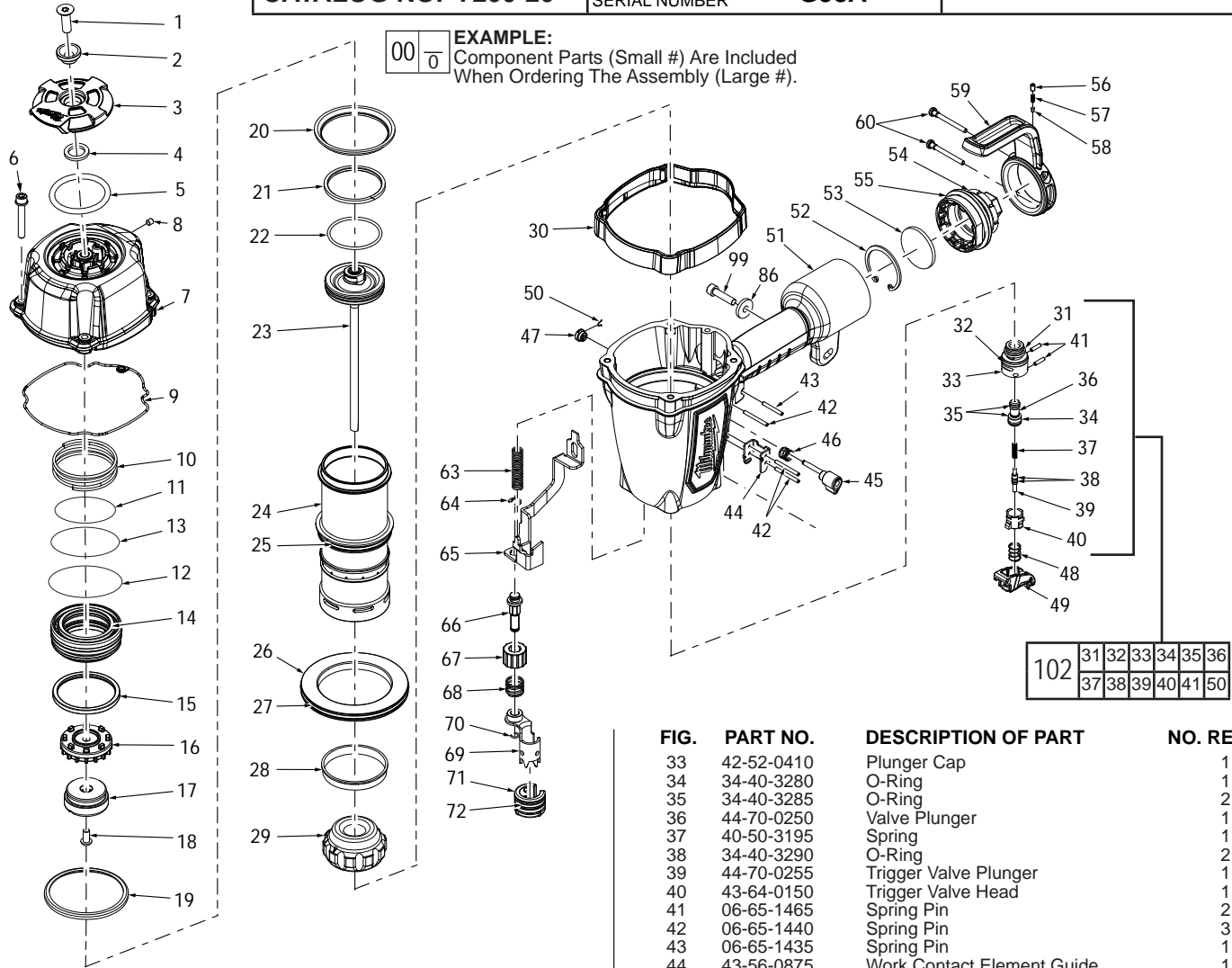


FIG.	PART NO.	DESCRIPTION OF PART	NO. REQ.
1	05-84-0945	Deflector Bolt	1
2	45-88-1725	Deflector Screw Pad	1
3	31-05-0410	Deflector	1
4	45-88-1715	Deflector Pad	1
5	43-31-0350	Muffler Assembly	1
6	05-84-0865	Bolt Assembly w/Washer	4
7	42-92-1430	Top Cap	1
8	05-84-0955	Set Screw, M5 x 0.8-5	1
9	45-06-0900	Top Cap Seal	1
10	40-50-3115	Upper Valve Spring	1
11	34-40-3255	O-Ring, 43.5 mm x 2.62 mm	1
12	34-40-3230	O-Ring, 60.2 mm x 3.1 mm	1
13	34-40-3260	O-Ring, 47.8 mm x 2.62 mm	1
14	44-62-0255	Head Valve Piston	1
15	42-76-0805	Valve Collar	1
16	31-94-0100	Valve	1
17	45-06-0930	Seal	1
18	05-83-0520	Hex Bolt, M6 x 1.0-12	1
19	44-90-0745	Steel Press Ring	1
20	44-90-0735	Press Ring	1
21	44-90-0810	Piston Ring	1
22	34-40-3135	O-Ring	1
23	43-12-0260	Driver Assembly	1
24	42-98-0360	Cylinder	1
25	34-40-3140	O-Ring	1
26	44-90-0795	Cylinder Spacer	1
27	34-40-3150	O-Ring	1
28	44-90-0720	Cylinder Ring	1
29	42-38-0310	Bumper	1
30	42-38-0375	Bumper Band	1
31	34-40-3295	O-Ring	1
32	34-40-3300	O-Ring	1

FIG.	PART NO.	DESCRIPTION OF PART	NO. REQ.
33	42-52-0410	Plunger Cap	1
34	34-40-3280	O-Ring	1
35	34-40-3285	O-Ring	2
36	44-70-0250	Valve Plunger	1
37	40-50-3195	Spring	1
38	34-40-3290	O-Ring	2
39	44-70-0255	Trigger Valve Plunger	1
40	43-64-0150	Trigger Valve Head	1
41	06-65-1465	Spring Pin	2
42	06-65-1440	Spring Pin	3
43	06-65-1435	Spring Pin	1
44	43-56-0875	Work Contact Element Guide	1
45	44-10-0655	Selector	1
46	40-50-3095	Selector Spring	1
47	44-86-0710	Retainer	1
48	40-50-3160	Trigger Spring	1
49	31-92-0200	Trigger Assembly	1
50	44-90-0825	Ring	1
51	28-50-0810	Tool Body	1
52	44-90-0755	Retaining Ring	1
53	43-31-0375	Filter	1
54	42-92-1360	End Cap	1
55	34-40-3225	O-Ring	1
56	05-84-0950	Socket Hex Head Screw	1
57	40-50-3180	Spring	1
58	45-08-0460	Positioning Shaft	1
59	42-70-0405	Spring Retainer (Rafter Hook)	1
60	05-83-0535	Round Head Phillips Bolt	2
63	40-50-3070	Work Contact Spring	1
64	44-90-0775	E-Ring	1
65	42-36-2010	Work Contact Bracket B	1
66	44-94-0550	Adjustment Rod Assembly	1
67	43-98-0750	Adjustment Knob	1
68	40-50-3175	Adjustment Spring	1
69	42-36-2000	Work Contact Bracket A	1
70	44-90-0705	Ring	1
71	42-38-0330	No-Mar Pad	1
72	44-90-0715	Fixed Ring	1
86	45-88-1765	Flat Washer	1
99	05-84-0935	Socket Hex Head Screw	1
102	31-94-0110	Trigger Valve Assembly	1

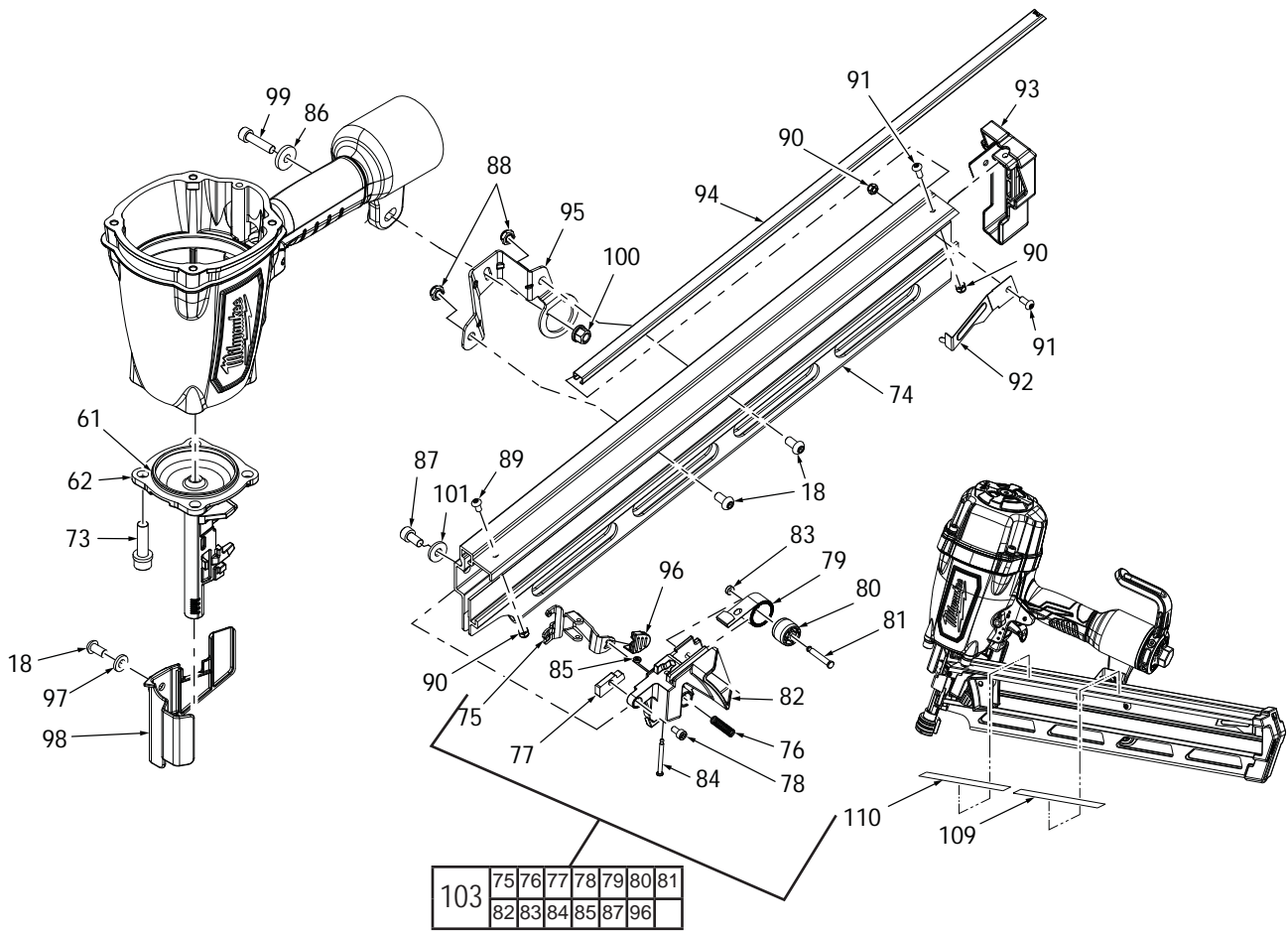


FIG.	PART NO.	DESCRIPTION OF PART	NO. REQ.
18	05-83-0520	Hex Bolt, M6 x 1.0-12	3
61	34-40-3145	O-Ring	1
62	30-61-0205	Nose Piece	1
73	05-84-0870	Bolt Assembly	4
74	43-40-0470	Magazine A	1
75	43-72-0355	Pusher	1
76	40-50-3135	Pusher Button Spring	1
77	42-28-0355	Square Stop Bracket	1
78	05-84-0885	Socket Hex Head Screw	1
79	40-50-3145	Spring	1
80	44-96-0200	Spring Roller	1
81	06-65-1400	Pin	1
82	42-92-1485	Protecting Hood Cover	1
83	44-86-0705	Retainer Ring	1
84	44-60-1850	Trigger Pivot Pin	1
85	44-86-0700	Urethane Retainer	1
86	45-88-1765	Flat Washer	1
87	05-84-0930	Socket Hex Head Screw	1

FIG.	PART NO.	DESCRIPTION OF PART	NO. REQ.
88	05-59-2030	Lock Nut	2
89	05-83-0500	Half Round Hex Bolt	1
90	05-59-2020	Lock Nut	3
91	05-83-0510	Half Round Hex Bolt M4 x 0.7-10	2
92	44-66-1310	Nail Stop Plate	1
93	42-92-1450	Magazine End Cover	1
94	44-81-0055	Magazine Channel	1
95	42-36-2035	Magazine Bracket	1
96	42-92-1515	Lever Cover	1
97	45-88-1750	Flat Washer	1
98	42-92-1505	Work Contact Element Cover	1
99	05-84-0935	Socket Hex Head Screw	1
100	05-59-2035	Nut	1
101	45-88-1785	Flat Washer	1
103	45-24-0010	Magazine Pusher Assembly	1
109	12-98-0300	Service Nameplate	1
110	10-20-3315	Warning Label	1
	14-70-0135	Overhaul Kit (Not Shown)	1
	14-70-0150	Driver Maintenance Kit (Not Shown)	1

### **Disassembly:**

- 7, 10, 11, 12, 13, 14, 15, 16, 17, 18 Remove valve assembly (10-17) from top cap (7) by removing hex bolt (18) in a counter clockwise direction. Note: Assembly is spring loaded. Hold assembly in place while removing hex bolt (18).
- 23, 24, 51, 19, 20 Remove driver assembly (23) and cylinder assembly (24) from tool body (51) by turning the tool body (51) upside down and tapping the outside rim of the tool casting against a piece of wood.
- Note: Remove press ring(s) (19 and 20) prior to removing cylinder assembly.
- 51, 74, 86, 87, 99, 100, 101 Remove magazine (74) from tool body (51) by removing bolts, washers (87 101, 99, 86), and nut (100) using a 5 mm hex key and 10 mm wrench.
- 74, 79, 89, 90, 103 Remove magazine pusher assembly (103) and spring (79) from magazine (74) by pushing assembly back far enough to clear lock nut (90); secure nut using a 7 mm socket, and remove hex bolt (89) from pusher spring (79) using a 2.5 mm hex key.
- 42 43 45, 46, 47, 48, 49 50 51,102, Remove trigger valve assembly (102) from tool body (51) by placing a 3/32 in. (2.5 mm) punch inside half-moon slot of retainer (47) and gently tapping shaft of selector (45). Remove spring (46), retainer (47) and retainer (50). Remove trigger and spring (48, 49) from tool body. Push pins (42 and 43) out of tool body (51) just far enough to remove valve assembly. Note: Use service fixture #61-60-0005 to move spring pins (42 and 43) or a 1/8" punch.
- 51-54 Remove end cap (54) from tool body (51) counterclockwise.

### **Re-Assembly :**

Note: Apply a thin coat of grease to all o-rings, exterior of cylinder seals, and trigger valve assembly before replacement or reinstallation.

- 24, 25 26, 27, 28, 29 Install o-ring (25) onto cylinder (24) and place remaining parts (26, 27, 28, and 29) onto cylinder (24). Note: Install cylinder ring (28) onto cylinder (24) with the ribbed edge up. Set aside.
- 21, 22, 23, 24, 51 Install o-ring (22) and piston ring (21) onto driver assembly (23) and place assembly inside cylinder (24). Install assembly into tool body (51) Note: Be sure driver shaft is inserted in the proper orientation.
- 19, 20 Cupped side of steel press ring (19) to face cupped side of nylon press ring (20) in assembly.
- 7, 10, 11, 12, 13, 14, 15, 16, 17, 18 Reinstall valve assembly components (10-17) into internal bore of top cap (7) and secure assembly with screw (18). Tighten screw clockwise. Note: Valve assembly is spring-loaded and must be held in place when reinstalling hex bolt (18).
- 7, 30, 51 Align four raised bosses on bumper band (30) with slots on top cap (7) prior to assembling cap onto tool body (51).
- 42 43 51,102 Reinstall trigger valve assembly (102) into tool body (51) by making sure the grooves in the valve assembly match up with the two holes for spring pins (42, and 43). Tap pins into tool body until they are flush with casting using service fixture 61-60-0005.
- 45, 47, 50 Reinstall retainer assembly (47 and 50) onto shaft of selector (45) by aligning half-moon cut-out on retainer with half-moon of selector shaft and snap it onto end of selector shaft (45).
- 1 Apply blue locking sealant (Blue Loctite® 242 or the equivalent) to threads of deflector-retaining screw (1) prior to reassembly.
- 74, 79, 89, 90, 103 Reinstall pusher assembly (103) into track of magazine (74). Make sure bend of spring (79) slides over top magazine connection point, and push assembly back just far enough to install bolt (89) through top of magazine track and hole in spring (79). Install nut (90) onto threads of bolt (89) and secure using a 2.5 mm hex key and 7 mm socket.
- 62, 74, 87, 101 Reinstall front of magazine assembly (74) to nosepiece (62) and install screw and washer (87,101) using a 5 mm hex key.
- 51, 74, 86, 99, 100 Reinstall back of magazine (74) to tool body (51), and install screw (99), washer (86) and nut (100) using a 5 mm hex key and 10 mm wrench.

**Lubrication:**

Type I Grease 49-08-7100

Clean all parts with a dry clean cloth.

7, 10, 11, 12, 13, 14, 15, 16, 17 Place a thin coating of grease into internal bore of top cap (7), coat parts (10-17) and reassemble in order shown.

21, 22, 23 Coat o-ring (22) and piston ring (21) prior to installing into groove of driver assembly (23).

24, 25, 27, 28 Coat cylinder o-rings (25, 27) and cylinder ring (28) prior to installing onto cylinder (24).

31, 32 33, 34, 35, 36, 37, 38, 39, 40, 41 Coat all parts of the trigger valve assembly if being replaced individually. Components cleaned in any type of solvent or water solution will require new lubrication.

Note: A new trigger valve assembly will be pre-lubricated and will not require any additional lubrication.