



SERVICE PARTS LIST

BULLETIN NO.
54-24-5440

SPECIFY CATALOG NO. AND SERIAL NO. WHEN ORDERING PARTS		REVISED BULLETIN	DATE
14 lb. (6,4 kg) SDS-MAX DEMOLITION HAMMER			Jan. 2009
CATALOG NO. 5446-21	STARTING SERIAL NO. B39A	WIRING INSTRUCTION 58-01-5400	

EXAMPLE:
Component Parts (Small #) Are Included
When Ordering The Assembly (Large #).

● = Component of #102
Maintenance Service Kit
No. 14-46-0290

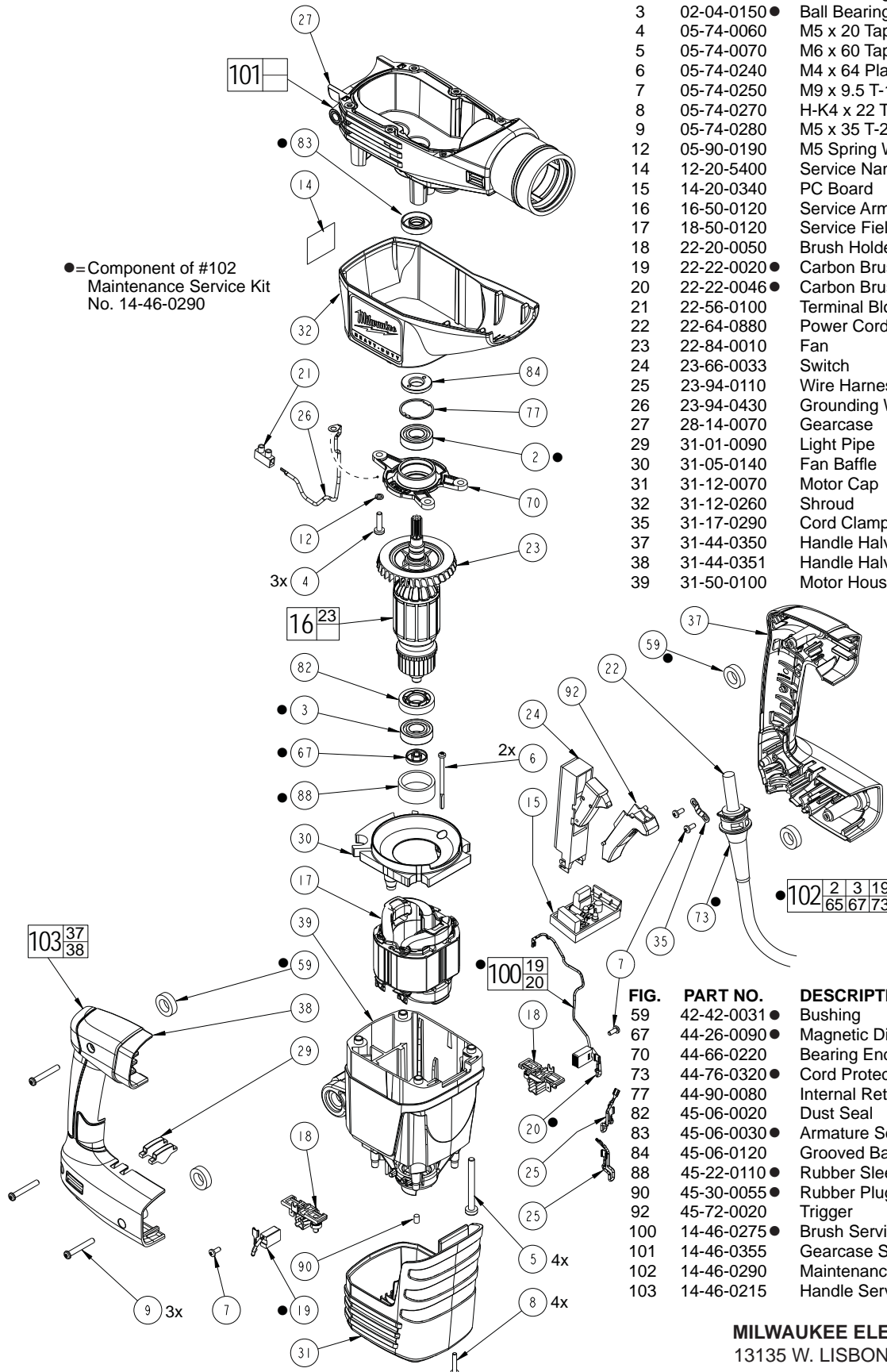


FIG.	PART NO.	DESCRIPTION OF PART	NO. REQ.
2	02-04-0140 ●	Ball Bearing	(1)
3	02-04-0150 ●	Ball Bearing	(1)
4	05-74-0060	M5 x 20 Taptite T-25 Screw	(3)
5	05-74-0070	M6 x 60 Taptite T-30 Screw	(4)
6	05-74-0240	M4 x 64 Plastite T-20 Screw	(2)
7	05-74-0250	M9 x 9.5 T-15 Screw	(4)
8	05-74-0270	H-K4 x 22 T-15 Screw	(4)
9	05-74-0280	M5 x 35 T-20 Screw	(3)
12	05-90-0190	M5 Spring Washer	(1)
14	12-20-5400	Service Nameplate Kit	(1)
15	14-20-0340	PC Board	(1)
16	16-50-0120	Service Armature Assembly	(1)
17	18-50-0120	Service Field Assembly	(1)
18	22-20-0050	Brush Holder Assembly	(2)
19	22-22-0020 ●	Carbon Brush Assembly	(1)
20	22-22-0046 ●	Carbon Brush Assembly (2 wire)	(1)
21	22-56-0100	Terminal Block	(1)
22	22-64-0880	Power Cord	(1)
23	22-84-0010	Fan	(1)
24	23-66-0033	Switch	(1)
25	23-94-0110	Wire Harness	(2)
26	23-94-0430	Grounding Wire Harness	(1)
27	28-14-0070	Gearcase	(1)
29	31-01-0090	Light Pipe	(2)
30	31-05-0140	Fan Baffle	(1)
31	31-12-0070	Motor Cap	(1)
32	31-12-0260	Shroud	(1)
35	31-17-0290	Cord Clamp	(1)
37	31-44-0350	Handle Halve-Left	(1)
38	31-44-0351	Handle Halve-Right	(1)
39	31-50-0100	Motor Housing	(1)

**SEE PAGE 3 FOR
LUBRICATION AND
SERVICE NOTES**

FIG.	PART NO.	DESCRIPTION OF PART	NO. REQ.
59	42-42-0031 ●	Bushing	(4)
67	44-26-0090 ●	Magnetic Disc	(1)
70	44-66-0220	Bearing End Plate	(1)
73	44-76-0320 ●	Cord Protector	(1)
77	44-90-0080	Internal Retaining Ring	(1)
82	45-06-0020	Dust Seal	(1)
83	45-06-0030 ●	Armature Seal	(1)
84	45-06-0120	Grooved Ball Bearing	(1)
88	45-22-0110 ●	Rubber Sleeve	(1)
90	45-30-0055 ●	Rubber Plug	(1)
92	45-72-0020	Trigger	(1)
100	14-46-0275 ●	Brush Service Kit	(1)
101	14-46-0355	Gearcase Service Kit	(1)
102	14-46-0290	Maintenance Service Kit	(1)
103	14-46-0215	Handle Service Kit	(1)

FASTENER TORQUE SPECIFICATIONS (FT./LBS.)		
FIG. NO.	SEATING TORQUE	
	MINIMUM	MAXIMUM
2	4.43	
4	3.30	
5	4.43	
6	0.96	
7	1.25	
8		
9	1.25	
10	3.30	
11	3.30	
81	1.25	

●14-46-0290 MAINTENANCE SERVICE KIT

THIS KIT CONTAINS:

1	02-04-0140	Ball Bearing
1	02-04-0150	Ball Bearing
1	31-12-0420	Rubber Cap
1	34-40-0020	O-Ring
3	34-40-0170	O-Ring
1	34-60-0040	Core Lifter Ring
1	34-60-0090	Internal Snap Ring
1	34-60-0110	Internal Snap Ring
1	42-38-0410	Dampening Bumper
4	42-42-0031	Bushing
1	43-44-0120	Gearcase Gasket
2	43-96-0010	Interlock
1	44-26-0090	Magnetic Disc
1	44-76-0320	Cord Protector
1	44-86-0020	Seal Retainer
1	44-86-0160	Retaining Ring Key
2	44-90-0510	Seal
1	45-06-0030	Armature Seal
1	45-22-0110	Rubber Sleeve
1	45-30-0055	Rubber Plug
1	45-56-0010	Striker
1	45-88-1120	Washer
1	45-88-1490	Washer
1	45-88-1570	Stop Washer
1	14-46-0275	Brush Svc. Kit (Incl. 19 & 20)

14-46-0275 BRUSH SERVICE KIT

THIS KIT CONTAINS:

1	22-22-0020	Carbon Brush Assembly
1	22-22-0046	Carbon Brush Assembly (Two Wire)