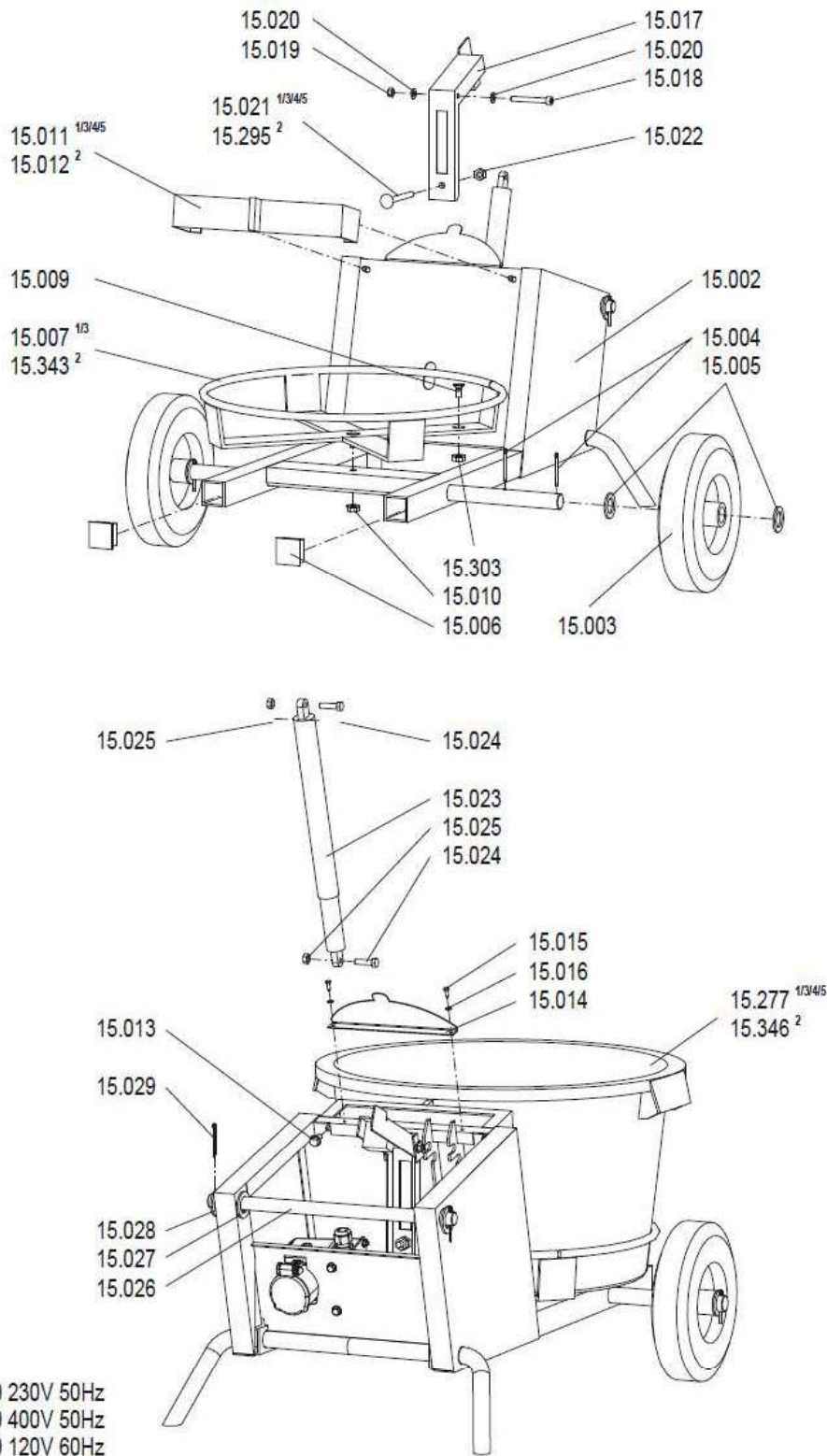


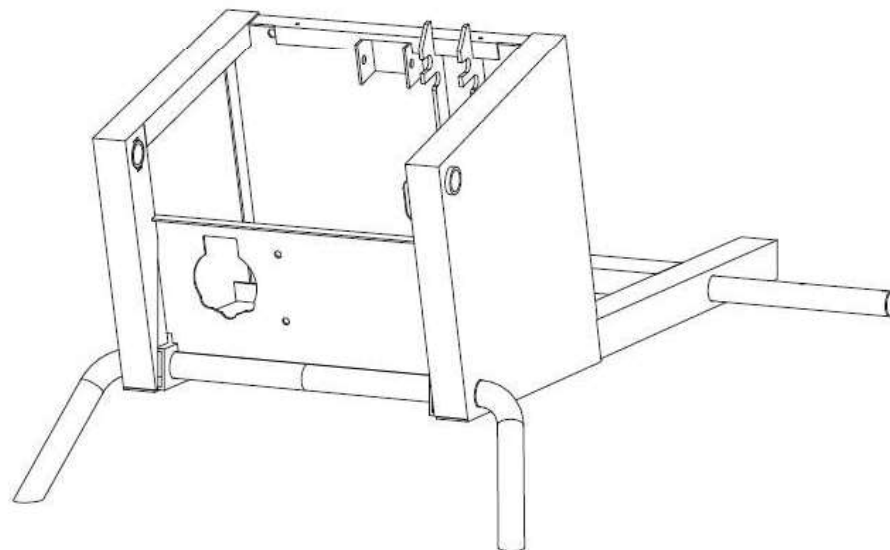
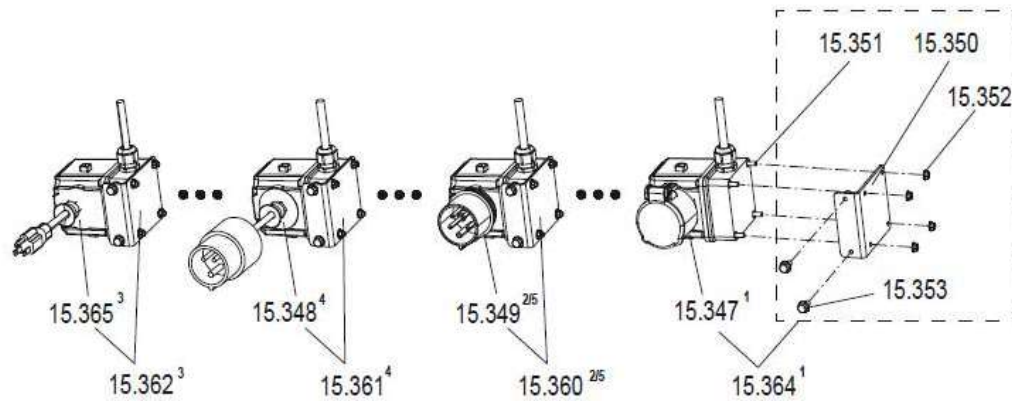
XM2-650, XM3-900



- ¹ = XM2-650 230V 50Hz
- ² = XM3-900 400V 50Hz
- ³ = XM2-650 120V 60Hz
- ⁴ = XM2-650 110V 50Hz
- ⁵ = XM2-650 400V 50Hz

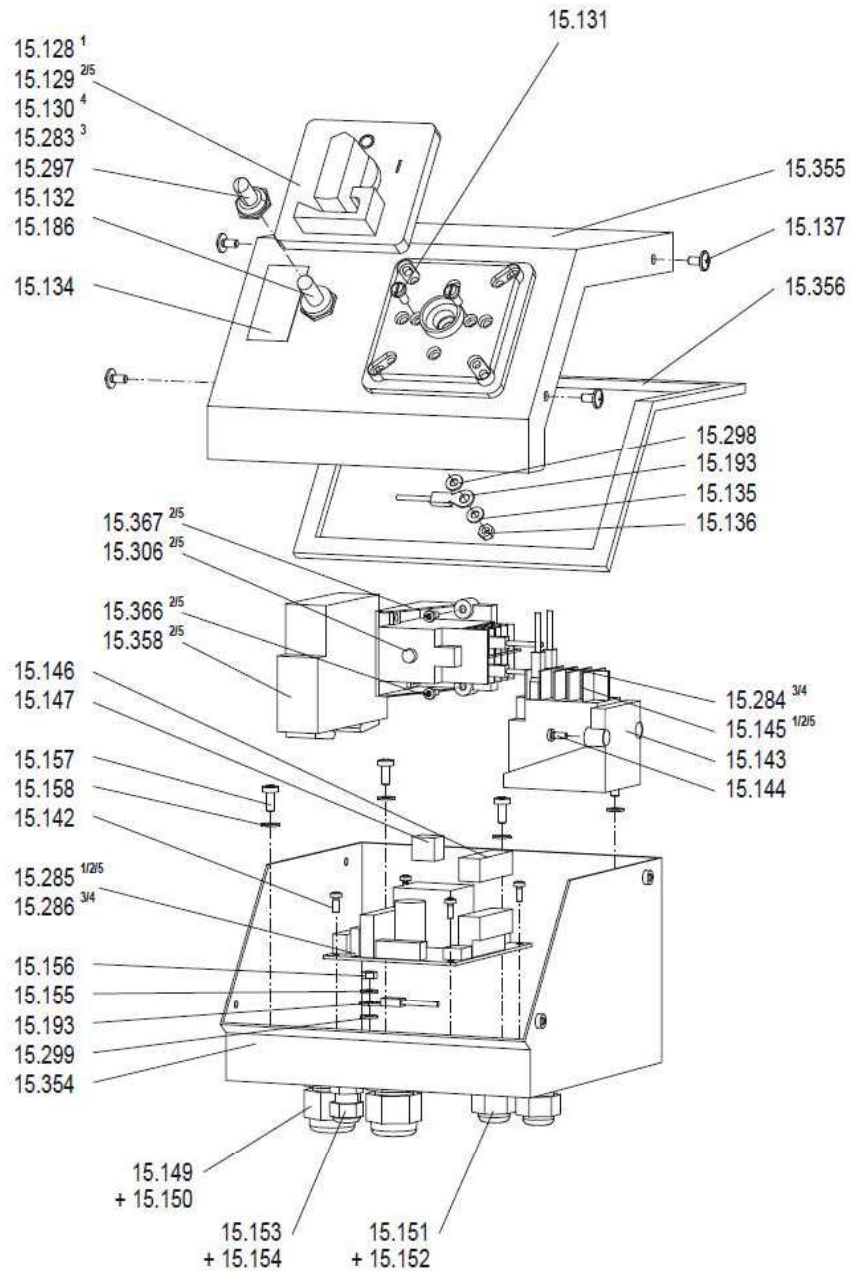
XM2-650, XM3-900

01.06.2022 Seite 2/11



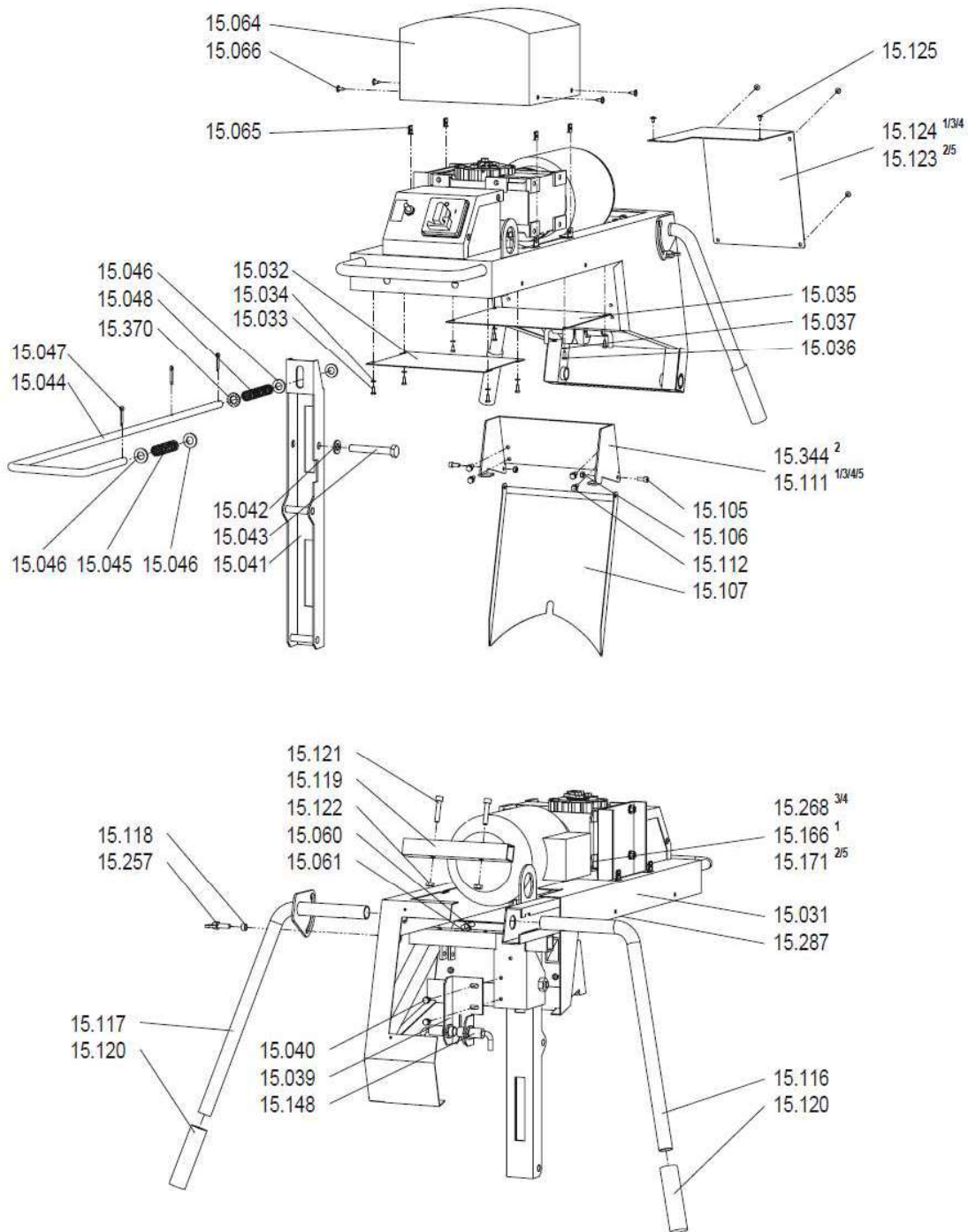
- ¹ = XM2-650 230V 50Hz
- ² = XM3-900 400V 50Hz
- ³ = XM2-650 120V 60Hz US
- ⁴ = XM2-650 110V 50Hz UK
- ⁵ = XM2-650 400V 50Hz

XM2-650, XM3-900



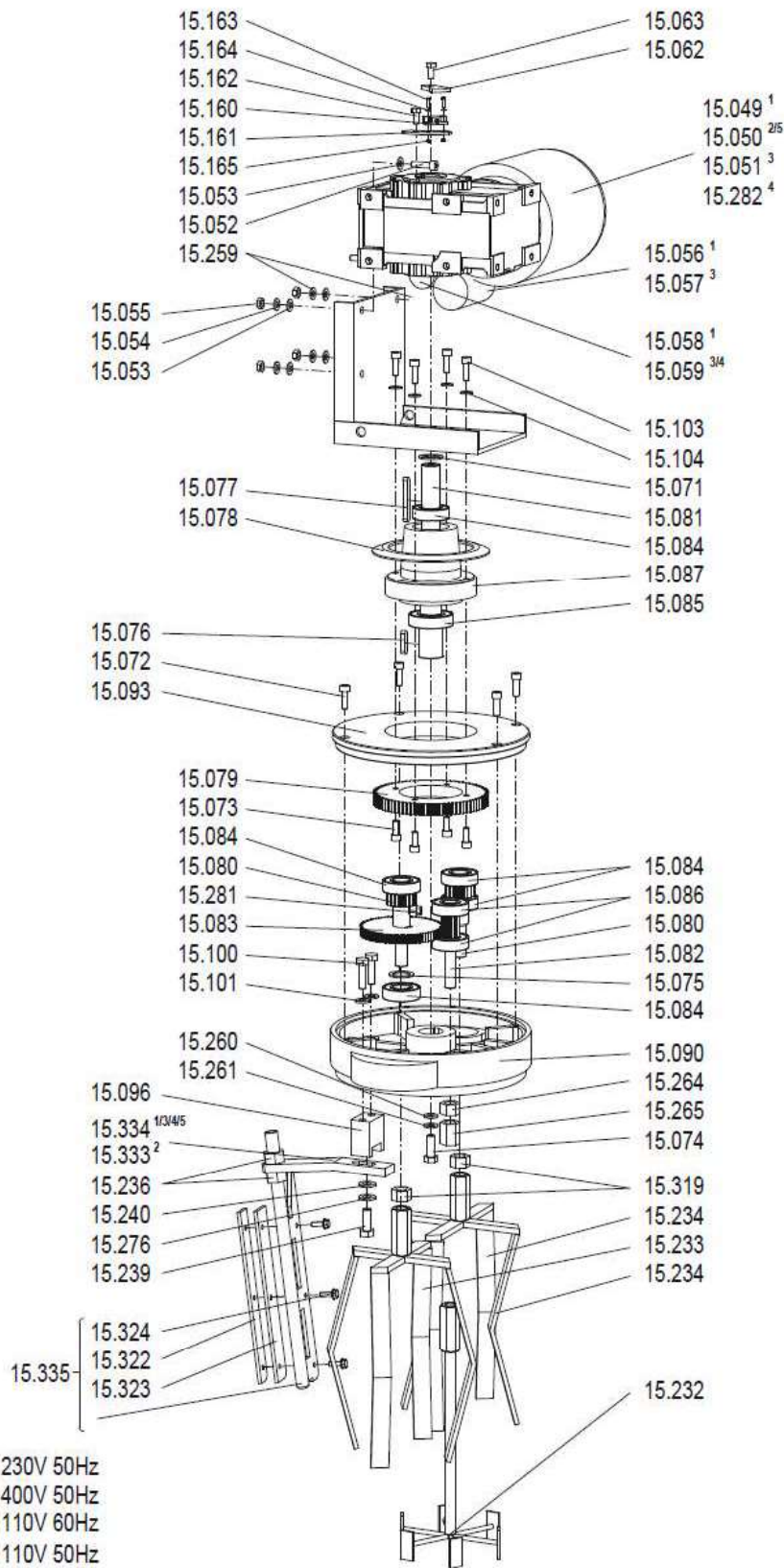
- ¹ = XM2-650 230V 50Hz
- ² = XM3-900 400V 50Hz
- ³ = XM2-650 120V 60Hz
- ⁴ = XM2-650 110V 50Hz
- ⁵ = XM2-650 400V 50Hz

XM2-650, XM3-900



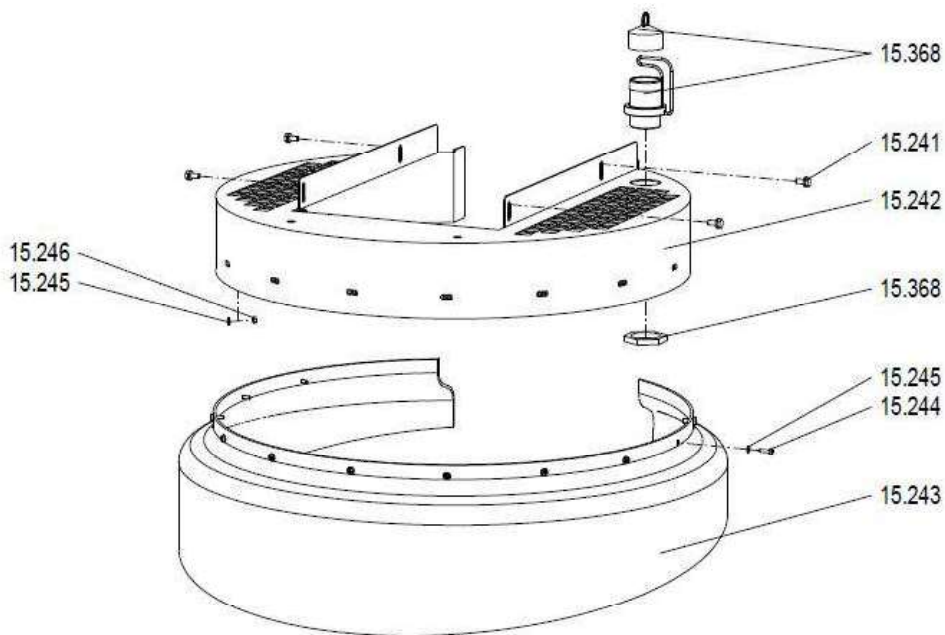
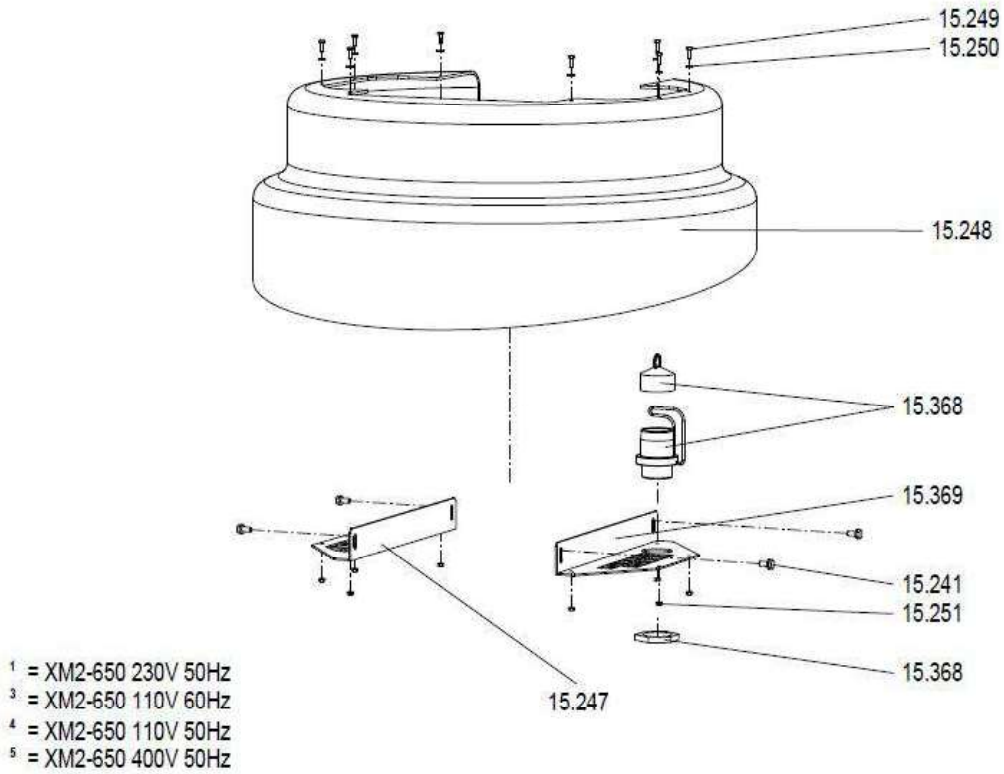
- ¹ = XM2-650 230V 50Hz
- ² = XM3-900 400V 50Hz
- ³ = XM2-650 110V 60Hz
- ⁴ = XM2-650 110V 50Hz
- ⁵ = XM2-650 400V 50Hz

XM2-650, XM3-900



- ¹ = XM2-650 230V 50Hz
- ² = XM3-900 400V 50Hz
- ³ = XM2-650 110V 60Hz
- ⁴ = XM2-650 110V 50Hz
- ⁵ = XM2-650 400V 50Hz

XM2-650, XM3-900



² = XM3-900 400V 50Hz

Please use Order No when searching for parts on www.taindustrial.com

Drawing Number	Order No	Description
15002	60307	Cart XM2-650/XM3-900
15003	60005	Wheel solid rubber
15004	50000	DIN 94 Splint 4x40
15005	51000	DIN 1440 washer d26
15006	45736	Filler plug 40x40x3
15007	70140	Bucket guidance
15009	51023	DIN 963 countersunk screw M10x20
15010	50090	Self-locking nut M10 F90
15011	60308	Bucket stop 65l
15012	60309	Bucket stop 90l
15013	50088	Self locking screw M8x16
15014	60310	Deflector
15015	51001	DIN 7976 self-tapping screw 4,2x13
15016	50023	DIN 125 washer B4,3
15017	60311	Rocker
15018	51027	DIN 912 socket head screw M8x65
15019	50871	DIN 985 hex nut M8
15020	50027	DIN 125 washer B8,4
15021	50600	DIN 603 screw M10x100
15022	50806	DIN 934 hex nut M10
15023	60312	Gas pressure spring with tube
15024	50881	DIN 933 hex screw M8x30
15025	50871	DIN 985 hex nut M8
15026	60313	Axle swivel arm
15027	60314	DIN 125 washer d21x3
15028	50401	DIN 433 washer 21
15029	50000	DIN 94 Splint 4x40
15031	60315	Swivel arm activ
15032	60316	Cover arm front
15033	51001	DIN 7976 self-tapping screw 4,2x13
15034	50032	DIN 125 washer B5,3 ST
15035	60317	Cover arm rear
15036	51001	DIN 7976 self-tapping screw 4,2x13
15037	50032	DIN 125 washer B5,3 ST
15039	60319	Carrier for proximity switch
15040	50067	Self locking screw M6x12
15041	60320	Notch lever
15042	50033	DIN 127 split washer B12
15043	51037	DIN 933 hex screw M12x85
15044	60405	Locking bolt
15045	60042	Compression spring
15046	50007	DIN 125 washer A13
15047	51038	DIN 94 Splint 4x25
15048	60043	Compression spring
15049	60352	Gear motor 230V 1,1kW 50Hz
15050	60400	Gear motor 400V 1,5kW 50Hz
15051	60341	Gear motor 230V 1,1kW 60Hz
15052	50968	DIN 912 socket head screw M8x30
15053	50027	DIN 125 washer B8,4
15054	50006	DIN 127 split washer B8
15055	50804	DIN 934 hex nut M8

Drawing Number	Order No	Description
15056	60324	Start up capacitor 40µF 130/480V
15057	60325	Start up capacitor 100µF 130/480 V
15058	60326	Capacitor 30µF 450V
15059	60327	Capacitor 90µF 450V
15060	60086	Socket PM 2H25-M
15061	61116	Cable tie L 295mm
15062	60329	Rotation encoder
15063	50908	DIN 933 hex screw M8x10
15063	51039	DIN 6912 socked head screw M8x10
15064	60328	Gear cover
15065	50069	Sheet-metal nut 4,8 mm 15 mm long
15066	50068	DIN 968 self-tapping screw 4,8x13
15071	50815	DIN 988 shim ring D35d25S2
15072	50816	DIN 915 threaded pin M8x55
15073	50817	DIN 912 socket head screw M8x20
15074	50802	DIN 933 hex screw M10x35
15075	50822	DIN 988 shim ring D35d25s1,5
15076	51006	DIN 6885 feather key A 8x7x32
15077	51046	DIN 6885 feather key A 8x7x63
15078	60055	Sealing washer
15079	60056	Sun gear
15080	60057	Planet wheel with thread
15081	60330	Drive shaft
15082	60108	Spur gear
15083	60109	Gear 17 CRNIMO 6
15084	69000	Deep groove ball bearing 6205 ZZ
15085	69001	Deep groove ball bearing 6206 ZZ
15086	69002	Deep groove ball bearing 6304 ZZ
15087	70040	Bearing flange
15090	70041	Bearing housing
15093	70042	Bearing hood
15096	70043	Support for scraper
15100	50864	DIN 933 hex screw M10x40
15101	50001	DIN 127 split washer B10
15103	50817	DIN 912 socket head screw M8x20
15104	50006	DIN 127 split washer B8
15105	50963	DIN 912 socket head screw M6x12
15106	51043	DIN 985 self-locking nut M6
15107	60331	Apron XM2-650/XM3-900
15110	60332	Bucket fixation 90l
15111	60333	Bucket fixation 65l
15112	50067	Self locking screw M6x12
15116	60334	Handle right
15117	60335	Handle left
15118	60368	Press-in nut M8 S-M8-1
15119	60336	Connector bar for handle XM2-
15120	60337	Handle Helios
15121	50883	DIN 912 socket head screw M8x40
15122	50871	DIN 985 hex nut M8
15123	60338	Cover
15124	60339	Cover

Drawing Number	Order No	Description
15125	51048	Recessed head screw M4x8
15128	60156	Main switch = emergency stop 230V
15129	60274	Main switch = emergency stop 400V
15130	60257	Main switch = emergency stop 110V
15131	50015	DIN 84 cheese head screw M4x8
15132	60163	Switch
15134	00298	Sticker for timer switch
15135	50017	DIN 127 split washer B4
15136	50825	DIN 934 hex nut M4
15137	51048	Recessed head screw M4x8
15142	50024	DIN 84 cheese head screw M3x8
15142	50072	DIN 84 cheese head screw M3x10
15143	60344	Contactator support
15144	50072	DIN 84 cheese head screw M3x10
15145	60080	Contactator E 3250-45 4 shutter
15146	64056	Plug FK MC 0,5
15147	64054	Plug FK MC 0,5
15148	62014	Proximity switch 18 mm
15148	71547	Proximity switch for swivel arm
15149	60440	Screw connection M20 x1,5
15149	61295	Screw connection M20 x1,5
15150	51031	DIN 74361 nut M20x1,5
15150	60429	Lock nut M20x1,5
15151	64084	Screw connection M16 x1,5
15152	64085	Lock nut
15153	60345	Screw connection M12x1,5
15154	60346	Lock nut
15155	50017	DIN 127 split washer B4
15156	50825	DIN 934 hex nut M4
15157	51002	DIN 7985 oval head screw M4x10
15157	51095	DIN 7985 oval head screw M4x8
15158	50017	DIN 127 split washer B4
15160	60347	Reed Sensor
15161	60348	Bracket for reed sensor
15162	51039	DIN 6912 socked head screw M8x10
15163	50205	DIN 7985 oval head screw M3x16
15164	50206	DIN 127 split washer B3
15165	50207	DIN 934 hex nut M3 VA2
15166	71548	Cable motor
15171	71549	Cable motor
15176	71546	Connection control board
15186	71550	Cabel time selection switch
15193	71553	Protective grounding
15232	70157	Dissolver SR 160 gal. M16
15233	70153	Mixing tool XM 160 M18
15234	70155	Mixing tool XM 195 M18
15236	50819	DIN 934 hex nut M18
15239	50855	DIN 933 hex screw M12x35
15240	50007	DIN 125 washer A13
15241	50067	Self locking screw M6x12
15242	60362	Protective cage

Drawing Number	Order No	Description
15243	60240	Protective hood
15244	50045	DIN 7985 oval head screw M4x14
15244	50942	DIN 933 hex screw M4x14
15245	51003	DIN 9021 washer D4,3
15246	50835	DIN 985 hex nut M4
15247	60363	Carrier for protective cover
15248	60364	Protective hood
15249	50942	DIN 933 hex screw M4x14
15249	50946	DIN 933 hex screw M4x12
15250	51003	DIN 9021 washer D4,3
15251	50835	DIN 985 hex nut M4
15257	50209	DIN 316 thumbscrew M8x40
15259	51030	DIN 6797 tooth wheel J 8,4
15260	50002	DIN 125 washer B10,5
15261	50001	DIN 127 split washer B10
15264	50823	DIN 934 hex nut M16
15265	70063	Thread plug M16
15268	71563	Cable motor
15269	71565	Connection control board
15270	71554	Connection control board
15271	71555	Cable mains switch L2
15272	71556	Cable mains switch L2
15275	71564	Mains cable 110V
15276	50033	DIN 127 split washer B12
15277	60403	Mortar bucket 65l black
15278	60252	Mortar bucket 90l black
15281	51009	DIN 6885 feather key A 6x6x12
15282	60427	Gear motor 110V 1,1kW 50Hz
15283	60298	Main switch = emergency stop 110V 60Hz
15284	60417	Contactactor 110V 50/60Hz 4S
15285	70179	Motherboard XM2-650 / XM3-900 230/400V
15286	70180	Motherboard XM2-650 110V
15287	61116	Cable tie L 295mm
15295	50603	DIN 603 screw M10x120
15297	60164	Protection cap
15306	60443	Contactactor 2Ö+2S
15319	50977	DIN 936 hex nut M18
15322	60182	Terminal block
15323	60176	Rubber lip
15324	50099	Self locking screw M6x20
15325	50091	Self-locking nut M6 F90
15333	60303	Attachment for scraper
15334	60349	Attachment for scraper
15335	70058	Rim scraper with rubber
15336	50857	DIN 912 socket head screw M8x16
15337	50092	Self-locking nut M8 F90
15339	60450	Main switch = emergency stop 200V
15340	60115	Contactactor 200V 60Hz
15341	50812	DIN 912 socket head screw M8x35
15343	70141	Bucket guidance
15344	60342	Bucket fixation 90 l white

Drawing Number	Order No	Description
15346	60261	Mortar bucket 90l white
15347	60295	Plug collar 230V
15348	60293	Plug collar 110V UK
15349	60262	Plug collar 400V compl.
15350	60193	Mounting bracket
15351	51175	DIN 912 socket head screw M5x50
15352	51105	Self-locking nut M5 F90
15353	50067	Self locking screw M6x12
15354	60408	Carrier for mainboard
15355	60407	Cover control unit
15356	62241	Sealing
15358	60409	Phase reverser
15360	70223	Plug collar XM 400V ET
15361	70224	Plug collar XM 110V UK ET
15362	70225	Plug collar XM 120V US
15364	70222	Plug collar XM 230V ET
15365	60467	Plug collar 120V US
15366	51149	DIN 7380 socket head screw
15367	60344	Contacteur support
15368	71045	Vacuum cleaner connection
15369	60507	Carrier for protective cover
15370	60188	Contact washer M12