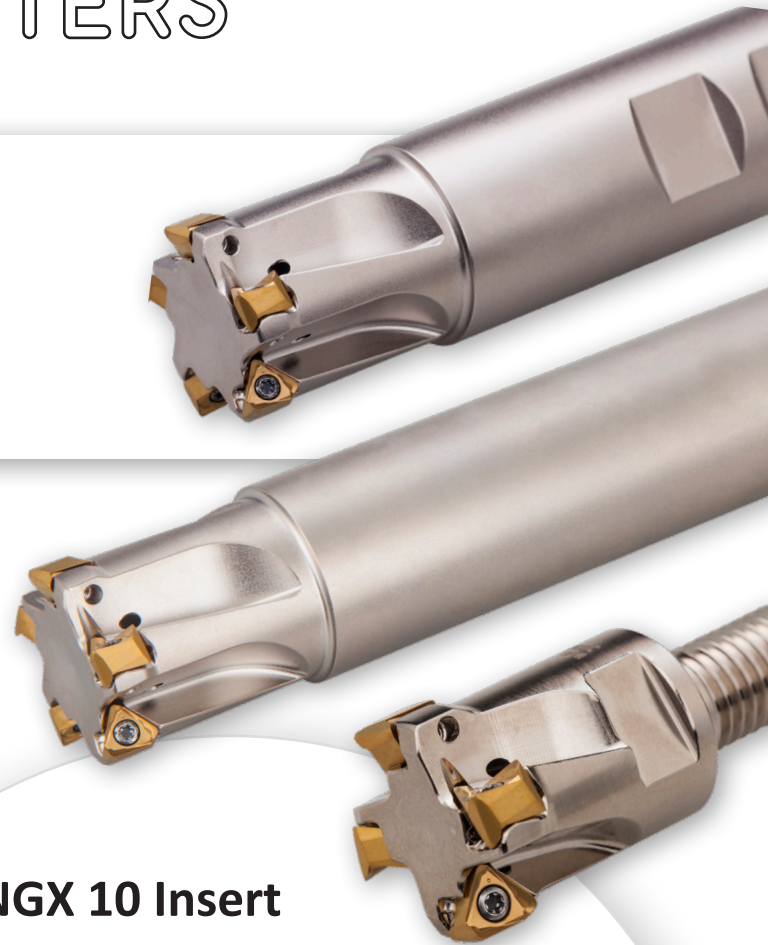


- Double sided 6-edge inserts
- Cutting diameters start at 0.750"
- Very precise insert and 90° pocket

## ECON TN10 CUTTER

### Applications of the ECON TN10

- Shallow square shoulders
- Keyway grooves
- Slots
- Face milling
- Plunge milling
- **RAMPING**



### TNGX 10 Insert

Reduced Cutting Force

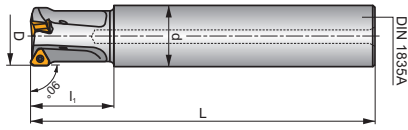
Inclined  
cutting  
edge

Positive  
geometry

Sub micron  
substrate

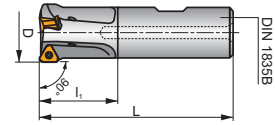
.008/.016/.031  
radius available





### Cylindrical

ISO Code	EDP#	D	L	l1	d	# of Inserts
075A2R114C075-ISTN10-C	7276931	0.750	5.906	1.142	0.750	2
075A3R114C075-ISTN10-C	7276932	0.750	5.906	1.142	0.750	3
100A3R140C100-ISTN10-C	7276933	1.000	6.693	1.339	1.000	3
100A4R140C100-ISTN10-C	7276934	1.000	6.693	1.339	1.000	4
125A4R146C125-ISTN10-C	7276935	1.250	7.677	1.457	1.250	4
125A5R146C125-ISTN10-C	7276936	1.250	7.677	1.457	1.250	5

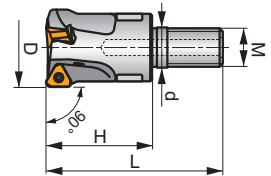


### Weldon

ISO Code	EDP#	D	L	l1	d	# of Inserts
075A2R125W075-ISTN10-C	7276925	0.750	3.500	1.250	0.750	2
075A3R125W075-ISTN10-C	7276926	0.750	3.500	1.250	0.750	3
100A3R150W100-ISTN10-C	7276927	1.000	4.000	1.500	1.000	3
100A4R150W100-ISTN10-C	7276928	1.000	4.000	1.500	1.000	4
125A4R150W125-ISTN10-C	7276929	1.250	4.331	1.500	1.250	4
125A5R150W125-ISTN10-C	7276930	1.250	4.331	1.500	1.250	5

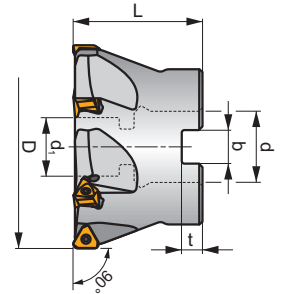
### Modular

ISO Code	EDP#	D	L	H	M	d	# of Inserts
075A2R102M10-ISTN10-C	7276937	0.750	1.772	1.024	M10	0.413	2
075A3R102M10-ISTN10-C	7276938	0.750	1.772	1.024	M10	0.413	3
100A3R130M12-ISTN10-C	7276939	1.000	2.165	1.300	M12	0.492	3
100A4R130M12-ISTN10-C	7276940	1.000	2.165	1.300	M12	0.492	4
125A4R169M16-ISTN10-C	7276941	1.250	2.598	1.693	M16	0.669	4
125A5R169M16-ISTN10-C	7276942	1.250	2.598	1.693	M16	0.669	5



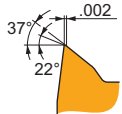
### Shell

ISO Code	EDP#	D	d	d1	L	b	t	# of Inserts
150A04R-IS90TN10-C	7276848	1.500	0.500	0.433	1.575	0.258	0.165	4
150A06R-IS90TN10-C	7276849	1.500	0.500	0.433	1.575	0.258	0.165	6
200A05R-IS90TN10-C	7276920	2.000	0.750	0.630	1.575	0.321	0.193	5
200A07R-IS90TN10-C	7276921	2.000	0.750	0.630	1.575	0.321	0.193	7
250A06R-IS90TN10-C	7276922	2.500	0.750	0.630	1.575	0.321	0.193	6
250A09R-IS90TN10-C	7276923	2.500	0.750	0.630	1.575	0.321	0.193	9
300A10R-IS90TN10-C	7276924	3.000	1.000	0.827	1.969	0.224	0.394	10



### TNGX

ANSI	P	M	K	N	S	r <sub>c</sub>	
TNGX 100402SR-F	M8340	■	■	▲	■	▲	.008
	8230	■	■	▲	■	▲	.008
	M9340	▲	■	■	■	▲	.016
TNGX 100404SR-F	M6330	▲	■	■	■	▲	.016
	M8340	■	■	▲	■	▲	.016
	8215	■	▲	■	■	▲	.016
	8230	■	■	▲	■	▲	.016
	M9340	▲	■	■	■	▲	.031
TNGX 100408SR-F	M6330	▲	■	■	■	▲	.031
	M8340	■	■	▲	■	▲	.031
	8215	■	▲	■	■	▲	.031
TNGX 100404FR-FA	M0315	■	■	■	■	■	.016
	HF7	■	■	■	■	■	.016
TNGX 100408FR-FA	M0315	■	■	■	■	■	.031
	HF7	■	■	■	■	■	.031



ANSI	P	M	K	N	S	r <sub>c</sub>	
TNGX 100404SR-M	M9340	▲	■	■	■	▲	.016
	M8340	■	■	▲	■	▲	.016
	M8345	■	■	▲	■	▲	.016
	8215	■	▲	■	■	▲	.016
	8230	■	■	▲	■	▲	.016
TNGX 100408SR-M	M9340	▲	■	■	■	▲	.031
	M6330	▲	■	■	■	▲	.031
	M8310	■	■	▲	■	▲	.031
	M8340	■	■	▲	■	▲	.031
	M8345	■	■	▲	■	▲	.031
	8215	■	▲	■	■	▲	.031
	8230	■	■	▲	■	▲	.031

